

ASUS Win Flash

User's Guide

Contents

Chapter 1	ASUS Win Flash	1
1.1	Introduction	1
1.2	How to upgrade BIOS	1

Chapter 1 ASUS Win Flash

1.1 Introduction

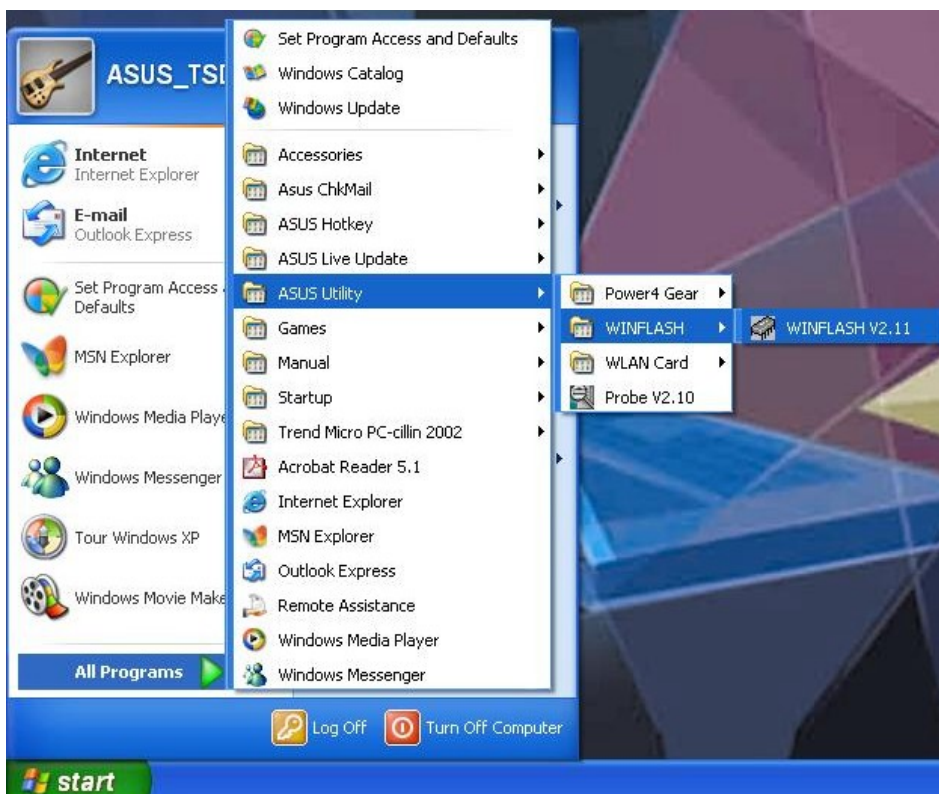
ASUS Win Flash is a tool to update BIOS in Windows.

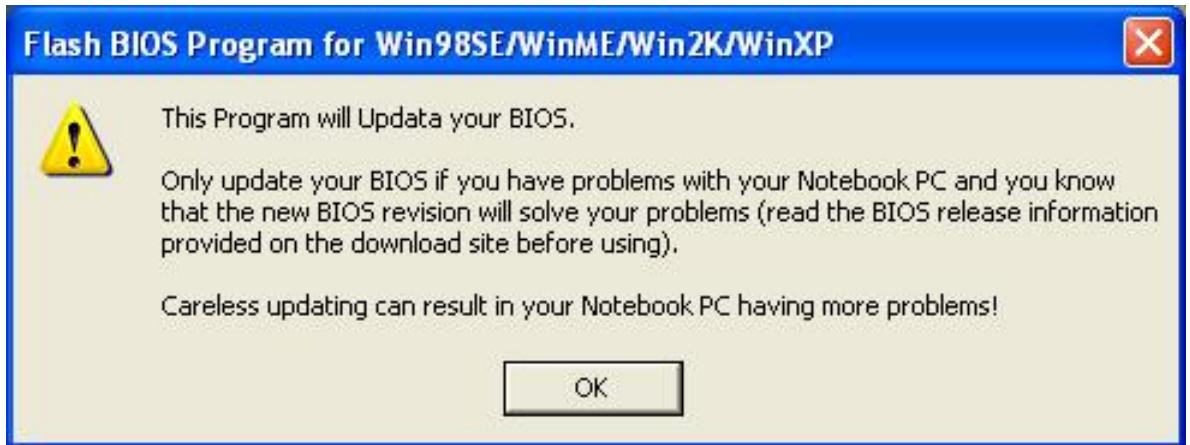
Please verify the exact model and download the latest BIOS file for your Notebook from ASUS Download Site.

Please ensure that you have installed ASUS Win Flash Utility before using update procedure. You may install the program via Driver & Utility CD if you cannot find the program from **Start -> All Programs->ASUS Utility**.

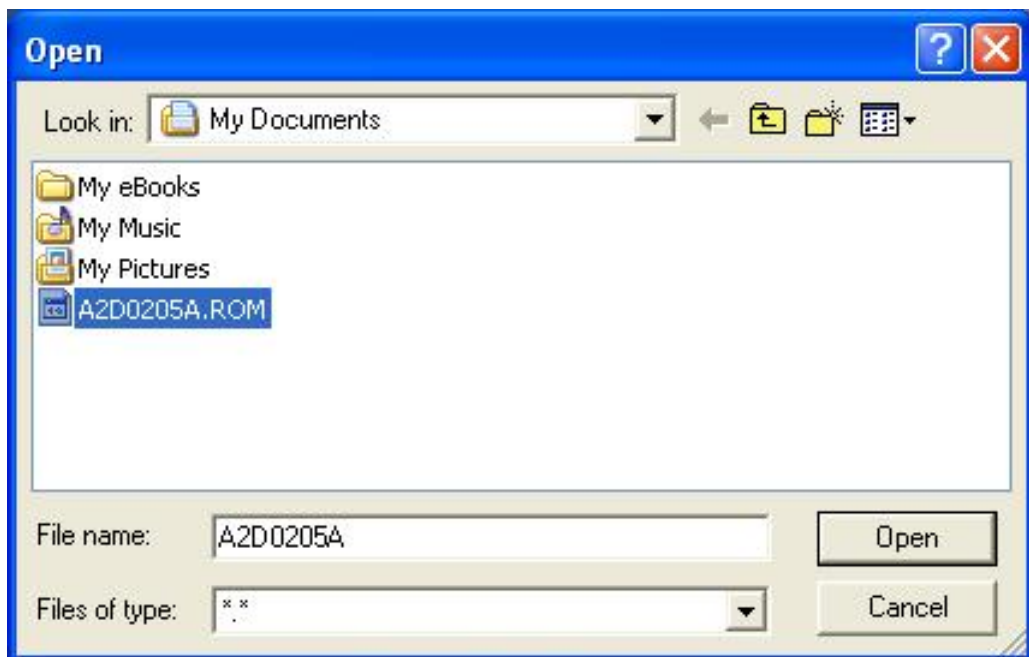
1.2 How to upgrade BIOS

1. Click **Start \ All Programs \ ASUS Utility \ WINFLASH \ WINFLASH**

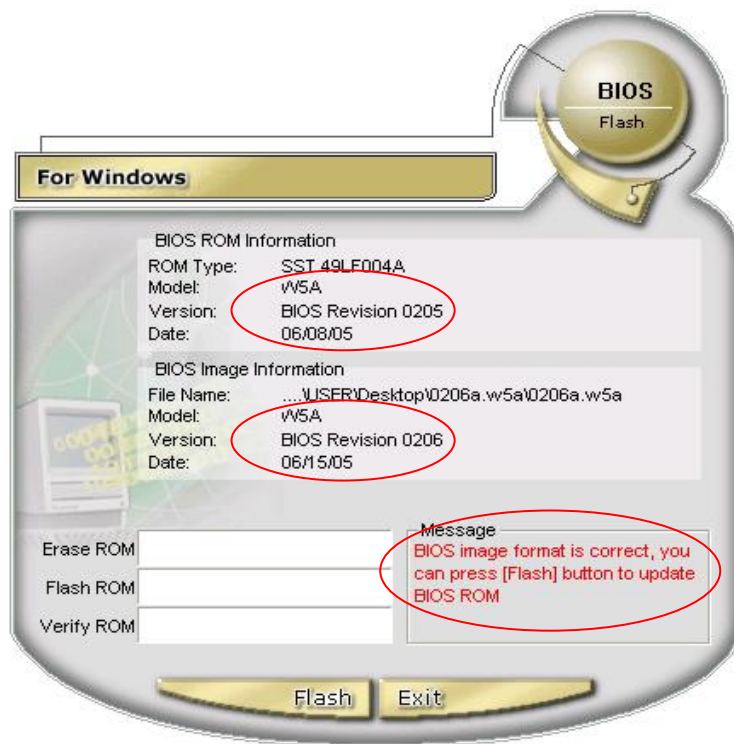




2. Select and open the updated BIOS image file



3. Please confirm the loaded BIOS information as displayed in the following image



Check out

1. Model

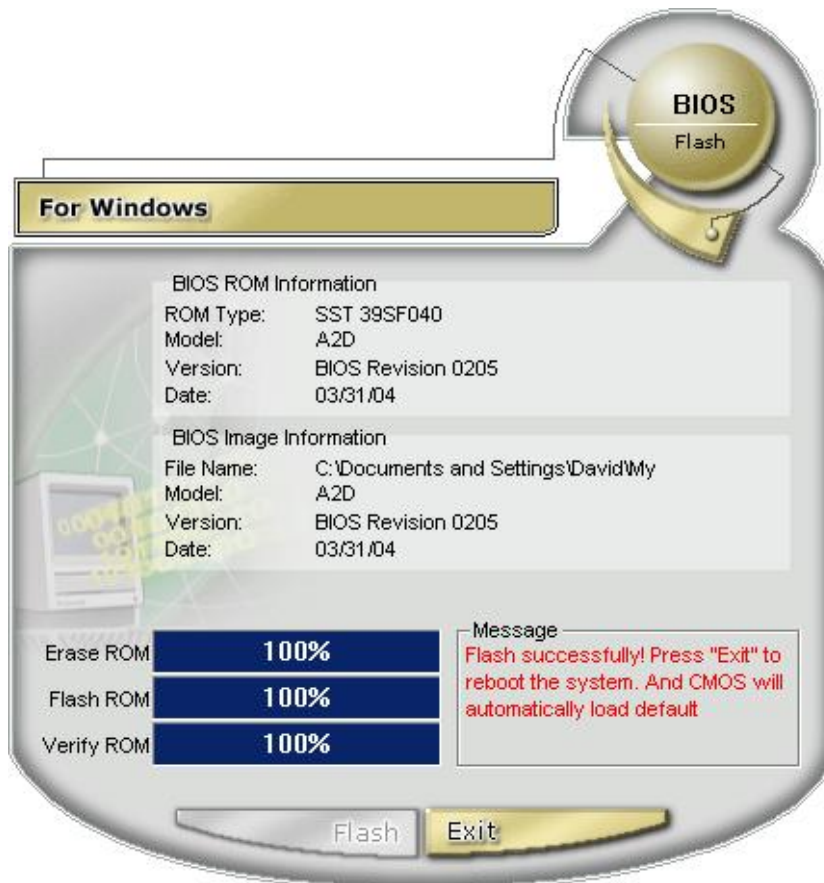
2. Version

Follow this message and flash your BIOS easily

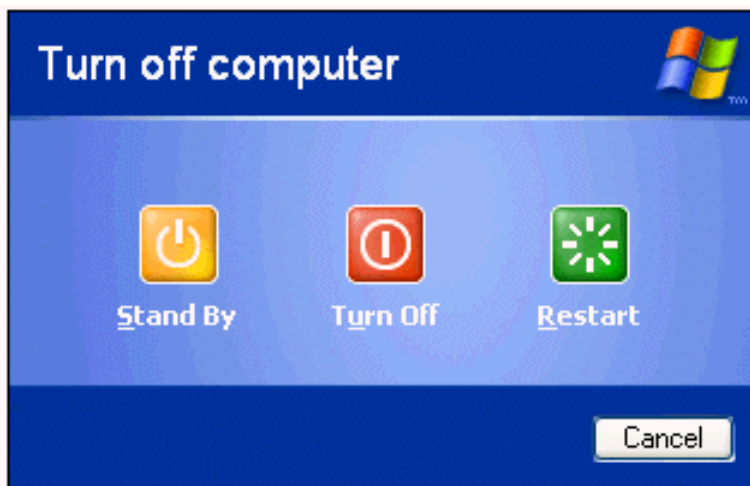
4. Press **Flash** to initialize BIOS updating procedure



5. Press "Exit" when procedure completes



- Please reboot the system



Assuming that you have successfully flashed the BIOS file, press **F2** to enter BIOS setup page when ASUS white logo appears during system Boot-up procedure

- After entering BIOS setup page, please go to **Exit** sub-menu and choose "**Load Optimal Defaults**". Then click "**Save and Exit**" and reboot system again. The BIOS flash procedure is now completed

BIOS SETUP UTILITY						
Main	Advanced	Display	Security	Power	Boot	Exit
Exit Options <hr/> Save Changes and Exit Discard Changes and Exit Discard Changes Load Optimal Defaults Load Failsafe Defaults		Exit system setup after saving the changes. F10 key can be used for this operation. ↔ Select Screen ↑↓ Select Item Enter Go to Sub Screen F1 General Help F9 Load Defaults F10 Save and Exit ESC Exit				
v02.33 (C) Copyright 1985-2002, American Megatrends, Inc.						