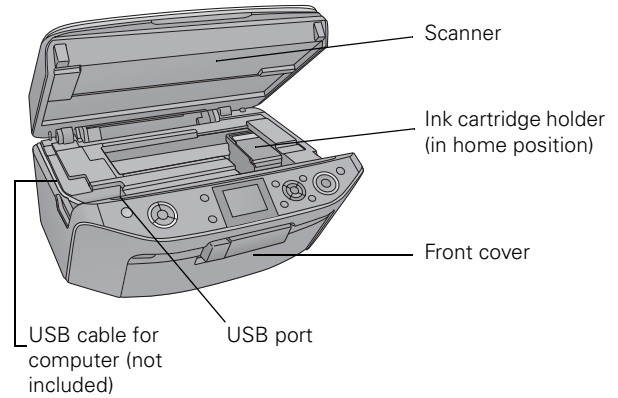
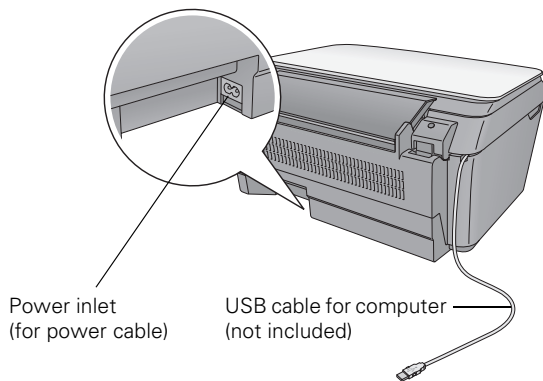
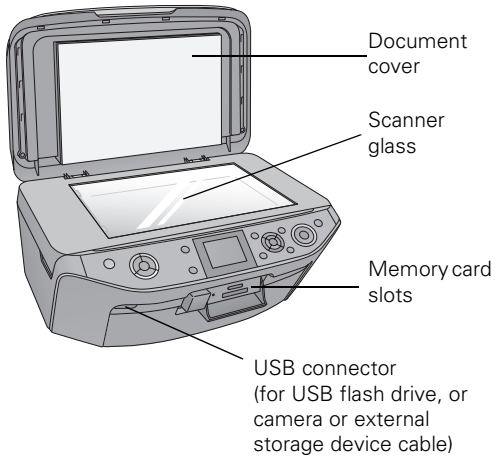
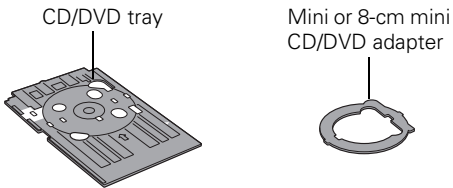
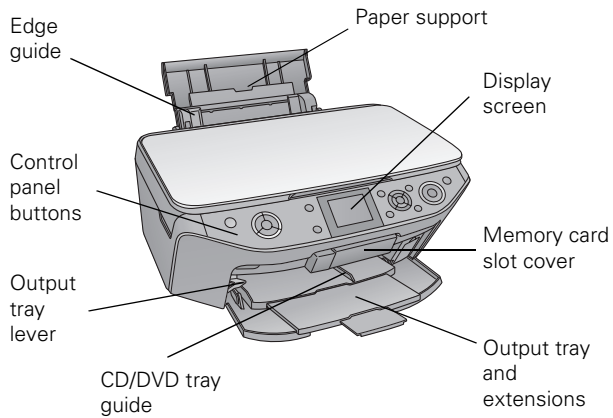


Product Parts



Accessories

Ink Cartridges

Use the following list when you order or purchase new ink cartridges:

Ink color	Part number
Black	78 or 77 (High Capacity)
Cyan	78 or 77 (High Capacity)
Light Cyan	78 or 77 (High Capacity)
Magenta	78 or 77 (High Capacity)
Light Magenta	78 or 77 (High Capacity)
Yellow	78 or 77 (High Capacity)

Note:

We recommend that you use genuine Epson® cartridges and do not refill them. The use of other products may affect your print quality and could result in printer damage.

Yields vary considerably based on images printed, print settings, paper type, frequency of use, and temperature. For print quality, a small amount of ink remains in the cartridge after the "replace cartridge" indicator comes on.

For best printing results, use up a cartridge within six months of opening the package.

Epson Media

Paper name	Size	Part number	Sheet count
Epson Ultra Premium Photo Paper Glossy	Borderless 4 × 6 inches	S041934 S042181 S042174	50 60 100
	Borderless 5 × 7 inches	S041945	20
	Borderless 8 × 10 inches	S041946	20
	Letter (8.5 × 11 inches)	S041935 S042175 S042182	20 25 50
Epson Ultra Premium Photo Paper Luster	Letter (8.5 × 11 inches)	S041405	50
Epson Premium Photo Paper Glossy	Borderless 4 × 6 inches	S041808 S041727	40 100
	Borderless 5 × 7 inches	S041464	20
	Borderless 8 × 10 inches	S041465	20
	Letter (8.5 × 11 inches)	S041286 S042183 S041667	20 25 50
Epson Premium Photo Paper Semi-gloss	Borderless 4 × 6 inches	S041982	40
	Letter (8.5 × 11 inches)	S041331	20
Epson Photo Paper Glossy	Borderless 4 × 6 inches	S041809 S042038	50 100
	Letter (8.5 × 11 inches)	S041141 S041649 S041271	20 50 100
Epson Bright White Paper	Letter (8.5 × 11 inches)	S041586	500
Epson Premium Presentation Paper Matte	Borderless 8 × 10 inches	S041467	50
	Letter (8.5 × 11 inches)	S041257 S042180	50 100
Epson Premium Presentation Paper Matte Double-sided	Letter (8.5 × 11 inches)	S041568	50
Epson Presentation Paper Matte	Letter (8.5 × 11 inches)	S041062	100
	Legal (8.5 × 14 inches)	S041067	100
Epson Photo Quality Self-adhesive Sheets	A4 (8.3 × 11.7 inches)	S041106	10
Epson Iron-on Cool Peel Transfer Paper	Letter (8.5 × 11 inches)	S041153	10

Product Specifications

Printing

Paper path	Sheet feeder, top entry
Sheet feeder capacity	Approx. 120 sheets at 20 lb (75 g/m ²)

Scanning

Scanner type	Flatbed color
Photoelectric device	CIS
Effective pixels	10,200 × 14,040 pixels at 1200 dpi
Document size	8.5 × 11.7 inches (216 × 297 mm), US Letter or A4 size
Scanning resolution	1200 dpi (main scan) 2400 dpi (sub scan)
Output resolution	50 to 4800, 7200, and 9600 dpi (50 to 4800 dpi in 1 dpi increments)
Image data	16 bits per pixel per color internal 8 bits per pixel per color external (maximum)
Light source	RGB three color LED

Paper

Note:

Use paper under normal conditions:
Temperature: 59 to 77 °F (15 to 25 °C)
Humidity: 40 to 60% RH

Single-sheets

Size	A4 (8.3 × 11.7 inches) A6 (4.1 × 5.8 inches) Letter (8.5 × 11 inches) Legal (8.5 × 14 inches) 4 × 6 inches 5 × 7 inches 8 × 10 inches Half Letter (5.5 × 8.5 inches) 16:9 wide (4 × 7.11 inches)
------	--

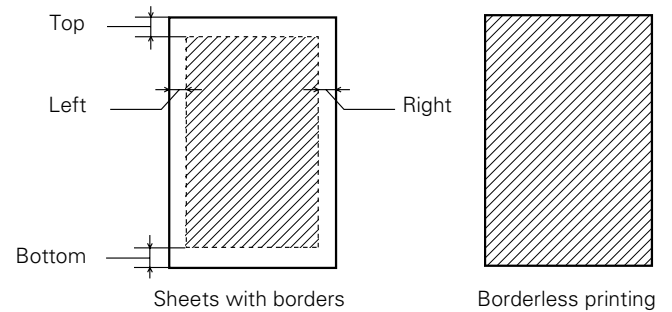
Paper types	Plain paper Special papers distributed by Epson
Thickness	0.003 to 0.004 inch (0.08 to 0.11 mm)
Weight	17 lb (64 g/m ²) to 24 lb (90 g/m ²)

Envelopes

Size	No. 10 (4.1 × 9.5 inches)
Paper type	Plain bond paper
Weight	20 lb (75 g/m ²) to 24 lb (90 g/m ²)

Printable area

Single sheets

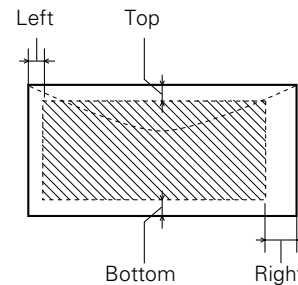


Top, Left, Right, and Bottom: 0.12 inch (3 mm) minimum

Note:

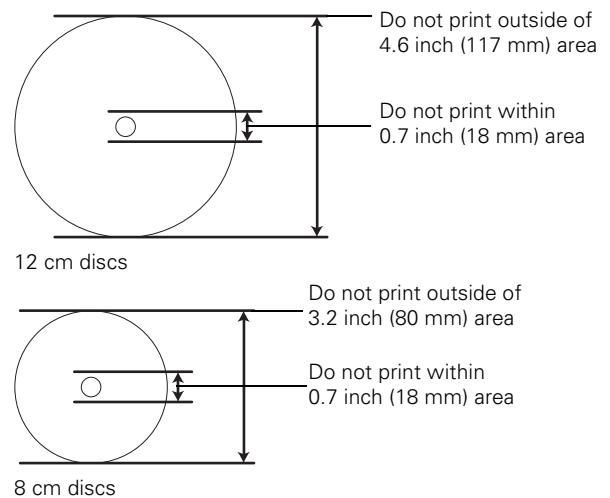
When printing borderless, quality may decline in the expanded printable area.

Envelopes



Left: 0.12 inch (3 mm) minimum
Bottom and Top: 0.20 inch (5 mm) minimum
Right: 0.78 inch (20 mm)

CD/DVDs



Caution:

Avoid printing in the clear plastic areas of your discs to prevent staining the disc with ink.

Memory Cards

Compatible memory cards	CompactFlash [®] Microdrive [™] SD [™] SDHC [™] miniSD ^{™*} miniSDHC [*] microSD [*] microSDHC [*] MultiMediaCard [™] Memory Stick [™] Memory Stick Duo ^{™*} Memory Stick PRO [™] Memory Stick PRO Duo ^{™*} Memory Stick Micro [*] MagicGate [™] Memory Stick MagicGate Memory Stick Duo ^{™*} xD-Picture Card [™] xD-Picture Card Type H xD-Picture Card Type M
	* Requires adapter
Memory card format	DCF (Design rule for Camera File system) version 1.0 or 2.0 compliant All card types standard version compliant.
Voltage requirements	3.3 V Maximum current is 500 mA

Photo data specifications

File format:	JPEG with the Exif Version 2.21 standard
Image size:	80 × 80 pixels to 9200 × 9200 pixels
Number of files:	Up to 999

Ink Cartridges

Note:

We recommend that you use genuine Epson cartridges and do not refill them. The use of other products may affect your print quality and could result in printer damage.

Yields vary considerably based on images printed, print settings, paper type, frequency of use, and temperature. For print quality, a small amount of ink remains in the cartridge after the “replace cartridge” indicator comes on.

For best printing results, use up a cartridge within six months of opening the package.

Color	Cyan, Magenta, Yellow, Light Cyan, Light Magenta, Black
Part number	78 or 77 (High Capacity)
Cartridge life	
Opened package:	Within 6 months
Unopened package:	Do not use if the date on the package has expired
Storage temperature	
–4 to 104 °F (–20 to 40 °C)	
1 month at 104 °F (40 °C)	
Ink freezes at 3.2 °F (–16 °C)	
Ink thaws and is usable after 3 hours at 77 °F (25 °C)	

Size and Weight

Size	
Stored:	Width: 17.7 inches (450 mm) Depth: 16.3 inches (413 mm) Height: 8.1 inches (205 mm)
Printing:	Width: 17.7 inches (450 mm) Depth: 21.1 inches (537 mm) Height: 11.1 inches (281 mm)
Weight	18.3 lb (8.3 kg) (without the ink cartridges, power cable, or CD/DVD tray)

Electrical

Power supply rating	100 to 120 V
Input voltage range	90 to 132 V
Rated frequency range	50 to 60 Hz
Input frequency range	49.5 to 60.5 Hz
Rated current	0.6 A (1.2 A maximum)
Power consumption	
Copying:	15 W
Low power:	4 W
Sleep mode:	1.3 W
Power off mode:	0.2 W

Environmental

Temperature

- Operation: 50 to 95 °F (10 to 35 °C)
- Storage: -4 to 104 °F (-20 to 40 °C)
1 month at 104 °F (40 °C)

Humidity

- Operation: 20 to 80% RH
- Storage: 5 to 85% RH
(without condensation)

Standards

- Safety: UL60950-1
CAN/CSA C22.2 No. 60950-1
- EMC: FCC part 15 Subpart B class B
CAN/CSA-CEI/IEC CISPR 22
Class B

Interfaces

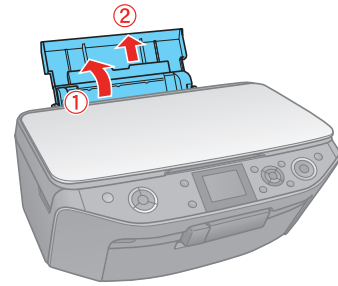
- USB ports: One USB 2.0 Hi-Speed (Device Class for computers); Type B port
One USB 2.0 Hi-Speed (for PictBridge™ compliant devices/Mass storage class for external storage)
Bluetooth® Ver. 2.0+EDR (with optional adapter)

Loading Paper

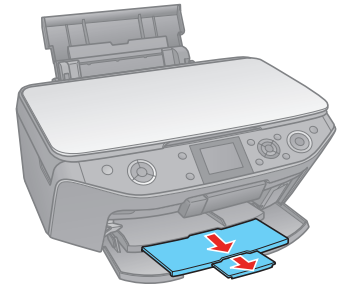
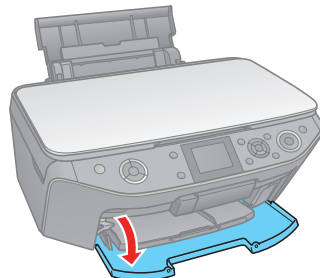
You can load up to 120 sheets of plain paper. You can load the following number of sheets of Epson special media:

Paper type	Load up to this many sheets
Plain paper	Approximately 120 sheets
Epson Presentation Paper Matte	100 sheets
Epson Bright White Paper	80 sheets
Epson Photo Paper Glossy Epson Premium Photo Paper Glossy Epson Ultra Premium Photo Paper Glossy Epson Ultra Premium Photo Paper Luster Epson Premium Photo Paper Semi-gloss Epson Premium Presentation Paper Matte	20 sheets
Epson Premium Presentation Paper Matte Double-sided Epson Photo Quality Self-adhesive Sheets Epson Iron-on Cool Peel Transfer Paper	1 sheet

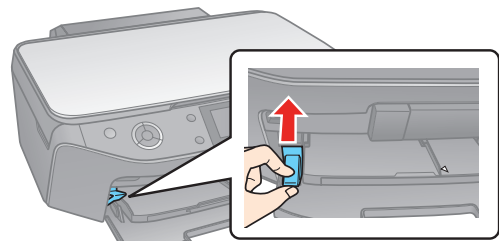
1. Open the paper support.



2. Open the front cover and pull out the output tray extensions.

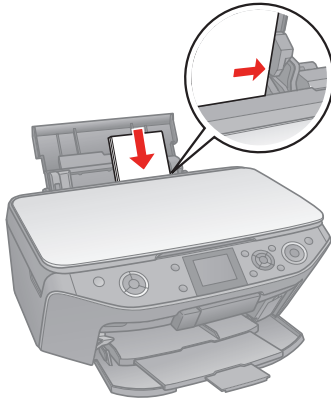


3. Make sure the output tray is in the correct position for printing on paper.



To print on paper, lift the tray lever **up** to lower the output tray.

4. Insert the paper, glossy or printable side up, short edge first, against the right side. Then slide the edge guide against the paper.



Always load paper short edge first, even for landscape printing. Load letterhead or pre-printed paper top edge first.

Note:

For details on paper and instructions on loading envelopes, see the on-screen *User's Guide*.

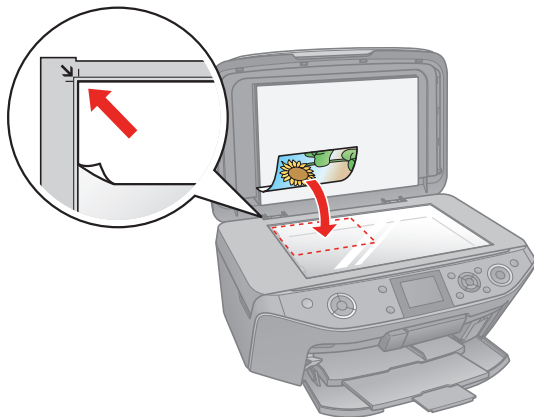
Copying a Document or Photo

Placing an Original on the Scanner Glass

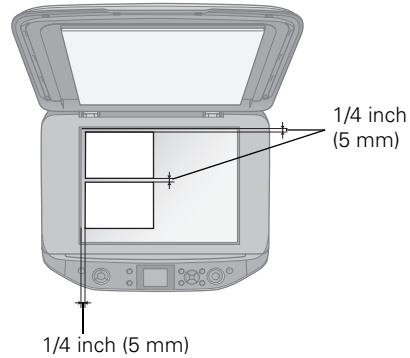
Caution:

Do not place anything on top of the RX595 Series or use the document cover as writing surface.

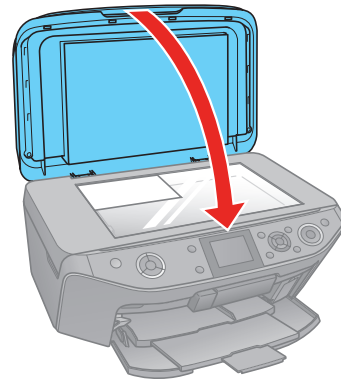
1. Open the document cover and place your original face-down on the scanner glass, with the top against the back left corner.



2. If you'll be copying two 4 × 6-inch photos, place them as shown below and at least 1/4 inch (5 mm) apart.



3. Close the cover gently so you don't move the original.



Copying Documents

1. Press the **On** button to turn on the RX595 Series.
2. Load letter-size plain paper or Epson specialty paper in the sheet feeder. See page 5.

Note:

Load only up to the recommended number of sheets; see page 5.

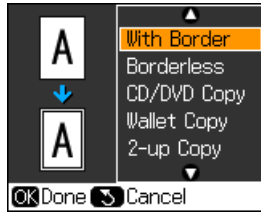
3. Place your original document on the scanner glass as described to the left.
4. Press the **Copy** button to enter copy mode, if necessary.
5. To print more than 1 copy, press + or - to select the number (up to 99).
6. Press **Left** or **Right** to select **Color** or **B&W** copies.
7. Press **Down**, then press **Right** to change the document type, if necessary.



Select **Text** for text documents (includes background removal). Select **Graphics** for documents containing text or graphics, or for printing photos on plain paper.

8. Press ▼, then press ► to change the layout, if necessary.

- With Border** leaves a small margin around the image.
- Borderless** expands the image all the way to the edge of the paper (slight cropping may occur).
- CD/DVD Copy** copies a label design only onto CDs or DVDs. See page 8.
- Wallet Copy** copies 9 wallet-size images of your original on a sheet of paper.
- 2-up Copy** copies 2 originals on one sheet of paper; follow the screen instructions to copy each original.
- Repeat Copy** copies a small original as many times as it will fit on letter-size paper
- Repeat-4** copies 4 small originals on letter-size paper.



(Not all layouts are appropriate for all documents or settings.)

9. To copy at 100% size on letter-size plain paper, press ◊ **Start**. (To cancel copying, press ⊞ **Stop/Clear Settings**.)

To change any of the print settings displayed on the screen, press ≡ **Menu**. See the column to the right.

Copying Photos

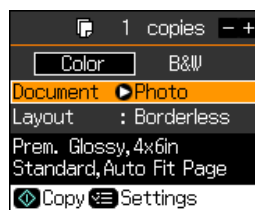
1. Press the ⏻ **On** button to turn on the RX595 Series.
2. Load 4 × 6-inch, 5 × 7-inch, 8 × 10-inch, letter-, or A4-size Epson photo paper in the sheet feeder. See page 5.

Note:

Load only up to the recommended number of sheets; see page 5. To print photos on plain paper, see the previous section.

3. Place your original photo on the scanner glass, as described on page 6.

4. Press the **Copy** button to enter copy mode, if necessary.



5. To print more than 1 copy, press + or – to select the number.

6. Press ◀ or ▶ to select **Color** or **B&W** copies.

7. Press ▼, then press ► to change the document type to **Photo**.

8. If you want to size your photos to print on 4 × 6-inch borderless Premium Photo Paper Glossy or Semi-gloss, press ◊ **Start**.

To change any copy settings, go to the next step.

9. Press ▼, then press ► to change the layout, if necessary.

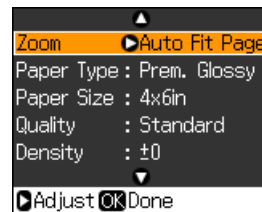
- With Border** leaves a small margin around the photo.
- Borderless** expands the photo all the way to the edge of the paper (slight cropping may occur).
- CD/DVD Copy** copies a label design only onto CDs or DVDs. See page 8.
- Wallet Copy** copies 9 wallet-size photos on a sheet of paper.
- 2-up Copy** copies 2 photos on one sheet of paper; follow the screen instructions to copy each photo.
- Repeat Copy** copies a small photo as many times as it will fit on one sheet of paper
- Repeat-4** copies 4 small photos on one sheet of paper.

10. To change any of the print settings displayed on the screen, press ≡ **Menu**. See the next section.

11. When you're ready to copy, press ◊ **Start**. (To cancel copying, press ⊞ **Stop/Clear Settings**.)

Copy Mode Print Settings

To change any of the copy mode print settings, press ≡ **Menu**.



- To adjust the copy size, select **Zoom** and choose either **Actual** (to select a percentage using + or –), **Auto Fit Page** (to automatically size the image to fit your paper), or any of the specific sizing options offered.
- To change the paper type, select **Paper Type** and choose the type of paper you loaded.

Paper type	Paper Type setting
Plain paper	Plain Paper
Epson Bright White Paper	
Epson Presentation Paper Matte	
Epson Premium Presentation Paper Matte	Matte
Epson Premium Photo Paper Glossy	Prem. Glossy
Epson Premium Photo Paper Semi-gloss	
Epson Ultra Premium Photo Paper Glossy	Ultra Glossy
Epson Photo Paper Glossy	Photo Paper

Epson Stylus Photo RX595 Series

- ❑ To change the paper size, select **Paper Size** and choose the size of paper you loaded.
- ❑ To change the copy quality, select **Quality** and choose **Standard**, **Best**, or **Draft**.
- ❑ To adjust the darkness or lightness of the copy, select **Density** and choose a higher (darker) or lower (lighter) setting.
- ❑ To adjust the amount of image expansion when printing borderless photos, select **Expansion** and choose **Standard**, **Min**, or **Mid**.

Note:

You may see white borders on your printed photo if you use the **Min** setting.

Copying Onto a CD or DVD

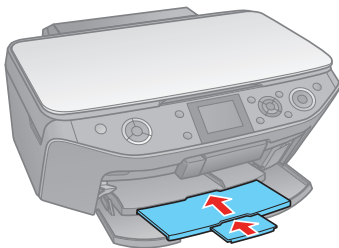
You can copy a printed photo, illustration, document, or CD/DVD label design directly onto an ink jet-printable 12-cm CD or DVD for a custom look. You can also check your design on plain paper to see how the label will appear.

Note:

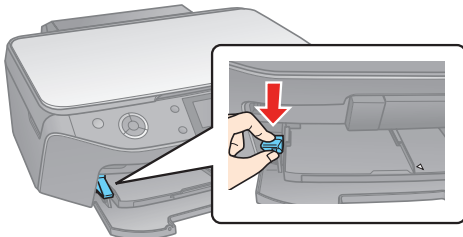
If you're copying onto discs where the printable area extends to within 0.16 inch (4 mm) of the edge of the center hole, you may need to adjust the **CD-Inner** setting on the RX595 Series control panel. See page 9.

Load CD/DVD

1. First burn files, music, or video onto your CD/DVD before printing on it to prevent errors.
2. Turn on the RX595 Series.
3. Push in the output tray extensions.



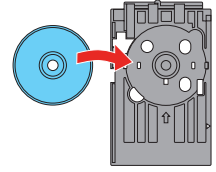
4. Push down the tray lever to lift the output tray into the CD/DVD position.



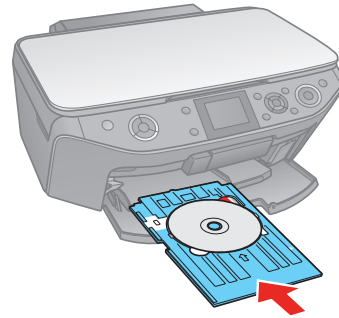
5. Place your disc on the CD/DVD tray with the label side up.

Note:

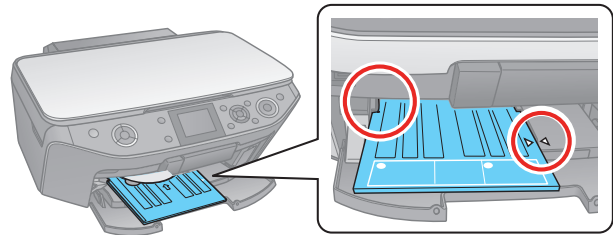
For small 8-cm discs, place the adapter on the tray and then place the disc in the adapter. Use only the Epson Print CD software to print on 8-cm discs.



6. Insert the tray into the guides in the output tray.



7. Push in the tray until the arrows are aligned. Make sure the tray is beneath the guide rails.



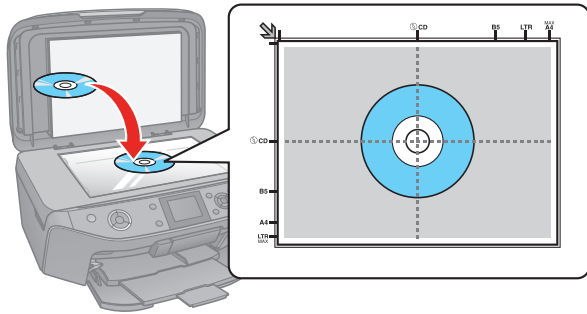
Caution:

Do not turn the RX595 Series on or off with a CD or DVD loaded in it. Always remove the disc first.

Placing an Original CD/DVD on the Scanner Glass

You can place a CD/DVD label-side-down on the scanner glass and copy the label onto an ink jet-printable CD/DVD.

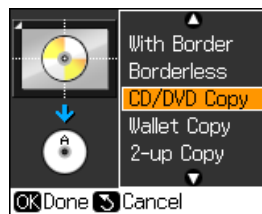
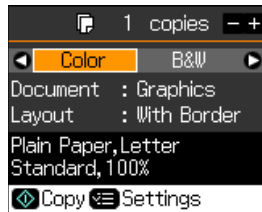
1. Open the document cover.
2. Place your original CD/DVD label-side-down in the center of the scanner glass as shown below.



3. Close the document cover gently to keep your CD/DVD in place.

Copy Your Label Design Onto a CD/DVD

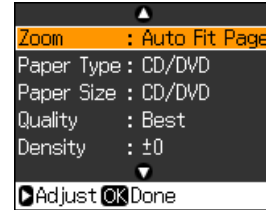
1. Load your CD/DVD as described on page 8 (or plain paper to check your design; see page 5) into the RX595 Series.
2. Place your original printed photo, illustration, or document (see page 6), or your CD/DVD (see the previous section) on the scanner glass.
3. Press the **Copy** button to enter copy mode, if necessary.
4. To print more than 1 copy, press + or - to select the number (up to 99).
5. Press ◀ or ▶ to select **Color** or **B&W** copies.
6. Press ▼, then press ▶ to change the document type, if necessary. Select **Graphics** for illustrations or **Photo** for photos. (Do not select **Text** when copying onto a CD/DVD.)
7. Press ▼, then press ▶ to change the layout to **CD/DVD Copy**.
8. Press **OK**.
9. To copy your design onto a CD or DVD, press ⬄ **Start**.



To copy a test label onto plain paper, or to adjust the position or ink density of the label, press ⌘ **Menu** and see the next section.

CD/DVD Print Settings

To copy a test label onto plain paper, or to adjust the position or ink density of the label, press ⌘ **Menu**. (Zoom, Paper Size, and Quality are set automatically for CD/DVD printing.)



- ❑ To print a test label, select **Paper Type** and choose **Plain Paper**.
- ❑ To adjust the ink density if ink smears on your printed CD/DVD, select **Density** and choose a lower density setting. Adjusting the ink density may be necessary for each brand of disc you use due to differences in ink absorption quality by disc manufacturers.
- ❑ To adjust the amount of image expansion, select **Expansion** and choose **Standard**, **Min**, or **Mid**.
- ❑ To adjust the position of the image on your discs, select **CD Inner-Outer** and adjust the distance from the center and edge of your discs.

Printing on a CD or DVD

You can use your RX595 Series to print a design directly onto ink jet-printable CDs or DVDs to create a custom label. You can print on CD/DVDs using the Epson Print CD computer software that came with your RX595 Series, or using the RX595 Series control panel. See the on-screen *User's Guide* for instructions.

Restoring, Cropping, and Copying Multiple Photos

1. Press the **On** button to turn on the RX595 Series.
2. Load 4 × 6-inch, 5 × 7-inch, 8 × 10-inch, letter-, or A4-size Epson photo paper in the sheet feeder. See page 5.

Note:

Load only up to the recommended number of sheets. See page 5.

3. Press the **Specialty Print** button to enter Specialty Print mode.
4. Press **OK**.
5. To turn on **Color Restoration** to restore colors in faded photos as you copy, press **▶** and select **On**. (If your photo is not faded, do not turn on Color Restoration.)
6. Press **OK**.
7. Place your original photo on the scanner glass. See page 6.



Note:

To copy two photos, place them 1/4 inch (5 mm) apart as shown on the display screen.

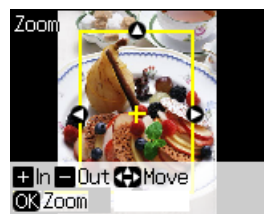
8. Press **OK**.
9. After scanning, you see a preview of your photo and these settings on the screen:

To print more than 1 copy, press + or - to select the number.



10. If you want to crop your photo and enlarge the resulting image area to fit onto your paper, press the **Display/Crop** button.

- To resize the image area, press + or -.
- To move the image area, use the arrow buttons.
- To check the zoomed image, press **OK**, then press **OK** again or press **↶ Back** to change the crop area.



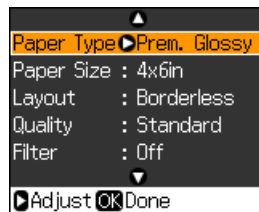
If you're copying 2 photos, press **▶** to preview the next photo. Then press the **Display/Crop** button and crop the second photo as necessary.

11. If you want to size your photos to print on 4 × 6-inch borderless Premium Photo Paper Glossy or Semi-gloss, press **◊ Start**. (To cancel copying, press **⊗ Stop/Clear Settings**.)

To change any of the print settings displayed on the screen, press **≡ Menu** and see the next section.

Reprint/Restore Print Settings

To change any of the print settings, press **≡ Menu**. (Quality is set to Standard automatically to reprint or restore photos.)



- To change the paper type, select **Paper Type** and choose the type of paper you loaded.

Paper type	Paper Type setting
Epson Premium Photo Paper Glossy	Prem. Glossy
Epson Premium Photo Paper Semi-gloss	
Epson Ultra Premium Photo Paper Glossy	Ultra Glossy
Epson Photo Paper Glossy	Photo Paper
Epson Premium Presentation Paper Matte	Matte

- To change the paper size, select **Paper Size** and choose the size of paper you loaded.
- To change the layout, select **Layout** and choose **With Border** to leave a small margin around the image or select **Borderless** to expand the image all the way to the edge of the paper (slight cropping may occur).
- If you want to print a color photo in black and white, select **Filter** and choose **B&W**.
- To adjust the amount of image expansion when printing borderless photos, select **Expansion** and choose **Standard**, **Min**, or **Mid**.

Note:

You may see white borders on your printed photo if you use the **Min** setting.

Printing From a Memory Card

You can print photos directly from your digital camera's memory card by inserting it into the RX595 Series memory card slots. (You can also use these instructions to print from a USB flash drive connected to the EXT. I/F port.)

See the sections below to print individual photos or photos by the date they were taken. See the on-screen *User's Guide* to perform the following memory card operations:

- ❑ Printing all photos on a memory card
- ❑ Viewing photos as a slide show and printing them
- ❑ Printing photos using DPOF (Digital Print Order Format)
- ❑ Printing an index sheet to select photos for printing
- ❑ Printing photo greeting cards
- ❑ Transferring files between the RX595 Series and a computer or other device
- ❑ Scanning to a memory card or other device

Compatible Memory Cards and Files

Make sure your memory card is one of the following types:

Slot	Type of card
Top slot	SD SDHC miniSD* miniSDHC* microSD* microSDHC* MultiMediaCard™ Memory Stick Memory Stick Duo* Memory Stick PRO Memory Stick PRO Duo* Memory Stick Micro* MagicGate Memory Stick MagicGate Memory Stick Duo* xD-Picture Card xD-Picture Card Type H xD-Picture Card Type M
Bottom slot	CompactFlash Microdrive

* Requires adapter

Make sure the files on the card are compatible with your RX595 Series.

File format	JPEG with the Exif version 2.21 standard
Image size	80 × 80 pixels to 9200 × 9200 pixels
Number of files	Up to 999

You can print other file types directly from your computer.

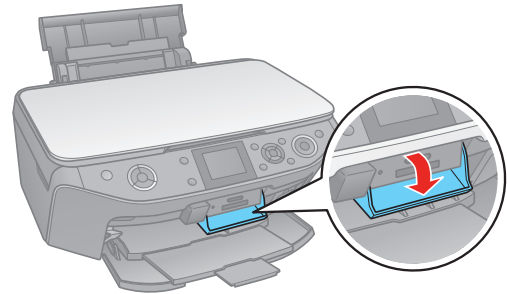
Inserting the Card

Insert one card at a time in one of the RX595 Series memory card slots. Insert the type of card you have into the correct slot.

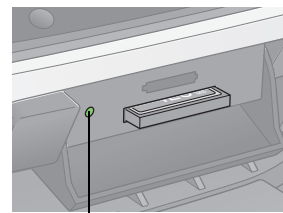
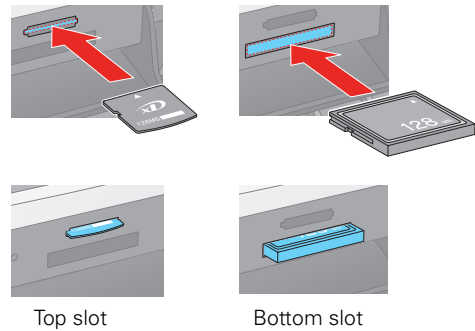
Note:

Also consult your memory card and adapter documentation for any special use instructions for your card or adapter.

1. Turn on the RX595 Series.
2. Open the memory card door.



3. Insert your card into the correct slot as shown below and listed to the left. (It won't go in all the way.) The memory card access light flashes, then stays lit.



Memory card access light

Caution:

Do not remove a card or turn off the RX595 Series when the memory card access light is flashing or you may lose photos on the card.

4. Press the Memory Card button.

You can view the photos on your card and select them for printing, as described on page 12.

Printing Photos

Select Individual Photos for Printing

You can select individual photos for printing as you view them on the display screen.

1. Press ◀ or ▶ to select **View and Print Photos**, if necessary, then press **OK**.
2. Press ◀ or ▶ to move through your photos and display one that you want to print.
3. Press the + button to select the number of copies you want of that photo.



4. If you want to crop your photo and enlarge the resulting image area to fit onto your paper, press the **Display/Crop** button.
 - To resize the image area, press + or -.
 - To move the image area, use the arrow buttons.
 - To rotate the image area, press ≡ **Menu** to toggle between vertical and horizontal orientation.
 - To check the zoomed image, press **OK**, then press **OK** again or press ⏪ **Back** to change the crop area.
5. Repeat steps 2 through 4 to select more photos, if you want.
6. To change any of the print settings displayed on the screen, or use red eye reduction or other features, press ≡ **Menu** and select your settings. (See the column to the right for details.)
7. When you're ready to print, press ⏩ **Start**. (To cancel printing, press ⏹ **Stop/Clear Settings**.)



Print Photos by Date

You can quickly print photos by the date they were taken.

1. Press ◀ or ▶ to select **Print by Date**, then press **OK**.
2. Highlight any dates shown and press ▶ to print photos taken on that date.
3. Press **OK**.
4. To print more than 1 copy, press + or - to select the number (up to 99).
5. Press **OK**. You can review your photos or select different numbers of copies for each one.
6. If you're ready to print, press ⏩ **Start**.

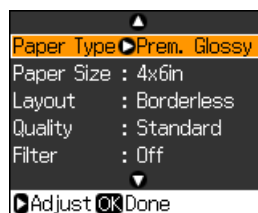


To change any of the print settings, or use red eye reduction or other features, press ≡ **Menu** and select your settings. (See the next section for details.)

7. When you're ready to print, press ⏩ **Start**. (To cancel printing, press ⏹ **Stop/Clear Settings**.)

Memory Card Mode Print Settings

Press ≡ **Menu** to change these print settings while printing from a memory card:

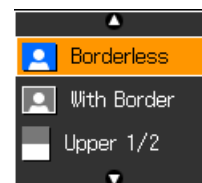


- To change the paper type, select **Paper Type** and choose the type of paper you loaded.

Paper type	Paper Type setting
Epson Premium Photo Paper Glossy	Prem. Glossy
Epson Premium Photo Paper Semi-gloss	
Epson Ultra Premium Photo Paper Glossy	Ultra Glossy
Epson Photo Paper Glossy	Photo Paper
Plain paper	Plain Paper
Epson Bright White Paper	
Epson Presentation Paper Matte	
Epson Premium Presentation Paper Matte	Matte

- To change the paper size, select **Paper Size** and choose the size of paper you loaded.

- To change the layout, select **Layout** and choose one of settings shown on the screen.



Note:
Borderless expands the image all the way to the edge of the paper (slight cropping may occur; see **Expansion** below).

- To change the copy quality, select **Quality** and choose **Standard**, **Draft**, or **Best**.
- If you want to print a color photo in black and white or sepia tone, select **Filter** and select **B&W** or **Sepia**.
- For the best quality printing, select **Enhance** and choose **PhotoEnhance™**. This automatically analyzes your photos and, if necessary, adjusts the brightness, contrast, and saturation. You can also choose **None** to turn off this adjustment, or **P.I.M.** to use your camera's **PRINT Image Matching®** or **Exif Print** adjustments.

Note:

PhotoEnhance uses a sophisticated face recognition technology to optimize photos that include faces. For this to work, both eyes and the nose must be visible in the subject's face. If your photo includes a face with an intentional color cast, such as a bronze statue, you may want to turn off PhotoEnhance to retain the special color effects.

- ❑ To remove the effects of red eyes in portraits, turn on **Reduce Red Eye**. (It's a good idea to use this feature on your camera too, if included with your model.)
- ❑ To adjust the **Brightness, Contrast, Sharpness, or Saturation** in your printed photos, select these options and select more or less of the effect. (Affects all photos you're printing.)
- ❑ To print the date on your photos and select the format for it, select **Date** and choose the format you want. (Affects all photos you're printing.)
- ❑ To print information about your camera's settings for the photo, turn on **Print Info**. (Affects all photos you're printing.)
- ❑ To automatically crop your photo to fit in your selected layout, turn on **Fit Frame**. Turn it off to leave a small white margin, if necessary. (Affects all photos you're printing.)
- ❑ To improve print quality but slow down printing, turn off **Bidirectional** (choose On for faster print speed). (Affects all photos you're printing.)
- ❑ To adjust the amount of image expansion when printing borderless photos, select **Expansion** and choose **Standard, Min, or Mid**. (Affects all photos you're printing.)

Note:

You may see white borders on your printed photo if you use the **Min** setting.

Printing From Other External Devices

If you have a digital camera that supports PictBridge printing, you can connect it to the RX595 Series and print your photos directly from the camera. Check your camera manual to see if it is compatible.

You can print from an external storage device connected to the RX595 Series, such as a USB flash drive, or an external CD burner, Zip® drive, or magneto-optical drive. You can also copy files from your memory card to these devices.

You can print photos wirelessly from Bluetooth-enabled devices, such as digital cameras, PDAs (Personal Digital Assistants), phones, and computers. To do this, you need to purchase the optional Bluetooth Photo Print Adapter (part number C12C824383), available from Epson.

See the on-screen *User's Guide* for instructions on printing or transferring files from any of these devices.

Scanning to a Computer

You can use your RX595 Series to scan a photo or document and save it on your computer or other device. You can even restore and correct photographs as you scan.

The Epson Scan software provides three scanning modes:

- ❑ **Full Auto Mode** scans quickly and easily using automatic settings.
- ❑ **Home Mode** previews your image and provides preset options for scanning.
- ❑ **Professional Mode** previews your image and provides a full array of tools.

Note:

For detailed scanning instructions, or instructions on scanning a photo or document to a memory card or USB storage device, see the on-screen *User's Guide*.

Replacing an Ink Cartridge

Your RX595 Series and its software will let you know when an ink cartridge is low or expended.

If an ink cartridge is low or expended, you see a message on the RX595 Series display screen. If a cartridge is expended, you must replace it to be able to print. If a cartridge is low, you can continue printing until a cartridge needs replacement.

Note:

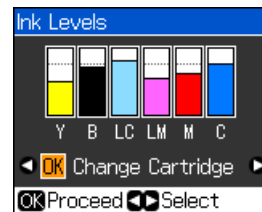
You cannot print or copy when an ink cartridge is expended even if the other cartridges are not expended. Replace any expended cartridges before printing or copying.

When an installed ink cartridge is more than six months old, you may need to replace it if your printouts do not look their best, even after cleaning (see page 15) and aligning (see page 15) the print head.

Checking the Ink Supply

You can check the ink cartridge status anytime using the RX595 Series display screen. You can also check the status with your Windows® or Macintosh® software; see the on-screen *User's Guide*.

1. Press the **Setup** button.
2. Select **Ink Levels** and press **OK**.
A cartridge marked with a ! is getting low on ink. Replace the cartridge, if necessary.
3. Press **OK** to exit.



Removing and Installing Ink Cartridges

Caution:

Do not open ink cartridge packages until you are ready to install the ink. Cartridges are vacuum packed to maintain reliability.

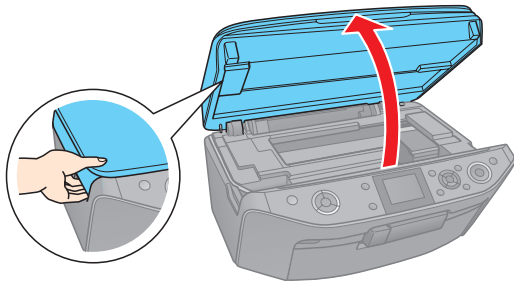
Remove the CD/DVD tray and return the output tray to the paper position before replacing ink cartridges.

1. Turn on the RX595 Series.

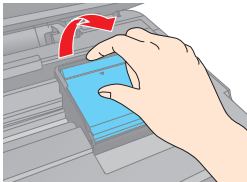
If a cartridge is low or expended, you see a message on the RX595 Series display screen. If a cartridge is expended, you must replace it to be able to print. If a cartridge is low, you can continue printing until the cartridge needs replacement.

If you're replacing a cartridge before you see a message on the RX595 Series display screen, press the **Setup** button, select **Maintenance**, and press **OK**. Then select **Change Ink Cartridge** and press **OK**.

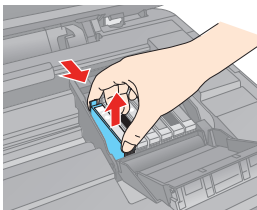
2. Open the scanner.



3. Open the cartridge cover.



4. Squeeze the tab on the cartridge and lift the cartridge straight up to remove it. Dispose of it carefully. Do not take the used cartridge apart or try to refill it.



Warning:

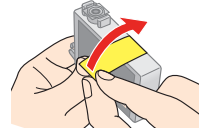
If ink gets on your hands, wash them thoroughly with soap and water. If ink gets into your eyes, flush them immediately with water. Keep ink cartridges out of the reach of children.

5. Remove the cartridge from the package, but be careful not to touch the green chip on the cartridge.

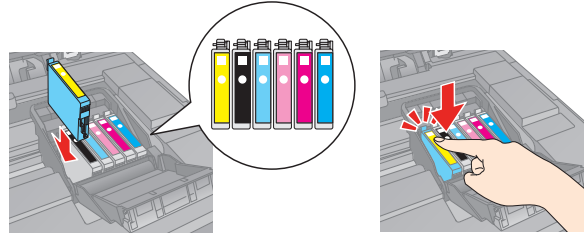
6. Remove the yellow tape from the bottom of the cartridge.

Caution:

Do not remove any other labels or seals, or ink will leak.



7. Insert the new cartridge into the holder and push it down until it clicks into place.



8. Once you replace all the necessary cartridges, close the cartridge cover and push it down until it clicks into place.



9. Close the scanner.

10. Press **OK** to begin charging the ink. This takes about 2 minutes. When you see a completion message on the display screen, ink charging is finished.

Caution:

Never turn off the RX595 Series while ink is charging or you'll waste ink.

If you see an ink replacement message on the display screen, press **OK** and press down all the cartridges securely.

If you remove a low or expended ink cartridge, you cannot reinstall and use the cartridge.

Checking and Cleaning the Print Head

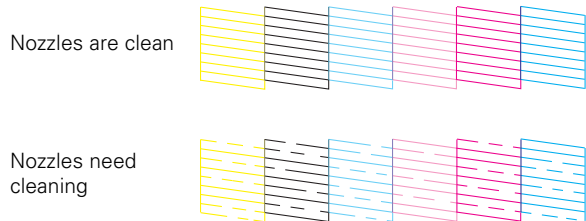
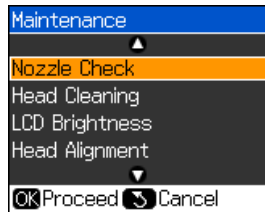
You can print a nozzle check pattern to check for clogged nozzles and clean the print head using the RX595 Series control panel or your software (see the on-screen *User's Guide*).

Note:

You cannot clean the print head if an ink cartridge is low or expended. You must replace the cartridge first (see page 13).

Checking the Print Head Nozzles

1. Load a few sheets of plain paper in the sheet feeder. See page 5.
2. Press the **Setup** button.
3. Select **Maintenance** and press **OK**.
4. Select **Nozzle Check** and press **OK**.
5. Press **Start**.
6. Check the nozzle check pattern that prints to see if there are gaps in the lines.



7. If there are no gaps, the print head is clean. Click **OK** to continue printing. If there are gaps or the pattern is faint, press **Start** to clean the print head. Repeat if necessary.

Cleaning the Print Head

1. Load a few sheets of plain paper in the sheet feeder. See page 5.
2. Press the **Setup** button.
3. Select **Maintenance** and press **OK**.
4. Select **Head Cleaning** and press **OK**.
5. Press **Start**.



Cleaning takes around 1 minute. When it's finished, you see a message on the display screen.

Caution:

Never turn off the RX595 Series during a cleaning cycle or you may damage it.

6. Press **Start** to run a nozzle check and confirm that the print head is clean.

You may need to clean the print head up to 3 times. You can also turn the RX595 Series off and wait at least 6 hours. Then try printing again.

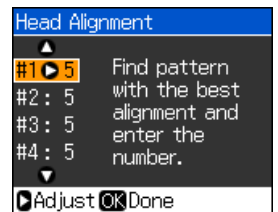
Aligning the Print Head

If your printouts become grainy or blurry, or you see dark or light bands across them, you may need to align the print head. You can align the print head using the control panel or your software (see the on-screen *User's Guide*).

1. Load a few sheets of plain paper in the sheet feeder. See page 5.
2. Press the **Setup** button.
3. Select **Maintenance** and press **OK**.
4. Select **Head Alignment** and press **OK**.
5. Press **Start**. The alignment sheet prints.



6. Check the alignment pattern that prints. Find the pattern in each set that has the least visible vertical lines.
7. Press **Right Arrow** to enter the number of the best pattern in the first set, then repeat for the other sets.
8. Press **OK** when you're done.



Cleaning the RX595 Series

To keep the RX595 Series working at its best, you should clean it several times a year.

Caution:

Do not use a hard brush, benzene, alcohol, or paint thinner to clean the RX595 Series or you may damage it. Do not use oil or other lubricants inside the RX595 Series or let water get inside it.

1. Turn off the RX595 Series.
2. Unplug the power cable.
3. Disconnect the USB cable.
4. Remove all the paper.
5. Clean the sheet feeder using a soft brush.
6. Clean the scanner glass with a soft, lint-free cloth moistened with a little glass cleaner.


Caution:

Do not spray glass cleaner directly on the glass.

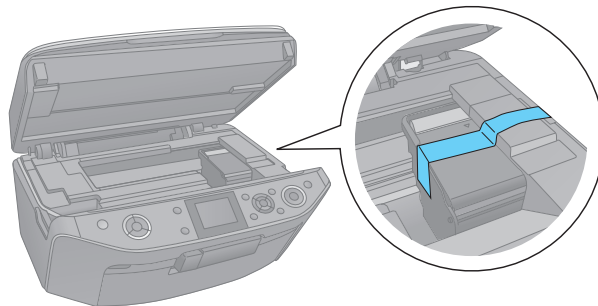
7. Clean the LCD screen with a soft, dry cloth. Do not use liquid or chemical cleansers.
8. Clean the document cover with a soft, non-abrasive microfiber-type cloth.
9. Close the document cover and paper support, then clean the outer case with a soft cloth dampened with mild detergent.

Transporting the RX595 Series

If you need to ship your RX595 Series or transport it a long distance, prepare it for transportation as follows:

1. Turn off the RX595 Series.
2. Unplug all the connected cables.
3. Remove all the paper.
4. Close the paper support and output tray.
5. Lift up the scanner and check that the ink cartridge holder is all the way to the right (the home position). If necessary, turn on the RX595 Series, then turn it off again using the  On button.

6. Fasten the ink cartridge holder to the case using tape. Leave the ink cartridges installed to avoid damaging the printer.



7. Close the scanner.
8. Pack the RX595 Series in its original box or one of a similar size using protective material to keep it from moving inside the box.
9. Keep the RX595 Series level during transportation to prevent damage.
10. After unpacking the RX595 Series, remove the tape securing the ink cartridge holder.

If print quality has declined when you print again in a new location, clean (see page 15) and align (see page 15) the print head.

Related Documentation

CPD-23917	Epson Stylus Photo RX595 Series <i>Start Here</i>
CPD-23918	Epson Stylus Photo RX595 Series <i>Quick Guide</i>
CPD-23919	Epson Stylus Photo RX595 Series CD-ROM with on-screen <i>User's Guide</i>