

Ultra Hi-Definition RX680 Photo All-in-One

Print | Copy | Scan | Photo



Quick Guide

Basic Copying, Printing, and Scanning
Maintaining Your All-in-One
Solving Problems

Contents

Introduction	4
Printer Parts	5
Loading Paper	6
Loading in the Front Paper Cassette	6
Loading in the Rear Sheet Feeder	8
Using Special Papers	9
Copying a Photo or Document	11
Placing the Original on the Glass	11
Copying a Document	12
Copying a Photo	13
Editing Photos While You Copy	14
Printing From a Memory Card, Camera, or Other Device . .	16
Printing From a Memory Card	16
Printing From a USB Flash Drive	19
Viewing and Selecting Photos	20
Automatically Correcting Photos	21
Printing Custom Photo Greeting Cards	21
Printing From a Digital Camera	23
Printing From Your Computer	24
Printing in Windows	24
Printing With a Macintosh	26
Selecting the Correct Paper Type	28
Scanning a Photo or Document	29
Basic Scanning	29
Restoring and Correcting Photos	30

Maintaining Your All-in-One	31
Checking the Print Head Nozzles	31
Cleaning the Print Head	32
Checking the Ink Cartridge Status	33
Replacing Ink Cartridges	35
Solving Problems	37
Checking for Software Updates	37
Display Screen Messages	37
Problems and Solutions	38
Where To Get Help	41
Notices	42

Introduction

After you set up your Epson Stylus® Photo RX680 Series (see the *Start Here* sheet), turn to this *Quick Guide* and your on-screen *User's Guide* for instructions.

Features	Where to find information
Copy documents or photos (including red-eye reduction, automatic restoration of faded photos, and instant photo reprints)	See this <i>Quick Guide</i> .
Copy onto a CD or DVD (copy a photo, design, or another disc label directly onto an ink jet-printable CD/DVD)	See the on-screen <i>User's Guide</i> .
Print from a memory card, flash drive, or camera (view your photos individually or by date, preview auto correction, and print from a camera)	See this <i>Quick Guide</i> for the basics. See the on-screen <i>User's Guide</i> for details.
Print custom photo greeting cards	See this <i>Quick Guide</i> .
Print directly on a CD/DVD (print on discs with or without a computer)	See the on-screen <i>User's Guide</i> .
Print from or scan to your computer (print and scan with a variety of custom settings, including auto duplexing, using your Epson® software)	See this <i>Quick Guide</i> for the basics. See the on-screen <i>User's Guide</i> for details.
Print photos wirelessly from a phone or PDA (print using the optional Bluetooth® adapter)	See the on-screen <i>User's Guide</i> .
Scan to a memory card (scan a photo or document and store it on a memory card without a computer)	See the on-screen <i>User's Guide</i> .
Perform routine maintenance and solve problems	See this <i>Quick Guide</i> for the basics. See the on-screen <i>User's Guide</i> for details.

Please follow these guidelines as you read the instructions:

Warning:

Warnings must be followed carefully to avoid bodily injury.

Caution:

Cautions must be observed to avoid damage to your equipment.

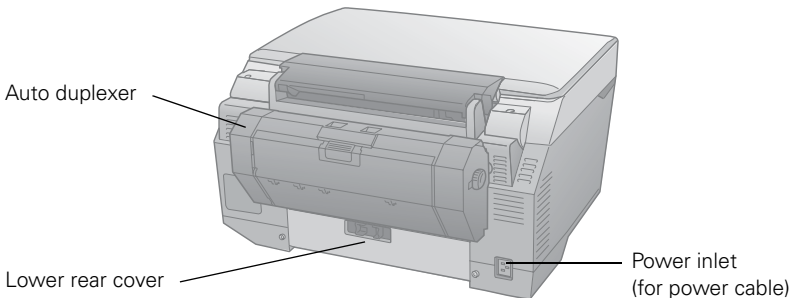
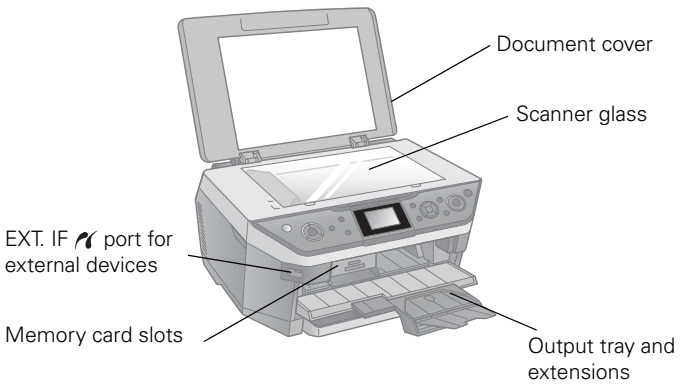
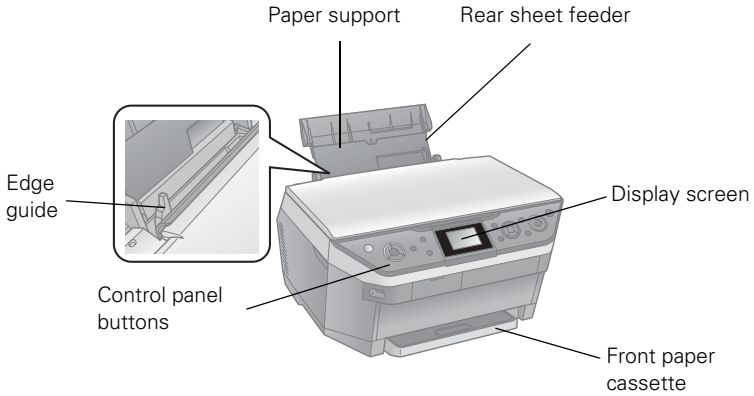
Note:

Notes contain important information about your all-in-one.

Tip:

Tips contain hints for better copying, scanning, and printing.

Printer Parts

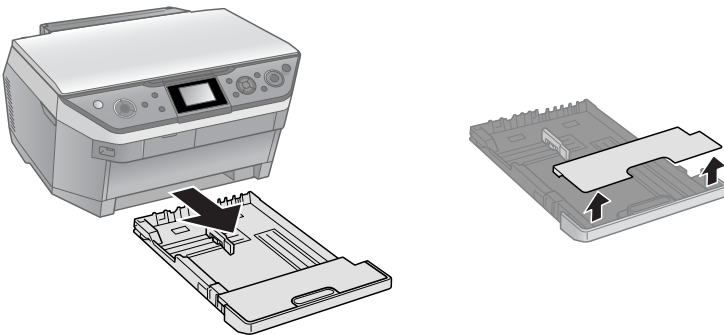


Loading Paper

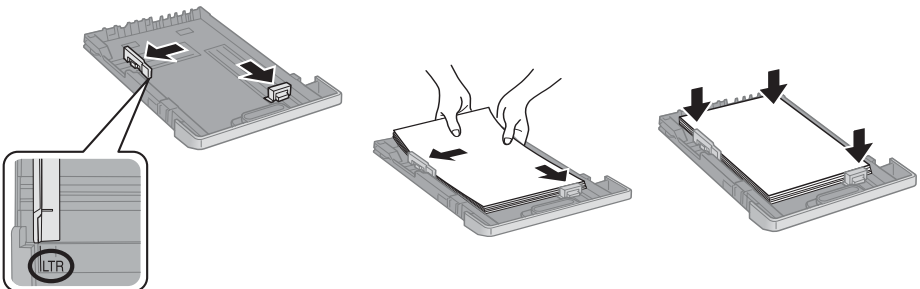
The Epson Stylus Photo RX680 Series all-in-one allows you to have two different types of paper loaded at the same time. For example, you can keep plain paper loaded in the front paper cassette and use the rear sheet feeder for various sizes of photo paper.

Loading in the Front Paper Cassette

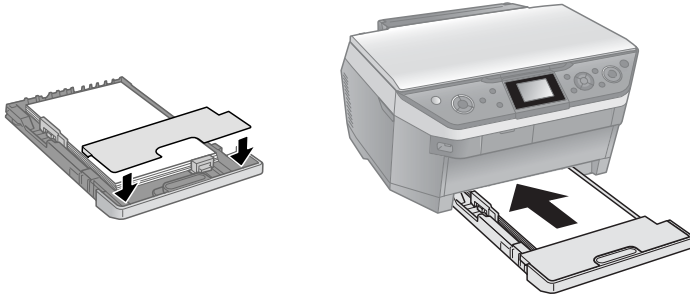
1. Pull out the paper cassette and remove the cover.



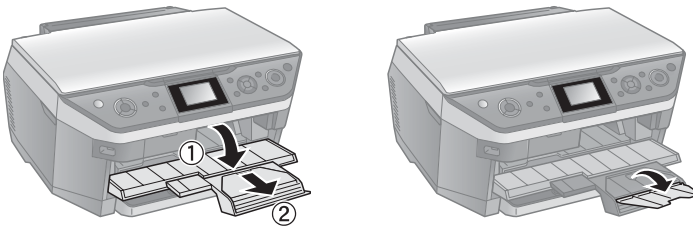
2. Press in the tab on the edge guides and slide them to fit the paper.
3. Insert the paper with the glossy or printable side face-down, and the short edge against the back of the paper cassette.



4. Replace the paper cassette cover and insert the cassette back into the printer.



5. Open the output tray and its extensions.



Always load paper face-down, with the short edge facing the back of the paper cassette. Load letterhead or pre-printed paper with the top edge facing the back of the cassette.

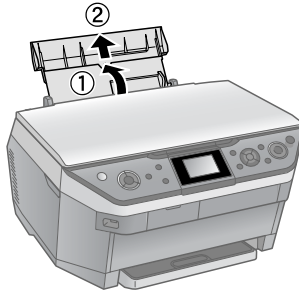
Do not load envelopes in the paper cassette.

Note:

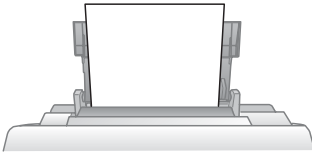
For details on paper, including the maximum number of sheets you can load, see your on-screen *User's Guide*.

Loading in the Rear Sheet Feeder

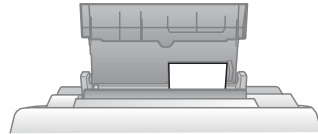
1. Open the paper support and pull up the extension.



2. Insert the paper, glossy or printable side up, short edge first, against the right side.

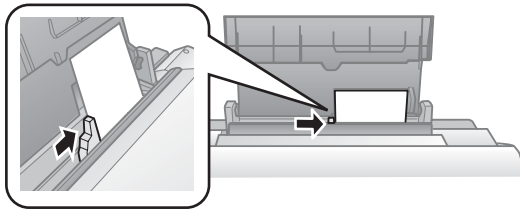


Letter-size paper

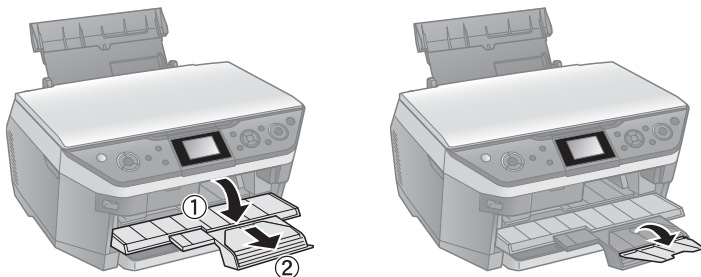


Smaller photo paper

3. Slide the edge guide against the paper.



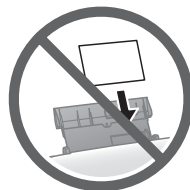
4. Open the output tray and its extensions.



Always load paper short edge first, even for landscape printing.
Load letterhead or pre-printed paper top edge first.

Note:

For details on paper and instructions on loading envelopes in the rear sheet feeder, see your on-screen *User's Guide*.



Using Special Papers

Epson offers a wide array of high quality papers, making it easy to maximize the impact of your photos, presentations, and creative projects.

You can purchase genuine Epson ink and paper at Epson Supplies CentralSM at www.epson.com/ink3 (U.S. sales) or ww.epson.ca (Canadian sales). You can also purchase supplies from an Epson authorized reseller. To find the nearest one, call 800-GO-EPSON (800-463-7766).

Epson Special Papers

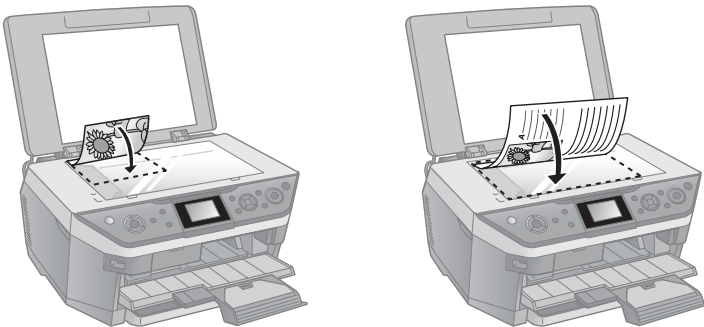
Paper name	Size	Part number	Sheet count
Epson Ultra Premium Photo Paper Glossy	Borderless 4 × 6 inches	S041934 S042181 S042174	50 60 100
	Borderless 5 × 7 inches	S041945	20
	Borderless 8 × 10 inches	S041946	20
	Letter (8.5 × 11 inches)	S041935 S042182 S042175	20 25 50
Epson Ultra Premium Photo Paper Luster	Letter (8.5 × 11 inches)	S041405	50
Epson Premium Photo Paper Glossy	Borderless 4 × 6 inches	S041808 S041727	40 100
	Borderless 5 × 7 inches	S041464	20
	Borderless 8 × 10 inches	S041465	20
	Letter (8.5 × 11 inches)	S041286 S042183 S041667	20 25 50
Epson Premium Photo Paper Semi-gloss	Borderless 4 × 6 inches	S041982	40
	Letter (8.5 × 11 inches)	S041331	20
Epson Photo Paper Glossy	Borderless 4 × 6 inches	S041809 S042038	50 100
	Letter (8.5 × 11 inches)	S041141 S041649 S041271	20 50 100
Epson Bright White Paper	Letter (8.5 × 11 inches)	S041586	500
Epson Premium Presentation Paper Matte	Borderless 8 × 10 inches	S041467	50
	Letter (8.5 × 11 inches)	S041257 S042180	50 100
Epson Premium Presentation Paper Matte Double-sided	Letter (8.5 × 11 inches)	S041568	50
Epson Presentation Paper Matte	Letter (8.5 × 11 inches)	S041062	100
	Legal (8.5 × 14 inches)	S041067	100
Epson Photo Quality Self-adhesive Sheets	A4 (8.3 × 11.7 inches)	S041106	10
Epson Iron-on Cool Peel Transfer Paper	Letter (8.5 × 11 inches)	S041153	10

Copying a Photo or Document

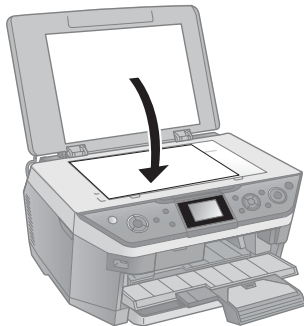
Follow the instructions in this section to position your originals correctly on the glass, and make color or black-and-white copies. To copy directly onto ink jet-printable CDs or DVDs, see the on-screen *User's Guide*.

Placing the Original on the Glass

1. Open the document cover and place your original face-down on the scanner glass, with the top against the back left corner.



2. Close the cover gently so you don't move the original.



Caution:

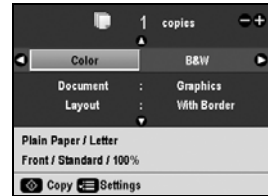
Do not place anything on top of the document cover or use it as a writing surface.

Copying a Document

You can copy documents using your all-in-one just like a copy machine.



1. Make sure you have letter- or A4-size plain paper loaded in the front paper cassette. For instructions, see page 6.
2. Place the document on the glass (see page 11) and close the cover.
3. Press the **Copy** mode button.
4. Press **+** or **-** to select the number of copies you want.
5. Press **◀** or **▶** to select **Color** or **B&W** (black-and-white) copies.
6. Press **▼**, then press **▶** to change the document type, if necessary.



Select **Graphics** for most documents. Select **Text** if your document has a colored background that you want to remove.

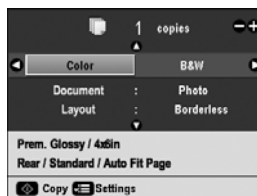
To copy at 100% size on letter-size plain paper in the front paper cassette, go to step 9.

7. To make double-sided copies or choose other special settings, select **Layout** and press **▶**.
8. To print on paper in the rear sheet feeder, or select other special settings, press **☰** **Menu**. Select your settings and press **OK**. (See the on-screen *User's Guide* for information about the various settings available.)
9. When you're ready to copy, press **◇** **Start**. If you need to cancel copying, press **⊙** **Stop/Clear Settings**. Do not pull out paper as it is printing; it ejects automatically.

Copying a Photo

You can make copies of your photos on 4 × 6-inch, 5 × 7-inch, 8 × 10-inch, letter-size, or A4-size photo paper using a variety of layouts.

1. Load Epson photo paper in the rear sheet feeder. See page 8 for instructions.
2. Place your photo on the glass (see page 11) and close the cover.
3. Press the **Copy** button.
4. Press **+** or **-** to select the number of copies you want.
5. Press **◀** or **▶** to select **Color** or **B&W**.
6. Press **▼**, then press **▶** to change the document type to **Photo**.



Note:

To copy a photo on plain paper in the front paper cassette, select **Graphics**.

To copy borderless photos on 4 × 6-inch Epson Premium Photo Paper Glossy or Semi-gloss paper loaded in the rear sheet feeder, go to step 9.

To change any of the settings, go to the next step.

7. Press **▼**, then press **▶** to change the layout, if necessary. See your on-screen *User's Guide* for details.
8. To copy on a different type of paper or change any of the other settings, press **☰ Menu**. Following is a list of the Paper Type settings:

Paper Type	Paper Type setting
Plain paper Epson Bright White Paper Epson Presentation Paper Matte	Plain Paper
Epson Premium Presentation Paper Matte	Matte
Epson Premium Photo Paper Glossy Epson Premium Photo Paper Semi-gloss Epson Ultra Premium Photo Paper Luster	Prem. Glossy
Epson Ultra Premium Photo Paper Glossy	Ultra Glossy
Epson Photo Paper Glossy	Photo Paper

Select your settings and press **OK**. For information about the various settings available, see your on-screen *User's Guide*.

9. When you're ready to copy, press **Start**. If you need to cancel copying, press **Stop/Clear Settings**.

Note:

Do not pull out paper as it is printing; it ejects automatically.

Editing Photos While You Copy

You can restore colors in faded photos, correct poorly exposed photos, reduce red-eye, and even crop while you copy photos.

1. Load Epson photo paper in the rear sheet feeder. See page 10 for a list of the papers and sizes available.
2. Press the **Specialty Print** button.
3. Press **Left** or **Right** to select **Reprint/Restore Photos** and press **OK**.
4. To turn on **Color Restoration**, press **Right**, select **On**, and press **OK**. (If your photo is not faded, leave this setting off.)
5. Place your photo on the glass (see page 11) and close the cover.



Note:

To copy multiple photos, place them 1/4-inch apart as described on the display screen.

6. Press **OK**. You see a preview of your photo and the settings that will be used for printing.

Note:

To see your photo without the settings displayed, press the **Display/Crop** button twice.

7. Press **+** or **-** to select the number of copies you want.
8. To copy borderless photos on 4 × 6-inch Epson Premium Photo Paper Glossy or Semi-gloss in the rear sheet feeder, go to step 10.



To auto-correct your photo, reduce red-eye, or select different paper settings, press \equiv **Menu**. (See page 13 for a list of paper types; you can't select **Plain Paper** when you're copying photos.)

- To correct a photo that is too light or too dark, press \blacktriangledown until **Enhance** is highlighted, then press \blacktriangleright to select **PhotoEnhance** and press **OK**. See page 16 for more information about automatic photo correction.
 - To reduce red-eye, press \blacktriangledown until **Reduce Red Eye** is highlighted, then press \blacktriangleright , select **On**, and press **OK**.
9. To crop your photos and enlarge the resulting image area to fit on your paper, press the **Display/Crop** button.

- To resize the image area, press **+** or **-**.
- To move the image area, press the arrow buttons.
- To check the zoomed image, press **OK**, then press **OK** again or press \curvearrowright **Back** to adjust the crop.



Press \blacktriangleright to preview the next photo and repeat step 9 to crop it, if necessary.

10. When you're ready to copy, press \diamond **Start**. If you need to cancel copying, press \odot **Stop/Clear Settings**.

Note:

Do not pull out paper as it is printing; it ejects automatically.

Printing From a Memory Card, Camera, or Other Device

The Epson Stylus Photo RX680 Series all-in-one lets you print photos from:

- Your digital camera's memory card (see below)
- A connected USB flash drive or other external storage device (see page 19)
- Your camera itself (see page 23)
- A Bluetooth device (see your on-screen *User's Guide*)

You can even scan an original document or photo and save it on your memory card or USB flash drive; see your *User's Guide* for instructions.

Printing From a Memory Card

You can print photos directly from your digital camera's memory card; just insert it into one of the memory card slots and you're ready to print.

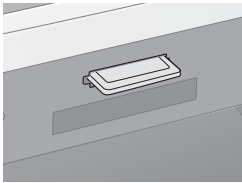
If your digital camera supports DPOF™ (Digital Print Order Format), you can pre-select the photos you want to print while the card is in the camera. Then you can insert the card in the RX680 Series and print them. See your on-screen *User's Guide* for more information.

For instructions on transferring files between your all-in-one and a computer, or printing photos directly on a CD or DVD, see the *User's Guide*.

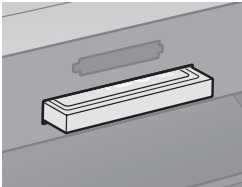
Your RX680 Series all-in-one automatically analyzes your photos, and, if necessary, adjusts the brightness, contrast, and saturation. Auto Photo Correction (also called PhotoEnhance™) is enabled by default and uses a sophisticated face recognition technology to optimize the skin tones in portraits. You can print photos that you would normally not print.

Compatible Cards and Image Formats

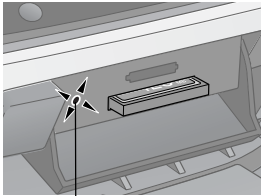
You can use the following cards with your RX680 Series:



Top slot



Bottom slot



Memory card access light

Slot	Type of card
Top slot	SD™ SDHC miniSD™* miniSDHC* microSD* microSDHC* MultiMediaCard Memory Stick™ Memory Stick Duo™* Memory Stick PRO™ Memory Stick Pro Duo™* Memory Stick Micro* MagicGate™ Memory Stick MagicGate Memory Stick Duo* xD-Picture Card xD-Picture Card Type H xD-Picture Card Type M
Bottom slot	CompactFlash® Microdrive™

* Adapter required

Your all-in-one supports image files that meet these requirements:

File format	JPEG with the Exif version 2.21 standard
Image size	80 × 80 pixels to 9200 × 9200 pixels
Number of files	Up to 999

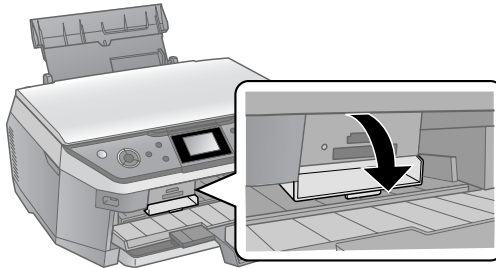
Inserting the Card

1. Make sure your RX680 Series is turned on.

Note:

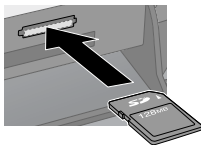
If you see a message on your computer screen when you insert a card, cancel the operation and close the message window.

2. Open the memory card door.

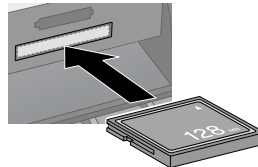


3. Insert your card into the correct slot (see page 17); it won't go in all the way. The memory card access light flashes, then stays on.

Top slot



Bottom slot



When you want to remove the card, make sure the memory card access light is not flashing, then pull the card straight out of its slot.

Caution:

Do not remove the card or turn off the RX680 Series while the memory card access light is flashing; you may lose data on the card.


Printing From a USB Flash Drive

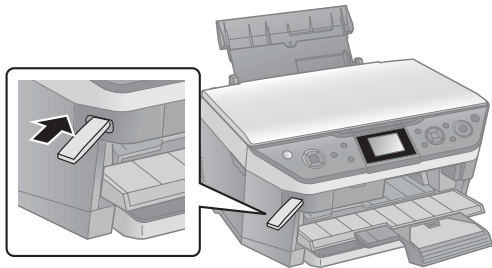
When your photos are saved on a USB flash drive, you can print directly from the drive.

1. Make sure the RX680 Series is turned on and there are no memory cards inserted in its memory card slots.

Note:

If a memory card is inserted, the RX580 Series will not recognize the external USB drive.

2. Plug the flash drive directly into the EXT.I/F  port on the front of the RX680 Series.



3. If there are folders on the flash drive, select the folder you want, and press OK.

You can select and print your photos from the flash drive the same as from a memory card. See the following sections for instructions.

Viewing and Selecting Photos

After you insert your memory card or USB flash drive as described above, you're ready to select and print your photos.

1. Load Epson photo paper in the rear sheet feeder. See page 8 for instructions.
2. Press the **Memory Card** mode button.
3. Press ◀ or ▶ to select **View and Print Photos**.

Note:

To print all the photos on your card, select **Print All Photos**. To select and print photos by date, select **Print by Date**. To print while viewing a slide show of your photos, select **Slide Show**. For details, see the on-screen *User's Guide*.



4. Press ◀ or ▶ to move through your photos.
5. To select a photo for printing, press +. Press + again if you want to print more than one copy.
6. To crop the photo, press the **Display/Crop** button and see page 15 for instructions.

Note:

To display your photo without information, or display 16 photos at a time, continue pressing the **Display/Crop** button.

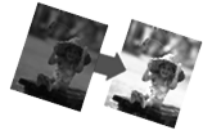
7. Press ◀ or ▶ to view other photos, select the number of copies, and crop, if desired.
8. To print borderless photos on 4 × 6-inch Epson Premium Photo Paper Glossy or Semi-gloss in the rear sheet feeder, go to step 10.

To change your paper type or any of the other print settings, press ≡ **Menu**. Select your settings and press **OK**. (See page 12 for a list of paper types; you can't select **Plain Paper**.)

9. Press **OK** to preview the photo(s) you have selected for printing.
10. Press ⬠ **Start** to start printing. If you need to cancel printing, press ⏹ **Stop/Clear Settings**.

Automatically Correcting Photos

Your RX680 Series automatically analyzes your photos, and, if necessary, adjusts the brightness, contrast, and saturation. Auto Photo Correction (also called PhotoEnhance) is enabled by default.



To preview the correction on the display screen:

1. Follow the instructions on page 20 to view your photos. You see **Preview Auto Correct** in the lower left corner of the screen.

If the words **Preview Auto Correct** are orange, Auto Photo Correction will significantly improve your photo. If the words are white, the correction will be more subtle.

2. Press ▼. After a moment, the corrected image appears.
3. Press ▼ again to return to the original view.

Note:

Auto Photo Correction (like other print settings) affects only your printed photos. It does not change your original image files. Print settings are applied to all photos until you turn off the settings. To return all settings to their defaults, press ⓧ **Stop/Clear Settings**, then press **OK**.

Printing Custom Photo Greeting Cards

You can create custom greeting cards using photos on your memory card or a USB flash drive, and add your own handwritten or printed text. First you select a photo, select settings for your cards, and print a greeting card template on plain paper (for either a 4 × 6-inch card or three cards on one letter-size sheet). Then you fill out the template, add your message, and print your cards.

Printing the Template

1. Load several sheets of letter-size, plain paper in the front paper cassette. (Use only letter-size paper to print the template.)
2. Insert your memory card (see page 160) or USB flash drive (see page 19).
3. Press the **Specialty Print** mode button.

4. Press ◀ or ▶ to select **Print Photo Greeting Card**.
5. Press **OK**.
6. Make sure **Select Photo** and **Print Template** is highlighted and press **OK**.
7. Press ◀ or ▶ to select the photo you want, then press **OK**.
8. Select the **Paper Type**, **Paper Size**, **Layout**, and **Frame** you want to use.
9. Press ⬠ **Start** to print the greeting card template.



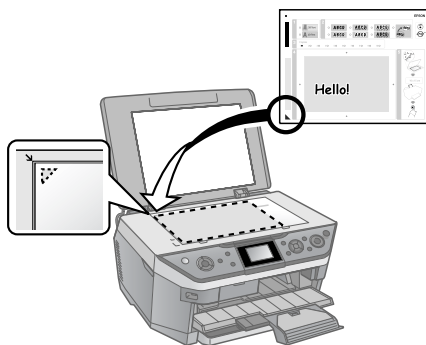
Printing the Cards

1. After the template prints, use a dark pen or pencil to fill in the circles to select your **Text Style**, **Text Effects** (if desired), and number of copies.
2. Add your greeting card message in the box next to your photo. You can write it in, print a message and paste it into the box, or draw a picture.

Tip:

When adding text, place it in the direction that your photo faces.

3. Open the document cover, place the template face-down on the glass with the top against the upper left corner, and close the cover.
4. Load Epson photo paper in the rear sheet feeder (either 4 × 6 or letter-size paper, depending on the template you selected).
5. Make sure the display screen shows **Print Greeting Cards from Template**.
6. Press **OK**, then press ⬠ **Start** to start scanning and printing. If you need to cancel printing, press ⏹ **Stop/Clear Settings**.



When you finish printing, cut the greeting cards apart if necessary.

Printing From a Digital Camera

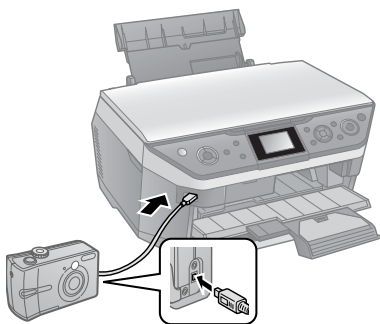
You can connect a digital camera to the RX680 Series and print your photos directly from the camera.

Check your camera manual to see if it supports PictBridge™ or USB DIRECT-PRINT™ printing. Also make sure your photos are in JPEG format and sized from 80 × 80 to 9200 × 9200 pixels.

Note:

Epson cannot guarantee the compatibility of any cameras. Some combinations of paper type, size, and layout may not be supported, depending on your camera and the Epson Stylus Photo RX680 Series settings.

1. Make sure the RX680 Series is turned on and there are no memory cards inserted in its memory card slots.
2. Connect the USB cable that came with your camera to the EXT. I/F port on the front of your RX680 Series.



3. Turn on your camera. You see a message on the display screen.
4. Load Epson photo paper. See page 6 for instruction.
5. Press the Setup button.
6. Press ◀ or ▶ to select PictBridge Setup, then press OK.
7. Select your settings and press OK. (See the on-screen *User's Guide* for detailed instructions.)
8. Follow the instructions that came with your camera to select your photos and print them.



Printing From Your Computer

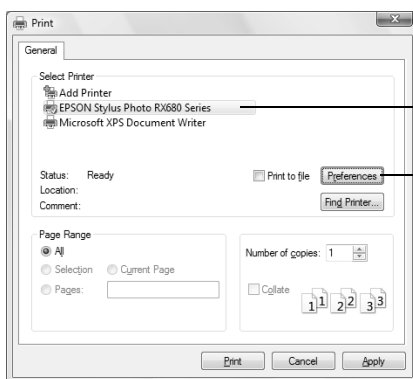
This section describes basic printing from your Windows or Macintosh computer. To install your software, see the *Start Here* sheet. For detailed instructions, see the on-screen *User's Guide*. You can also print on ink jet-printable CDs or DVDs using your printer software. See the on-screen *User's Guide* for details.

Tip:

It's a good idea to check for updates to your Epson Stylus Photo RX680 Series software. See "Checking for Software Updates" on page 37 for instructions.

Printing in Windows

1. Open a photo or document in a printing program, open the File menu, and select Print.



Select EPSON Stylus Photo RX680 Series

Click here to open your printer software

2. Select EPSON Stylus Photo RX680 Series and click the Preferences or Properties button.

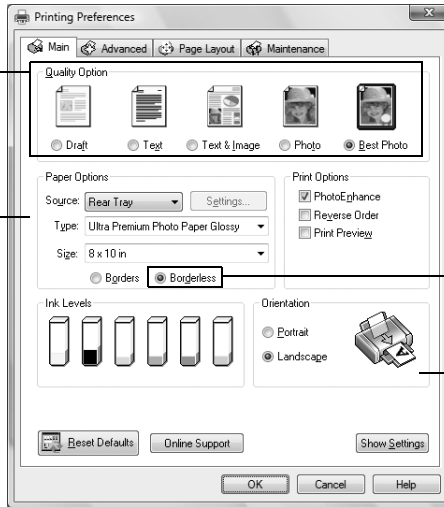
Note:

If you see a **Setup**, **Printer**, or **Options** button, click it. Then click **Preferences** or **Properties** on the next screen.

- On the Main tab, select the basic print settings. Make sure you choose the correct paper **Type** setting for your paper (see page 28).

Select the type of document you're printing (choose **Photo** or **Best Photo** for photos)

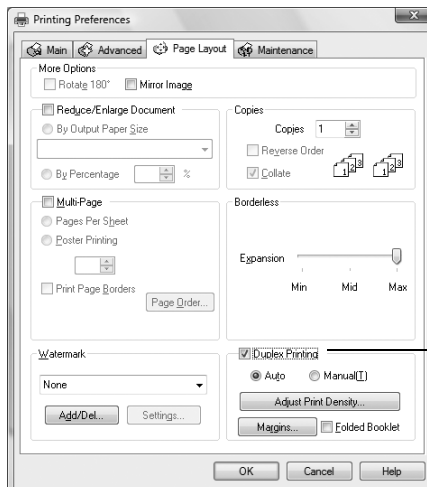
Select your paper **Source**, **Type**, and **Size**



Click here for borderless photos

Select your document or photo **Orientation**

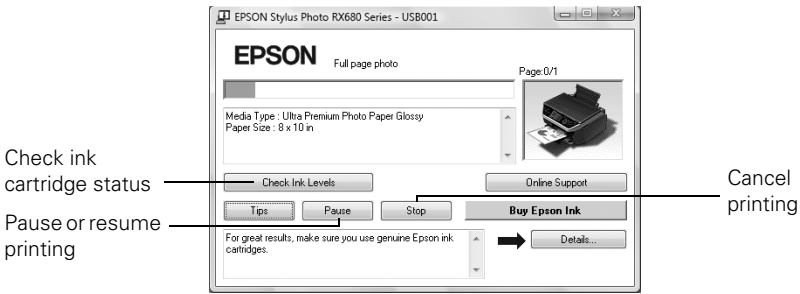
- Make sure you select the source for the paper you want to print on. To use the **Automatic Source** setting, you need to click **Settings** and configure the front paper cassette. See your on-screen *User's Guide* for more information.
- To print double-sided (on plain paper or Epson Bright White Paper), click the **Page Layout** tab, then click **Duplex Printing**.



Click **Duplex Printing**

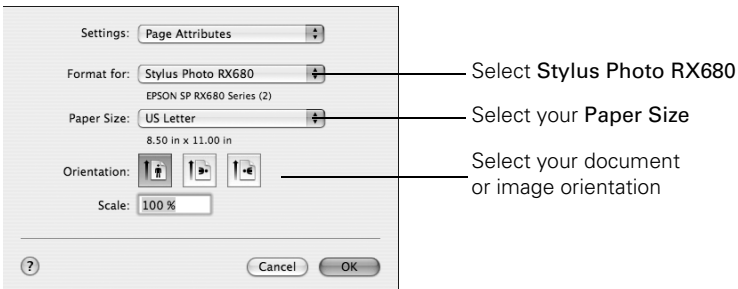
6. Select other layout settings as necessary.
7. For more printing options, click the **Advanced** tab.

Note:
For more information about print settings, click **Help** or see your on-screen *User's Guide*.
8. Click **OK** to save your settings.
9. Click **OK** or **Print** to start printing. This window appears and shows the progress of your print job.



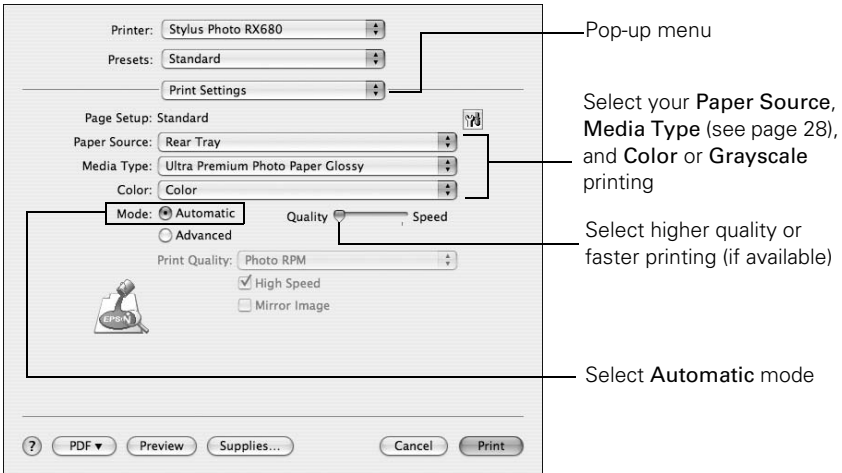
Printing With a Macintosh

1. Open a photo or document in a printing program, open the **File** menu, and select **Page Setup**.
2. Select the basic page settings. For borderless photos, choose a **Paper Size** setting with a **Sheet Feeder - Borderless** option.



3. Click **OK**.
4. Open the **File** menu and select **Print**.

5. Select **Stylus Photo RX680**, choose **Print Settings** from the pop-up menu, and select the following print settings:

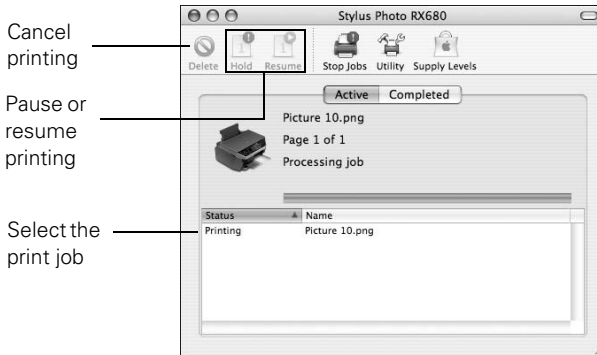


Note:

In certain programs, you may need to select **Advanced** before you can select **Print Settings**. For more information about printer settings, click the ? button.

6. Make sure you select the source for the paper you want to print on.
To use the **Automatic Paper Source** setting, you need to configure the front paper cassette in the Epson Printer Utility. Click and select **Printer and Option Information**.
7. To print double-sided (on plain paper or Epson Bright White Paper), select **Auto Duplex Printing Settings** from the pop-up menu and click **Auto Duplex Printing**. Select other settings as necessary.
8. Choose any other printing options you may need from the pop-up menu. See the on-screen *User's Guide* for details.
9. Click **Print**.

10. To monitor your print job, click the  printer icon in the dock (or click the  Print Center icon and double-click **SP RX680 Series** on the next screen).



Selecting the Correct Paper Type

Select the correct **Type** (see page 25) or **Media Type** (see page 27) setting in your printer software so the ink coverage can be adjusted accordingly.

For this paper/media	Select this setting
Plain paper Epson Bright White Paper Epson Presentation Paper Matte	Plain Paper/Bright White Paper
Epson Ultra Premium Photo Paper Glossy	Ultra Premium Photo Paper Glossy
Epson Premium Photo Paper Glossy	Premium Photo Paper Glossy
Epson Photo Paper Glossy	Photo Paper Glossy
Epson Premium Photo Paper Semi-gloss	Premium Photo Paper Semi-gloss
Epson Ultra Premium Photo Paper Luster	Ultra Premium Photo Paper Luster
Epson Premium Presentation Paper Matte Epson Premium Presentation Paper Matte Double-sided Epson Photo Quality Self-Adhesive Sheets Epson Iron-On Cool Peel Transfer Paper	Premium Presentation Paper Matte
Inkjet-printable CD or DVD	CD/DVD
	CD/DVD Premium Surface
Envelopes (use rear sheet feeder only)	Envelope

Scanning a Photo or Document

You can use your Epson Stylus Photo RX680 Series all-in-one to scan a photo or document and save it on your computer or other device.

You can even restore and correct photographs as you scan (see page 30).

The Epson Scan software provides three scanning modes:

- **Full Auto Mode** scans quickly and easily using automatic settings.
- **Home Mode** previews your image and provides preset options for scanning.
- **Professional Mode** previews your image and provides a full array of tools.

Note:

For detailed scanning instructions, or instructions on scanning a photo or document to a memory card or USB flash drive, see the on-screen *User's Guide*.

Basic Scanning

You can scan from any TWAIN-compliant application—such as ArcSoft PhotoImpression™—using Epson Scan. Or you can start Epson Scan directly from your computer and save your image to a file.

1. Open the document cover, place your original face-down on the glass (see page 11), and close the cover.
2. Do one of the following to start Epson Scan:
 - **Windows:** Double-click the EPSON Scan icon on your desktop.
 - **Macintosh:** Double-click EPSON Scan in the Applications folder.
 - Start a scanning application, open the File menu, choose **Import** or **Acquire**, and select EPSON Stylus Photo RX680 Series.

You see the Epson Scan standby window:

3. If the Mode is set to **Full Auto Mode**, click the **Scan** button.

If you are in Home or Professional Mode, you see a different Epson Scan window. (To change the mode, select it in the upper right corner.)

4. To restore color in a faded photo or make other corrections, click **Customize** and follow the instructions below.
5. Click **OK**. The image is scanned and you see its icon in Windows Explorer or Macintosh Finder.

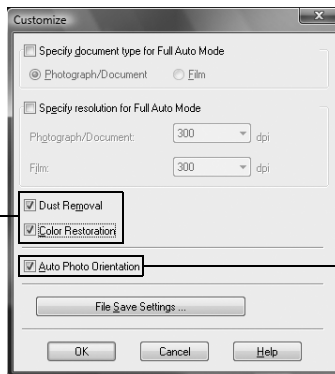


Restoring and Correcting Photos

You can automatically transform a faded, dusty, or badly exposed color photo into one with true-to-life color and sharpness as you scan. Use the **Color Restoration** and **Dust Removal** options in Epson Scan's Full Auto mode. In Home and Professional Mode, you can also select **Backlight Correction** to remove shadows from images with too much background light.

Full Auto Mode

Click the **Customize** button, click **Dust Removal** and/or **Color Restoration**, click **OK**, and click **Scan**.



Automatically orients your photos based on detected faces, sky, etc. If your photo is not oriented correctly, turn off **Auto Photo Orientation**.

Note:

For detailed instructions, see the on-screen *User's Guide*. You can also click **Help** on the Epson Scan screen for information about all the available settings.

Maintaining Your All-in-One

Follow the steps here to check and clean the print head, and replace ink cartridges. To align the print head, if necessary, see your on-screen *User's Guide*.

You can also perform these maintenance tasks through your RX680 Series software. See your on-screen *User's Guide* for instructions.

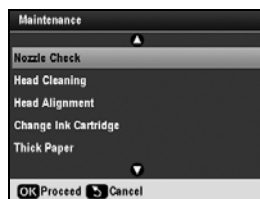
Note:

If you need to clean the document cover, use only a soft, non-abrasive microfiber-type cloth.

Checking the Print Head Nozzles

If your printouts are faint or have gaps in them, the print head nozzles may be clogged or ink may be running low in an ink cartridge. Follow these steps to check the print head nozzles:

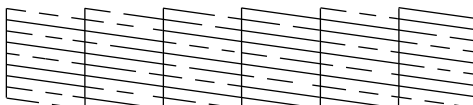
1. Load letter-size paper in the rear sheet feeder.
2. Press the **Setup** button.
3. Select **Maintenance** and press **OK**.
4. Select **Nozzle Check** and press **OK**.
5. Press **Start**.
6. Check the nozzle check pattern that prints to see if there are gaps in the lines.



Nozzles
are clean



Nozzles need
cleaning



7. If there are no gaps, press **OK** to continue printing.

If there are gaps or the pattern is faint, press **Start** to clean the print head.

Cleaning the Print Head

If print quality has declined and the nozzle check indicates clogged nozzles, you can clean the print head. Print head cleaning uses ink, so clean it only if necessary.

Note:

You cannot clean the print head if an ink cartridge is expended, and may not be able to clean it when a cartridge is low. You must replace the cartridge first (see page 35).

1. Load letter-size paper in the rear sheet feeder.
2. Press the **Setup** button.
3. Select **Maintenance** and press **OK**.
4. Select **Head Cleaning** and press **OK**.
5. Press **Start**.



Cleaning lasts around 1 minute. When it's finished, you see a message on the display screen.

Caution:

Never turn off the RX680 Series during a cleaning cycle or you may damage it.

6. Press **Start** to run a nozzle check and confirm that the print head is clean.

Note:

If you don't see any improvement after cleaning the print head three times, turn off your all-in-one and wait at least six hours to let any dried ink soften. Then try printing again.

If you do not use your all-in-one often, it is a good idea to print a few pages at least once a month to maintain good print quality.

Checking the Ink Cartridge Status

Your RX680 Series will let you know when an ink cartridge is low or expended by displaying a message on its display screen or your computer.

Note:

You cannot print or copy when an ink cartridge is expended even if the other cartridges are not expended. Replace any expended cartridges before printing or copying.

To check ink cartridge status from the display screen anytime, follow these steps:

1. Press the **Setup** button.
2. Select **Ink Levels** and press **OK**.

A cartridge marked with an exclamation point (!) is low on ink. See page 35 to replace the cartridge, if necessary.



A window may also appear on your computer screen if you print when ink is low. This window can optionally display ink offers and other updates retrieved from an Epson website. On a Windows computer that is connected to the Internet, you may see a screen asking if you want to receive these Epson offers the first time you try to print when ink is low. Click **Accept** or **Decline**.

Note:

To disable checking for ink offers or updates from Epson, see the instructions in your on-screen *User's Guide*.

Purchasing Epson Ink Cartridges

You can purchase genuine Epson ink and paper at Epson Supplies Central at www.epson.com/ink3 (U.S. sales) or www.epson.ca (Canadian sales). You can also purchase supplies from an Epson authorized reseller. To find the nearest one, call 800-GO-EPSON (800-463-7766). Use the following list when you order or purchase new ink cartridges:

Ink color	Part number
Black	78 or 77 (High Capacity)
Cyan	78 or 77 (High Capacity)
Light Cyan	78 or 77 (High Capacity)
Magenta	78 or 77 (High Capacity)
Light Magenta	78 or 77 (High Capacity)
Yellow	78 or 77 (High Capacity)

Note:

Try the High Capacity 77 cartridges available at <http://www.epson.com/highcapacity> (U.S. sales) or <http://www.epson.ca> (Canadian sales) or the 77 color multipack available at your local reseller.

You can use any combination of cartridge sizes. (If you've installed a 77 black cartridge, you can still use a 78 magenta cartridge, for example).

We recommend that you use genuine Epson cartridges and do not refill them. The use of other products may affect your print quality and could result in printer damage.

Yields vary considerably based on images printed, print settings, paper type, frequency of use, and temperature. For print quality, a small amount of ink remains in the cartridge after the "replace cartridge" indicator comes on. The printer ships with full cartridges, and part of the ink from the first cartridges is used for priming the printer.

For best printing results, use up a cartridge within six months of opening the package.

Store ink cartridges in a cool, dark place. If you bring them inside from out in the cold, allow them to warm up to room temperature for at least 3 hours before using them.

Replacing Ink Cartridges

Make sure you have a new ink cartridge before you begin. You must install new cartridges immediately after removing the old ones.

Caution:

Do not open ink cartridge packages until you are ready to install the ink. Cartridges are vacuum packed to maintain reliability.

Leave your old cartridges in the RX680 Series until you are ready to replace them to prevent the print head nozzles from drying out.

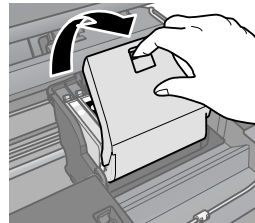
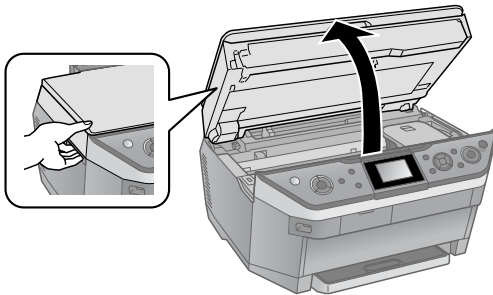
Remove the CD/DVD tray and return the CD/DVD guide to the stored position before replacing ink cartridges.

1. Turn on your RX680 Series.

If a cartridge is low or expended, you see a message on the display screen. Note which cartridges need to be replaced and press **OK**.

If you're replacing a cartridge before you see a message on the display screen, press **Setup**, select **Maintenance**, and press **OK**. Then select **Change Ink Cartridge** and press **OK**.

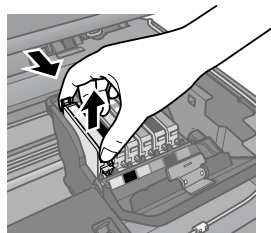
2. Open the scanner, then open the cartridge cover.



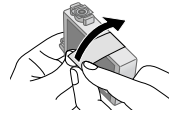
3. Squeeze the tab on the cartridge and lift it up. Dispose of it carefully. Do not take the used cartridge apart or try to refill it.

Warning:

If ink gets on your hands, wash them thoroughly with soap and water. If ink gets into your eyes, flush them immediately with water. Keep ink cartridges out of the reach of children.



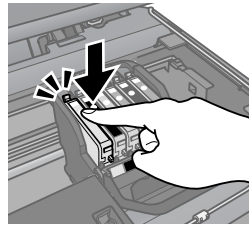
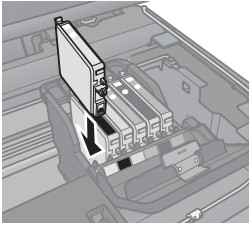
4. Remove the cartridge from the package, but be careful not to touch the green chip on the edge.
5. Remove the yellow tape from the bottom of the ink cartridge.



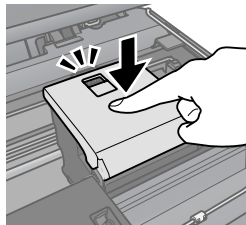
Caution:

Do not remove any other labels or seals, or ink will leak.

6. Insert the new ink cartridge into the holder and push it down until it clicks into place.



7. Once you replace all the cartridges that need replacing, close the cartridge cover and push it down until it clicks into place.



8. Close the scanner.
9. Press **OK** to begin charging the ink. This takes about 2 minutes. When you see a completion message on the display screen, ink charging is finished.

Caution:

To conserve ink, never turn off the RX680 Series while ink is charging. If you see an ink replacement message on the display screen, press **OK** and press down all the cartridges securely.


If you remove a low or expended ink cartridge, you cannot reinstall and use the cartridge.

Solving Problems

Check the messages on the display screen to diagnose the cause of most problems. You can also check the basic troubleshooting suggestions beginning on page 38 or check the on-screen *User's Guide* for more detailed help.

Checking for Software Updates

Periodically, it's a good idea to check Epson's support website for free updates to your Epson Stylus Photo RX680 Series software. Open your on-screen *User's Guide* and select **Download the Latest Software** or visit Epson's support website at epson.com/support (U.S.) or epson.ca (Canada).

With Windows, you can select **Driver Update** on the **Maintenance** tab in the printer settings window. You can also click **Start** or , select **Programs** or **All Programs**, select **EPSON**, and click **EPSON Stylus Photo RX680 Series Driver Update**. Also select **EPSON Scan** and click **EPSON Stylus Photo RX680 Series Scanner Driver Update**.

Display Screen Messages


Display screen message	Problem and solution
A printer error has occurred.	Turn the RX680 Series off, make sure no paper is jammed inside (see page 39), and turn it back on. If the error is not resolved, contact Epson for help (see page 41).
A scanner error has occurred.	Turn the RX680 Series off and then back on. If the error is not resolved, contact Epson for help (see page 41).
Waste ink pad in the printer is saturated.	Parts inside the RX680 Series are at the end of their service life. Contact Epson for help (see page 41).
Cannot recognize ink cartridges.	Press OK and make sure the cartridges are installed correctly (see page 35).
Data error. The document cannot be printed.	The RX680 Series cannot print from the connected camera or other device due to a problem with the device. Check your device for the problem.

Display screen message	Problem and solution
Data error. The document may not be printed correctly.	A photo you're printing from a connected camera or other device has a problem. Check your device and the photo you're trying to print.
Cannot recognize the memory card or disc.	The memory card is not inserted correctly (see page 18) or there is a problem with the card. Remove it and check the card.
Cannot recognize the device.	The memory card is not inserted correctly (see page 18), or another device is not connected correctly, or there is a problem with the card or media in the device. Remove the card or device and check it.
Cannot create a folder on the memory card or disc. Operation canceled.	Insert a new memory card (see page 18) or another storage medium (see the <i>User's Guide</i>) and try again.
The document is too complex to print with Bluetooth.	Check your Bluetooth device documentation.
Backup Error Error Code xxxxx	Backup was cancelled due to a backup problem. Note the error code and contact Epson for help (see page 41).
A problem occurred while formatting.	Try formatting or saving again. If the error recurs, there may be a problem with your memory card or storage medium. Check the card or other media and try again.
A problem occurred while saving.	
Print head cleaning failed.	Turn the RX680 Series off and back on and try cleaning the print head again. If the error recurs, contact Epson for help (see page 41).

Problems and Solutions

Check the solutions below if you're having trouble using your all-in-one.

Printing and Copying Problems

- If the Copy, Memory Card, and Specialty Print lights flash sequentially and the display screen goes dark, your RX680 Series is in sleep mode to save power. Press any button (except the  On button) to wake it up.
- Make sure your original is positioned against the upper left corner of the glass. If the edges are cropped, move your original away from the edges slightly.
- Make sure the correct paper source is selected (rear sheet feeder or front paper cassette) before you print.

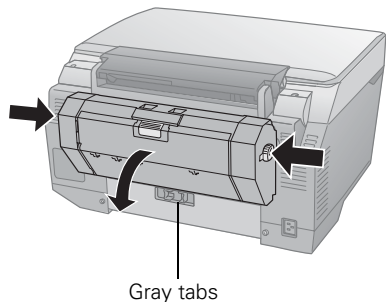
- Make sure your paper is loaded short edge first against the right side of the rear sheet feeder with the edge guide against it. Don't load paper above the arrow mark inside the guide.
- Make sure the paper size settings are correct for the paper you loaded.

Paper Feeding Problems

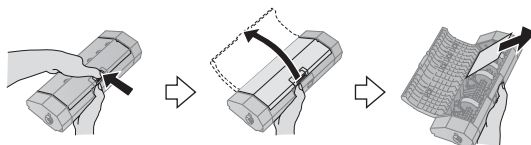
- If paper doesn't feed, remove it and flip through the stack to separate the sheets. Reload paper against the right side of the rear sheet feeder and slide the edge guide against it.
- Try loading fewer sheets in the rear sheet feeder or front paper cassette.

Paper Jam Problems

- If paper is jammed:
 1. Press **Start** to eject the jammed paper.
 2. If paper is still jammed, press the **On** button to turn off the all-in-one. Then open the scanner, remove the jammed paper and torn pieces, close the scanner, and turn the all-in-one back on.
- If paper is jammed in the front paper cassette:
 1. Press **Start** to eject the jammed paper.
 2. If paper is still jammed, press the **On** button to turn off the all-in-one.
 3. Close the output tray and remove the front paper cassette.
 4. Remove the jammed paper and torn pieces, insert the front paper cassette, and turn the all-in-one back on.
- If you see a message that paper is jammed in the back of the printer or auto duplexer:
 1. Press the buttons on the sides of the auto duplexer and remove it from the all-in-one.
 2. Press the gray tabs to open the lower rear cover.



3. If you see paper jammed in the lower rear area or in the auto duplexer, slowly pull it out.



- If you see a message that paper is jammed in the bottom of the all-in-one, see your on-screen *User's Guide* for instructions on clearing the jam.

Print Quality Problems

- Make sure the document is placed flat against the document table glass and the all-in-one is not tilted or placed on an uneven surface.
- In the rear sheet feeder, load the paper printable side face-up. In the front paper cassette, load paper with the printable side face-down.
- Make sure your paper isn't damp or curled.
- Use a support sheet with special paper or load your paper one sheet at a time. Remove sheets from the output tray so not too many collect at a time.
- Make sure the type of paper you loaded matches the paper size and type settings on the control panel (see page 13) and in your software (see page 28).
- For the best print quality, use Epson special paper (see page 10) and genuine Epson ink cartridges (see page 35).
- If you notice light or dark bands across your printouts or they are too faint, you may need to clean the print head to unclog the nozzles. Run a nozzle check (see page 31) to see if the print head needs cleaning.
- Clean the print head (see page 32).
- If you notice jagged vertical lines, you may need to align the print head. See the on-screen *User's Guide* for instructions.
- The ink cartridges may be low on ink (see page 35 for instructions on replacing an ink cartridge).
- If a dotted line appears in the image, clean the scanner glass with a soft, dry, lint-free cloth (paper towels are not recommended), or use a small amount of glass cleaner on a soft cloth. Do not spray glass cleaner directly on the glass.

Where To Get Help

Epson Technical Support

Epson provides these technical support services:

Internet Support

Visit Epson's support website at epson.com/support and select your product for solutions to common problems. You can download drivers and documentation, get FAQs and troubleshooting advice, or e-mail Epson with your questions.

Speak to a Support Representative

Before you call Epson for support, please have the following information ready:

- Product name (Epson Stylus Photo RX680 Series)
- Product serial number (located on the label in back)
- Proof of purchase (such as a store receipt) and date of purchase
- Computer configuration
- Description of the problem

Then call:

- U.S.: (562) 276-4382, 6 AM to 6 PM, Pacific Time, Monday through Friday
- Canada: (905) 709-3839, 6 AM to 6 PM, Pacific Time, Monday through Friday

Toll or long distance charges may apply.

Purchase Supplies and Accessories

You can purchase genuine Epson ink and paper at Epson Supplies Central at www.epson.com/ink3 (U.S. sales) or www.epson.ca (Canadian sales). You can also purchase supplies from an Epson authorized reseller. To find the nearest one, call 800-GO-EPSON (800-463-7766).

Other Software Technical Support

ArcSoft PhotoImpression: (510) 440-9901; www.arcsoft.com/support

Notices

Important Safety Instructions

Before using your all-in-one, read and follow these safety instructions:

- Be sure to follow all warnings and instructions marked on the RX680 Series.
- Use only the type of power source indicated on the RX680 Series label.
- Use only the power cord that comes with the RX680 Series. Use of another cord may cause fires or shock. Do not use the cord with any other equipment.
- Place the RX680 Series near a wall outlet where the plug can be easily unplugged.
- If you won't be using the RX680 Series for a long period, unplug the power cord from the electrical outlet.
- Always turn off the RX680 Series using the ⏻ On button, and wait until the ⏻ On light stops flashing before unplugging the printer or cutting off power to the electrical outlet.
- Avoid plugging the RX680 Series into an outlet on the same circuit as a photo copier or air control system that regularly switches on and off, or on an outlet controlled by a wall switch or timer.
- Do not let the power cord become damaged or frayed.
- If you use an extension cord with the RX680 Series, make sure the total ampere rating of the devices plugged into the extension cord does not exceed the cord's ampere rating. Also, make sure the total ampere rating of all devices plugged into the wall outlet does not exceed the wall outlet's ampere rating.
- Avoid locations that are subject to rapid changes in heat or humidity, shocks or vibrations, or dust.
- Leave enough room around the RX680 Series for sufficient ventilation. Do not block or cover openings in the RX680 Series case or insert objects through the slots.
- Do not place the RX680 Series near a radiator or heating vent or in direct sunlight.
- Place the RX680 Series on a flat, stable surface that extends beyond its base in all directions. It will not operate properly if it is tilted or at an angle.
- Make sure the RX680 Series is at least 4 inches (10 cm) away from the wall.
- Do not open the scanner section while copying, printing, or scanning.
- Do not touch the flat white cable inside the RX680 Series, and be careful not to trap your fingers when closing the scanner.

- Do not spill liquid on the RX680 Series.
- Use only a dry, soft cloth to clean the LCD screen. Do not use liquid or chemical cleansers.
- If the LCD screen is damaged, contact Epson. If the liquid crystal solution gets on your hands, wash them thoroughly with soap and water. If the liquid crystal solution gets into your eyes, flush them immediately with water. If discomfort or vision problems remain after a thorough flushing, see a doctor immediately.
- Except as specifically explained in your documentation, do not attempt to service the RX680 Series yourself.
- Unplug the RX680 Series and refer servicing to qualified service personnel under the following conditions: if the power cord or plug is damaged; if liquid has entered the product; if the product has been dropped or the case damaged; if the product does not operate normally or exhibits a distinct change in performance. Adjust only those controls that are covered by the operating instructions.
- When storing or transporting the RX680 Series, do not tilt it, stand it on its side, or turn it upside down; otherwise ink may leak from the cartridges.

Ink Cartridge Safety Instructions

- Keep ink cartridges out of the reach of children and do not drink the ink.
- Be careful when you handle used ink cartridges; there may be ink remaining around the ink supply port. If ink gets on your skin, wash it off with soap and water. If it gets in your eyes, flush them immediately with water.
- Do not put your hand inside the RX680 Series or touch any cartridges during printing.
- Install a new ink cartridge immediately after removing an expended one. Leaving cartridges uninstalled can dry out the print head and may prevent the RX680 Series from printing.
- If you remove an ink cartridge for later use, protect the ink supply area from dirt and dust and store it in the same environment as the RX680 Series. Note that there is a valve in the ink supply port, making covers or plugs unnecessary, but care is needed to prevent the ink from staining items that the cartridge touches. Do not touch the ink cartridge ink supply port or surrounding area. Do not store the cartridge upside down.

Display Screen Safety

- Use only a dry, soft cloth to clean the screen. Do not use liquid or chemical cleansers.
- If the screen is damaged, contact Epson. If the liquid crystal solution gets on your hands, wash them thoroughly with soap and water. If the solution gets into your eyes, flush them immediately with water. If discomfort or vision problems remain after a thorough flushing, see a doctor immediately.

Epson America, Inc., Limited Warranty

What Is Covered: Epson America, Inc. (“Epson”) warrants to the original retail purchaser that the Epson printer covered by this limited warranty statement, if purchased and operated only in the United States or Canada, will be free from defects in workmanship and materials for a period of one (1) year from the date of original purchase. For warranty service, you must provide proof of the date of original purchase.

What Epson Will Do To Correct Problems: Should your Epson printer prove defective during the warranty period, please call the Epson ConnectionSM at (562) 276-4382 (U.S.) or (905) 709-3839 (Canada) for warranty repair instructions and return authorization. An Epson service technician will provide telephone diagnostic service to determine whether the printer requires service. If service is needed, Epson will, at its option, exchange or repair the printer without charge for parts or labor. If Epson authorizes an exchange for the defective unit, Epson will ship a replacement printer to you, freight prepaid, so long as you use an address in Canada or the U.S. (excluding Puerto Rico and U.S. Possessions). Shipments to other locations will be made freight collect. You are responsible for securely packaging the defective unit and returning it to Epson within five (5) working days of receipt of the replacement. Epson requires a debit or a credit card number to secure the cost of the replacement printer in the event that you fail to return the defective one. If your printer is being repaired, Epson will direct you to send your printer to Epson or its authorized service center, where the printer will be fixed and sent back to you. You are responsible for packing the printer and for all costs to and from the Epson authorized service center. When warranty service involves the exchange of the printer or a part, the item replaced becomes Epson property. The replacement printer or part may be new or refurbished to the Epson standard of quality, and, at Epson’s option, may be another model of like kind and quality. Epson’s liability for replacement of the covered printer will not exceed the original retail selling price of the covered printer. Exchange products and parts assume the remaining warranty period of your original product covered by this limited warranty.

What This Warranty Does Not Cover: This warranty covers only normal use in the United States and Canada. Using this product for continuous production or similar high duty purposes is not considered normal use; damage, maintenance or service from such use will not be covered under this warranty. This warranty is not transferable. This warranty does not cover any color change or fading of prints or reimbursement of materials or services required for reprinting. This warranty does not cover damage to the Epson product caused by parts or supplies not manufactured, distributed or certified by Epson. This warranty does not cover ribbons, ink cartridges or third party parts, components, or peripheral devices added to the Epson product after its shipment from Epson, e.g., dealer or user-added boards or components. Epson is not responsible for warranty service should the Epson label or logo or the rating label or serial number be removed or should the product fail to be properly maintained or fail to function properly as a result of misuse,

abuse, improper installation, neglect, improper shipping, damage caused by disasters such as fire, flood, and lightning, improper electrical current, software problems, interaction with non-Epson products, or service other than by an Epson Authorized Servicer. If a claimed defect cannot be identified or reproduced, you will be held responsible for the costs incurred.

THE WARRANTY AND REMEDY PROVIDED ABOVE ARE EXCLUSIVE AND IN LIEU OF ALL OTHER EXPRESS OR IMPLIED WARRANTIES INCLUDING, BUT NOT LIMITED TO, THE IMPLIED WARRANTIES OF MERCHANTABILITY, NON-INFRINGEMENT OR FITNESS FOR A PARTICULAR PURPOSE. SOME LAWS DO NOT ALLOW THE EXCLUSION OF IMPLIED WARRANTIES. IF THESE LAWS APPLY, THEN ALL EXPRESS AND IMPLIED WARRANTIES ARE LIMITED TO THE WARRANTY PERIOD IDENTIFIED ABOVE. UNLESS STATED HEREIN, ANY STATEMENT OR REPRESENTATIONS MADE BY ANY OTHER PERSON OR FIRM ARE VOID. EXCEPT AS PROVIDED IN THIS WRITTEN WARRANTY, NEITHER EPSON AMERICA, INC. NOR ITS AFFILIATES SHALL BE LIABLE FOR ANY LOSS, INCONVENIENCE, OR DAMAGE, INCLUDING DIRECT, SPECIAL, INCIDENTAL OR CONSEQUENTIAL DAMAGES, RESULTING FROM THE USE OR INABILITY TO USE THE EPSON PRODUCT, WHETHER RESULTING FROM BREACH OF WARRANTY OR ANY OTHER LEGAL THEORY.

In Canada, warranties include both warranties and conditions.

Some jurisdictions do not allow limitations on how long an implied warranty lasts, and some jurisdictions do not allow the exclusion or limitation of incidental or consequential damages, so the above limitations and exclusions may not apply to you. This warranty gives you specific legal rights and you may have other rights which vary from jurisdiction to jurisdiction.

To find the Epson Authorized Reseller nearest you, visit our website at:
<http://www.epson.com>.

To find the Epson Customer Care Center nearest you, visit
<http://www.epson.com/support>.

You can also write to:
Epson America, Inc., P.O. Box 93012, Long Beach, CA 90809-3012

Declaration of Conformity

According to 47CFR, Part 2 and 15 for: Class B Personal Computers and Peripherals; and/or CPU Boards and Power Supplies used with Class B Personal Computers:

We: Epson America, Inc.
Located at: MS 3-13
3840 Kilroy Airport Way
Long Beach, CA 90806
Telephone: (562) 290-5254

Declare under sole responsibility that the product identified herein, complies with 47CFR Part 2 and 15 of the FCC rules as a Class B digital device. Each product marketed is identical to the representative unit tested and found to be compliant with the standards. Records maintained continue to reflect the equipment being produced can be expected to be within the variation accepted, due to quantity production and testing on a statistical basis as required by 47CFR §2.909. Operation is subject to the following two conditions: (1) this device may not cause harmful interference, and (2) this device must accept any interference received, including interference that may cause undesired operation.

Trade Name: Epson
Type of Product: Multifunction printer
Model: C342A

FCC Compliance Statement

For United States Users

This equipment has been tested and found to comply with the limits for a Class B digital device, pursuant to Part 15 of the FCC Rules. These limits are designed to provide reasonable protection against harmful interference in a residential installation. This equipment generates, uses, and can radiate radio frequency energy and, if not installed and used in accordance with the instructions, may cause harmful interference to radio or television reception. However, there is no guarantee that interference will not occur in a particular installation. If this equipment does cause interference to radio and television reception, which can be determined by turning the equipment off and on, the user is encouraged to try to correct the interference by one or more of the following measures:

- Reorient or relocate the receiving antenna.
- Increase the separation between the equipment and receiver.
- Connect the equipment into an outlet on a circuit different from that to which the receiver is connected.
- Consult the dealer or an experienced radio/TV technician for help.

WARNING

The connection of a non-shielded equipment interface cable to this equipment will invalidate the FCC Certification of this device and may cause interference levels which exceed the limits established by the FCC for this equipment. It is the responsibility of the user to obtain and use a shielded equipment interface cable with this device. If this equipment has more than one interface connector, do not leave cables connected to unused interfaces. Changes or modifications not expressly approved by the manufacturer could void the user's authority to operate the equipment.

For Canadian Users

This Class B digital apparatus complies with Canadian ICES-003.

Cet appareil numérique de la classe B est conforme à la norme NMB-003 du Canada.

Copyright Notice

All rights reserved. No part of this publication may be reproduced, stored in a retrieval system, or transmitted in any form or by any means, electronic, mechanical, photocopying, recording, or otherwise, without the prior written permission of Seiko Epson Corporation. The information contained herein is designed only for use with this Epson product. Epson is not responsible for any use of this information as applied to other equipment.

Neither Seiko Epson Corporation nor its affiliates shall be liable to the purchaser of this product or third parties for damages, losses, costs, or expenses incurred by purchaser or third parties as a result of: accident, misuse, or abuse of this product or unauthorized modifications, repairs, or alterations to this product, or (excluding the U.S.) failure to strictly comply with Seiko Epson Corporation's operating and maintenance instructions.

Seiko Epson Corporation shall not be liable for any damages or problems arising from the use of any options or any consumable products other than those designated as Original Epson Products or Epson Approved Products by Seiko Epson Corporation.

Responsible Use of Copyrighted Materials

Epson encourages each user to be responsible and respectful of the copyright laws when using any Epson product. While some countries' laws permit limited copying or reuse of copyrighted material in certain circumstances, those circumstances may not be as broad as some people assume. Contact your legal advisor for any questions regarding copyright law.

Trademarks

Epson and Epson Stylus are registered trademarks and Exceed Your Vision and USB DIRECT-PRINT are trademarks of Seiko Epson Corporation. PhotoEnhance is a trademark and Supplies Central and Epson Connection are service marks of Epson America, Inc.

General Notice: Other product names used herein are for identification purposes only and may be trademarks of their respective owners. Epson disclaims any and all rights in those marks.

© 2007 Epson America, Inc. 6/07

EPSON[®]
EXCEED YOUR VISION



41101690

CPD-23846
Printed in XXXXXX XX.XX-XX XXX