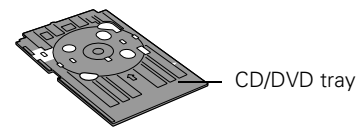
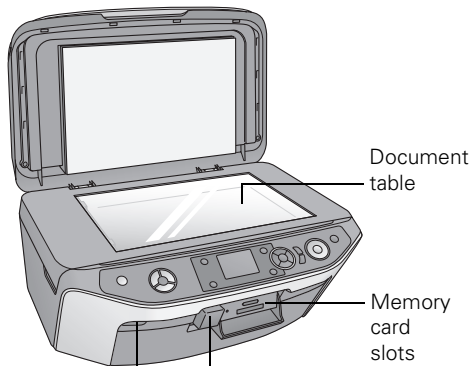
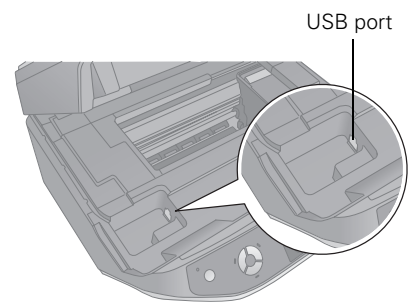
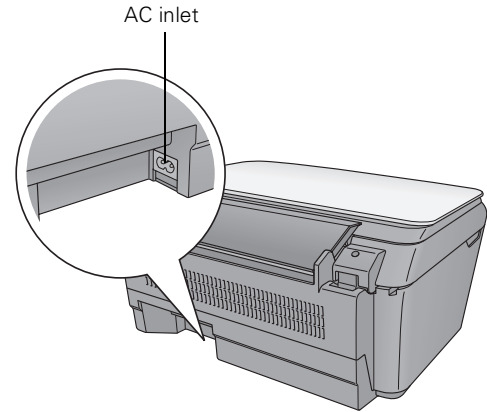
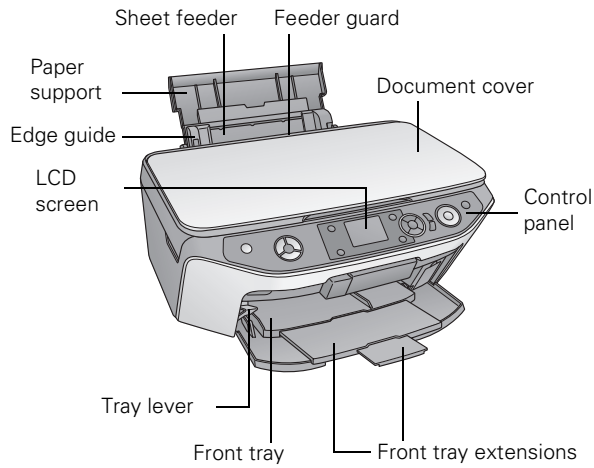
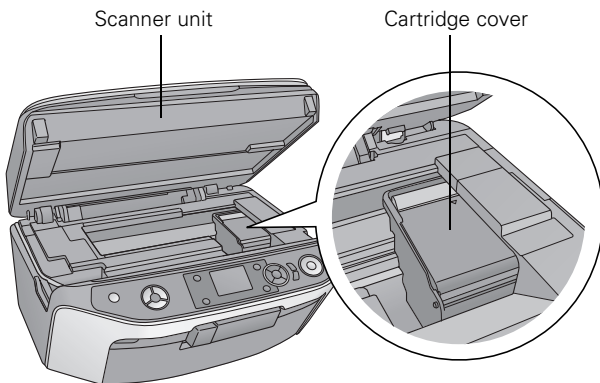


**Product Parts**



EXT. I/F USB port (for PictBridge® or USB storage devices)

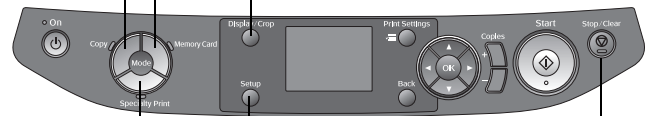
Infrared port



Copy a photo or document

View and print photos on memory card; scan to card; print an index sheet; print from an index sheet; play a slide show of photos on card

Display 1 or 9 photos; crop or zoom a photo



Stop printing or copying; cancel settings

Check ink status; replace ink cartridges; maintain the RX580; adjust CD/DVD print position; backup photos; restore default settings; make PictBridge® or Bluetooth® settings

Print on CD/DVDs; reprint or restore photos; print photo greeting cards

## Accessories

### Ink Cartridges

Cartridge	Part number
Black	78 (T078120)
Cyan	78 (T078220)
Magenta	78 (T078320)
Yellow	78 (T078420)
Light Cyan	78 (T078520)
Light Magenta	78 (T078620)
High-Capacity Black	77 (T077120)
High-Capacity Cyan	77 (T077220)
High-Capacity Magenta	77 (T077320)
High-Capacity Yellow	77 (T077420)
High-Capacity Light Cyan	77 (T077520)
High-Capacity Light Magenta	77 (T077620)

**Caution:** To ensure good results, use genuine Epson cartridges and do not refill them. Other products may cause damage to your RX580 not covered by Epson's warranties.

Don't use an ink cartridge beyond the expiration date on the package.

**Note:** Try the High-Capacity 77 cartridges available at <http://www.epson.com/highcapacity> (U.S. sales) or <http://www.epson.ca> (Canadian sales).

## Epson Media

Paper name*	Size	Part number
Epson Ultra Premium Photo Paper Glossy	Borderless 4 × 6 inches	S041934
	Letter (8.5 × 11 inches)	S041935
Epson Ultra Premium Glossy Photo Paper		
Epson Premium Photo Paper Glossy	Borderless 4 × 6 inches	S041808 S041727
	Borderless 5 × 7 inches	S041464
Epson Premium Glossy Photo Paper	Borderless 8 × 10 inches	S041465
	Letter (8.5 × 11 inches)	S041286 S041667
Epson Premium Photo Paper Semi-gloss	Borderless 4 × 6 inches	S041982
	Letter (8.5 × 11 inches)	S041331
Epson Premium Semigloss Photo Paper		
Epson Photo Paper Glossy	Borderless 4 × 6 inches	S041809
	Letter (8.5 × 11 inches)	S041141 S041649 S041271
Epson Glossy Photo Paper		
Epson Ultra Premium Photo Paper Luster	Letter (8.5 × 11 inches)	S041405
Epson Premium Luster Photo Paper		
Epson Bright White Paper	Letter (8.5 × 11 inches)	S041586
Epson Premium Bright White Paper		
Epson Premium Presentation Paper Matte	Borderless 8 × 10 inches	S041467
	Letter (8.5 × 11 inches)	S041257
Epson Matte Paper Heavyweight	Legal (8.5 × 14 inches)	S041067
Epson Premium Presentation Paper Matte Double-sided	Letter (8.5 × 11 inches)	S041568
Epson Double-sided Matte Paper		
Epson Presentation Paper Matte	Letter (8.5 × 11 inches)	S041062
Epson Photo Quality Ink Jet Paper		
Epson Iron-on Cool Peel Transfer paper	Letter (8.5 × 11 inches)	S041153
Epson Photo Quality Self Adhesive Sheets	A4 (8.3 × 11.7 inches)	S041106

\* Availability of paper types varies by location

## Product Specifications

### Printing

Printing method	On-demand ink jet
Ink Configuration	Six individual ink cartridges in black, cyan, magenta, yellow, light cyan, and light magenta

### Mechanical

Paper feed	Friction
Paper path	Sheet feeder, top entry CD/DVD tray, front entry
Sheet feeder capacity	About 120 sheets
Dimensions	
Storage	Width: 17.7 inches (450 mm) Depth: 16.3 inches (414 mm) Height: 8.3 inches (210 mm)
Printing	Width: 17.7 inches (450 mm) Depth: 21.0 inches (534 mm) Height: 11.1 inches (281 mm)
Weight	18.3 lb (8.3 kg) without ink cartridges

### Ink Cartridges

Colors	Black, cyan, magenta, yellow, light cyan light magenta
Cartridge life	Within 6 months after opening package, at 77 °F (25 °C)
Dimensions (W × D × H)	0.5 × 2.7 × 1.9 inches (12.7 × 68.0 × 47.0 mm)
Storage temperature	-4 to 104 °F (-20 to 40 °C) (installed) -22 to 104 °F (-30 to 40 °C) (packing storage) 1 month at 104 °F (40 °C)
Freezing temperature*	3.2 °F (-16 °C)

\* Ink thaws and is usable after approximately 3 hours at 77 °F (25 °C)

**Caution:** To ensure the best results, use genuine Epson cartridges and do not refill them. Other products may cause damage to your RX580 not covered by Epson's warranties. Don't use an ink cartridge beyond the expiration date on the package.

### Scanning

Scanner type	Flatbed color
Photoelectric device	CIS
Effective pixels	10,200 × 14,040 pixels at 1200 dpi
Document size	US letter size or A4 (8.5 × 11.7 inches)
Scanning resolution	1200 dpi (main scan) 2400 dpi (sub scan)
Output resolution	50 to 4800, 7200, and 9600 dpi (50 to 4800 dpi in 1 dpi increments)
Scanning speed	1200 dpi B/W: Approximately 10 msec per line 1200 dpi Color: Approximately 28 msec per line
Image data	16 bits per pixel per color internal 8 bits per pixel per color external (maximum)
Light source	RGB three color LED

### Electrical

<b>Rated Voltage</b>		100-120 V Model	220-240 V Model
<b>Input voltage range*</b>		AC 90 to 132 V	AC 198 to 264 V
<b>Rated frequency range</b>		50 to 60 Hz	
<b>Input frequency range</b>		49.5 to 60.5 Hz	
<b>Rated current</b>		0.6 A (max. 1.2 A)	0.3 A (max. 0.6 A)
<b>Power consumption</b>	ISO/IEC10561 Letter Pattern	Approx. 16 W	
	Low power mode	Approx 5.5 W	
	Sleep mode	Approx. 2.5 W	Approx. 2.7 W
	Power off mode	Approx. 0.2 W	Approx. 0.3 W

\* Check the label on the back of the RX580 for its voltage.

### Environmental

Temperature	
Operation	50 to 95 °F (10 to 35 °C)
Storage	-4 to 104 °F (-20 to 40 °C) 1 month at 104 °F (40 °C)

# Epson Stylus Photo RX580

Humidity (without condensation)

Operation 20 to 80% RH

Storage 5 to 85% RH

## Interfaces

USB 2.0 Hi-Speed (Device Class for computers), based on Universal Serial Bus Specifications Revision 2.0; 480Mbps

USB 2.0 Hi-Speed (Mass Storage Class for external storage devices)

Bluetooth® Ver. 2.0+EDR (option)

IrDA Ver. 1.3

## Safety Approvals

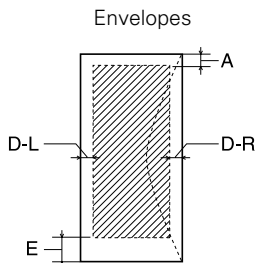
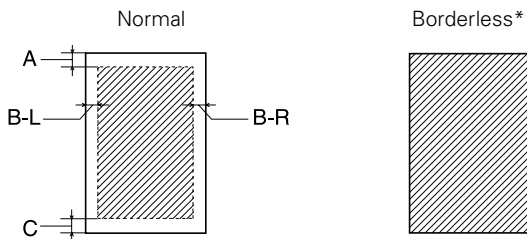
Safety standards UL 60950-1  
CAN/CSA-22.2 No.60950-1

EMC FCC part 15 Subpart B class B  
CAN/CSA-CEI/IEC CISPR 22 Class B

## Paper

Paper	Type	Specifications
Single sheets	Plain bond paper or special paper distributed by Epson	Thickness: 0.003 to 0.004 inch (0.08 to 0.11 mm) for plain bond paper Weight: 17 lb to 24 lb (64 g/m <sup>2</sup> to 90 g/m <sup>2</sup> ) for plain bond paper
Envelopes	Plain bond paper	Weight: 20 lb to 24 lb (75 g/m <sup>2</sup> to 90 g/m <sup>2</sup> )

## Printable area



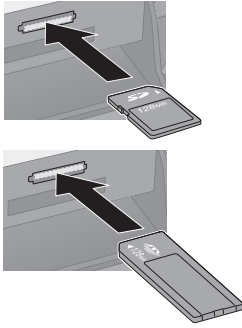
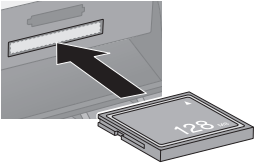
A	The minimum top margin is 0.12 inch (3.0 mm).
B-L	The minimum left margin is 0.12 inch (3.0 mm).
B-R	The minimum right margin is 0.12 inch (3.0 mm).
C	The minimum bottom margin is 0.12 inch (3.0 mm).
D-L	The minimum left margin is 0.20 inch (5.0 mm).
D-R	The minimum right margin is 0.20 inch (5.0 mm).
E	The minimum bottom margin is 0.79 inch (20.0 mm).

\* When you print with the borderless feature, print quality may decline in the expanded area. Before printing large jobs using the borderless setting, print a single sheet to confirm printout quality.

**Note:** Always load paper into the sheet feeder with the short edge first. Load envelopes flap edge left with the flap side down.

## Memory Cards

Compatible memory cards:

Slot	Type of Card
Top slot 	xD-Picture Card™ xD Picture Card Type M xD-Picture Card Type H MagicGate™ Memory Stick MagicGate Memory Stick Duo* Memory Stick™ Memory Stick Duo™* Memory Stick PRO™ Memory Stick PRO Duo™* MultiMediaCard SD™ Memory Card SDHC Memory Card miniSD™ card* miniSDHC card* microSD card* microSDHC card*
Bottom slot 	CompactFlash® Microdrive™

\* User-supplied adapter required

Memory card slots:

CF Type II card slot	Compatible with CF+ and CompactFlash Specification 3.0 cards
Memory Stick/Memory Stick PRO card slot	Compatible with Memory Stick Standard version 1.42-00 or Memory Stick Standard Memory Stick PRO Format Specifications version 1.02-00 cards
SD/MMC card slot	Compatible with SD Memory Card Specifications / PART1. Physical Layer Specification Version 2.0 cards and MultiMediaCard Standard Version 4.1 cards
xD-Picture card Slot	Compatible with xD-Picture card, Card Specification Version 1.20 Type M and Type H cards
Voltage requirements	3.3 v Maximum current is 500mA

Memory card image file requirements:

<b>Media format</b>	Compliant with DCF version 1.0 or 2.0
<b>File format</b>	JPEG or TIFF, DOS FAT (FAT 12 or 16, one partition) taken with a DCF version 1.0 or 2.0 compliant digital camera Supports Exif version 2.21
<b>Image size</b>	80 × 80 pixels to 9200 × 9200 pixels
<b>Number of files</b>	Up to 999

**Paper Loading Guidelines**

You can load up to 120 sheets of plain paper. You can load the following number of sheets of Epson special media:

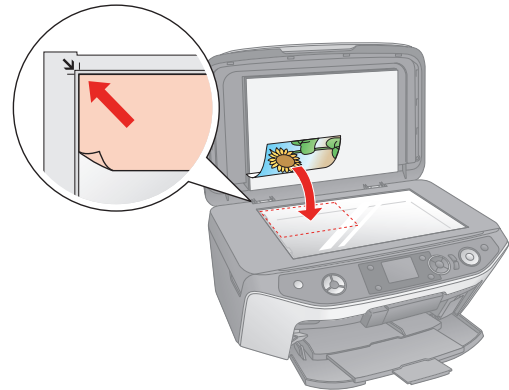
Paper type	Loading capacity
Epson Presentation Paper Matte Epson Photo Quality Ink Jet Paper	100 sheets
Epson Bright White Paper Epson Premium Bright White Paper	80 sheets
Epson Ultra Premium Photo Paper Glossy Epson Ultra Premium Glossy Photo Paper Epson Premium Photo Paper Glossy Epson Premium Glossy Photo Paper Epson Premium Photo Paper Semi-gloss Epson Premium Semigloss Photo Paper Epson Photo Paper Glossy Epson Glossy Photo Paper Epson Premium Presentation Paper Matte Epson Matte Paper Heavyweight Epson Premium Presentation Paper Matte Double-sided Epson Double-sided Matte Paper Epson Ultra Premium Photo Paper Luster Epson Premium Luster Photo Paper	20 sheets
Epson Iron-on Cool Peel Transfer paper Epson Photo Quality Self Adhesive Sheets	One sheet

- ❑ Don't load paper above the arrow mark on the left edge guide. Make sure the paper is under the tabs on the left and right edge guides.
- ❑ Load the printable side face-up. It's often brighter or whiter than the other side.
- ❑ Always load the short edge first, even when printing in landscape mode.
- ❑ Load letterhead or preprinted paper into the RX580 top edge first.
- ❑ If you experience paper feeding problems, try loading fewer sheets.
- ❑ If you're using special paper, follow the instructions that came with it.

**Copying Without a Computer**

**Placing the Original on the Glass**

1. Open the document cover and place your original face-down on the glass, in the upper left corner.



2. Close the document cover gently so that your original doesn't move.

**Caution:** Never open the document cover beyond where it stops and do not place heavy objects on top of the RX580.

If you need to press the document flat while you copy it, do not press too hard and be careful not to move it.

**Note:** If you need to copy a thick or large document, you can remove the document cover. Just open it and pull it straight up. When you are done, replace the document cover by inserting the tabs back into the slots.

## Copying Documents

You can copy documents in color or black and white, using plain paper or a variety of Epson papers for special projects.

1. Make sure the RX580 is turned on.
2. Place your document on the glass as described on page 5. Be sure to close the document cover.
3. Load up to 120 sheets of plain paper or 20 sheets of specialty paper.
4. Press the Copy mode button.
5. Press ◀ or ▶ to choose Color or B&W.
6. If you want more than one copy, press the Copies + button to select the number you want.
7. If you want to resize your copy, print on special paper, or adjust other settings, see “Selecting Copy Settings” on the right.
8. Press the ⬠ Start button to start copying.

If you need to cancel copying, press the ⏹ Stop/Clear Settings button. Do not pull out paper that is being printed; it will be ejected automatically to the front tray.

**Note:** The copies may not be exactly the same size as the original.

## Copying Photos

You can copy a photograph on 4 × 6, 5 × 7, 8 × 10, or 8.5 × 11-inch paper. You can easily resize your photo to fit on any size paper you want to use. The easiest way to copy photos (using default settings) is using 4 × 6 Epson Premium Photo Paper Glossy.

See page 2 for a list of special Epson papers for photos and creative projects.

1. Place your photo on the glass as described on page 5. Be sure to close the document cover.
2. Load your photo paper.
3. Press the Copy mode button.
4. Press ◀ or ▶ to choose Color or B&W.
5. If you want more than one copy, press the Copies + button to select the number you want.
6. Press ▼, then press ▶, select Photo, and press OK.
  - ❑ These settings are automatically selected when you copy photos: Borderless prints, automatically sized to fit on 4 × 6-inch Premium Photo Paper Glossy.
  - ❑ If you want to copy using a special layout, such as white borders or multiple photos on one sheet, press ▼, then press ▶ and select your layout. See “Layout Settings for Copying” on the right for more information.

- ❑ If you want to copy on a different size or type of paper, or select other special settings, press the ≡ Print Settings button. See “Print Settings for Copying” on page 7 for more information.

- ❑ The RX580 remembers your settings, even after you turn it off.

7. Adjust any settings as necessary, then press OK.

8. Press the ⬠ Start button to start copying.

**Note:** If you want to restore the color in faded photos, see “Reprinting Photos and Restoring Color” on page 7.

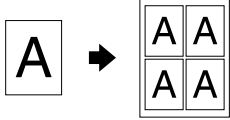
## Selecting Copy Settings

You can select special settings for copying on various sizes and types of paper, reducing or enlarging your original, or other types of copies. The settings you select will be saved, even after you turn off the RX580.

### Layout Settings for Copying

1. Press the Copy mode button.
2. Press ▼ to select Layout, then press ▶.
3. Press ▲ or ▼ to select one of the following layout settings, then press OK.

Layout Setting for Copying	Result
<b>Border</b> Copies your original with a standard 3-mm margin.	
<b>Borderless</b> Copies your photo all the way to the edges of the paper (on Epson photo papers only). Your image is slightly expanded and cropped to fill the page.	
<b>CD/DVD Copy</b> Copies onto a CD or DVD. See your printed <i>Basics Guide</i> for more information.	
<b>Wallet Copy</b> Makes wallet-sized copies of your original; 9 copies on letter-sized paper or as many will fit on smaller sheets.	
<b>2-up Copy</b> Copies two letter-size originals onto one sheet. After the first original is scanned, you place the second one on the glass. Then both originals are copied on one sheet of paper.	

Layout Setting for Copying	Result
<b>Repeat Copy</b> Prints a photo at actual size as many times as it will fit on one sheet.	
<b>Repeat-4</b> Prints a photo four times on one sheet.	

### Print Settings for Copying

You can choose from various sizes and types of Epson paper and other settings to get just the results you want.

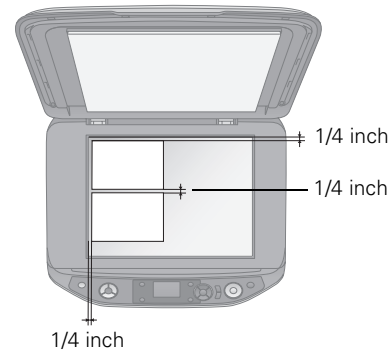
1. Press the **Copy** mode button.
2. Press the **Print Settings** button.
3. Press **▲** or **▼** to select a menu item, then press the **▶** button.
4. Press **▲** or **▼** to select one of the following print settings, then press **OK**.
  - Zoom:** Select **Actual** to print your photo at its original size. You can reduce or enlarge your original by a specific percentage using the **Copies +** or **-** buttons. Or select **Auto Fit Page** for borderless printing and resizing the image to fit standard paper sizes.
  - Paper Type:** Select the type of paper you loaded. See “Selecting the Paper Type Setting When You Print or Copy Without a Computer” on page 8 for a list of Epson papers and the corresponding Paper Types.
  - Paper Size:** Select the paper size you loaded.
  - Quality:** Select **Draft**, **Standard** or **Best**.
  - Copy Density:** Make your copies darker or lighter.
  - Expansion:** When you print borderless photos, your image is slightly expanded and cropped to fill the sheet of paper. If too much of your photo edges are cut off, select **Mid** or **Min**. If you see a white edge on your photo, leave it set on **Standard**.

## Reprinting Photos and Restoring Color

If you have faded photos (up to 5 × 7 inches), you can bring them back to life using the Color Restoration feature.

For photos that are not faded, you can follow the same steps to crop and resize your pictures or even change a color photo to black and white.

1. Place one or two photos on the scanner glass in the direction shown, making sure they are at least 1/4 inch apart and 1/4 inch from the edges of the glass.



2. Load your photo paper.
3. Press the **Specialty Print** button.
4. Press **◀** or **▶** to highlight **Reprint/Restore Photos**, then press **OK**.
5. Press **▶**, use the **▲** or **▼** buttons to set **Restoration On**, then press **OK**. (If you want to reprint photos that don't need color restoration, choose **Off**).
6. Press **OK** again. When you see a message about the placement of your photos, press **OK**.  
The photo(s) are scanned and restored. You see a preview on the LCD screen.
7. If you want to crop your photo, press the **Display/Crop** button and adjust the size and position of the yellow box.
8. If you're copying two photos, press **▶** to preview the second photo. Repeat step 7 if you want to crop the second photo.
9. Press the **Print Settings** button.

10. Press ▲ or ▼ to choose from the settings listed below, then press ►. Press OK when you are done.

- Paper Type:** choose Prem. Glossy, Ultra Glossy, Photo Paper, or Matte, depending on the type of paper you're using.
- Paper Size:** choose the size of the paper you loaded.
- Layout:** choose Border or Borderless.
- Quality:** this setting can't be changed from Standard when you are reprinting or restoring photos.
- Color Effect:** choose Off (to print in color) or B&W (to print in black and white).
- Expansion:** When you print borderless photos, your image is slightly expanded and cropped to fill the sheet of paper. If too much of your photo edges are cut off, select Mid or Min.

11. Press the ◊ Start button to print your photo or photos.

**Note:** If you need to cancel printing, press the Ⓞ Stop/Clear Settings button.

## Selecting the Paper Type Setting When You Print or Copy Without a Computer

For this paper	Select this setting
Epson Premium Photo Paper Glossy Epson Premium Glossy Photo Paper	PremGlossy
Epson Ultra Premium Photo Paper Glossy Epson Ultra Premium Glossy Photo Paper	UltraGlossy
Epson Photo Paper Glossy Epson Glossy Photo Paper	Photo Paper
Plain paper Epson Bright White Paper Epson Premium Bright White Paper Epson Iron-on Cool Peel Transfer Paper	Plain Paper
Epson Premium Presentation Paper Matte Epson Matte Paper Heavyweight Epson Premium Presentation Paper Matte Double-sided Epson Double-sided Matte Paper Epson Presentation Paper Matte Epson Photo Quality Ink Jet Paper Epson Photo Quality Self Adhesive Sheets	Matte

## Printing CDs and DVDs

Your RX580 includes a special tray that lets you print customized text, graphics, and photos directly on any ink jet-printable CD or DVD.

When you use your computer, the Epson Print CD software makes it easy to import your own photos, add text, and modify your designs with a variety of special effects. You can print on both regular 12-cm and 8-cm CDs and DVDs. See your on-screen *User's Guide* for more information.

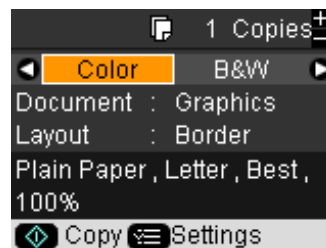
You can also print photos and designs without using a computer. You can either scan a photo (or other printed image) and copy it onto the CD or DVD, or you can use photos from your camera's memory card. See your printed *Basics Guide* for more information.

**Caution:** Use only ink jet-printable CDs and DVDs for printing. Thermal-printable and regular CDs and DVDs should not be used with your RX580; otherwise the ink may smear.

## Cleaning the Rollers

Before you print on CDs or DVDs, you should clean the rollers inside the RX580. You can do this by feeding and ejecting several sheets of plain paper.

1. Make sure your RX580 is turned on and several sheets of letter-size plain paper are loaded.
2. Make sure there are no documents on the document table.
3. Press the Copy button. You see the following LCD screen:



**Note:** If you don't use your RX580 for several minutes, the LCD screen turns off to save energy. If this happens, you may have to press the Copy button twice to see the screen above.

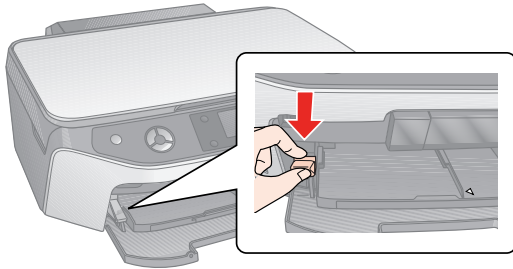
4. Press the Ⓞ Stop/Clear Settings button.
5. Press the Copies + button four times. The LCD screen should indicate five copies.
6. Press the ◊ button.



## Inserting a CD or DVD

**Caution:** Make sure the data, music, or video is burned on your CD or DVD before you print. Otherwise, dirt or scratches on the surface may cause errors when you burn the data.

1. Turn your RX580 on.
2. Open the front cover, then set the front tray to the CD/DVD position by pushing the tray lever down.



**Caution:** Before you move the tray lever, make sure no paper or other objects are on the front tray and the front tray is not extended.

If you've just turned the RX580 on, make sure the green **On** light has stopped flashing before you move the tray lever.

Do not touch the front tray when you move the tray lever.

Do not move the tray lever while the RX580 is printing.

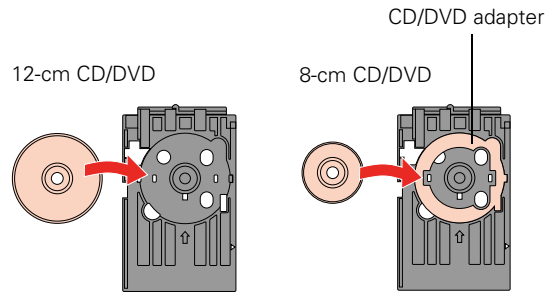
3. Place the CD or DVD on the CD/DVD tray with the white or printable side face-up. Make sure the disc lies flat in the tray.

**Note:** Use one CD/DVD at a time.

**Caution:** Before you position the CD or DVD, make sure that no foreign particles or substances are on the CD/DVD tray, as these may damage the disc's data side.

To print on a small CD or DVD (8-cm), place the small CD/DVD adapter on the tray first, then place the CD or DVD inside the adapter. Make sure the tabs on the edge of the adapter fit squarely into the molding of the tray.

**Caution:** Make sure you always use the small CD/DVD adapter when you print on 8-cm CDs or DVDs and that the CD or DVD and adapter lie flat on the tray; otherwise the RX580 may be damaged.

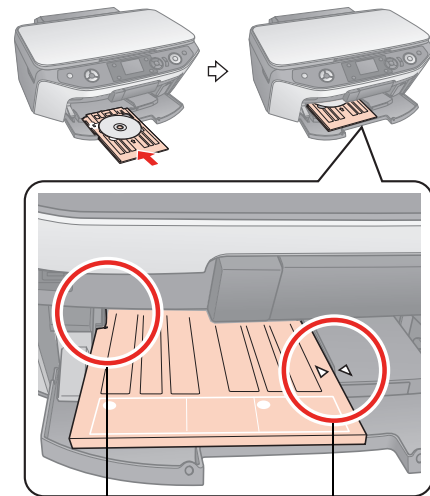


4. Gently insert the CD/DVD tray along the base of the front tray until the arrow marks on the CD/DVD tray and the front tray match each other.

**Caution:** Make sure both sides of the CD/DVD tray slide underneath the tabs on the front tray.

Be sure to insert the CD/DVD tray while the power is on. Otherwise, automatic print position adjustment may not take place after inserting the CD/DVD tray.

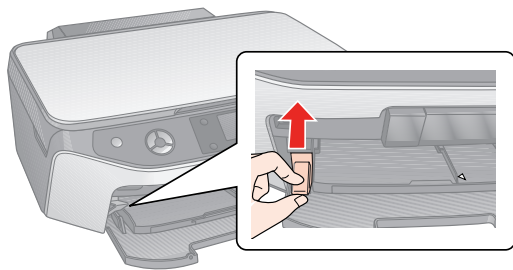
Do not insert the CD/DVD tray while the RX580 is printing; otherwise, your RX580 may be damaged or the surface of the CD or DVD may become dirty or scratched.



Make sure the CD/DVD tray slides under the tab (on both sides)

Make sure the arrow marks match

After you finish printing on a CD/DVD, remove the CD/DVD tray and set the front tray to the paper position by pushing up the tray lever.



### Printing Photos from Your Camera's Memory Card

The RX580 lets you print color photos directly from your digital camera's memory card; just insert it into one of the memory card slots on the RX580 and you're ready to print.

The color and lighting in your images are automatically corrected. You can also crop your photos, manually adjust the brightness and contrast, and correct red eyes—all without using your computer! See your printed *Basics Guide* for more information.

You can use the cards and image file types shown in "Memory Cards" beginning on page 4.

### Inserting the Card

1. Make sure the RX580 is turned on.
2. Open the memory card slot cover.

**Caution:** If your card requires an adapter, make sure you insert it into the adapter before you insert it in the slot. Otherwise, the card may get stuck in the slot. Do not insert more than one card at a time, and do not force the card into the slot.

3. Make sure the memory card access light is off and that no cards are in any of the slots, then insert your card into the correct slot. See page 4 for details.

The memory card access light flashes and then stays on.

4. Close the memory card slot cover.

When you want to remove the card, make sure the memory card access light is not flashing, then pull the card straight out of its slot.

**Caution:** Do not remove the card or turn off the RX580 while the memory card access light is flashing; you may lose photos on the card.

If your RX580 is connected to a computer running Windows 2000 or XP, never turn off the RX580 or disconnect the USB cable when a memory card is inserted; you may lose photos on the card.

On a Macintosh, always drag the memory card icon on the desktop into the trash to eject the card before you turn off the RX580 or unplug the USB cable. Otherwise, you may lose photos on the card.

### Printing Photos

The View and Print option lets you preview and choose individual photos to print.

1. Insert your memory card as described on the left.
2. Press the **Memory Card** mode button.
3. Press ◀ or ▶ to select **View and Print**, then press **OK**.
4. Press ◀ or ▶ to choose the photo you want to print.
5. When you see a photo you want to print, press the **Copies +** button.

If you want more than one copy, press the **Copies +** button again.

6. Repeat steps 4 and 5 for each additional photo you want to print.
7. Press the ≡ **Print Settings** button.
8. Press ▶ to choose **Paper Type**.
9. Press ▲ or ▼ to select the setting that matches the type of paper you loaded, then press **OK**.
10. Press ▼ to highlight **Paper Size**, then press ▶ to display a list of sizes. Press ▲ or ▼ to choose your paper size, then press **OK**.
11. Press ▼ to highlight **Layout**, then press ▶ to display a list of layouts. Press ▲ or ▼ to choose your layout option, then press **OK**. See your printed *Basics Guide* for more information.
12. Press ▼ or ▲ to highlight other settings in the **Print Settings** list, then press ▶ to display the list of options. See your printed *Basics Guide* for more information.
13. Press **OK** to confirm your print settings and selections.
14. Make sure you have paper loaded, then press the ◊ **Start** button to print your photos.

**Note:** If you need to cancel printing, press the ⊞ **Stop/Clear Settings** button.

To select photos for printing, you can also view multiple photos at once on the LCD screen, print an index sheet, or use your camera's DPOF function (if supported by your camera). See your printed *Basics Guide* for more information.

You can also print all of the photos on your memory card at once or print all of the photos taken on specific dates. See your printed *Basics Guide* for more information.

## Printing From Other Devices

You can print photos by directly connecting a PictBridge- or USB DIRECT-PRINT™-compatible digital camera or mobile phone, or a data storage device such as a USB flash drive. See your printed *Basics Guide* for more information.

If your mobile phone, PDA, or other device supports infrared transmission, you can send your photos to the RX580 and print them wirelessly. See your printed *Basics Guide* for more information.

Using the optional Epson Bluetooth Photo Print Adapter, you can also print wirelessly from a Bluetooth-enabled PDA, mobile phone, or computer. For more information, see the on-screen User's Guide.

## Replacing an Ink Cartridge


When you print with low or expended ink cartridges, you see a message on the LCD screen telling you which cartridges are low or expended.

You'll also see a message on your computer screen telling you which cartridge is low or expended.

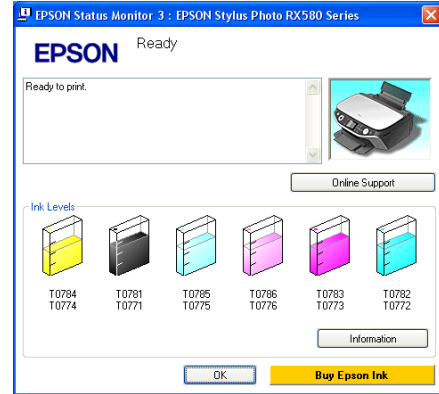
When a cartridge is more than six months old, you may need to replace it if printouts don't look their best. If the quality doesn't improve after cleaning and aligning the print head, you can replace the cartridge even if it is not expended.

## Checking the Ink Supply

To check the ink supply, do one of the following:

- ❑ **Windows:** Double-click the  icon on your taskbar (in the lower right corner of your screen).

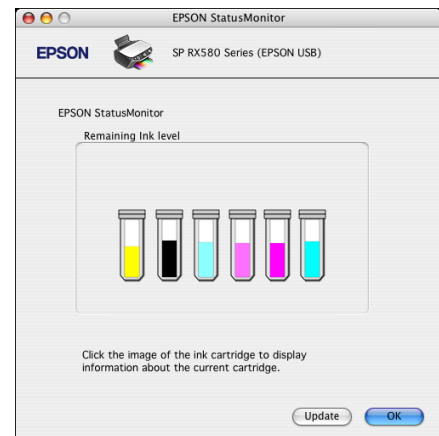
You see a window like this one:



To see the part numbers for the ink cartridges currently installed in your RX580, click **Information**.

- ❑ **Macintosh OS X:** Open the Applications folder and select EPSON Printer Utility2. Select SP RX580 Series in the printer list, click OK, and select EPSON StatusMonitor.

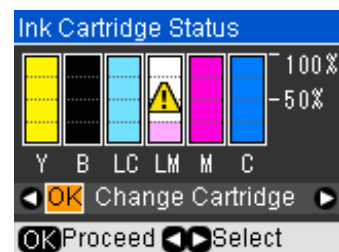
You see a window like this one:



Click a cartridge image to display information about the cartridge.

- ❑ **Using the buttons on the RX580:** Press Setup, press ◀ or ▶ to select Ink Cartridge Status, then press OK.

You see a screen showing the status of the ink cartridges:



When you're done, press ◀ or ▶ to select OK, then press OK.

## Ink Cartridge Precautions

**Warning:** Keep ink cartridges out of the reach of children. Do not allow children to drink from or handle the cartridges.

The ink cartridges are designed to contain any excess ink and prevent leakage. Careful handling is recommended, however. Do not touch the supply port of the ink cartridge or its surrounding area.

If ink gets on your hands, wash them thoroughly with soap and water. If ink gets in your eyes, flush them immediately with water. If discomfort or vision problems continue after a thorough flushing, see a doctor immediately.

**Caution:** Don't remove the cartridge label, or ink will leak.

Don't remove the green IC chip from the cartridge. Installing a cartridge without an IC chip can damage the RX580. Avoid touching the green IC chip, as this can damage the cartridge.

If you remove an ink cartridge temporarily, protect the ink supply port on the bottom of the cartridge from dirt and dust. Place it in a small box, or, if you have the original packaging, return it to its own box.

Store ink cartridges in the same environment as the RX580. Stand the cartridges upright; the label identifying the color should be on top.

**Note:** You cannot continue printing or copying with one ink cartridge expended, even if the other cartridges still contain ink. Before printing, replace the expended cartridge.

This RX580 uses ink cartridges equipped with IC chips that monitor the amount of ink used by each cartridge. Cartridges are usable even if they are removed and reinserted. Some ink is consumed each time cartridges are inserted, however, because the RX580 automatically checks their reliability.

If you remove a cartridge that is low (for which you have received an "Ink low" message) and you temporarily install a new cartridge in its place, you cannot reuse the low cartridge.

Ink is consumed during the following operations: print head cleaning, self-cleaning (performed when the RX580 is turned on), and ink charging (when an ink cartridge is installed).

## Removing and Installing Ink Cartridges

**Note:** Do not open ink cartridge packages until you are ready to install the ink. Cartridges are vacuum packed to maintain reliability.

**Caution:** Leave the expended cartridge installed until you have obtained a replacement, or the ink remaining in the print head nozzles may dry out. To ensure the best results, use genuine Epson ink cartridges and do not refill them. Other products may cause ink spills or other damage to your RX580 not covered by Epson's warranty.

1. Make sure the RX580 is turned on, the CD/DVD tray is not inserted, and the front tray is in the paper (lower) position. If it is not, lift the tray lever up to reposition the front tray.

2. Do one of the following:

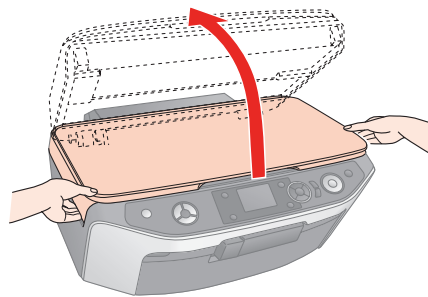
- ❑ If an ink cartridge is expended:

Look at the message on the LCD screen to find out which cartridge should be replaced, then press OK.

- ❑ If an ink cartridge is not expended:

Press **Setup**, press ◀ or ▶ to select **Maintenance**, then press OK. Then press ▲ or ▼ to select **Change Ink Cartridge**, and press OK.

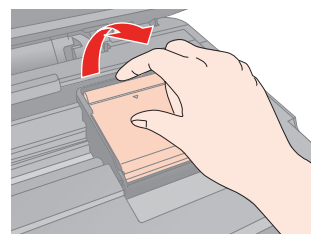
3. Make sure the document cover is closed, then lift up the scanner unit.



4. Open the cartridge cover.

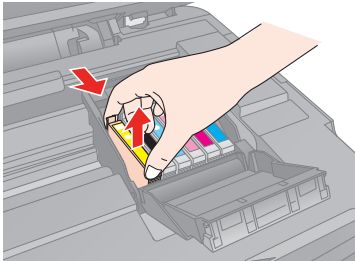
**Caution:** Never attempt to open the cartridge cover while the print head is moving; wait until the cartridges have moved to the replacement position.

To avoid damaging the RX580, never move the print head by hand.



5. Squeeze the tab at the back of the used cartridge and lift it straight out. Dispose of it carefully. Don't take the cartridge apart or try to refill it.

**Warning:** If ink gets on your hands, wash them thoroughly with soap and water. If ink gets in your eyes, flush them immediately with water. If discomfort or vision problems continue after a thorough flushing, see a doctor immediately.

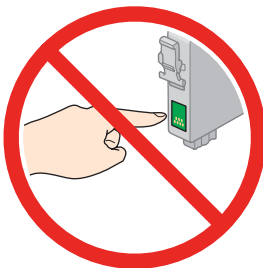


**Note:** If an ink cartridge is low, you may continue to use it until it is expended.

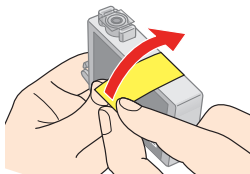
- Remove the new cartridge from its package.

**Caution:** Always install an ink cartridge immediately after removing the old cartridge. If the cartridge is not installed promptly, the print head may dry out and be unable to print.

Do not touch the green IC chip on the side of the cartridge. This can damage the ink cartridge.



- Remove the yellow tape from the bottom of the ink cartridge.

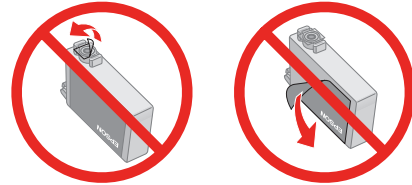


**Caution:** You must remove the yellow tape from the cartridge before you install it; otherwise, print quality may decline or you may not be able to print.

If you have installed an ink cartridge without removing the yellow tape, take the cartridge out of the RX580, remove the yellow tape, and then reinstall it.

Do not remove the transparent seal from the bottom of the cartridge; otherwise, the cartridge may become unusable.

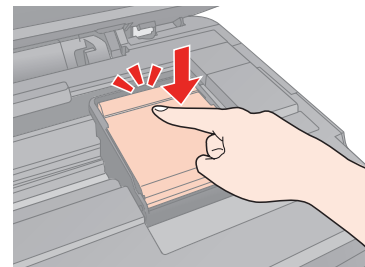
Do not remove or tear the label on the cartridge; otherwise, ink will leak.



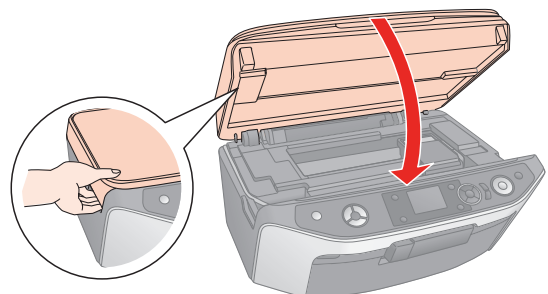
- Lower the new ink cartridge into the holder. Push down gently until the cartridge clicks into place.



- If you need to replace another ink cartridge, repeat steps 5 through 8 before continuing with step 10.
- Close the cartridge cover and press it until it clicks into place.



- Close the scanner unit.




## 12. Press OK.

The RX580 begins charging the ink delivery system and the message “Charging Ink. Please Wait” appears on the LCD screen.

After about one minute, the message “Ink cartridge replacement is complete” appears on the LCD screen.

**Caution:** Do not turn off the RX580 during ink charging or you'll waste ink.

Do not insert the CD/DVD tray until ink charging is complete.

**Note:** If you had to replace an ink cartridge during copying, the documents or photos on the document table may have moved slightly when you opened and closed the scanner unit. To ensure copy quality, after ink charging is finished, press the  **Stop/ Clear Settings** button to cancel the job that is copying and start again.

## Cleaning the Print Head

If your printouts are unexpectedly light or faint, or you notice light or dark bands across your printout, you may need to clean the print head. This unclogs the nozzles so they can deliver ink properly.

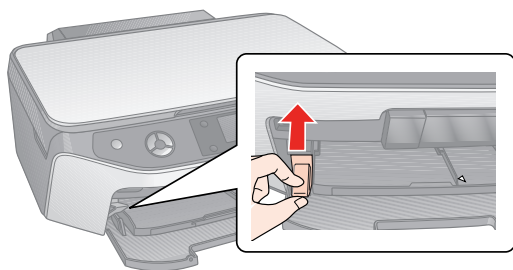
**Note:** Print head cleaning uses ink, so clean the print head only when print quality declines (for example, if you see lines in your printout or colors are incorrect or missing).

Before you clean the print head, check the print head nozzles to confirm that the print head needs to be cleaned. This saves ink. For more information, see “Checking the Print Head Nozzles” on the right.

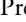

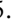
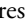

If error messages indicating ink expended or ink low appear on the LCD screen, you cannot clean the print head. Replace the appropriate ink cartridge first.

**Caution:** If you don't use your RX580 often, it is a good idea to print a few pages at least once a month to maintain good print quality.

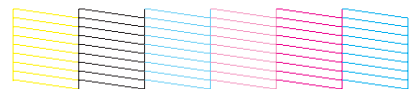
Before you check the print head nozzles or clean the print head, make sure the CD/DVD tray is not inserted in the RX580, and make sure the front tray is in the paper (lower) position. If it is not, lift the tray lever up to reposition the front tray.



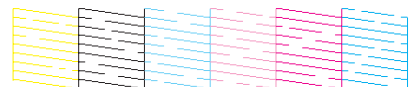
## Checking the Print Head Nozzles

1. Make sure the RX580 is turned on but not printing, and no warnings or errors are displayed on the LCD screen.
2. Make sure letter-size plain paper is loaded in the RX580.
3. Press the **Setup** button.
4. Press  or  to select **Maintenance**, then press **OK**.
5. Press  or  to select **Nozzle Check**, then press **OK**.
6. Press the  **Start** button.
7. The nozzle check pattern prints:

Print head does not need to be cleaned:



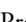




Print head needs to be cleaned:



8. If there are no gaps or lines, the print head does not need to be cleaned. Press **OK** to return to the **Maintenance** menu.

If there are gaps or lines, or the test patterns are faint, follow the steps in “Cleaning the Print Head” below to clean the nozzles.

## Cleaning the Print Head

1. Make sure the RX580 is turned on but not printing, and no warnings or errors are displayed on the LCD screen. (If error messages indicating ink expended or ink low appear on the LCD screen, you need to replace a cartridge as described on page 11.)
2. Press the **Setup** button.
3. Press  or  to select **Maintenance**, then press **OK**.
4. Press  or  to select **Head Cleaning**, then press **OK**.
5. Press the  **Start** button.

Cleaning takes several seconds. The message “Print head cleaning in progress. Please wait” appears on the LCD screen.

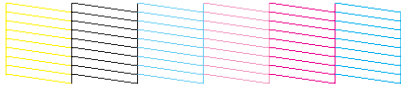
**Caution:** Never turn off your RX580 while the message “Print head cleaning in progress. Please wait” appears on the LCD screen. You may damage it.

Do not insert the CD/DVD tray until cleaning has finished.

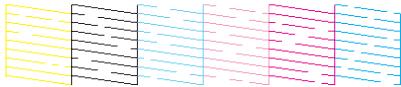
- When the message “Print head cleaning complete” appears on the LCD screen, make sure paper is loaded in the RX580, then press the **Start** button.

The nozzle check pattern prints.

- If there are no gaps or lines (as shown below), press **OK** to return to the Maintenance menu.



If there are still gaps or lines, or the test patterns are faint (as shown below), click the **Start** button to clean the print head again.



If you don't see any improvement after cleaning four times, turn the RX580 off and wait for at least 6 hours. This allows any dried ink to soften. Then, try cleaning the print head again.

## Aligning the Print Head

If your printouts look grainy or blurry, or you see light or dark lines, you may need to align the print head.

**Note:** You may also see lines in your printouts if your cartridges are low on ink or you need to clean the print head.

Do not press the **Stop/Clear Settings** button while printing an alignment sheet.

Before you align the print head, make sure the CD/DVD tray is not inserted in the RX580, and make sure the front tray is in the paper (lower) position. If it is not, lift the tray lever up to reposition the front tray.

- Make sure the RX580 is turned on but not printing, and no warnings or errors are displayed on the LCD screen.
- Make sure letter-size plain paper is loaded in the RX580.
- Press **Setup**.
- Use the **Left** or **Right** button to select **Maintenance**, then press **OK**.
- Use the **Up** or **Down** button to select **Head Alignment**, then press **OK**.

- Press the **Start** button. Your RX580 prints an alignment sheet like this one:



The alignment sheet contains four sets of squares.

- Look at the printed squares in set #1 to determine which one is the most even, with no streaks or lines. You may have to use a magnifying glass.
- Press **Right**, then press **Up** or **Down** to select the number for that square.
- Press **OK**.
- Press **Down** to select the next set, then repeat steps 7 through 9.
- When you've finished making your selections for each of the four sets, press **OK**.

## Transporting the RX580

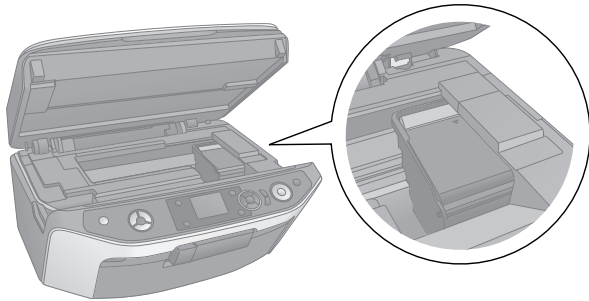
If you need to ship your RX580, you must prepare it for transportation by packing it in its original box or one of a similar size.

**Caution:** When storing or transporting the RX580, do not tilt it, stand it up vertically, or turn it upside down. Otherwise, ink may leak from the cartridges.

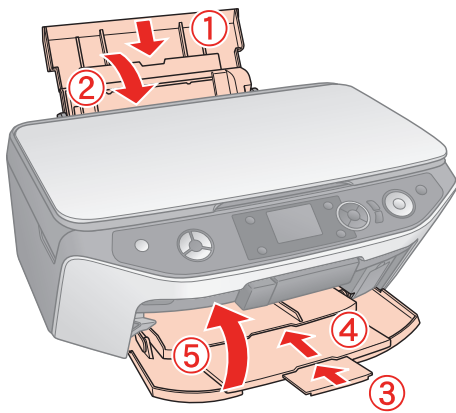
Leave the ink cartridges installed. Removing the cartridges can dehydrate the print head and may prevent the RX580 from printing.

- Remove all paper from the sheet feeder.
- Turn the RX580 off.
- Remove any memory cards installed in the memory card slots.

4. Lift up the scanner unit and make sure the print head is in the home (far right) position.



5. Close the scanner unit.
6. Unplug the power cord from the outlet, then disconnect the USB cable from your computer.
7. Close the paper support, the front tray, and front cover.



8. Repack the RX580 in the box, using the protective materials that came with it.

Keep the RX580 level as you transport it.

After transporting the RX580, plug it in, turn it on, and test it. If you notice a decline in print quality, clean the print head as described on page 14; if output is grainy or blurry, align the print head as described on page 15.

---

### Related Documentation

---

CPD-22267R1	Epson Stylus Photo RX580 <i>Start Here</i>
CPD-22269	Epson Stylus Photo RX580 <i>Basics Guide</i>
CPD-22268R1	Epson Stylus Photo RX580 CD-ROM with on-screen <i>User's Guide</i>