

# PRINT Image Matching II Plug-in

## for Adobe Photoshop and Adobe Photoshop Elements

PRINT Image Matching™ (P.I.M.)-enabled digital cameras embed information in digital photo files to maximize the image quality of the print—including a wider range of colors and enhancements set in the camera itself. PRINT Image Matching technology ensures that P.I.M.-enabled digital cameras and printers work together perfectly to consistently and easily create the best possible prints. The P.I.M. II Plug-in for Adobe® Photoshop® allows you to retain the PRINT Image Matching *image quality* when you import files from your P.I.M.-enabled or Exif Print-enabled digital camera.

**Note:** Results will vary among camera makes and models.

For more information about PRINT Image Matching, including a complete list of P.I.M.-enabled camera models and software titles, visit the web site at [www.printimagematching.com](http://www.printimagematching.com).

This guide tells you how to import and print your PRINT Image Matching and Exif Print images in Adobe Photoshop and Photoshop Elements in the following sections:

- [What Is New About P.I.M. II](#) ..... [page 2](#)
- [How Does P.I.M. II Work in Adobe Photoshop?](#) ..... [page 3](#)
- [Importing a P.I.M. Image](#) ..... [page 3](#)
- [Printing a P.I.M. Image](#) ..... [page 5](#)
  - [Printing in Photoshop 7.0, CS, and Photoshop Elements \(Windows\)](#) ..... [page 5](#)
  - [Printing in Photoshop 7.0, CS, and Photoshop Elements \(Macintosh\)](#) ..... [page 8](#)
  - [Printing in Photoshop 6.0](#) ..... [page 11](#)
- [Uninstalling the Plug-in](#) ..... [page 12](#)

## What Is New About P.I.M. II

While keeping all the great aspects of PRINT Image Matching, the P.I.M. II Plug-in has been updated to include the following new features:

- Additional enhancements to PRINT Image Matching technology including noise reduction, custom settings, and more
- Support for the TIFF file format in addition to standard JPEG files
- Support of all digital camera models that are P.I.M.-, P.I.M. II-, or Exif Print-enabled

The P.I.M. II Plug-in works with Adobe Photoshop 6.0, 7.0, CS, and Photoshop Elements 1.0, 2.0, and 3.0. To use the P.I.M. II Plug-in, you also need to use the ICC profiles for your printer. In Windows®, the profiles are installed along with the plug-in itself; on the Macintosh®, they are automatically installed with the printer driver.

The following printers currently support PRINT Image Matching II, PRINT Image Matching, and Exif Print with this P.I.M. II Plug-in:

- Epson Stylus® Photo R200
- Epson Stylus Photo R300/R300M
- Epson Stylus Photo R320
- Epson Stylus Photo R800
- Epson Stylus Photo RX500
- Epson Stylus Photo RX600
- Epson Stylus Photo 780
- Epson Stylus Photo 785EPX
- Epson Stylus Photo 820
- Epson Stylus Photo 825
- Epson Stylus Photo 890
- Epson Stylus Photo 900
- Epson Stylus Photo 925
- Epson Stylus Photo 960
- Epson Stylus Photo 1280
- Epson Stylus Photo 2000P\*
- Epson Stylus Photo 2200
- PictureMate™ by Epson

\* This printer only supports PRINT Image Matching through this Adobe Photoshop P.I.M. II Plug-in. It is not P.I.M.-enabled for other programs.

For an up-to-date list of P.I.M.-enabled products, visit [www.printimagematching.com](http://www.printimagematching.com).

---

## How Does P.I.M. II Work in Adobe Photoshop?

Adobe Photoshop does not retain the PRINT Image Matching or Exif Print information separately in the header file when you import your P.I.M. or Exif Print image. Instead, it creates a profile by converting the information into the file and embedding a color space called EPSON RGB 2001. This profile supports all the PRINT Image Matching color advantages and enhancements.

You can crop, rotate, resize, work with layers, use filters, and even make selective color adjustments to the P.I.M. II image while retaining P.I.M. II quality. However, you will lose the P.I.M. II enhancements if you apply global color adjustments to your image (such as Auto Levels, Auto Contrast, Auto Color, etc.).

If you try to use your new Adobe Photoshop file in another P.I.M.-enabled software program, it will not be recognized as a P.I.M. image. If you want to keep the P.I.M. header information intact for use in other P.I.M.-enabled programs, keep the original file. Do not use the **Save** command on your original file.

Instead, use the **Save As** command and rename it to save a new file. The new file will not contain P.I.M. header information but will still retain *P.I.M. image quality*. If you overwrite your original file you will lose all PRINT Image Matching and Exif Print header information.

---

## Importing a P.I.M. Image

Follow these steps to import a P.I.M. image into Adobe Photoshop 6.0, 7.0, CS, or Photoshop Elements 1.0, 2.0, or 3.0.

**Note:** If you're using Photoshop Elements, you need to change your color settings *before* importing a P.I.M. image. Open the Edit menu or Photoshop menu (Mac OS X) and select **Color Settings**. Choose **Full Color Management** or **Full color management - optimized for Print** and click **OK**.

Some of the illustrations below show Macintosh screens. Your screens will look different if you're using Windows, but you'll choose the same settings.

1. Open the File menu and select **Import > PRINT Image Matching II**. You see a window like this:

2. Locate the folder where your P.I.M. or Exif Print images are stored.

In Windows, you see a list of all JPEG and Tiff files stored in the folder. On a Macintosh, you see only files that are P.I.M. and Exif Print files.

3. Select the file you want to import.

4. To display a preview of the P.I.M. II or Exif Print effects for the selected image, check the **Image Preview** box.

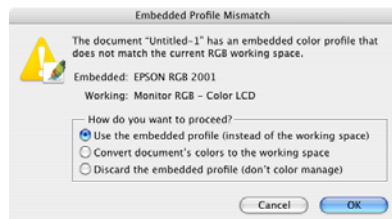
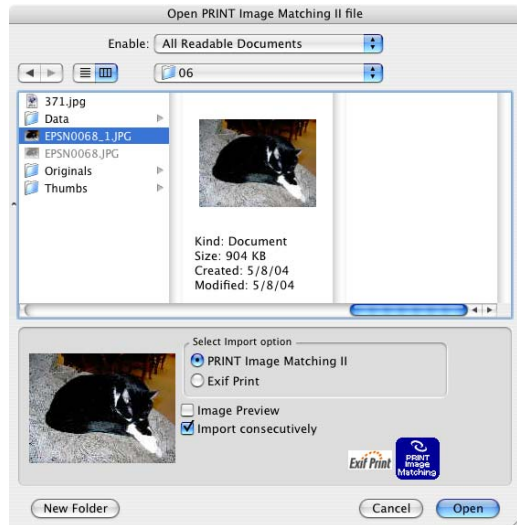
5. Choose an Import option:

- **PRINT Image Matching II** enables the greatest range of image enhancements/effects. It also supports the EPSON RGB expanded color space, which is required for PRINT Image Matching prints. This setting is available for all P.I.M. images.
- **Exif Print** enables Exif 2.2 effects and allows an expanded color space. This option does not use P.I.M. settings. This setting is only available for files that contain Exif Print data.

6. Click the **Open** button. Your image opens.

**Note:** If you see this Embedded Profile Mismatch warning, select **Use the embedded profile** and click **OK**. If you see a similar warning with no options, click **OK**.

7. You can select and open additional P.I.M. or Exif Print images, or click **Cancel** to close the **Open PRINT Image Matching II** file window. (If you don't want the window to remain on the screen after you open a file, uncheck **Import Consecutively**.)



**Note:** To keep the P.I.M. header information intact for use in other P.I.M.-enabled programs, keep the original file. Do not use the **Save** command to save your original file.

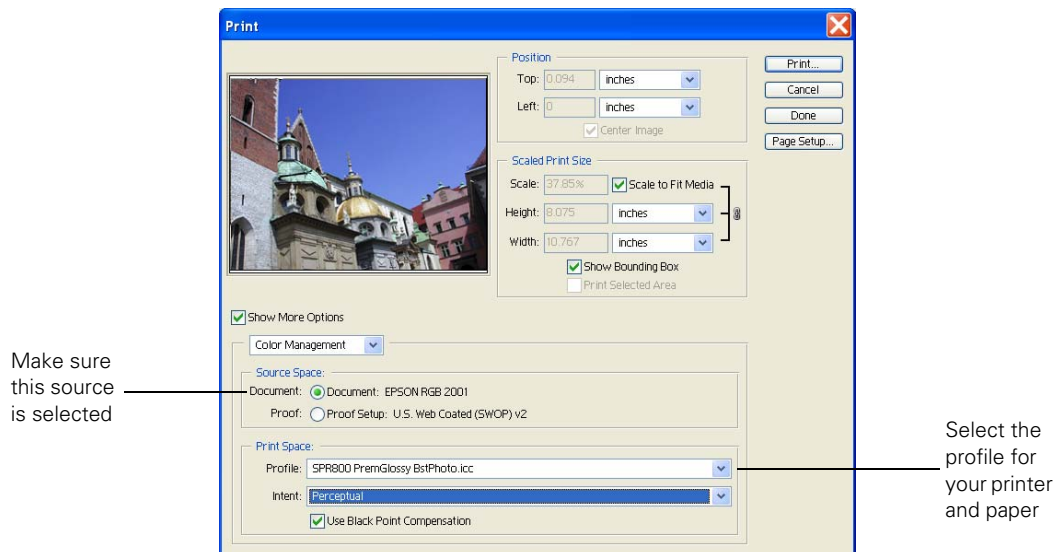
Instead, before you start working with your file in Photoshop, use the **Save As** command and rename it to save a new file. The new file will not contain P.I.M. header information but will still retain *P.I.M. image quality*. If you overwrite your original file you will lose all PRINT Image Matching or Exif Print header information.

## Printing a P.I.M. Image

PRINT Image Matching images are converted into the EPSON RGB 2001 color space. To retain the P.I.M. quality and enhancements, make sure you don't change the color space. Follow the steps in one of the sections below, depending on the program and operating system you're using.

### Printing in Photoshop 7.0, CS, and Photoshop Elements (Windows)

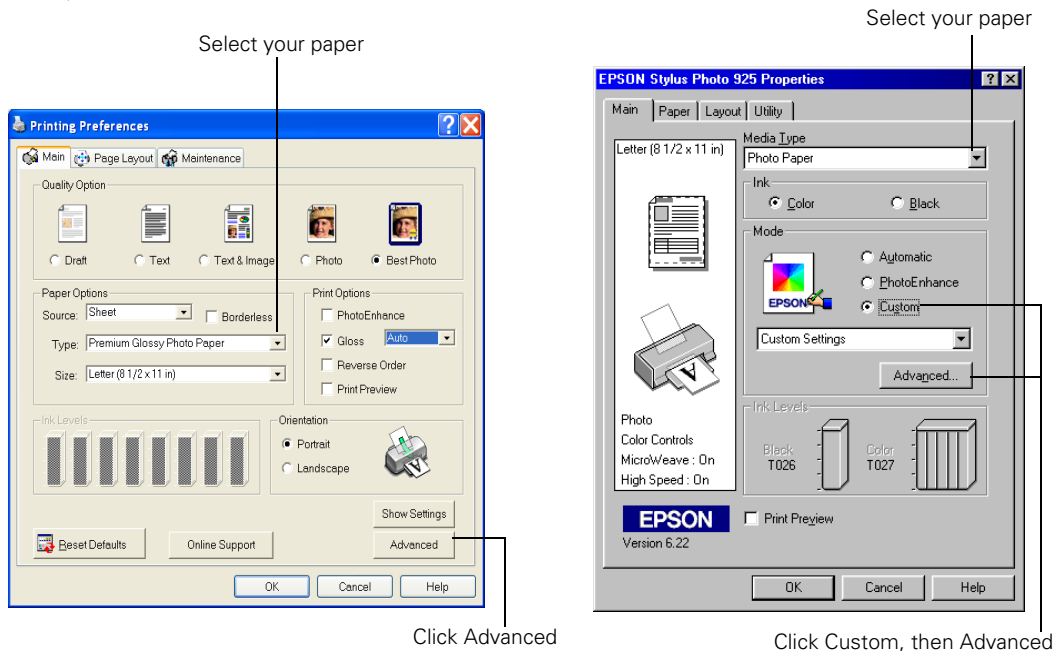
1. From the File menu, select **Print Preview, Print with Preview**. (Choose **Print** if you are using Photoshop Elements 3.0.) Then click **Show More Options** and select **Color Management**. You see a screen like this:



Make sure this source is selected

Select the profile for your printer and paper

2. In the Source Space box, make sure **EPSON RGB 2001** is selected.
3. In the Print Space box, select the profile for your printer and the paper you're using. Select **Perceptual** for the Intent.
4. Click **Print**.
5. Click **Setup**, then select your printer and click the **Properties** or **Preferences** button. You see your printer **Properties** or **Preferences** window:

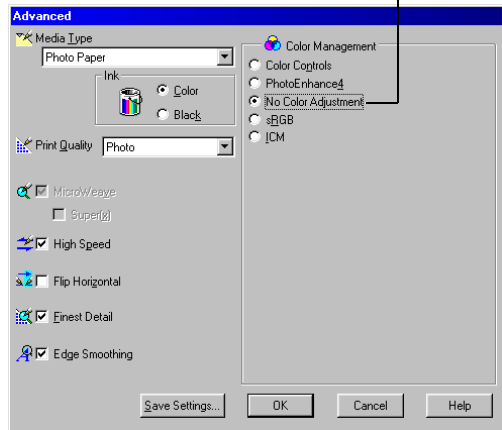
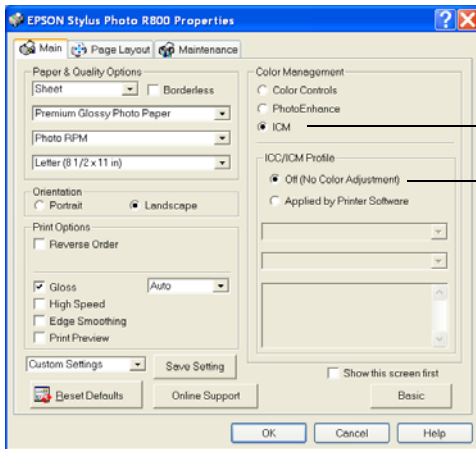


6. Under **Media Type** (or **Type**), select the paper you're printing on.
7. Click the **Advanced** button. (If you don't see an **Advanced** button, click **Custom**, then click **Advanced**.)

You see the Advanced settings:

Select ICM, then select No Color Adjustment

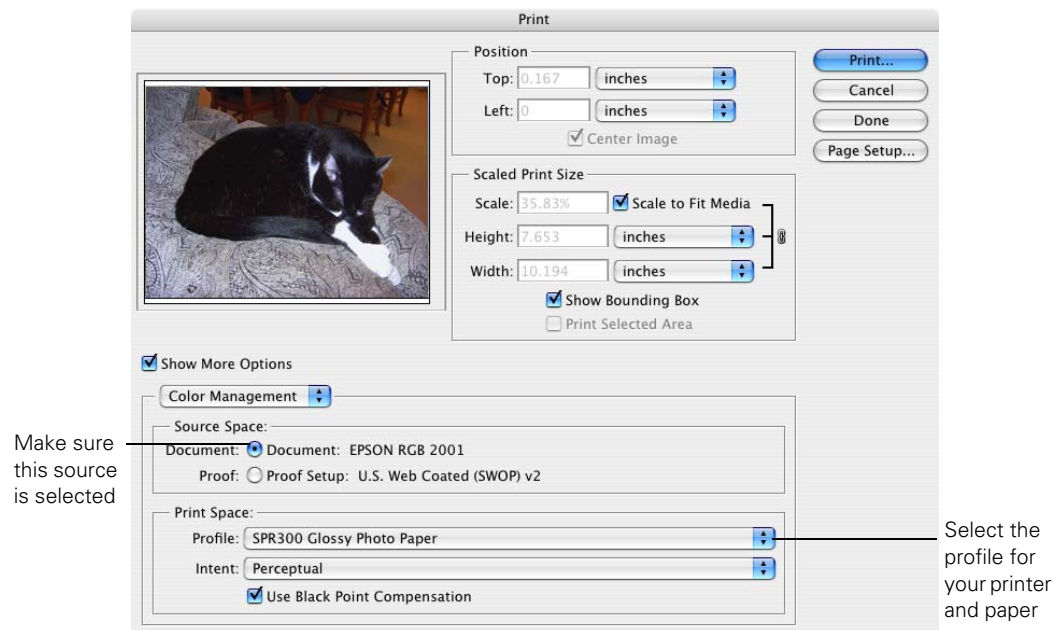
Select No Color Adjustment



8. In the Color Management box, select **No Color Adjustment** and click **OK**. (If you don't see **No Color Adjustment**, click **ICM**, then click **Off (Not Color Adjustment)** or **No Color Adjustment**.)
9. Continue clicking **OK** to print your photo.

# Printing in Photoshop 7.0, CS, and Photoshop Elements (Macintosh)

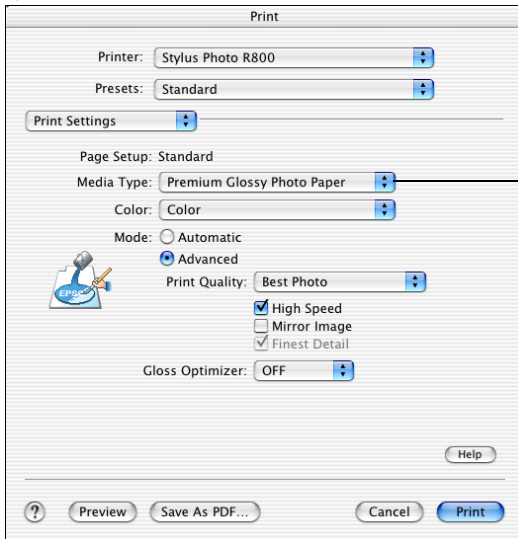
1. Open the File menu and select Print Preview or Print with Preview. (Choose Print if you are using Photoshop Elements 3.0.) Then click Show More Options and select Color Management. You see a window like this:



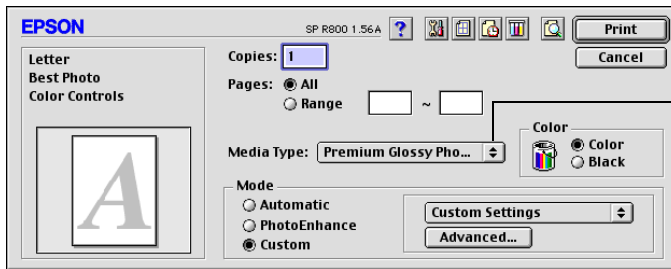
2. In the Source Space box, make sure EPSON RGB 2001 is selected.
3. In the Print Space box, select the profile for your printer and the paper you're using. Select Perceptual for the Intent.
4. Click Print.



You see your Print window:



Mac OS X



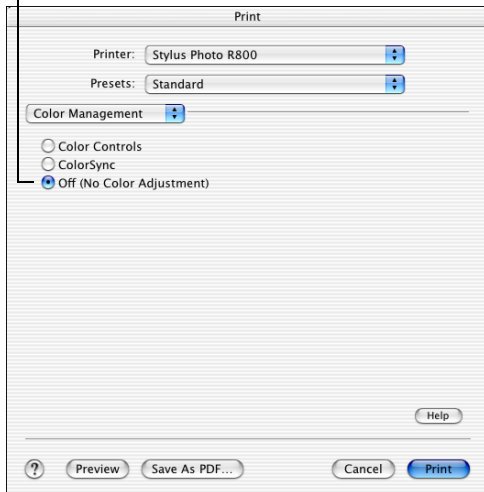
Mac OS 9

5. Under Media Type, select the paper you're printing on.
6. In Mac OS X, choose Color Management to show the Color Management settings.

In Mac OS 9.x, click **Custom** in the Mode box, then click the **Advanced** button.

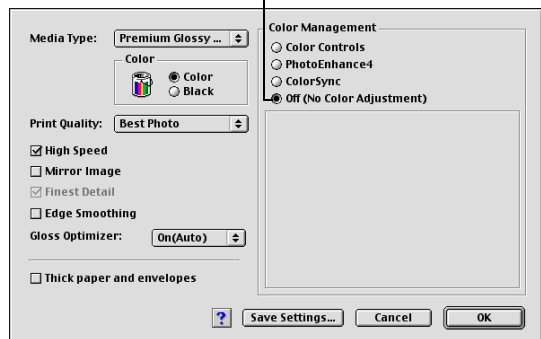
You see the Color Management or Advanced settings:

Select Off (No Color Adjustment)



Mac OS X

Select Off (No Color Adjustment)

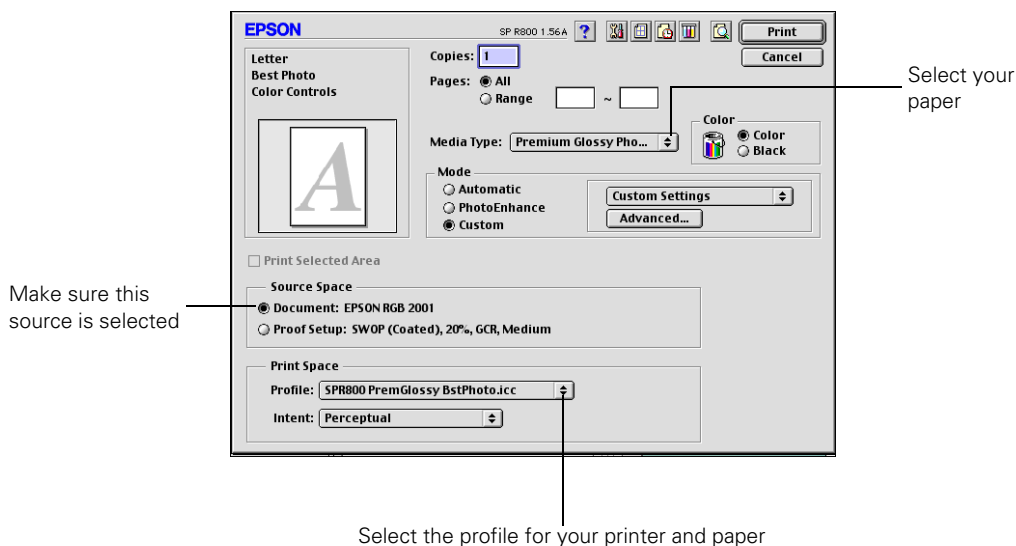


Mac OS 9

7. Under Color Management, select **Off (No Color Adjustment)**. Click OK if necessary.
8. Click **Print** to print your photo.

## Printing in Photoshop 6.0

1. Open the File menu and select **Print**. You see a window like the following (Mac OS 9 is shown, but the screen in Windows has the same settings):



2. In the Source Space box, make sure **Document: EPSON RGB 2001** is selected.
3. In the Print Space box, select the profile for your printer and the paper you're printing on. Select **Perceptual** for the Intent.

**Note:** If you're using Windows, click **Setup**, then select your printer and click **Properties** or **Preferences**.

You see your printer Properties or Preferences window.

4. In Windows, click the **Advanced** button. (If you don't see an **Advanced** button, click **Custom**, then click **Advanced**.)

In Mac OS 9.x, click **Custom** in the Mode box, then click the **Advanced** button.

5. In the Color Management box, select **No Color Adjustment** and click **OK**. (If you don't see **No Color Adjustment**, click **ICM**, then click **Off (Not Color Adjustment)** or **No Color Adjustment**.)
6. Continue clicking **OK** (Windows) or click **Print** (Macintosh) to print your photo.

---

# Uninstalling the Plug-in

If you need to uninstall the P.I.M. II Plug-in, follow the instructions below.

## ***Macintosh***

Delete the PRINT Image Matching II file from the Plug-Ins\Import-Export folder in your Adobe Photoshop or Adobe Photoshop Elements program folder.

## ***Windows***

1. Click **Start**, (**Settings**), **Control Panel**.
2. Select **Add or Remove Programs** or double-click **Add/Remove Programs**.
3. Select **P.I.M. II Plug-In** from the list and click **Change/Remove** or **Add/Remove**.
4. Select **Remove P.I.M. II Plug-In** and click **Finish**.
5. Follow the on-screen instructions to uninstall the plug-in.

PRINT Image Matching II. Copyright 2003 Seiko Epson Corporation. All rights reserved. PRINT Image Matching and the PRINT Image Matching logo are trademarks and Epson, Epson Stylus, and PictureMate are registered trademarks of Seiko Epson Corporation.

General Notice: Other product names used herein are for identification purposes only and may be trademarks of their respective owners. Epson disclaims any and all rights in those marks.

PRINT Image Matching is a term for the print command that is embedded in the header file of the image created by a digital camera. It contains color setting and image parameter information.