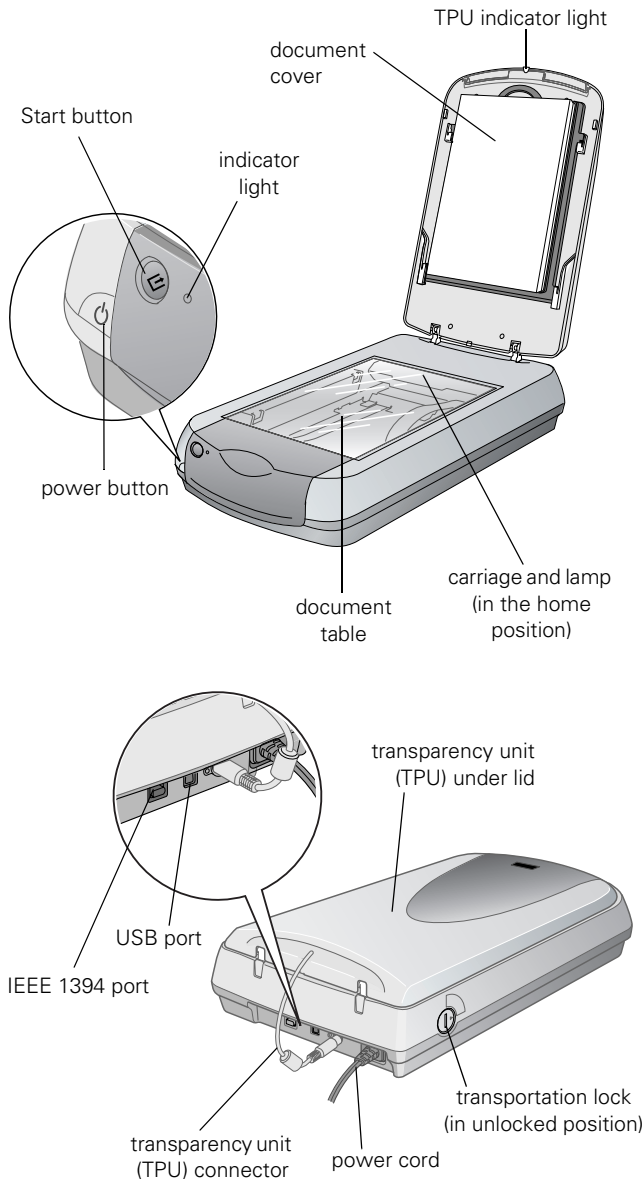


Scanner Parts



Maximum document size	US letter or A4 size (8.5 × 11.7 inches [216 × 297 mm])
Optical resolution	3200 dpi
Maximum resolution*	3200 dpi (main scan) × 6400 dpi hardware (sub scan)
* The maximum hardware resolution of 3200 × 6400 dpi is achieved using EPSON's Micro Step Drive™ technology.	
Maximum interpolated resolution	12,800 dpi
Output resolution	25 to 12,800 dpi (50 to 6400 dpi in 1 dpi increments, 12,800 dpi performed with zoom function)
Speed (color)	14.3 msec/line at 3200 dpi 3.5 msec/line at 600 dpi
Command level	ESC/I (B8), FS
Zoom	50 to 200% in 1% increments
Pixel depth	16 bits per pixel (input and output)
Brightness	7 levels
Line art settings	Fixed threshold TET (Text Enhancement Technology), enable/disable selectable
Digital halftoning	AAS (Auto Area Segmentation), enable/disable selectable 3 error diffusion modes (A, B, and C) and 4 dither patterns (A, B, C, and D) for bi-level and quad-level data (2 downloadable dither patterns)
Gamma correction	2 types for CRT display 3 types for printer output 1 type for user-defined
Color correction	1 type for CRT display 3 types for printer output 1 type for user-defined (only user-defined color correction is available in EPSON TWAIN)

Scanner Specifications

Basic Specifications

Scanner type	Flatbed, color
Photoelectric device	Color CCD line sensor
Effective pixels	27,200 × 37,440 pixels at 3200 dpi, 100% scaling

Interface	USB 1.1/2.0 (Type B receptacle connector) IEEE 1394 (FireWire™)
Light source	White cold cathode fluorescent lamp
Reliability (MCBF)	30,000 cycles of carriage movements
Dimensions	Width: 12.0 inches (30.4 cm) Depth: 18.7 inches (47.6 cm) Height: 4.8 inches (12.2 cm)
Weight	Approx. 13.2 lb (6.0 kg)

Electrical

Input voltage range	100-120 VAC
Rated input current	0.45 A
Power consumption	Approx. 24 W operating approx. 19 W in stand-by mode approx. 5.5 W in power saving mode

Note: Scanners sold outside the US market may operate at a different voltage. Check the label on the back of the scanner for voltage information.

Environmental

Temperature	Operation: 41 to 95 °F (5 to 35 °C) Storage: -13 to 140 °F (-25 to 60 °C)
Humidity (without condensation)	Operation: 10% to 80% Storage: 10% to 85%
Operating conditions	Ordinary office or home conditions; avoid extreme dust, direct sunlight, and strong light sources.

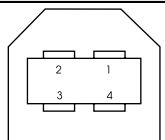
Safety Approvals

Safety	UL 1950 CSA C22.2 No. 950
EMC	FCC part 15 subpart B class B CSA C108.8 class B

USB Interface

Interface type	Universal Serial Bus Specification Revision 2.0
Connector type	One receptacle (Type B)
Electrical standard	Full Speed mode (12 Mbps) and High Speed mode (480 Mbps), Universal Serial Bus Specification Revision 2.0

Connector pin arrangement

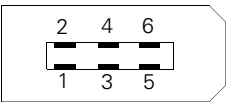
Pin number	Signal	Connector
1	VCC	
2	-DATA	
3	+DATA	
4	GND	

FireWire Interface

Interface type	IEEE 1394a-2000 compatible
----------------	----------------------------

Data transfer	Half-duplex data / strobe differential serial
Transfer speed	Average: 4 Mbytes/sec Peak: 50 Mbytes/sec (100 to 400 Mbps)
Synchronization	Clock synchronization with DS-Link
Encoding/Decoding	DS-Link
Logic level	3.3. V

Connector pin arrangement

Pin number	Signal	Connector
1	VCC	
2	GND	
3	TPB-	
4	TPB+	
5	TPA-	
6	TPA+	

Transparency Unit

The transparency unit is built into the scanner lid.

Electrical	Supply voltage: DC 21.6 to 26.4 V Rated current: 0.5 A
Document specifications	Positive or negative film in the following sizes: 35 mm strips 35 mm slides 120/220 (6 × 9-cm) film 4 × 5-inch film
Readable area	4 × 9 inches (102 × 230 mm)

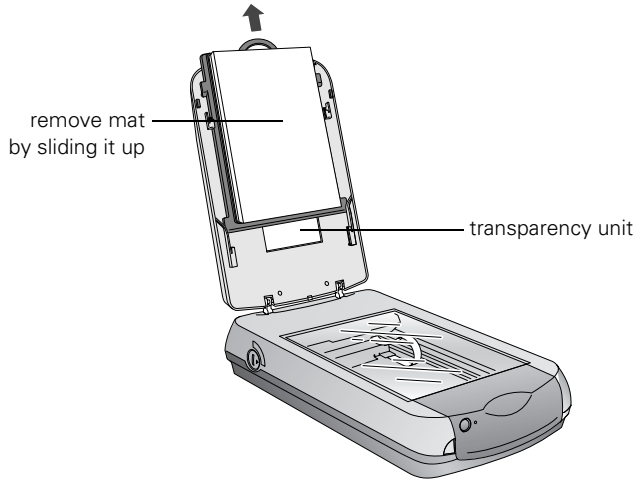
Scanning Transparencies and Film

Before scanning transparent documents, you need to remove the scanner's reflective document mat; this exposes the scanner's transparency unit (light source), which is built into the lid.

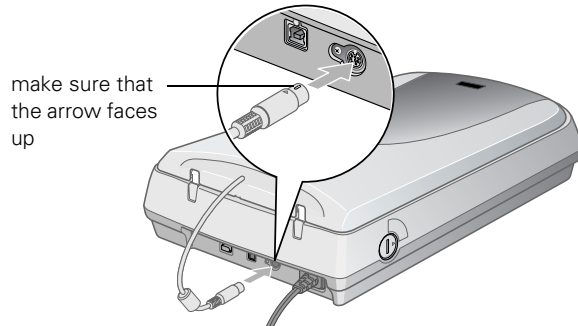
If you're scanning slides or film strips, you'll also need to use one of the film holders.

Using the Transparency Unit

To use the transparency unit, remove the reflective document mat by grasping the top of the mat and sliding it up gently, as shown.



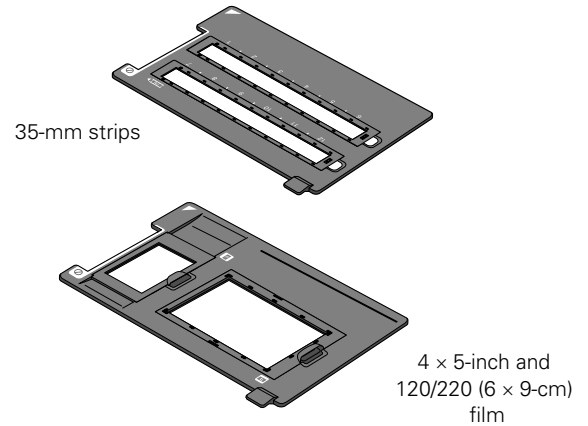
Make sure the cable for the transparency unit is plugged into the round connector. If not, turn off the scanner, then connect the cable as shown. You may need to raise the scanner cover and twist the cable to insert it.



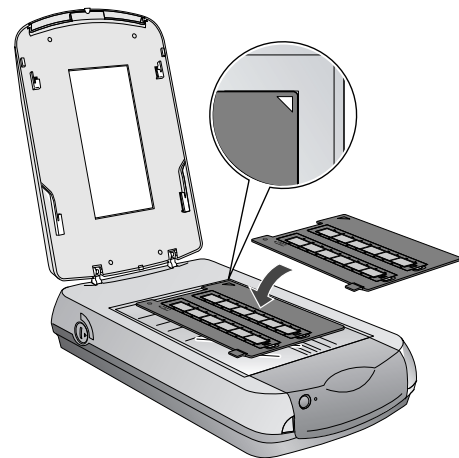
Using Film Holders

Film has two sides, a shiny base side and a dull emulsion side. The base side of the film has the film maker's name and film ID numbers printed on it. Place the shiny base side down.

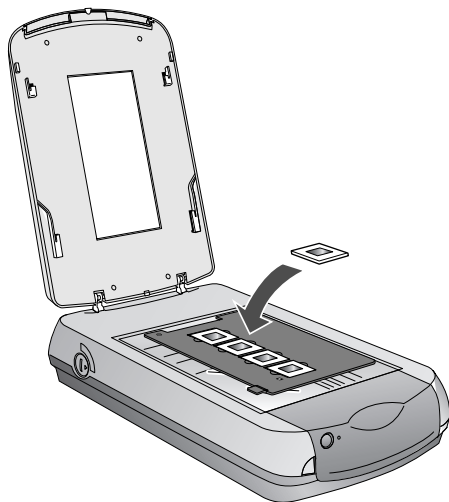
To scan 35-mm film strips, 4 × 5-inch film, or 120/220 (6 × 9-cm) film, place the film in the correct holder:



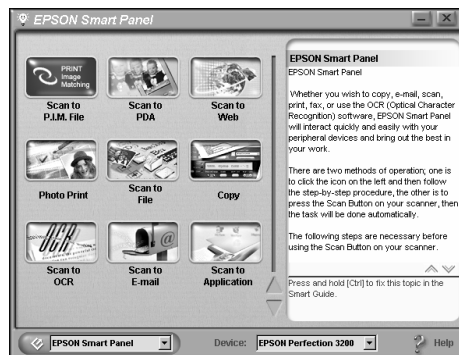
Place the holder with the film onto the scanner. Make sure the white triangle on the holder points to the upper-right corner of the scanner's document table.



Note: If you're scanning 35-mm slides, set the holder on the scanner first, then place the slides in the holder.

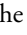




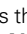
EPSON Smart Panel opens on your computer.



Using EPSON Smart Panel

Follow these steps to use EPSON Smart Panel to scan documents or photos:

1. Place the original document(s) face down on the document table.
2. Do one of the following to open the Smart Panel:
 - Press the  Start button on your scanner.
 - Double-click the  Smart Panel icon on the desktop.
 - On a Macintosh®, you can also open the Apple® menu and select EPSON SMART PANEL.
 - In Windows® XP, click Start > All Programs > EPSON Smart Panel > EPSON Smart Panel.

Note: The  Start button does not support OS X. EPSON Smart Panel is available as a Classic application only. In Windows XP, you may see a message the first time you press the  Start button. Select **Smart Panel for Scanner**, click **Always use this program for this action**, then click **OK**.

3. Click the option of your choice to scan:

Copy: Make a quick copy, or several copies, of your document. Printing with EPSON color ink jet printers is recommended.

Photo Print: Make prints from your photos, negatives, and slides. Printing with EPSON color ink jet printers is recommended.

Scan to Application: Scan an image and open it in any supported application.

Scan to E-mail: If you have a MAPI-compliant e-mail program, scan an image and automatically attach it as a file to a new message.

Note: AOL® is not supported by this option. For a list of supported browsers, see your *Smart Panel User's Guide*.

Scan to File: Save your scan directly to a file on your hard drive.

Scan to OCR: Scan a text document and open it in your word processing application, then edit it and save it as a new file.

Scan to PDA: Starts PixExpress to automatically format scans and send them to your Palm™ or Pocket PC device.

Scan to P.I.M. File: Save images with an expanded color space and additional P.I.M. (PRINT Image Matching) enhancements for printing with a P.I.M.-enabled printer and P.I.M. application.

Scan to Web: Scan your photos and upload them to the EPSON PhotoCenterSM photo-sharing website to share them with family and friends. To sign up for an account, go to <http://photo.epson.com>.

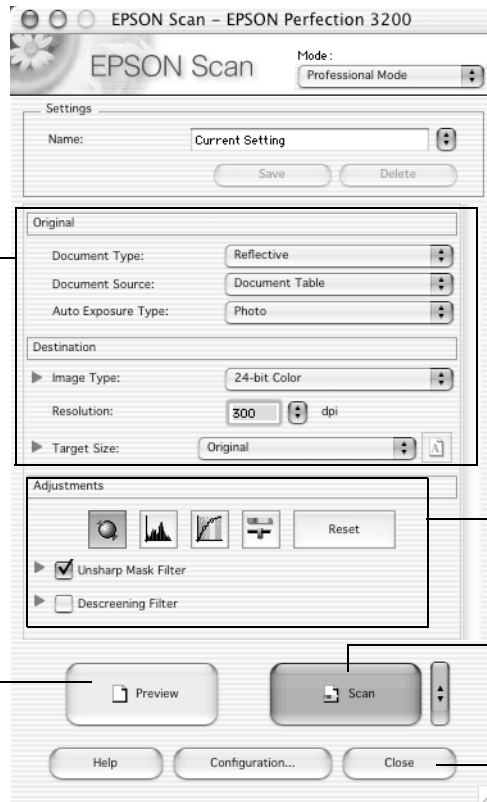
4. Follow the on-screen instructions to use the Smart Panel options. On many Smart Panel screens, you'll need to click **Finish** to continue scanning and **Launch** to start other programs. See your on-screen *Smart Panel User's Guide* for detailed instructions.

Selecting EPSON Scan Settings

If you need to manually adjust the settings in EPSON Scan, follow the guidelines shown at right. The illustration shows EPSON Scan (in Professional Mode) with the preferred order in which settings should be adjusted. Detailed descriptions are given in the electronic *Reference Guide*.


Tip: The most important thing to remember when scanning is to select the correct image type and resolution for your scan.

- 1 Select basic settings:
 - Document Type
 - Document Source
 - Image Type
 - Resolution
 - Target Size



- 3 Customize your exposure and use color management
- 4 Scan the image into your application
- 5 Close EPSON Scan

Indicator Light

The indicator light (next to the  Start button) indicates the status of the scanner, as described below.

Light	Color	Status
On	Green	The scanner is ready to scan images.
Flashing	Green	The scanner is initializing (warming up) or is busy scanning.
Flashing	Red	<p>Check the following, then turn your scanner off and back on to reset it:</p> <ul style="list-style-type: none"> <input type="checkbox"/> Make sure the transportation lock is turned to the unlocked position. See the <i>Start Here</i> sheet for details. <input type="checkbox"/> Make sure the scanner is properly connected to your computer. <input type="checkbox"/> If you are scanning transparencies, make sure you've removed the reflective document mat. <p>If this does not eliminate the error, the fluorescent lamp may need to be replaced or the scanner may have another problem. Consult your dealer or EPSON.</p>
Off	—	The scanner is unplugged or turned off.

Related Documentation

- CPD-15341 EPSON Perfection 3200 PHOTO *Start Here* poster
- CPD-15350 EPSON Perfection 3200 Pro *Start Here* poster
- CPD-15345 EPSON Perfection 3200 Series scanner software CD-ROM
- CPD-15344 EPSON Perfection 3200 Series *Notices* booklet
- *Reference Guide* (HTML)
- EPSON Smart Panel *User's Manual* (HTML)
- TM-PERF3200 EPSON Perfection 3200 Series Service Manual
- PL-PERF3200 EPSON Perfection 3200 Series Parts List

