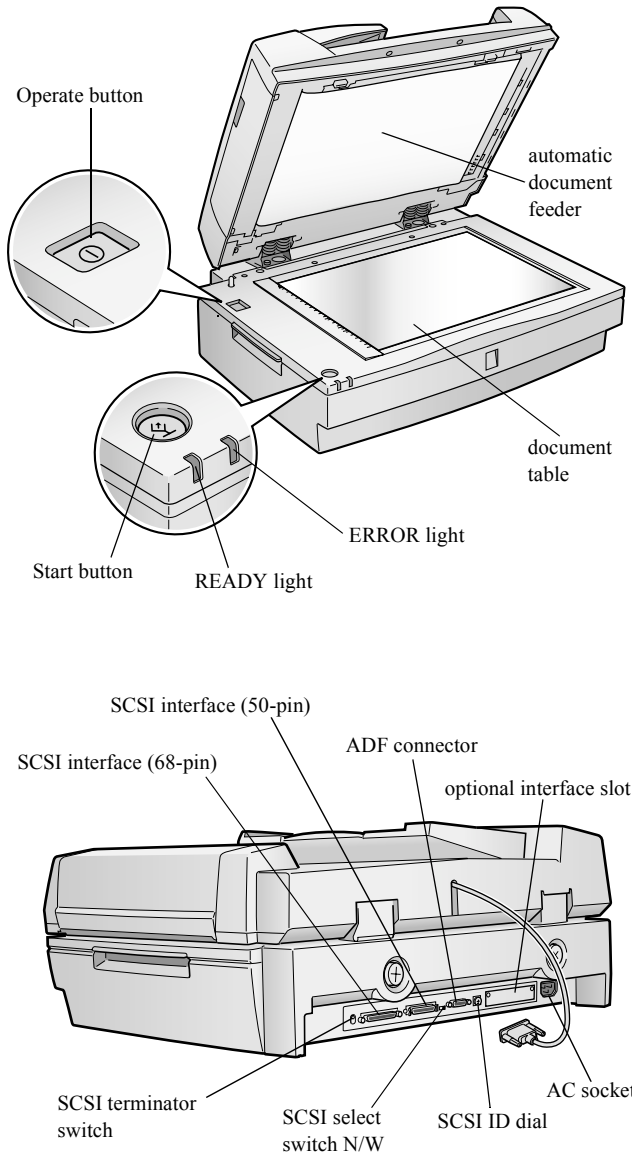


**Scanner Parts**



**Scanner Specifications**

**General**

Scanner type	Flatbed, color
Photoelectric device	Color CCD line sensor
Effective pixels	7020 × 10200 pixels at 600 dpi, 100% scaling
Color depth	36-bit internal/24-bit external

Grayscale depth	12-bit internal/8-bit external
Maximum document size	11.7 × 17.0 inches (297 × 432 mm) A3, Ledger, B4, Legal, A4, Letter, B5 or Executive, A5, or A6 (the reading area can be specified from your software)
Output resolution	50 to 4800 in 1 dpi increments
Maximum hardware resolution*	600 dpi (main scan) 1200 dpi with Micro Step Drive™ (sub scan)
* The maximum hardware resolution of 600 × 1200 dpi is achieved using EPSON's Micro Step Drive technology	
Speed (600 dpi, draft mode)	Color: 0.79 msec/line (approx.) Grayscale: 0.39 msec/line (approx.) Line Art: 0.39 msec/line (approx.)
Color separation	RGB color filters on CCD
Reading sequence	Monochrome: One-pass scanning Color byte sequence: One-pass scanning (R, G, B) Color line sequence: One-pass scanning (R, G, B)
Zoom	50 to 200% in 1% increments
Command level	ESC/I-B7, FS
Pixel depth	12 bits per pixel (12 bits per pixel input, 1 to 8 bits per pixel output)
Brightness	7 levels
Line art settings	Fixed threshold
Digital halftoning	4 dither patterns (A, B, C, and D) for bi-level and quad-level data (2 downloadable dither patterns)
Gamma correction	2 types for CRT display 3 types for printer 1 type user-defined (only available when using EPSON TWAIN HS)
Color correction	1 type for CRT display 3 types for printer (available in color byte sequence mode and color line sequence mode) 1 type user-defined (only available when using EPSON TWAIN HS)

## EPSON GT-30000

---

Interfaces	SCSI (micro DB 50-pin and 68-pin connectors) Optional IEEE 1394 I/F slot	240 V model	EMC: FCC part 15 subpart B class B CSA C108.8 class B
Light source lamp	Xenon gas cold cathode fluorescent		Safety: EN 60950 EMC: EN 550022 (CISPR Pub 22) class B AS/NZS 3548 class B
Reliability	600,000 cycles of carriage movement (main unit MCBF)		
Dimensions	Width: 25.9 inches (658 mm) Depth: 19.2 inches (488 mm) Height: 10 inches (254 mm)		
Weight (with ADF)	Approximately 66 lb (37.5 kg)		

### Electrical

Input voltage range	100 to 120 VAC ±10% 220 to 240 VAC ±10%
Rated frequency	50 to 60 Hz
Rated current	100 to 120 VAC: 1.0 A 220 to 240 VAC: 0.5 A
Power consumption (without IEEE 1394 scanner interface installed)	Operating: Approximately 65 W Approximately 90 W when using ADF Standby: Approximately 12 W

### Environmental

Temperature	Operating: 41 to 95 °F (5 to 35 °C) 50 to 89 °F (10 to 32 °C) when using ADF Storage: -13 to 140 °F (-25 to 60 °C)
Humidity (without condensation)	Operating: 10 to 80% Standby: 10 to 85%
Operating conditions proximity	Ordinary office or home conditions. Avoid dust, direct sunlight, and to strong light sources.

### Safety Approvals

120 V model	Safety: UL 1950 (+D3) CSA C22.2 No. 950 (+D3)
-------------	--

**SCSI Interface**

Interface type	SCSI 2 and SCSI 3	Humidity (without condensation)	Operating: 10 to 80% Standby: 10 to 85%
Logic level	TTL-compatible		
ID setting	Selectable from 0 to 7		
Terminator	Internal terminator (enable/disable switch selectable)		
Connector select switch	W: 68-pin connector N: 50-pin connector		
Connector type	Micro DB 50-pin connector Micro DB 68-pin wide connector		
Initialization methods	Hardware: Initialized when the scanner is turned on or the scanner receives a SCSI		
Reset	signal from the SCSI interface		
the	Software: Initialized when the software sends  Esc @ (initialize the scanner command), or the scanner receives a SCSI Bus Device message		

**IEEE 1394 Scanner Interface**

Interface type	IEEE 1394 compatible
Data transfer method serial	Half-duplex Data/Strobe differential serial
Synchronization method	Clock synchronization with DS-Link
Encoding/ decoding	DS-Link
Logic level	3.3 V
Compatible connectors	IEEE 1394-1995 compatible
Power class	Power class code 100 No power supply from external sources Fitted with a repeat function with bus power
Temperature	Operating: 41 to 95 °F (5 to 35 °C) Standby: -13 to 140 °F (-25 to 60 °C)

**Option Interface Connector**

Interface type	For use with the automatic document feeder (B813212)
Output voltage	21.6 to 26.4 VDC 4.75 to 5.25 VDC
Output current	0.6 A (24 V) 0.3 A (5 V)

**Automatic Document Feeder**

**General**

Paper input/output	Load face up; eject face down
Paper quantity total	100 pages (80 g/m <sup>2</sup> paper, maximum thickness under 0.48 inches [12 mm])
Reliability	100,000 sheets (load/eject MTBF)
Dimensions	Width: 23.8 inches (606 mm) Depth: 19.2 inches (488 mm) Height: 5.3 inches (134 mm)
Weight	Approximately 28.6 lb (13 kg)

**Electrical**

Input voltage	22.8 to 25.2 VDC 4.75 to 5.25 VDC
Input current	24 V: 1.5 A 5 V: 0.4 A

**Environmental**

Temperature	Operating: 41 to 95 °F (5 to 35 °C) Standby: -13 to 140 °F (-25 to 60 °C)
Humidity (without condensation)	Operating: 10 to 80% Standby: 10 to 85% or less

**Lights and Buttons**

The scanner has two indicator lights and two buttons on its control panel. Light status and button functions are described in the tables that follow.

*Scanner indicator lights*

Light	Light status	Scanner status
READY	○	Ready to scan images
	◐ (flashing)	Scanning is in progress or the scanner is being initialized
ERROR	○	An error occurred; see the following table for more information
	◐ (rapidly flashing)	

○ = on, ◐ = flashing

*Error conditions*

ERROR light	READY light	Error type
○	○	Command error: The scanner has received incorrect commands from your scanning software. Try rescanning the document.
◐	●	Interface error: Check that your scanner is securely connected to your computer, and then turn the scanner off and back on again.
◐	◐	Fatal error: Check that the transportation lock is released, and then turn the scanner off and on again. If this doesn't solve the problem, call your EPSON dealer.
●	○	Option error: There's a problem with an installed option (EPSON TWAIN will report the error condition). Check to make sure the automatic document feeder is flat against the document table. Check that your option is securely connected to the option connector at the back of the scanner. Finally, check that the automatic document feeder isn't out of paper and doesn't have a paper jam. If these suggestions don't solve the problem, call your EPSON dealer.

○ = on, ● = off, ◐ = flashing

*Scanner buttons*

Button	Function
⏻ Operate	Turns the scanner on and off.
Start	Automatically launches a Start button-compatible application. You must set up your scanner software and a compatible application to use this button. If you installed NewSoft™ Presto!™ PageManager, it's automatically assigned to the Start button. You can set up Presto! PageManager to scan your image automatically and send it directly to another application or a peripheral device, such as a printer.

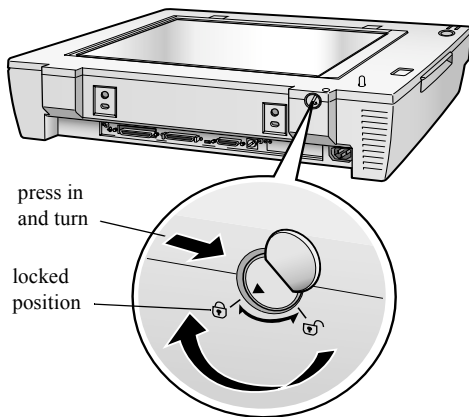
## Installing the Scanner

Unlock the carriage before installing the Automatic Document Feeder by turning the transportation lock counterclockwise.

## Transporting the Scanner

When you transport the scanner a long distance or store it for an extended time, follow the steps below to secure the carriage.

1. Turn on the scanner and wait until the carriage moves to the home position (the left side).
2. Turn off the scanner.
3. Press in and turn the transportation lock clockwise to the locked position to secure the carriage.



If the scanner is inoperable, the carriage may not automatically return to the home position. If it doesn't, raise the right side of the scanner and hold it up until the carriage comes to rest at the left side. Then turn the transportation lock to the locked position.

## Scanning with EPSON TWAIN HS

Follow the steps below to scan a document using EPSON TWAIN HS or EPSON TWAIN HS Network.

1. Start your host application (for example, Presto! PageManager or any other application that supports EPSON TWAIN HS).
2. Select your scanner source. (Unless you change your source, you only need to do this step once.)

For example, if you're running Presto! PageManager as your host application, click File, then Select Source. In the Select Source dialog box, select EPSON TWAIN HS. Then click Select.

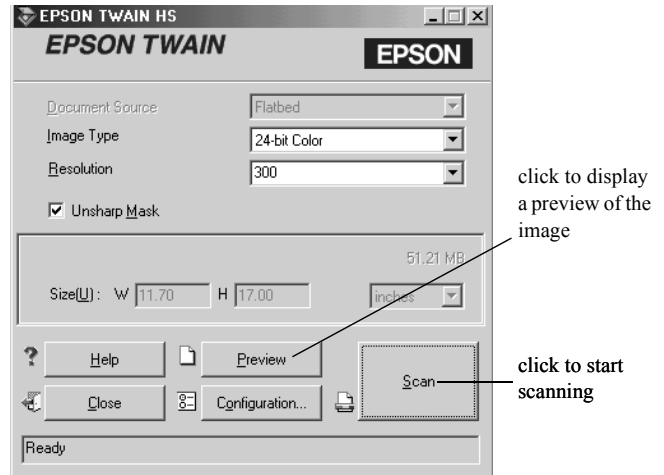
If you're accessing a network scanner connected to another computer, select EPSON TWAIN HS Network as your input source and click OK.



You can't select EPSON TWAIN HS as your scanner source if you're using a network scanner and EPSON Scan Server is running. EPSON Scan Server disables EPSON TWAIN HS.

For example, choose Acquire from Presto! PageManager's File menu.

The EPSON TWAIN HS main window appears.



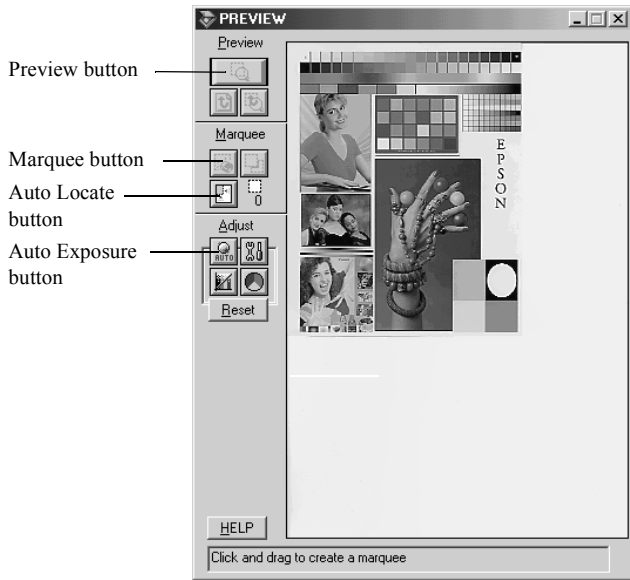
3. Choose the Document Source and Image Type.

For example, if you're scanning a photograph, select Flatbed as your Document Source and 24-bit Color (Std) as your Image Type.


When using the ADF, choose ADF-Single-sided or ADF-Double-sided as your Document Source.


4. Click the Preview button. You see a preview of your scan in the window that opens.

If you are scanning multiple pages using the ADF, you do not need to Preview the document unless you want to scan only a portion of a document.



5. Choose your scan settings.

Click the  Auto Locate button to automatically define the scan area around the edges of your image. You can also adjust the scan area by positioning the mouse pointer over the dotted line around the marquee's edge and dragging the box to resize the marquee.

Click the  Auto Exposure button to automatically set the highlight and shadow exposures.

**NOTE** Generally it's a good idea to use the Auto Exposure button to obtain the best settings for your scan. See your electronic *EPSON GT-30000 Reference Guide* for more information about choosing settings.

If you need to remove color cast from your image, use the Gray Balance Intensity feature.

6. When you've finished making adjustments, click the Scan button.

The READY light on the front of the scanner flashes while it's scanning. In a few moments, a scanned image is imported into your host application's window.

(If the READY light continues to blink, it may indicate an error condition. See page 4 for more information.)

7. Click Close to close the EPSON TWAIN HS or EPSON TWAIN HS Network window and return to your application.

8. If you want, save your image using the Save or Save As options from the File menu of your host application.

## Using a Network Scanner

Network scanning involves the following steps:


- Two or more computers must be connected on the same network segment running TCP/IP protocol.
- The scanner server must be turned on and running EPSON Scan Server.
- From the client computer, start EPSON TWAIN HS Network to establish a connection to the scanner server. Only one client computer at a time can connect to the scanner server. (See "Starting EPSON TWAIN HS Network" on page 7 for instructions.)
- Choose your settings, and then place your document on the scanner or in the automatic document feeder.
- Start the scan. Although this can be done from EPSON TWAIN HS Network on the client computer, it may be more convenient to press the scanner's Start button or to start the scan from the scanner server. A progress meter appears on both the scanner server and client computer as the image is pre-scanned, then scanned.
- If you want to scan more than one image, place your second image on the document table and press the scanner's Start button again. Repeat this step for every image you want to scan. (The settings you chose for the first image apply to these images too.)

**NOTE** The Start button is only available when you use EPSON TWAIN HS to access a scanner connected to your computer and you are running Windows Me, Windows 2000, or Windows 98. If you are running Windows 95 or Windows NT, the Start button is disabled.

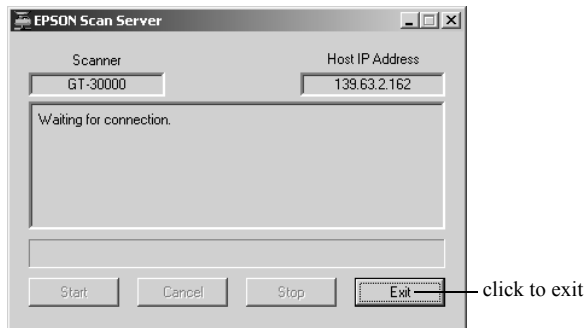
- When you return to the client computer, your scanned images appear in the host application's window. Close EPSON TWAIN HS Network to end your connection to the scanner server and allow other client computers to use the scanner.

**NOTE** When you press the Start button, some applications automatically close the client computer's connection to the scanner server when the scan is finished. You can't use the Start button to scan multiple images if you're using these applications.

## Starting EPSON Scan Server

EPSON Scan Server starts automatically whenever the scanner server is turned on. When EPSON Scan Server is running, you'll see either the EPSON Scan Server dialog box, or the EPSON Scan Server icon  on the Windows taskbar. If you need to start EPSON Scan Server manually, click Start, Programs, EPSON Scan Server, and then select EPSON Scan Server.

You can quit EPSON Scan Server at any time. Just click the Exit button on the EPSON Scan Server dialog box.



Before you exit, make sure no client computers are trying to use the scanner. Don't exit if the status area of the EPSON Scan Server dialog box indicates that you are connecting to a client. Wait until you see the message Waiting for connection.

If you installed EPSON TWAIN HS on the scanner server so that you could make a direct connection to the scanner, remember that you must exit EPSON Scan Server to use EPSON TWAIN HS. EPSON Scan Server disables EPSON TWAIN HS.

## Starting EPSON TWAIN HS Network

You connect to the scanner server by starting EPSON TWAIN HS Network on your client computer. Follow these steps:

1. Start your host application.
2. Select EPSON TWAIN HS Network as your source, or scanner driver. (You only need to do this step once.)

For example, if you're using Presto! PageManager for EPSON as your host application, choose Select Source from the File menu. In the Select Source window, choose EPSON TWAIN HS Network and click Select.



The command you choose from the File menu depends on the host application. With some applications, for example, you might choose Import or Select TWAIN\_32 Source.

3. Start EPSON TWAIN HS Network.

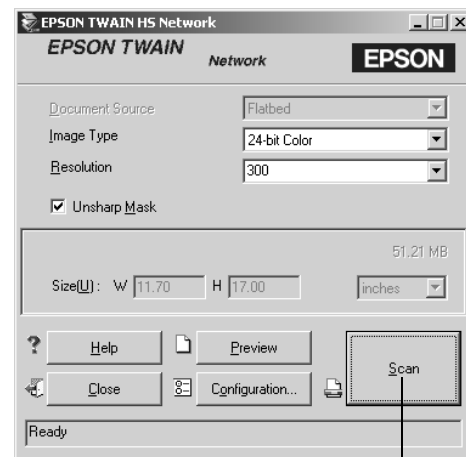
If your host application is Presto! PageManager for EPSON, choose Acquire from the File menu. When EPSON TWAIN HS Network starts, the EPSON TWAIN HS Network main menu appears and you connect to the scanner server.

Since the settings and controls for EPSON TWAIN HS Network are the same as those for EPSON TWAIN HS, see "Scanning with EPSON TWAIN HS" on page 5 for general scanning instructions. For more detailed information about settings, see the *EPSON GT-30000 Reference Guide* on your scanner software CD-ROM.

## Starting a Scan

You can start a scan on your network scanner in several ways. However, the client computer must be running EPSON TWAIN HS Network to connect to the scanner server.

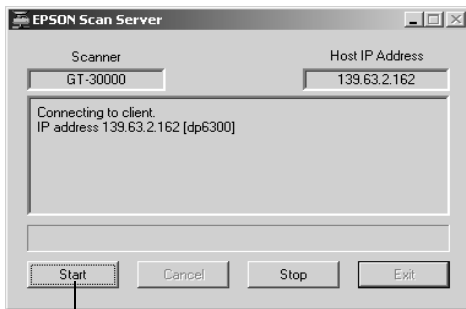
- You can start EPSON TWAIN HS Network on the client computer from a host application, make your scan settings, and click the Scan button on the EPSON TWAIN HS Network main window. The scanned image is imported into your host application's window.



click to start a scan from the scanner server

- You can press the Start button on the scanner to send the scanned image to the client computer that is currently connected to the scanner server.

- ❑ You can click the Start button on the EPSON Scan Server dialog box to send the scanned image to the client computer currently connected to the scanner server.



click to start a scan from  
the scanner server

### Stopping a Scan in Progress

You can stop a scan in progress from either the client computer or the scanner server.

- ❑ To cancel a scan from the client computer, click the Cancel button on the Progress bar.
- ❑ To cancel from the scanner server, click the Cancel button at the bottom of the EPSON Scan Server dialog box.
- ❑ To break the connection between the client computer and the scanner server, click the Stop button on the EPSON Scan Server dialog box. This closes EPSON TWAIN HS Network on the client computer and allows other client computers to connect to the scanner server.

---

### Related Documentation

---

CPD-11739	EPSON GT-30000 User's Guide EPSON GT-30000 Reference Guide (HTML) ISIS User's Guide (PDF)
TM-GT30000	EPSON GT-30000 Service Manual
PL-GT30000	EPSON GT-30000 Parts Price List
TM-B813212	Automatic Document Feeder Service Manual
PL-B813212	Automatic Document Feeder Parts Price List