

**EPSON®**

COLOR SCANNER

**GT-30000**

**Color Scanner  
User's Guide**

## Copyright Notice

All rights reserved. No part of this publication may be reproduced, stored in a retrieval system, or transmitted in any form or by any means, electronic, mechanical, photocopying, recording, or otherwise, without the prior written permission of SEIKO EPSON CORPORATION. The information contained herein is designed only for use with this EPSON scanner. EPSON is not responsible for any use of this information as applied to other scanners.

Neither SEIKO EPSON CORPORATION nor its affiliates shall be liable to the purchaser of this product or third parties for damages, losses, costs, or expenses incurred by purchaser or third parties as a result of: accident, misuse, or abuse of this product or unauthorized modifications, repairs, or alterations to this product, or (excluding the U.S.) failure to strictly comply with SEIKO EPSON CORPORATION's operating and maintenance instructions.

SEIKO EPSON CORPORATION shall not be liable for any damages or problems arising from the use of any options or any consumable products other than those designated as Original EPSON Products or EPSON Approved Products by SEIKO EPSON CORPORATION.

## A Note Concerning Responsible Use of Copyrighted Materials

Digital cameras and scanners, like photocopiers and conventional cameras, can be misused by improper copying of copyrighted material. While some countries' laws permit limited copying of copyrighted material in certain circumstances, those circumstances may not be as broad as some people assume. EPSON encourages each user to be responsible and respectful of the copyright laws when using digital cameras and scanners.

## Trademarks

EPSON and EPSON Stylus are registered trademarks of SEIKO EPSON CORPORATION. EPSON Store and Micro Step Drive are trademarks, and ColorTrue is a registered trademark of Epson America, Inc.

General Notice: Other product names used herein are for identification purposes only and may be trademarks of their respective owners. EPSON disclaims any and all rights in those marks.



# Contents

<b>Welcome!</b>	<b>1</b>
About Your Scanner	1
About Your Software	2
Getting More Information	3
Warnings, Cautions, and Notes	4
Reading the Online Reference Guide	4
Reading Your Other Electronic Manuals	6
Registering	8
<b>Chapter 1     Setting Up Your Scanner</b>	<b>9</b>
Unpacking Your Scanner	10
Choosing a Good Place for Your Scanner	11
Identifying Scanner Parts	12
Unlocking the Scanner	13
Installing the Automatic Document Feeder	14
Testing Your Scanner's Operation	16
Connecting the Scanner to Your Computer	17
Connecting to a SCSI Interface	17
Connecting to an IEEE 1394 Scanner Interface	21
<b>Chapter 2     Installing the Software</b>	<b>23</b>
Installing the Scanner Software	23
Installing the Software for Windows Me	24
Installing the Software for Windows 2000	30
Installing the Software for Windows 98	36
Installing the Software for Windows 95	41
Installing the Software for Windows NT 4.0	46

Installing Additional Software	49
Installing the ISIS Driver	49
Installing PixTools QuickScan	50
Installing Presto! PageManager	52
<b>Chapter 3    How to Scan</b>	<b>53</b>
Overview	53
Selecting Your Scanner Source	53
Selecting Resolution	54
Scanning Color Images	55
Scaling (Resizing) Images	55
Batch Scanning	55
Step-by-Step Scanning Instructions	56
Loading the Automatic Document Feeder	56
Placing a Single Original Document	57
Scanning with EPSON TWAIN HS	58
Using the ☞ Start Button	60
Setting Up the ☞ Start Button	60
<b>Chapter 4    Network Scanning</b>	<b>63</b>
Setting Up the Scanner Server	65
Installing the Scanner Server Software for Windows Me	66
Installing the Scanner Server Software for Windows 2000	71
Installing the Scanner Server Software for Windows 98	76
Installing the Scanner Server Software for Windows 95	82
Installing the Scanner Server Software for Windows NT 4.0	87
Changing the Scanner Server Start Up Mode	90
Setting Up Client Computers	91
Installing EPSON TWAIN HS Network	91

Using a Network Scanner	<b>95</b>
Starting EPSON Scan Server	<b>96</b>
Starting EPSON TWAIN HS Network	<b>97</b>
Starting a Scan	<b>98</b>
Stopping a Scan in Progress	<b>99</b>
<b>Chapter 5</b>	
<b>Maintaining and Transporting Your Scanner</b>	<b>101</b>
Cleaning the Scanner	<b>101</b>
Replacing the Fluorescent Lamp	<b>102</b>
Transporting the Scanner	<b>102</b>
<b>Chapter 6</b>	
<b>Solving Problems</b>	<b>103</b>
Scanner Lights	<b>103</b>
Problems and Solutions	<b>105</b>
Setup Problems	<b>105</b>
Scanner Problems	<b>106</b>
Software Problems	<b>108</b>
Scanning Problems	<b>110</b>
Uninstalling the Scanner Software	<b>114</b>
Uninstalling EPSON TWAIN HS	<b>114</b>
Uninstalling EPSON TWAIN HS Network	<b>115</b>
Uninstalling EPSON Scan Server	<b>115</b>
Solving Problems with the Automatic Document Feeder	<b>116</b>
Fixing Paper Jams	<b>116</b>
Changing the Document Feed Speed	<b>117</b>
Where To Get Help	<b>118</b>
EPSON Technical Support	<b>118</b>
Software Technical Support	<b>119</b>

<b>Appendix A Installing the TCP/IP Protocol</b>	<b>121</b>
Installing the TCP/IP Protocol on Windows Me and Windows 2000	<b>122</b>
Installing the TCP/IP Protocol on Windows 98 and Windows 95	<b>123</b>
Assigning an IP Address for Windows 95 and Windows 98 (First Release)	<b>124</b>
Installing the TCP/IP Protocol on Windows NT 4.0	<b>126</b>
Assigning an IP Address on Windows NT 4.0	<b>127</b>
<b>Appendix B Specifications</b>	<b>129</b>
<b>Appendix C Notices</b>	<b>133</b>
System Requirements	<b>133</b>
Important Safety Instructions	<b>134</b>
Declaration of Conformity	<b>135</b>
FCC Compliance Statement	<b>136</b>
ENERGY STAR Compliance	<b>137</b>
Warranty	<b>137</b>
<b>Index</b>	<b>139</b>

# Welcome!

The EPSON® GT-30000 is a 36-bit, large-format professional scanner that delivers superior results and versatility for both departments and busy workgroups. Using EPSON's ColorTrue® Imaging System, the scanner captures text and images with amazing detail and accurate colors. Its 600 × 1200 dpi optical resolution and 11.7 × 17-inch scan bed let you quickly capture incredibly sharp images from practically any size source document.

---

## About Your Scanner

Your EPSON GT-30000 scanner includes these features:

- 36-bit color depth and 600 × 1200 optical resolution lets you capture crisp, clean text and high-quality images with millions of colors and thousands of shades of gray.
- Speeds through documents with accuracy and detail: letter-sized monochrome up to 30 ppm, color up to 15 ppm (landscape at 300 dpi, draft mode).
- Large scan bed and auto document feeder let you quickly scan anything from a two-page book spread to a double-sided, 100-page document.
- Automatic document size recognition with EPSON TWAIN eliminates the need to preset document settings prior to each scan.
- EPSON scanner software lets stand-alone users or network clients control scanning directly from their workstation.

---

# About Your Software

The EPSON GT-30000 comes with these applications:



### *EPSON TWAIN HS*

General-purpose driver for scanning photographs, artwork, or text for Optical Character Recognition (OCR). Includes automatic document size recognition.

### *EPSON TWAIN HS Network and EPSON Scan Server*

Ideal general-purpose drivers for network scanning from hundreds of applications.



### *ISIS Driver*

The Image and Scanner Interface Specification (ISIS) is a flexible, modular standard for acquiring, viewing, converting, printing, and storing document images.



### *PixTools® QuickScan™*

A high-performance utility that provides an integrated image acquisition environment allowing you to scan, view, print, annotate, store, and perform image processing on documents.



### *NewSoft™ Presto!™ PageManager for EPSON*

After you've scanned your paper documents, use this leading document management software to organize, file, edit, copy, fax, and e-mail them from one convenient screen.



### *Adobe® Acrobat® Reader*

Lets you read the on-screen manuals for your applications and any other files you may have in Portable Document Format (PDF).



---


# Getting More Information

There are several ways to learn more about your EPSON GT-30000. Here's where to look for help:

- **EPSON GT-30000 Reference Guide**

Provides detailed information about EPSON TWAIN HS, including additional troubleshooting tips. You must have a web browser (Netscape Navigator® or Microsoft® Internet Explorer, versions 3.0 or later) on your computer to read this guide. See page 4 for instructions on viewing your *Reference Guide*.

- **On-Screen Help**

Most of the applications that come with your scanner include on-screen help. For EPSON TWAIN HS, just click the  button or select **Help** from the menu.

- **Electronic Documents**

Several of the applications that came with your scanner include electronic manuals in the Adobe Acrobat PDF format. You'll find electronic user's guides in the **Manuals** folder on the EPSON GT-30000 Scanning Tools CD-ROM, as well as in the product folders. See page 6 for instructions on locating and viewing your Acrobat manuals.

If none of these sources answers your questions, please see "Where To Get Help" on page 118.

## Warnings, Cautions, and Notes

Please follow these guidelines as you read your documentation:



Warnings must be followed carefully to avoid bodily injury.



Cautions must be observed to avoid damage to your equipment.



Notes contain important information about your scanner.



Tips offer hints for great scanning.

## Reading the Online Reference Guide

The electronic *EPSON GT-30000 Reference Guide* is on your EPSON GT-30000 Scanner Software CD-ROM. You can view it from the CD-ROM or copy it to your hard drive and view it from there. You must have a web browser (for example, Netscape Navigator or Internet Explorer, versions 3.0 or later).

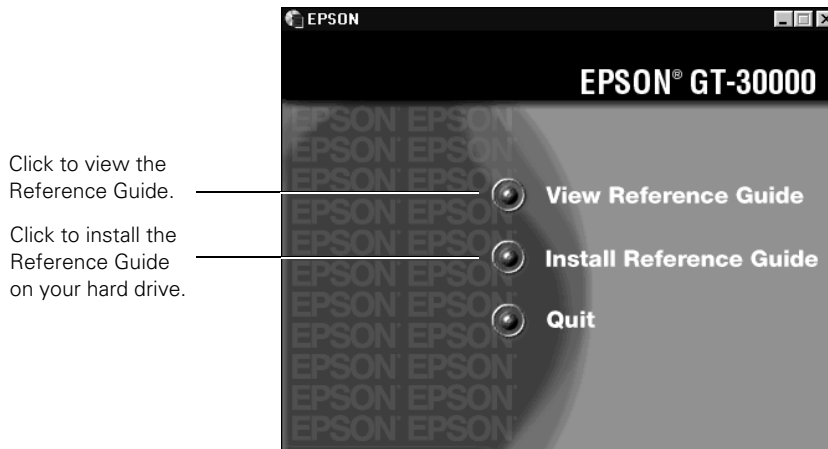


If you copy the manual to your hard drive, you can read it anytime. After you copy the manual, just click Start, point to Programs, then EPSON, and select EPSON GT-30000 Reference Guide.

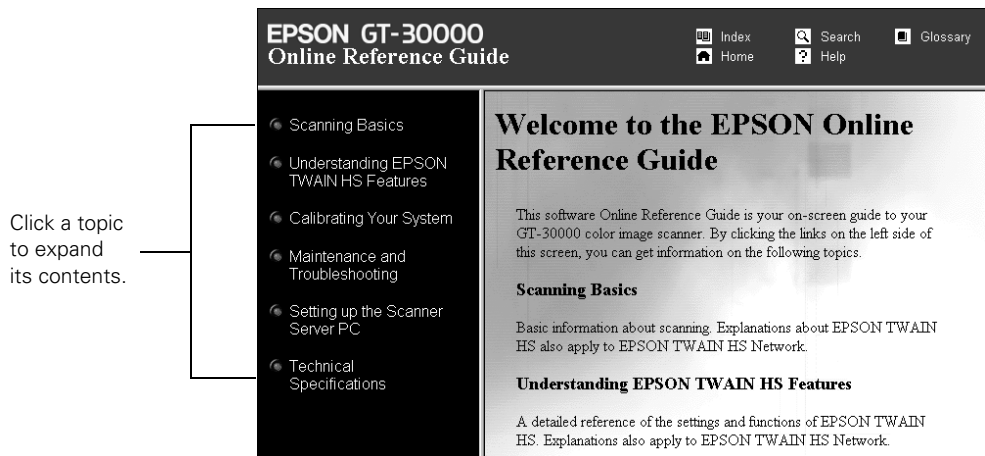
Follow these steps to view the manual:

1. Insert your scanner software CD-ROM. If the Select Language screen doesn't appear, double-click the **My Computer** icon on your desktop. Then double-click the **Epson CD-ROM** icon.
2. Make sure **English** is selected and click **OK**.
3. When you see the EPSON Software Setup screen, click the **Browse this CD** button.

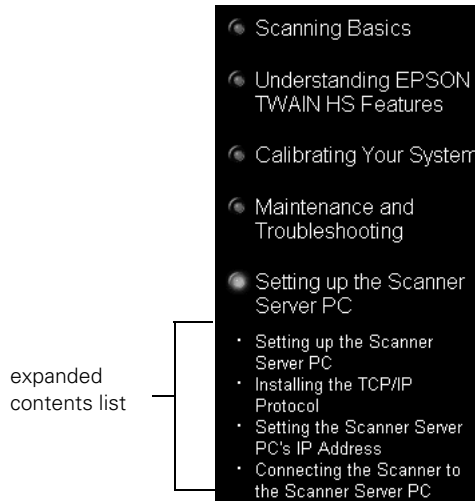
4. Open the **Manuals** folder, then double-click the **GT30000.exe** icon. The Reference Guide window opens:



5. Click **View Reference Guide**. Your browser opens and you see this window:



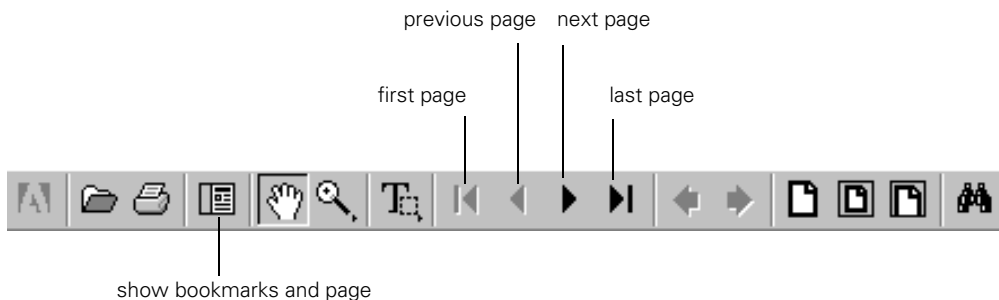
- Click one of the topics on the left to expand its contents. Then click the subtopic you want to view.



## ***Reading Your Other Electronic Manuals***

To read other PDF manuals on your CD-ROM, you'll use Acrobat Reader. If Acrobat Reader is not already installed on your computer, you can install it with the other scanner software. See the software installation instructions for your system in Chapter 1, "Setting Up Your Scanner."

When you open an electronic manual, you'll see this toolbar:



This is the toolbar for Acrobat Reader 4.05. The toolbar for Acrobat Reader 3.0 looks slightly different.

With Acrobat Reader, you have several ways to navigate through text:

- Click on hot topics, which are usually underlined or displayed in a different color. To find out if a topic is hot, move your cursor over it. If the cursor turns into a pointing hand, the topic is linked—you can jump to it by clicking once.
- Use the bookmark section of the left side of the screen to move quickly to the topic of your choice. Click the **Show/Hide Navigation Pane** icon on the toolbar to see the bookmark section, if the manual has bookmarks. Some manuals only have a table of contents, but you can also use this to navigate the manual if the topics are linked.
- Use the arrow buttons in the toolbar or the vertical scroll bar on the right side of the document to move through the manual. (The box to the left of the scroll bar displays the current page number.)

For more information, see your Acrobat Reader online guide.

Locate your PDF manuals as follows:

- *ISIS User's Guide*—Insert your scanner software CD-ROM. When the EPSON Software Setup screen appears, click **Browse this CD**. Open the **ISIS** folder, then the **English** folder, then double-click **GT30000.pdf**.
- *Presto! PageManager*—Click **Start, Programs, Presto! PageManager for EPSON**, and select **PageManager User's Manual**.
- *Acrobat Reader*—Select **Reader Guide** from the Acrobat Reader Help menu.



You can download and view a PDF version of the GT-30000 User's Guide from the EPSON support web site at <http://support.epson.com>.

PixTools QuickScan includes on-screen help. To access it, click **Start, Programs, PixTools Products, Documentation**, and select **QuickScan Help**.

---

# Registering

Please take a minute to complete the electronic registration form which appears at the end of the software installation process (see “Chapter 2, Installing the Software”).

Registering enables you to receive special information on options, new products, and software upgrades. You’ll get immediate attention if you have a problem with your scanner.

# Chapter 1

## Setting Up Your Scanner

Setting up your scanner is easy—just follow the steps in this chapter in the order listed below.

1. Unpack and choose a good place for the scanner.
2. Unlock the scanner.
3. Install the automatic document feeder.
4. Test the scanner.
5. Set the SCSI ID number and terminator switch (SCSI connections only).
6. Connect the scanner to your computer.

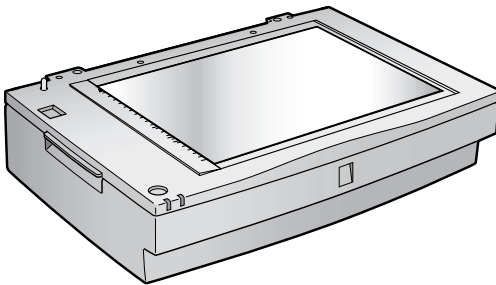
# Unpacking Your Scanner

Remove the automatic document feeder and scanner from the box, then remove the packing material from your scanner. Save the packaging in case you need it later.

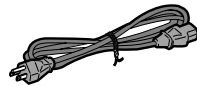


The scanner and automatic document feeder are large and heavy, so you may need to have someone help you unpack and lift them.

Along with this guide, your EPSON GT-30000 comes with these items:



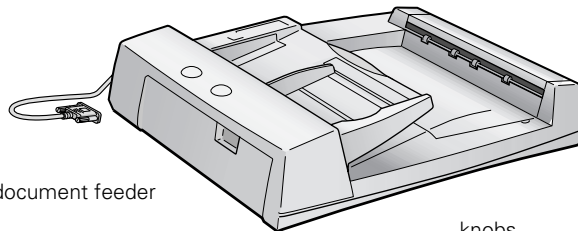
EPSON GT-30000



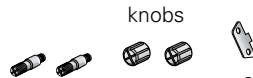
power cable



EPSON GT-30000 Scanner  
Software CD-ROM



automatic document feeder



installation screws

knobs

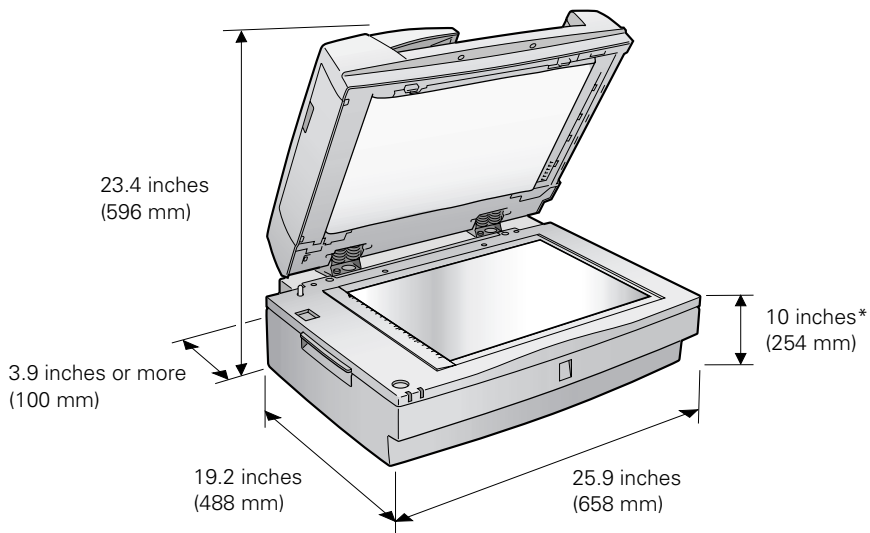
screwdriver



## Choosing a Good Place for Your Scanner

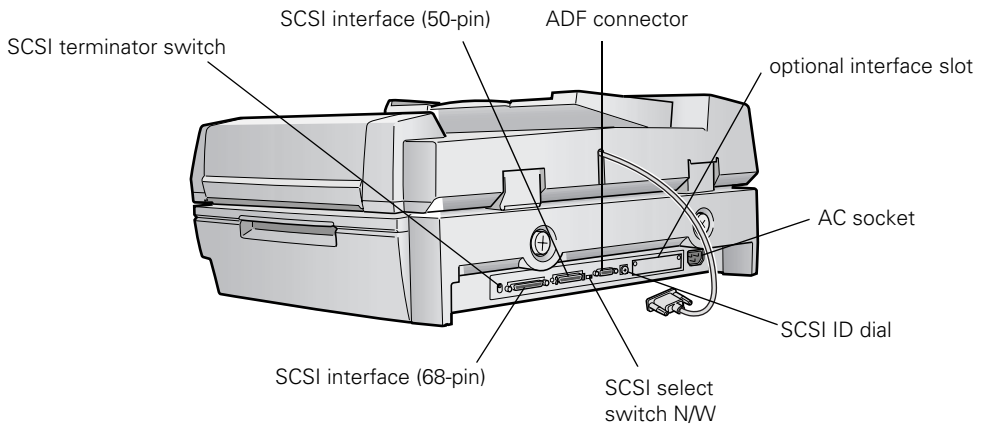
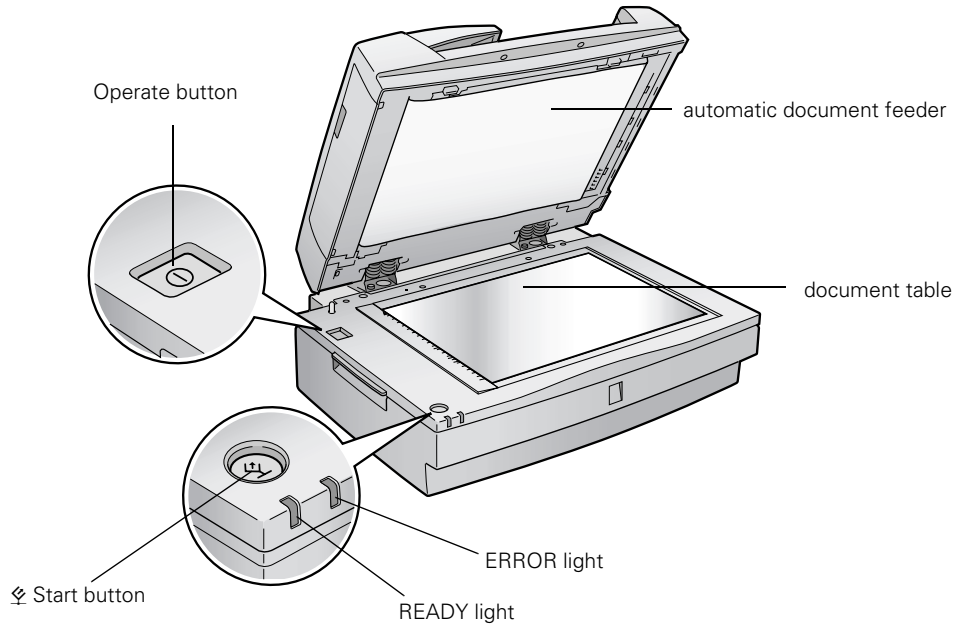
When deciding where to place the scanner, follow these guidelines:

- Place the scanner on a flat, stable surface. If the scanner is tilted, it can't operate properly.
- Make sure to place the scanner where you can easily unplug the power cord, near a grounded wall outlet, and where your cable can reach your computer.
- Keep the scanner away from direct sunlight and strong light sources.
- Avoid places subject to shocks and vibrations, or high or rapidly changing temperatures and humidity.
- Make sure there's enough room behind the scanner for the cables, and above the scanner so you can fully raise the document cover.



\* When automatic document feeder is closed.

# Identifying Scanner Parts

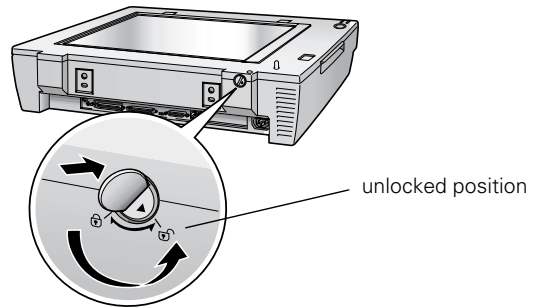


---

## Unlocking the Scanner

Before installing the automatic document feeder and connecting the scanner to a power source, you must release the transportation lock on the back of the scanner.

Use a coin or large flat-head screwdriver to turn the transportation lock button counterclockwise to the unlocked position, as shown.



Always lock the transportation lock before moving the scanner. Whenever the transportation lock is locked, the scanner lamp must be in the home position (on the left side of the scanner). See “Transporting the Scanner” on page 102 for more information.

---

# Installing the Automatic Document Feeder

The automatic document feeder (ADF) automatically loads multi-page documents into your scanner.

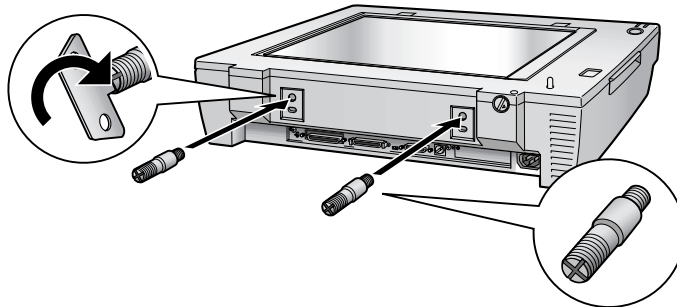


The ADF is large and heavy. Clear a wide space around the scanner before installing the ADF. You may need to have someone help you unpack and lift it.

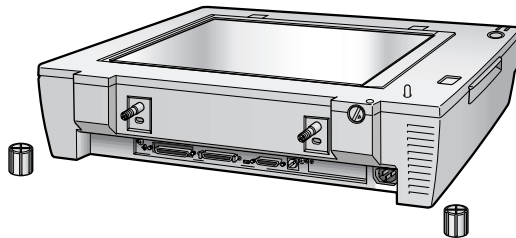
Make sure you have released the transportation lock before installing the ADF. For details, refer to page 13.

To install the ADF:

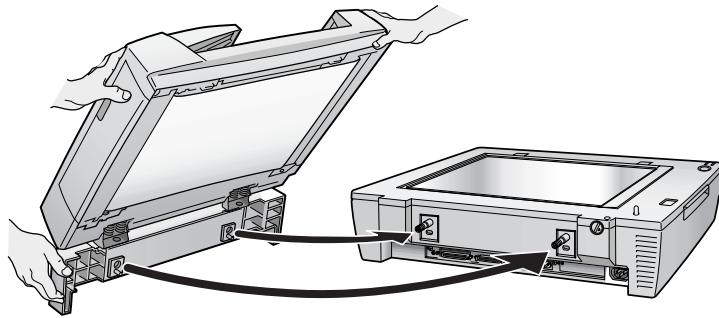
1. Make sure your scanner is turned off, then unplug the scanner's power and interface cables, if necessary.
2. Insert the installation screws that came with the ADF into the holes in the back of the scanner and secure them with the enclosed screwdriver tool, as shown below.



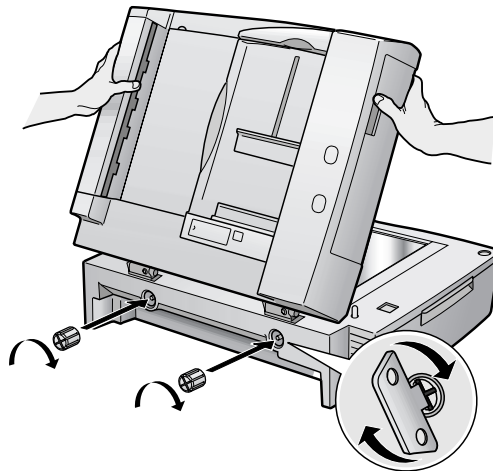
3. Place the two knobs included with the ADF beside the scanner.



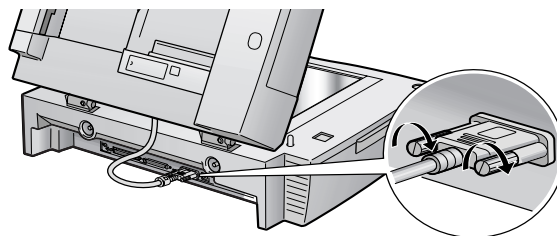
- Slide the ADF onto the scanner, lining up the screws with the holes as shown.



- Twist the knobs onto the ends of the screws and tighten them using the screwdriver tool.



- Attach the ADF's connector to the scanner's option interface. Then tighten the connector screws.



- Close the ADF.

---

# Testing Your Scanner's Operation

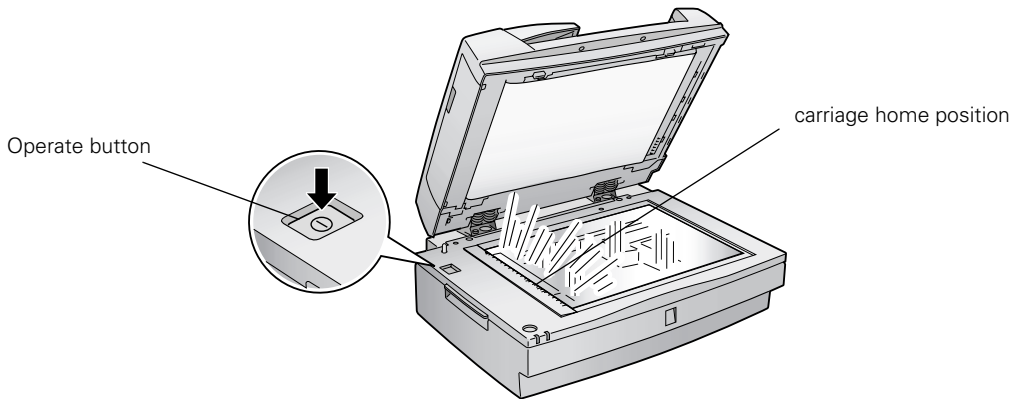
To make sure your scanner is working properly, it's a good idea to turn it on before you connect it to your computer.



The scanner's voltage cannot be changed. If the label on the back of the scanner does not display the correct voltage for your area, contact your dealer. Do not plug in the power cord.

1. Plug the scanner's power cord into a grounded electrical outlet. Then open the ADF so you can see the operation of the carriage.
2. Press the **Operate** button to turn on the scanner.

The **READY** light on the scanner's front panel flashes, and the scanner's carriage moves forward, then back. The **READY** light stays on when the scanner is ready to scan.



If you turn off the scanner, wait at least 10 seconds before turning it back on. Rapidly turning the scanner on and off can damage the scanner.

---

# Connecting the Scanner to Your Computer

You can connect the scanner to your computer in one of the following ways:

## ■ SCSI

If you have a compatible PCI SCSI/SCSI 2 adapter board, or your computer has an ASPI-compliant SCSI 2 board (Adaptec® boards are recommended), you can connect the scanner with a SCSI 2 cable (micro DB 50-pin connector) not more than 9.8 feet (3 meters) long. If you want to use the 68-pin connector, you will need a SCSI 3 cable and SCSI ultra-wide 68-pin host adapter board.

## ■ IEEE 1394

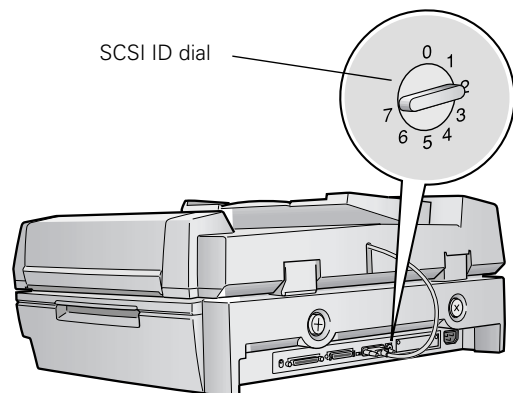
If you have purchased the optional IEEE 1394 scanner interface card, you can connect the scanner to your PC with the IEEE 1394 cable. Your PC must have an OHCI compliant port or card, and must be running a pre-installed version of Windows Me or Windows 2000. For installation instructions, see page 21.

## ***Connecting to a SCSI Interface***

Before you connect the scanner, you must have an ASPI-compliant SCSI 2 interface board installed in your computer. Some computers come with a SCSI 2 board preinstalled; check your computer documentation.

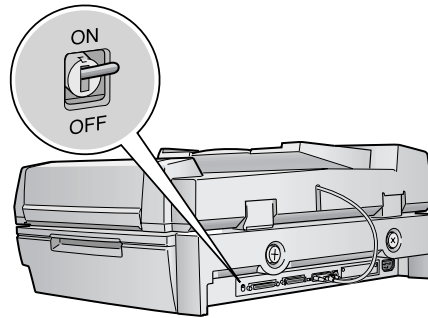
You may need to change the scanner's SCSI ID setting before you connect it to your computer. The scanner's SCSI ID number default setting is 2. If you need to change this number, turn the SCSI ID dial on the back panel. Be sure to choose a unique number that doesn't conflict with the ID number of other SCSI devices.

Don't use SCSI ID 7, which is usually reserved for the SCSI interface in the computer. SCSI ID 0 and 1 are also not recommended, as these may be used for the hard disk.

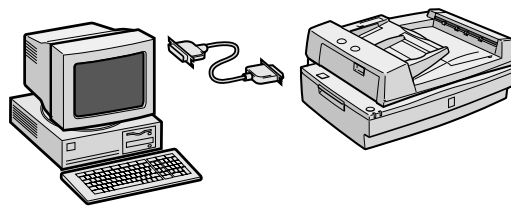


## Setting the SCSI Terminator

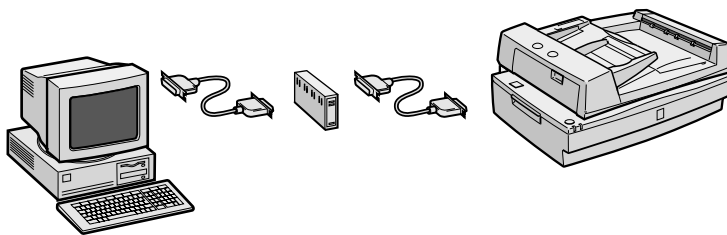
The scanner's SCSI terminator is built-in, with a switch to turn it on or off on the scanner's back panel.



If the scanner is your only SCSI device, leave the terminator turned **ON** (the default setting).

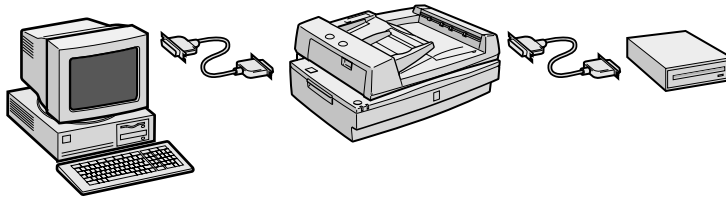


If the scanner is the last device in the chain, leave the terminator turned **ON**.





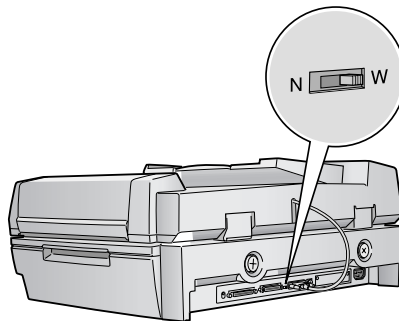
If the scanner is in the middle of a chain, turn the switch **OFF**.



## ***Setting the Select Switch***

The scanner has two SCSI connectors: one for a 68-pin SCSI cable and the other for a 50-pin SCSI cable. You may need to change the select switch setting depending on the SCSI card and cable you are using in your computer.

If you are using a 50-pin host adapter and SCSI cable connection anywhere on the bus between the host adapter and the scanner, use the **N** setting. Use the **W** setting for 68-pin SCSI ultra-wide host adapter and cable connections.

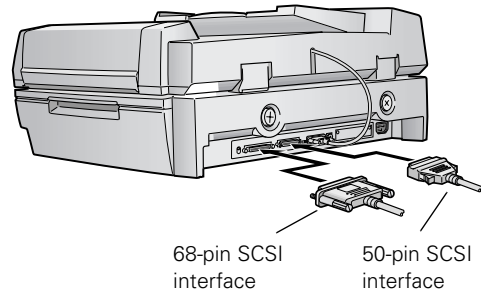


## Connecting the SCSI Cable to Your Computer

To connect the SCSI cable to your computer, follow these steps:

1. Make sure your scanner, computer, and any SCSI devices connected to your computer are turned off.
2. Connect the scanner to your computer using a suitable SCSI cable.

Squeeze the lock releases on the lock connector end of the SCSI cable and plug the cable into the appropriate SCSI connector on the back of the scanner. The cable is secure when both connector locks snap in.



3. Connect the pin end of the SCSI cable to the SCSI port on your computer or another SCSI device in the chain and tighten the screws to secure the cable.



Whether you're connecting the scanner directly to your computer or connecting multiple SCSI devices, the total length of the SCSI bus (cables) must not exceed 9.8 feet (3 meters); otherwise the system may not work properly.

Don't use an external terminator.

4. Plug in the power cables for your computer, scanner, and other external SCSI devices.

Always turn on your scanner first. Otherwise, the computer may not recognize your EPSON scanner when you install your software.

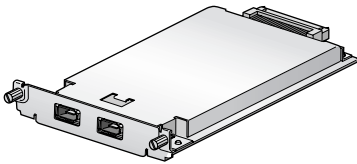
## Connecting to an IEEE 1394 Scanner Interface

If you purchased the optional IEEE 1394 scanner interface card (B808342), follow the instructions in this section to install the interface card in your scanner and connect the scanner to your computer.

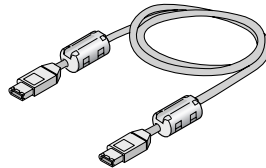


You can purchase genuine EPSON supplies and accessories from the EPSON Store™ at (800) 873-7766, or visit [www.epsonstore.com](http://www.epsonstore.com) (U.S. sales only). In Canada, please call (800) 873-7766 for dealer referral.

To use the IEEE 1394 scanner interface card, your PC must have an OHCI compliant port or card, and must be running a pre-installed version of Windows Me or Windows 2000.



IEEE 1394 Scanner Interface Card

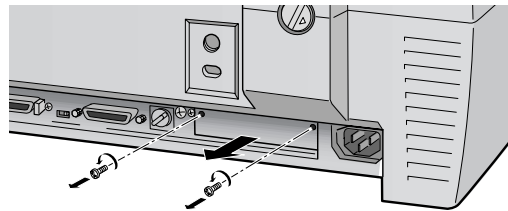


IEEE 1394 Scanner Interface Card Cable

## Installing the IEEE 1394 Card in Your Scanner

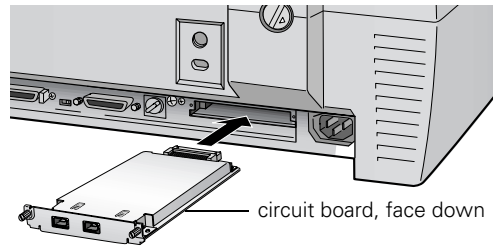
Before you begin, turn off the scanner and disconnect the power cord and any cables.

1. Remove the two screws securing the shield plate to the scanner's optional interface slot, and then remove the plate. Put the screws in a safe place in case you want to reinstall the shield plate later.



Static electricity can damage electronic components like the IEEE 1394 scanner interface card. To discharge static electricity, touch the scanner's metal frame before handling the card.

2. Turn the card over so that the circuit board side is facing down, and insert it in the optional interface slot. Push gently until the card is firmly seated in the expansion slot inside the optional interface slot.
3. Tighten the retaining screws and reconnect the scanner's cables.



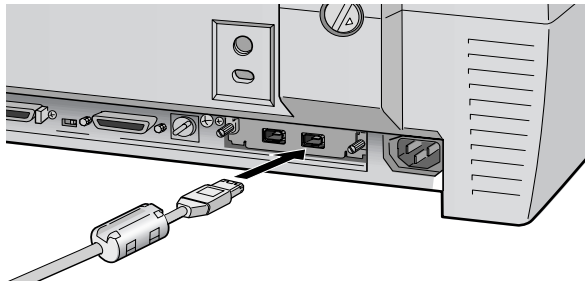
## ***Connecting the IEEE 1394 Cable to Your Computer***

The IEEE 1394 scanner interface card has two cable connectors. You can use either one to connect the scanner directly to your computer. At the same time, you can use the second connector to connect other IEEE 1394 devices in a daisy chain or tree configuration. You can also connect the scanner to another IEEE 1394 device so that it's the last IEEE 1394 device in a chain connected to your computer.

Neither your scanner nor your computer has to be off when you connect the cable. However, be careful not to connect or disconnect the cable when the scanner is in use.

Follow these steps to connect the scanner:

1. Connect one end of the cable to the IEEE 1394 port on the card.
2. Connect the other end of the cable to the IEEE 1394 port on your computer or on another IEEE 1394 device.



## Chapter 2

# Installing the Software

This chapter explains how to install the scanner software on your computer so it works properly with your scanner. It also includes instructions for installing the ISIS driver, PixTools QuickScan and Presto! PageManager. See “Installing Additional Software” on page 49.



For instructions on installing software for a network scanner, go to Chapter 4, “Network Scanning.”

---

## Installing the Scanner Software

Before you begin installing software, make sure you recalibrate your monitor to factory specifications (see your monitor documentation for instructions). Then follow the instructions for your operating system:

- If you’re running Windows Me, continue with the next section.
- If you’re running Windows 2000, go to page 30.
- If you’re running Windows 98, go to page 36.
- If you’re running Windows 95, go to page 41.
- If you’re running Windows NT 4.0, go to page 46.

## Installing the Software for Windows Me

Before you begin, make sure the GT-30000 is connected to your computer. Also, make sure you've recalibrated your monitor to factory specifications (see your monitor documentation for instructions).

This procedure automatically installs your EPSON TWAIN HS driver. You'll be asked to install your SCSI or IEEE 1394 driver at the beginning of installation. Follow the instructions on the screen to install your SCSI or IEEE 1394 driver, or see the documentation that came with your card.

You may be asked to insert your Windows CD-ROM during this procedure. Make sure you have your Windows CD-ROM available, or know where to find the Windows source files on your hard drive. If you need help locating your source files, contact your computer manufacturer.

1. Turn on your scanner first, then turn on your computer.
2. When you see the window on the right, select **Specify the location of the driver**, and then click **Next**.
3. Insert the EPSON GT-30000 Scanning Tools CD-ROM in your drive.



The Add New Hardware Wizard screen above illustrates a SCSI connection and may look slightly different for IEEE 1394 connections.

4. Make sure the **Search for the best driver for your device** and **Specify a location** options are selected.



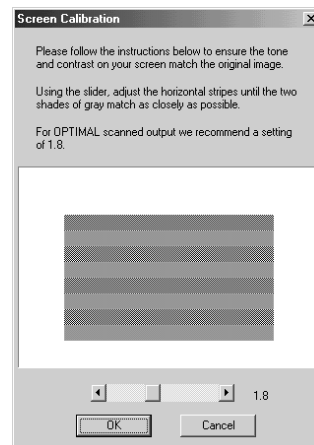
Uncheck the **Removable Media (Floppy, CD-ROM...)** option, as necessary, before clicking the **Specify a location** option. If not unchecked, the wrong driver may be installed.

5. Browse to **EPSON\English\WINME** on your CD-ROM drive. (The example to the right uses “E” as the CD-ROM drive letter. Your CD-ROM drive letter may be different.) Click **OK** to close the Browse window, and then click **Next**.
6. Follow the instructions on the screen.

If you see a message asking for your Windows Me CD-ROM, insert it and click **OK** (or click **Browse** and locate the Windows Me source files on your hard drive; then click **OK**).

7. When you see the Screen Calibration window, move the slider right or left until the stripes match as closely as possible. (The stripes will not match perfectly and the recommended setting is 1.8.) Then click **OK**.

The EPSON Screen Calibration Utility calibrates the preview image you see in your EPSON TWAIN HS driver to match your monitor settings.





You won't need to change the screen calibration as long as you continue to use the same display. If you need to recalibrate your screen at a later time, double-click the Scanners and Cameras icon in your Windows Control Panel to open the Scanners and Cameras Properties window. Select EPSON GT-30000 on the Devices tab, if necessary, and click the Properties button to display the EPSON GT-30000 Properties window. Click the Utility tab, and then click the Screen Calibration Utility button.

8. When installation is complete, click Finish.

## ***Installing Acrobat Reader and Registering Online***

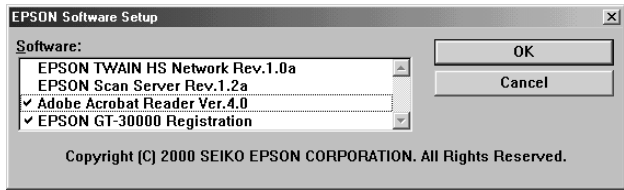
Follow these steps to install Adobe Acrobat Reader (if it is not already installed on your computer) and complete the GT-30000 electronic registration form:

1. Double-click the **My Computer** icon on your Windows desktop, then double-click the **Epson CD-ROM** icon.
2. When the **Select Language** window appears, make sure **English** is selected and click **OK**. The **Software Setup** window appears.
3. Click the **Add Software** button to display the **Software Selection** window.





4. Make sure a check mark appears beside Acrobat Reader (if you need to install it) and EPSON GT-30000 Registration, then click OK.



Don't select either of the two network applications, EPSON TWAIN HS Network or EPSON Scan Server. The EPSON TWAIN HS driver, which is already installed on your computer, lets you scan to a GT-30000 connected to your computer. If you want to install software for a network scanner, go to Chapter 4, "Network Scanning"

5. Follow the instructions on the screen.

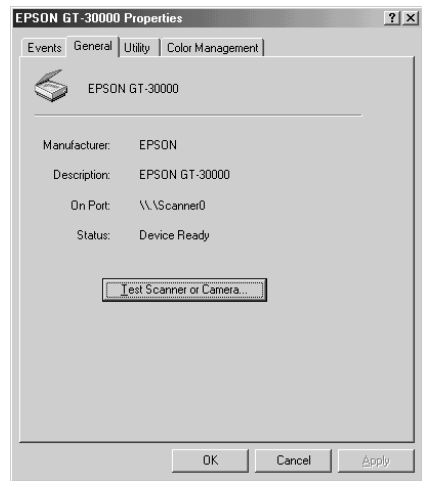
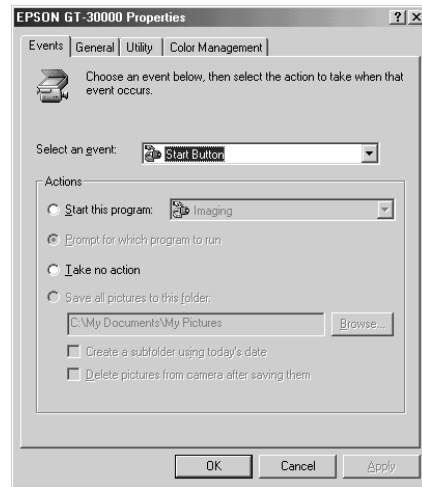
If you're done installing software, remove the EPSON GT-30000 Scanning Tools CD-ROM and restart your computer. Then follow the instructions in the next section to make sure your scanner is operating properly.

If you want to install the ISIS driver, PixTools QuickScan, or Presto! PageManager continue with the instructions under "Installing Additional Software" on page 49.

## Testing the Scanner's Operation (Windows Me)

Follow these steps to test scanner operation:

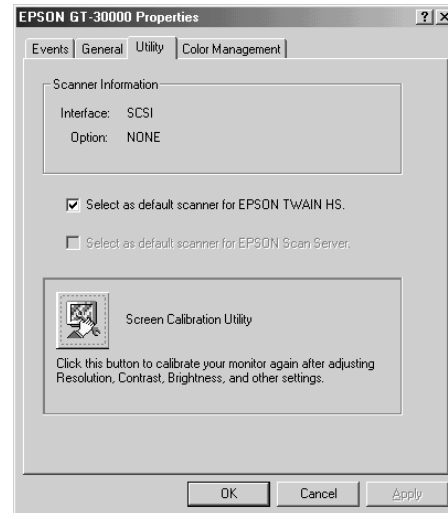
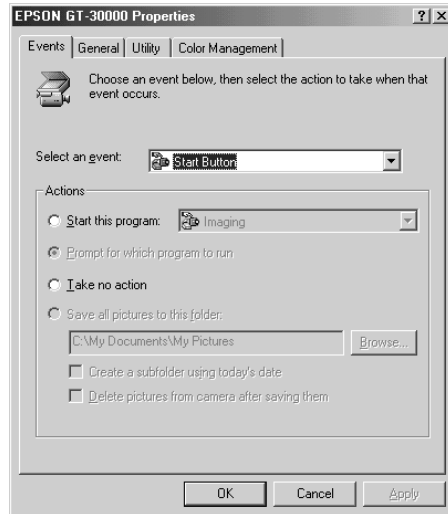
1. Open the Windows Control Panel and double-click the **Scanners and Cameras** icon to open the Scanners and Cameras Properties window.
2. Double-click the **EPSON GT-30000** icon to display the Properties window.
3. Click the **General** tab, then click the **Test Scanner or Camera** button. If the scanner is operating properly, a **Test Successful** message displays. Click **OK** to close the message. **Device Ready** appears next to **Status** on the Properties window.
4. Click **OK** to close the Properties window.



## Selecting the GT-30000 as Your Default Scanner (Windows Me)

If you have more than one scanner connected to your computer, you can set up the GT-30000 as the default scanner.

1. Open the Windows Control Panel and double-click the **Scanners and Cameras** icon.
2. Double-click the **EPSON GT-30000** icon. You see the EPSON GT-30000 Properties window.
3. Click the **Utility** tab. Make sure **Select as default scanner for EPSON TWAIN HS** is checked, click **Apply**, and then **OK**.



## Installing the Software for Windows 2000

Before you begin, make sure the GT-30000 is connected to your computer. Also, make sure you've recalibrated your monitor to factory specifications (see your monitor documentation for instructions).

This procedure automatically installs your EPSON TWAIN HS driver. You'll be asked to install your SCSI or IEEE 1394 driver at the beginning of installation. Follow the instructions on the screen to install your SCSI or IEEE 1394 driver, or see the documentation that came with your card.

You may be asked to insert your Windows CD-ROM during this procedure. Make sure you have your Windows CD-ROM available, or know where to find the Windows source files on your hard drive. If you need help locating your source files, contact your computer manufacturer.

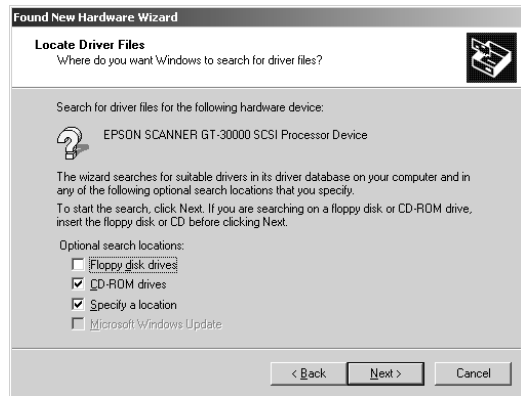
1. Turn on your scanner first, then turn on your computer.
2. When you see the window on the right, insert the EPSON GT-30000 Scanning Tools CD-ROM in your drive and click Next.



3. Select Search for a suitable driver for my device and click Next.



4. Select CD-ROM drives and Specify a location, then click Next.



5. Browse to EPSON\English\Win2000 on your CD-ROM drive. (The example to the right uses "F" as the CD-ROM drive letter. Your CD-ROM drive letter may be different.) Click OK to close the Browse window, and then click OK.



6. Follow the instructions on the screen.

If you see a message asking for your Windows 2000 CD-ROM, insert it and click OK (or click Browse and locate the Windows 2000 source files on your hard drive; then click OK).

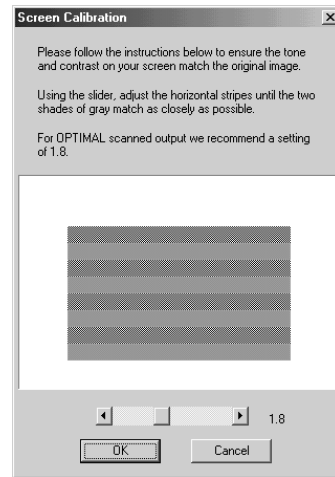
7. When you see the Digital Signature Not Found screen, click Yes.

If prompted for the EPSON Scanners Driver Disk 1, reinsert your EPSON GT-30000 Scanning Tools CD-ROM.



- When you see the Screen Calibration window, move the slider right or left until the stripes match as closely as possible. (The stripes will not match perfectly and the recommended setting is 1.8.) Then click **OK**.

The EPSON Screen Calibration Utility calibrates the preview image you see in your EPSON TWAIN HS driver to match your monitor settings.



You won't need to change the screen calibration as long as you continue to use the same display. If you need to recalibrate your screen at a later time, double-click the Scanners and Cameras icon in your Windows Control Panel to open the Scanners and Cameras Properties window. Select EPSON GT-30000 on the Devices tab, if necessary, and click the Properties button to display the EPSON GT-30000 Properties window. Click the Utility tab, and then click the Screen Calibration Utility button.

- Click **Finish** when you see a message that installation is complete, then continue with the instructions in the next section.

## Installing Acrobat Reader and Registering Online

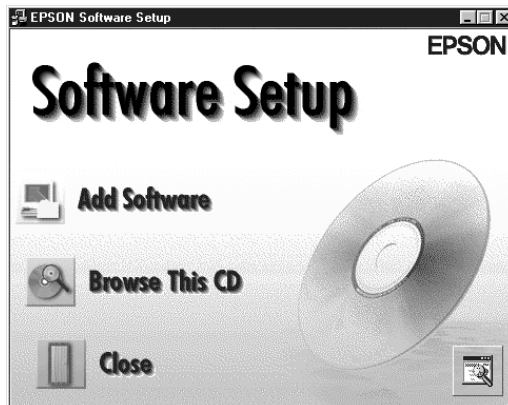
Follow these steps to install Adobe Acrobat Reader (if it is not already installed on your computer) and complete the GT-30000 electronic registration form:

1. Double-click the **My Computer** icon on your Windows desktop, then double-click the **Epson CD-ROM** icon.

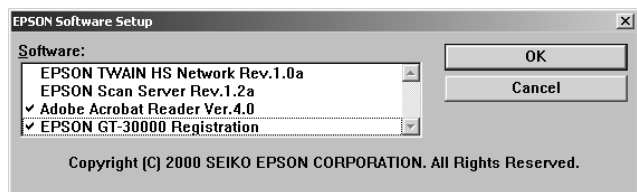
2. Make sure **English** is selected and click **OK**. The Software Setup window appears.



3. Click the **Add Software** button to display the software selection window.



4. Make sure a check mark appears beside **Acrobat Reader** (if you need to install it) and **EPSON GT-30000 Registration**, then click **OK**.



Don't select either of the two network applications, **EPSON TWAIN HS Network** or **EPSON Scan Server**. The **EPSON TWAIN HS driver**, which is already installed on your computer, lets you scan to a **GT-30000** connected to your computer. If you want to install software for a network scanner, go to Chapter 4, "Network Scanning."

5. Follow the instructions on the screen.

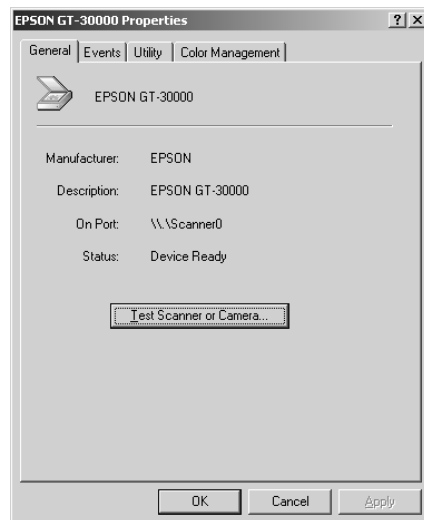
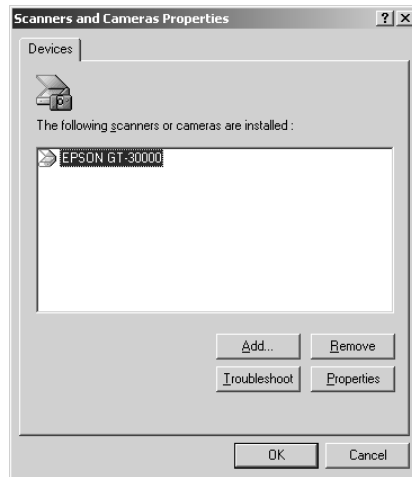
If you're done installing software, remove the EPSON GT-30000 Scanning Tools CD-ROM and restart your computer. Then follow the instructions in the next section to make sure your scanner is operating properly.

If you want to install the ISIS driver, PixTools QuickScan, or Presto! PageManager continue with the instructions under "Installing Additional Software" on page 49.

## ***Testing the Scanner's Operation (Windows 2000)***

Follow these steps to test scanner operation:

1. Open the Windows Control Panel and double-click the **Scanners and Cameras** icon to open the Scanners and Cameras Properties window.
2. Make sure **EPSON GT-30000** is selected, and then click the **Properties** button.
3. Click the **Test Scanner or Camera** button. If the scanner is operating properly, a Test Successful message displays. Click **OK** to close the message. **Device Ready** appears next to **Status**.
4. Click **OK** to close the Properties window.

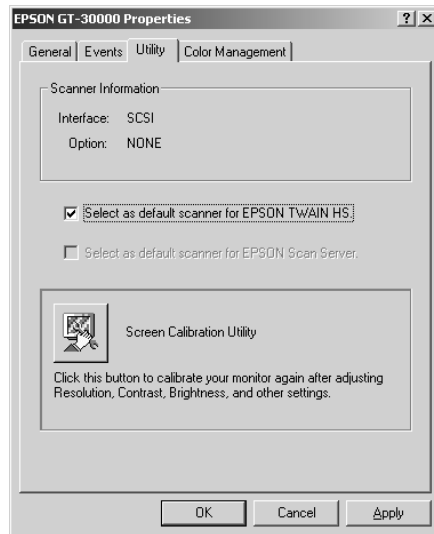
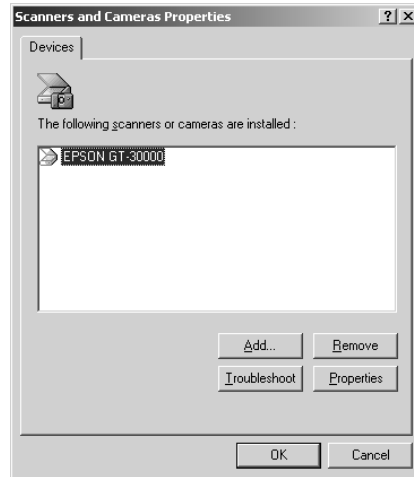




## Selecting the GT-30000 as Your Default Scanner (Windows 2000)

If you have more than one scanner connected to your computer, you can set up the GT-30000 as the default scanner.

1. Open the Windows Control Panel and double-click the **Scanners and Cameras** icon to open the **Scanners and Cameras Properties** window.
2. Make sure **EPSON GT-30000** is selected, and click the **Properties** button. You see the **EPSON GT-30000 Properties** window.
3. Click the **Utility** tab. Make sure **Select as default scanner for EPSON TWAIN HS** is checked, and then click **OK**.
4. Click **OK** to close the **Properties** window.



## Installing the Software for Windows 98

Before you begin, make sure the GT-30000 is connected to your computer. Also, make sure you've recalibrated your monitor to factory specifications (see your monitor documentation for instructions).

This procedure automatically installs your EPSON TWAIN HS driver. If you connected the scanner with a SCSI cable, you'll be asked to install your SCSI driver at the beginning of installation. Follow the instructions on the screen to install your SCSI driver, or see the documentation that came with your SCSI card.

You may be asked to insert your Windows CD-ROM during this procedure. Make sure you have your Windows CD-ROM available, or know where to find the Windows source files on your hard drive. If you need help locating your source files, contact your computer manufacturer.



If you want to use your scanner on a network, go to Chapter 4, "Network Scanning," instead.

1. Turn on the scanner first, then turn on your computer. When you see the window on the right, click **Next**. (The Wizard may also say it has found an unknown device.)
2. Select **Search for the best driver for your device**, and click **Next**.
3. Insert the EPSON GT-30000 Scanner Software CD-ROM in your drive.



4. Select **Specify a location**, if necessary. Browse to **EPSON\English\WIN98** on your CD-ROM drive. Then click **Next**.

(The example on the right shows “E” as the CD-ROM drive. Your CD-ROM drive letter may be different.)

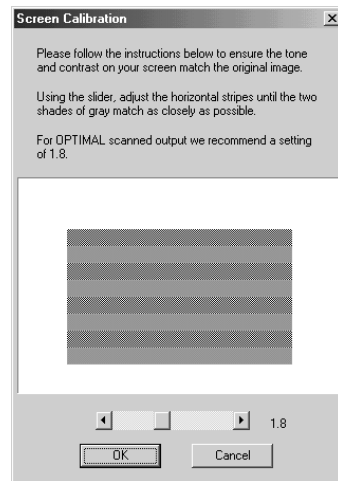


5. Follow the instructions on the screen.

If you see a message asking for your Windows 98 CD-ROM, insert it and click **OK** (or select **Specify a location**, click **Browse**, and locate the Windows 98 source files on your hard drive. Then click **OK**.) When prompted, reinsert your scanner software CD-ROM.

6. When you see the Screen Calibration window, move the slider right or left until the stripes match as closely as possible. (The stripes will not match perfectly. The recommended setting is 1.8.) Then click **OK**.

The EPSON Screen Calibration Utility calibrates the preview image you see in your EPSON TWAIN HS driver to match your monitor settings.



You won't need to change the screen calibration as long as you continue to use the same display. If you need to recalibrate your screen at a later time, double-click the Scanners and Cameras icon in your Windows Control Panel to open the Scanners and Cameras Properties window. Select EPSON GT-30000 on the Devices tab, if necessary, and click the Properties button to display the EPSON GT-30000 Properties window. Click the Utility tab, and then click the Screen Calibration Utility button.

7. When installation is complete, click **Finish**.

Continue with the instructions in the next section to install Acrobat Reader, if necessary, and register your scanner online.

## Installing Acrobat Reader and Registering Online

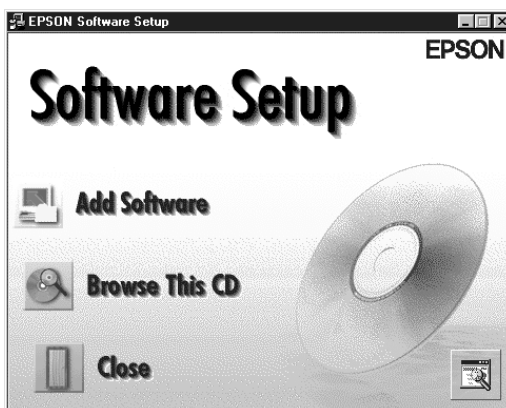
Follow these steps to install Adobe Acrobat Reader (if it is not already installed on your computer) and complete the GT-30000 electronic registration form:

1. Double-click the **My Computer** icon on your Windows desktop, then double-click the **Epson CD-ROM** icon.

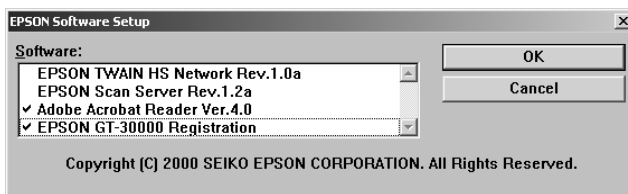
2. Make sure **English** is selected and click **OK**. The Software Setup window appears.



3. Click the **Add Software** button to display the software selection window.



4. Make sure a check mark appears beside **Acrobat Reader** (if you need to install it) and **EPSON GT-30000 Registration**, then click **OK**.



Don't select either of the two network applications, EPSON TWAIN HS Network or EPSON Scan Server. The EPSON TWAIN HS driver, which is already installed on your computer, lets you scan to a GT-30000 connected to your computer. If you want to install software for a network scanner, go to Chapter 4, "Network Scanning."

5. Follow the instructions on the screen.

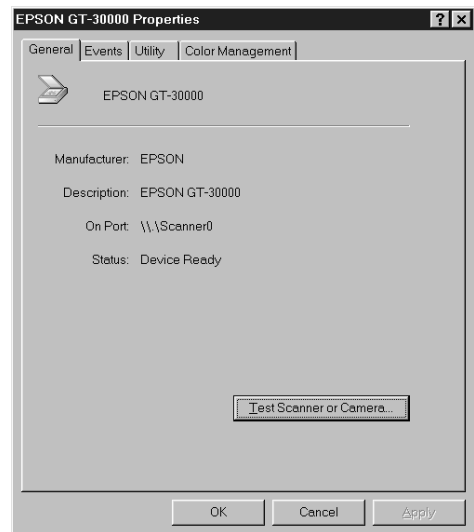
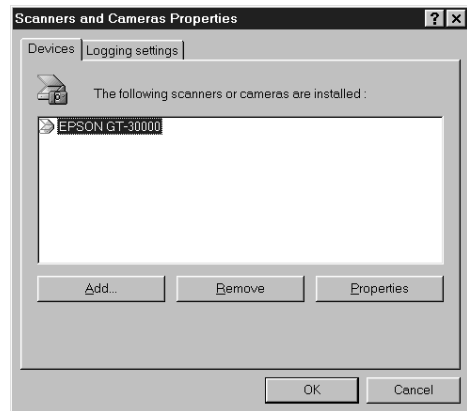
If you're done installing software, remove the EPSON GT-30000 Scanning Tools CD-ROM and restart your computer. Then follow the instructions in the next section to make sure your scanner is operating properly.

If you want to install the ISIS driver, PixTools QuickScan, or Presto! PageManager continue with the instructions under "Installing Additional Software" on page 49.

## ***Testing Your Scanner Connection (Windows 98)***

You need to verify that your scanner was properly connected and the software was installed correctly. Follow these steps to test scanner operation:

1. Open the Windows Control Panel and double-click the **Scanners and Cameras** icon to open the Scanners and Cameras Properties window.
2. Make sure EPSON GT-30000 is selected, then click the **Properties** button.
3. If necessary, click the **General** tab. Click the **Test Scanner or Camera** button. If the scanner is operating properly, **Device Ready** appears next to Status.
4. Click **OK** to close the Properties window.

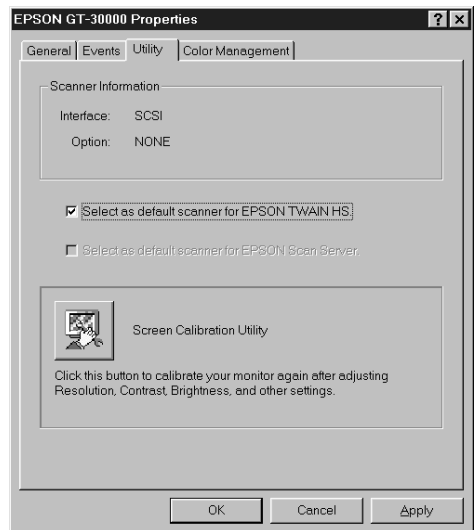
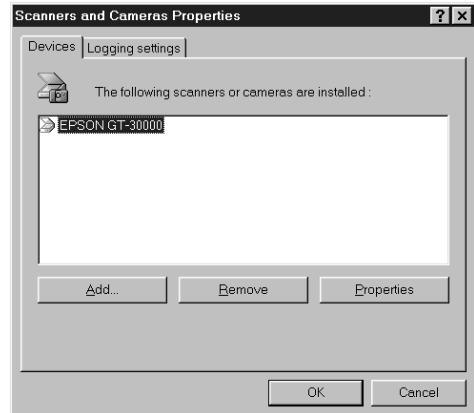


## Selecting the GT-30000 as Your Default Scanner (Windows 98)

If you have more than one scanner connected to your computer and you're running Windows 98, you can set up the EPSON GT-30000 as your default scanner.

1. Open the Windows Control Panel and double-click the **Scanners and Cameras** icon to open the Scanners and Cameras Properties window.
2. Select **EPSON GT-30000**, if necessary, and click the **Properties** button.
3. Click the **Utility** tab. Make sure **Select as default scanner for EPSON TWAIN HS** is checked, and then click **OK**.
4. Click **OK** to close the Scanners and Cameras Properties window.

The default scanner remains in effect until you use this procedure to change it again.



## Installing the Software for Windows 95

Follow the instructions in this section to install your EPSON GT-30000 scanner driver and other software on your scanner software CD-ROM for stand-alone scanning. Before you begin installing software, make sure you recalibrate your monitor to factory specifications. (See your monitor documentation for instructions.)

If you want to use your scanner on a network, go to Chapter 4, “Network Scanning,” instead.

You may be asked to insert your Windows CD-ROM during this procedure. Make sure you have your Windows CD-ROM available, or know where to find the Windows source files on your hard drive. If you need help locating your source files, contact your computer manufacturer.

1. Turn on your scanner first, then turn on your computer. When you see the window on the right, click **Next**.



2. Click **Other Locations**.

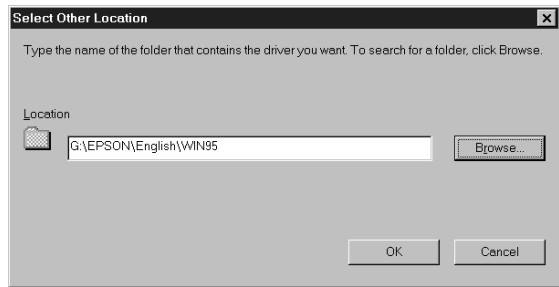


3. Make sure your scanner software CD-ROM is in the drive. Browse to the following location on your CD-ROM drive: **EPSON\English\WIN95**. Then click **OK**.

(The example on the right shows “G” as the CD-ROM drive. Your CD-ROM drive letter may be different.)

4. When you see the window on the right, click **Finish**. Then restart your computer.

Continue with the instructions in the next section to install EPSON TWAIN HS and Acrobat Reader (if necessary).





## Installing Other Software on Your CD-ROM

Follow these steps to install EPSON TWAIN HS, Adobe Acrobat Reader (if it is not already installed on your computer) and complete the GT-30000 electronic registration form.

1. Double-click the My Computer icon on your desktop, then double-click the Epson CD-ROM icon.

2. Make sure English is selected and click OK. The Software Setup window appears.

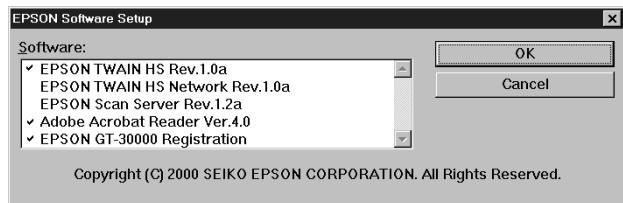


3. Click the Add Software button to display the software selection window.



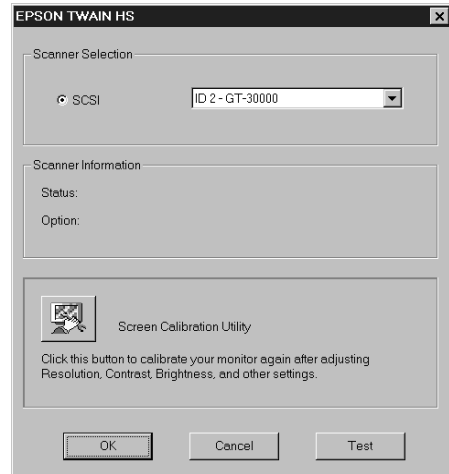
4. You must install EPSON TWAIN HS to use your scanner. Make sure a check mark appears beside it.

Also select Acrobat Reader (if you need to install it) and EPSON GT-30000 Registration, then click OK.



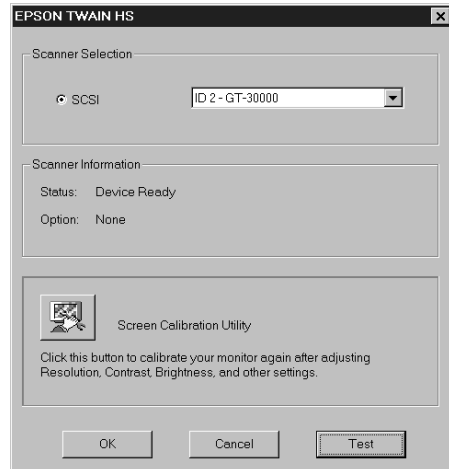
Don't select either of the two network applications, EPSON TWAIN HS Network or EPSON Scan Server. The EPSON TWAIN HS driver lets you scan when your scanner is connected directly to your computer. If you want to use the scanner on a network, go to Chapter 4, "Network Scanning," instead.

5. Follow the instructions on the screen to install EPSON TWAIN HS. When installation is complete, you see the window on the right. Make sure **SCSI** is selected and **GT-30000** appears in the Scanner Selection list.



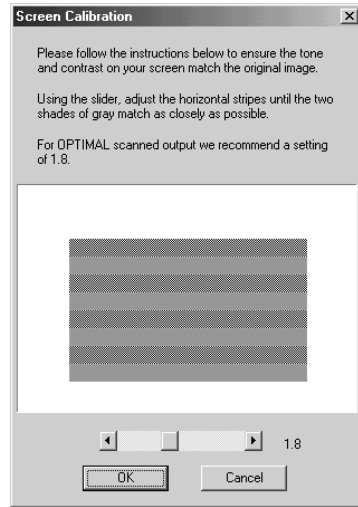
6. Click **Test** to check the connection. If the scanner software is installed correctly, you see **Status: Device Ready** under Scanner Information. Click **OK** to close the window.

You can test your scanner connection at any time. (Double-click the **EPSON TWAIN HS** icon in your Windows Control Panel to open the EPSON TWAIN HS window. Then click the **Test** button.)



7. When you see the Screen Calibration window, move the slider right or left until the stripes match as closely as possible. (The stripes will not match perfectly. The recommended setting is 1.8.) Then click **OK**.

The EPSON Screen Calibration Utility calibrates the preview image you see in your EPSON TWAIN HS driver to match your monitor settings.



You won't need to change the screen calibration as long as you continue to use the same display. If you need to recalibrate your screen at a later time, double-click the EPSON TWAIN HS icon in your Windows Control Panel to open the EPSON TWAIN HS window. Then click the Screen Calibration Utility button at the bottom of the window.

8. Follow the instructions on the screen to install Acrobat Reader (if necessary).

To make sure your scanner driver is installed correctly, verify that the scanner is listed in the Windows Device Manager. (Click **Start**, **Settings**, **Control Panel**, then double-click the **System** icon. Select the Device Manager tab and double-click **EPSON Scanners**. GT-30000 should appear in the list.)

If you're done installing software, restart your computer. If you want to install the ISIS driver, PixTools QuickScan, or Presto! PageManager, see page 49.

## ***Installing the Software for Windows NT 4.0***

Follow the instructions in this section to install the EPSON GT-30000 scanner driver and other software on your scanner software CD-ROM. Before you begin installing software, make sure you recalibrate your monitor to factory specifications. (See your monitor documentation for instructions.)

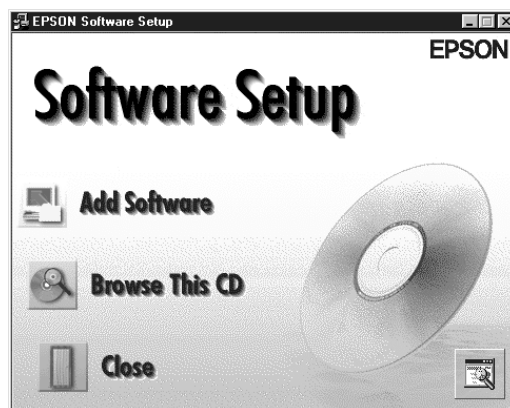
You may be asked to insert your Windows CD-ROM during this procedure. Make sure you have your Windows CD-ROM available, or know where to find the Windows source files on your hard drive. If you need help locating your source files, contact your computer manufacturer.

If you want to use your scanner on a network, go to Chapter 4, “Network Scanning,” instead.

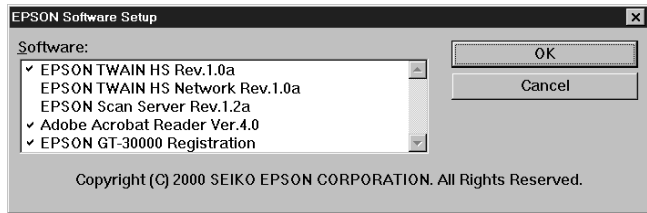
1. Turn on your scanner first, then turn on your computer.
2. Log onto Windows NT and insert your EPSON GT-30000 Scanner Software CD-ROM in your drive.
3. If you don't see the Select Language screen, double-click the My Computer icon on your desktop, then double-click the Epson CD-ROM icon.
4. Make sure English is selected and click OK. The Software Setup window appears.



5. Click the Add Software button to display the software selection window.



6. You must install EPSON TWAIN HS to use your scanner. Make sure a check mark appears beside it.



Also select Acrobat Reader (if you need to install it) and EPSON GT-30000 Registration, then click **OK**.



Don't select either of the two network applications, EPSON TWAIN HS Network or EPSON Scan Server. The EPSON TWAIN HS driver lets you scan when your scanner is connected directly to your computer. If you want to use the scanner on a network, go to Chapter 4, "Network Scanning," instead.

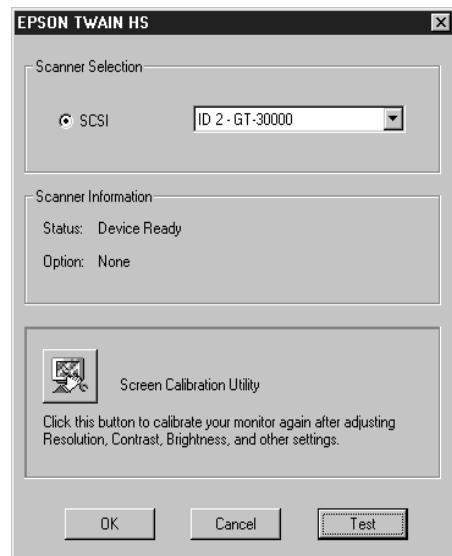
7. Follow the instructions on the screen to install EPSON TWAIN HS. When installation is complete, you see the window on the right. Make sure **SCSI** is selected and **GT-30000** appears in the Scanner Selection list.



8. Click **Test** to check the connection.

If the scanner software is installed correctly, you see **Status: Device Ready** under Scanner Information. Click **OK** to close the window.

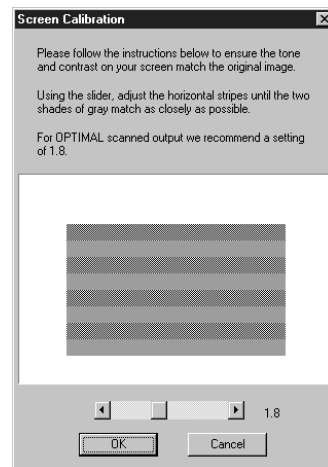
You can test your scanner connection at any time. (Double-click the **EPSON TWAIN HS** icon in the Windows Control Panel to open the EPSON TWAIN HS window. Then click the **Test** button.)



9. When you see the Screen Calibration window, move the slider right or left until the stripes match as closely as possible. (The stripes will not match perfectly. The recommended setting is 1.8.) Then click **OK**.

The EPSON Screen Calibration Utility calibrates the preview image you see in your EPSON TWAIN HS driver to match your monitor settings.

10. Follow the instructions on the screen to install Acrobat Reader (if necessary).



You won't need to change the screen calibration as long as you continue to use the same display. If you need to recalibrate your screen at a later time, open the EPSON TWAIN HS window by double-clicking the EPSON TWAIN HS icon in the Windows Control Panel. Then click the Screen Calibration button at the bottom of the window to start the utility.

If you're done installing software, restart your computer. If you want to install the ISIS driver, PixTools QuickScan, or Presto! PageManager, go to the next section.

---

# Installing Additional Software

Follow the instructions in this section to install the ISIS driver, PixTools QuickScan, and Presto! PageManager.

## *Installing the ISIS Driver*

Follow these steps to install the ISIS driver:



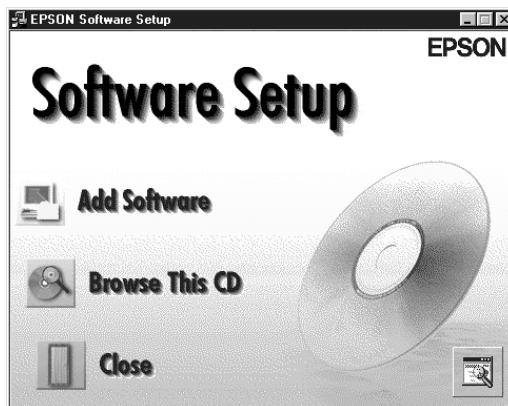
You should install your ISIS-compatible application before you install the ISIS driver.

1. If necessary, insert your scanner software CD-ROM in the drive. If you don't see the Select Language screen, double-click **My Computer** on your desktop, then double-click the **Epson CD-ROM** icon.

2. Make sure **English** is selected and click **OK**. The Software Setup window appears.



3. Click **Browse This CD**.
4. To install the ISIS driver, double-click the ISIS folder, then double-click the **Setup.exe** icon. Then follow the instructions on the screen.
5. When installation is complete, click **OK**, then restart your computer.



## Installing PixTools QuickScan

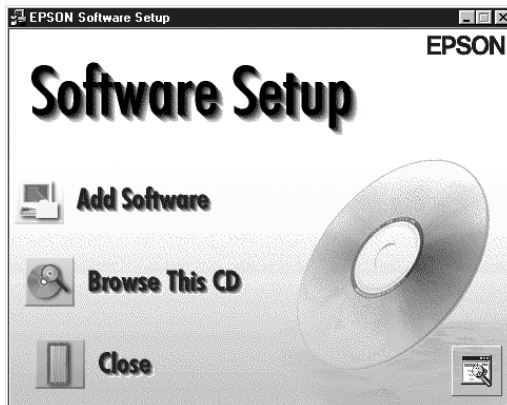
Follow these steps to install PixTools QuickScan:

1. If necessary, insert your scanner software CD-ROM in the drive. If you don't see the Select Language screen, double-click **My Computer** on your desktop, then double-click the Epson CD-ROM icon.

2. Make sure English is selected and click **OK**. The Software Setup window appears.



3. Click **Browse This CD**.
4. To install QuickScan, double-click the Quickscan folder, then double-click the **Setup.exe** icon. Then follow the instructions on the screen.
5. When installation is complete, click **OK**, then restart your computer.

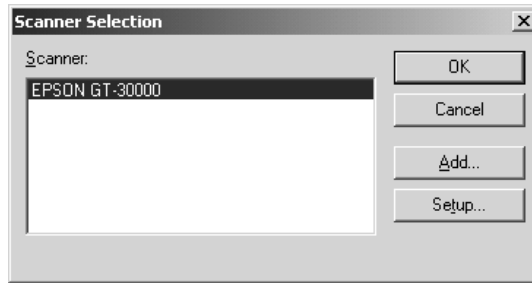




## ***Accessing the ISIS Driver from QuickScan***

Before you can scan, you must select the GT-30000 as your scanner. To select the scanner:

1. Choose **Select Scanner** from the **File** menu. In a few moments, the **Scanner Selection** dialog appears.
2. Make sure **EPSON GT-30000** is selected and click **OK**.



## Installing Presto! PageManager

Follow these steps to install Presto! PageManager:

1. If necessary, insert your scanner software CD-ROM in the drive. If you don't see the Select Language screen, double-click **My Computer** on your desktop, then double-click the Epson CD-ROM icon.

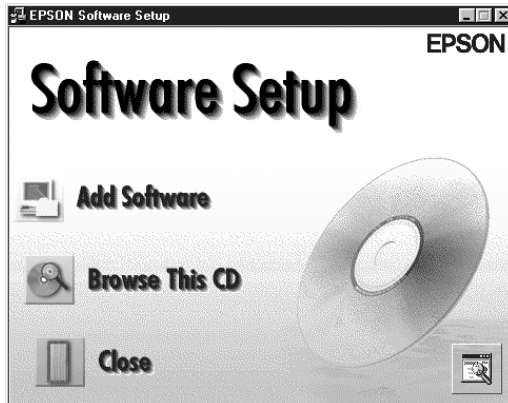
2. Make sure **English** is selected and click **OK**. The Software Setup window appears.



3. Click **Browse This CD**.

4. To install Presto! PageManager, double-click the **pagemgr** folder, then double-click the **English** folder.

5. Double-click the **Setup.exe** icon, then follow the instructions on the screen.



6. When installation is complete, click **OK**, then restart your computer.

# Chapter 3

## How to Scan

This chapter gives you an overview of the scanning process and then provides step-by-step scanning instructions.

---

### Overview

Getting the best scan possible depends on several factors, including the quality of your original and the resolution you select. The better your original is, the better your scan will be. While you can make some color corrections in your scanning software, you'll need to do any major color photo retouching in a program such as Adobe Photoshop®. To get the best possible scan, keep the document table clean, and make sure the document is flat against the glass surface.

### *Selecting Your Scanner Source*

Your EPSON GT-30000 scanner comes with two all-purpose drivers, EPSON TWAIN HS and EPSON TWAIN HS Network, as well as the ISIS driver. The scanner driver is what you select as the source in your application. This is the software that allows your computer to communicate with your scanner. It also allows you to select certain settings to optimize the scanned image.



If you installed EPSON TWAIN HS on the scanner server so that you could make a direct connection to the scanner, remember that you must exit EPSON Scan Server to use EPSON TWAIN HS. EPSON Scan Server disables EPSON TWAIN HS.

If you're accessing a GT-30000 scanner connected to another computer, always use EPSON TWAIN HS Network as your source. If you're accessing the GT-30000 scanner connected to your computer, always use EPSON TWAIN HS. Do not use EPSON TWAIN HS Network.

For details on using EPSON TWAIN HS or EPSON TWAIN HS Network, see page 58 and your electronic *EPSON GT-30000 Reference Guide*. You can also install the ISIS driver and use it as your source. (See the *ISIS User's Guide* on your GT-30000 Scanning Tools CD-ROM for details.)

## **Selecting Resolution**

Resolution refers to how many dots per inch (dpi) or dots per centimeter (dpcm) your image contains. The best resolution for a scanned image depends on the type of image you're scanning and your final output device.

As a rule of thumb for most images except line art, use a scanning resolution that is approximately one third of your output resolution. For example, use a scanning resolution up to 100 dpi with a 300 dpi laser printer, and up to 200 dpi with a 600 dpi laser printer. For 1440 dpi ink jet printers, such as the EPSON Stylus® Color series, use a scanning resolution of up to 300 dpi. Try a scanning resolution of 240 dpi for 720 dpi printing.

Keep the following in mind when you choose a resolution:

- The higher the resolution you select, the larger the resulting image file will be. For example, an 8.5 × 11-inch original scanned at 300 dpi can produce a 24MB file. The same original scanned at 72 dpi creates a 1.3MB file. Large files take longer to process and print, so consider the practical limitations of your computer system and hard disk drive when selecting a resolution. To keep your file size manageable, select the lowest possible resolution that gives acceptable quality. (If your final output is for on-screen viewing, you can scan at 72 dpi and reduce your file size.)
- If you need to scan at a higher resolution, you can reduce the size of the resulting image file by scanning only part of the image. For information about selecting part of an image, see “Making and Modifying Marquees” in your electronic *EPSON GT-30000 Reference Guide*.

## ***Scanning Color Images***

If the colors in your scanned image don't match those in your original document, try experimenting with the Unsharp Mask setting. Click the **Destination** button on the EPSON TWAIN HS or EPSON TWAIN HS Network main window to display the Destination window, and then select or deselect **Unsharp Mask**.

## ***Scaling (Resizing) Images***

If you plan to enlarge your image, it's better to enlarge it by scanning at a higher resolution rather than adjusting resolution in your application. Each time you modify an image, you lose some image quality.

Keep in mind when you enlarge a small photo, you'll need to scan at a high enough resolution to retain your image quality, but not so high that your file size is too large to be efficient.

## ***Batch Scanning***

You can use batch scanning to save time. Batch scanning allows you to scan several images at once, or the same image with several different settings.

For more information, see "Making and Modifying Marquees" in your electronic *EPSON GT-30000 Reference Guide*.

---

# Step-by-Step Scanning Instructions

This section contains step-by-step instructions for scanning an image. Before you scan, make sure you've set up your scanner and installed the software as described in Chapter 1, "Setting Up Your Scanner."

If you are scanning a document with multiple pages, see "Loading the Automatic Document Feeder" below. If you are scanning a single page, see "Placing a Single Original Document" on page 57.

## *Loading the Automatic Document Feeder*

You can load up to 100 sheets in the automatic document feeder (ADF). First, make sure the document:

- Has no wet ink on it.
- Has no holes.
- Is not ripped or wrinkled.
- Has no staples or other objects attached that may damage the feeder.
- Has no folds.
- Is not a multipart form.
- Is not bound.
- Has no carbon coating.
- Has no cut-out areas.

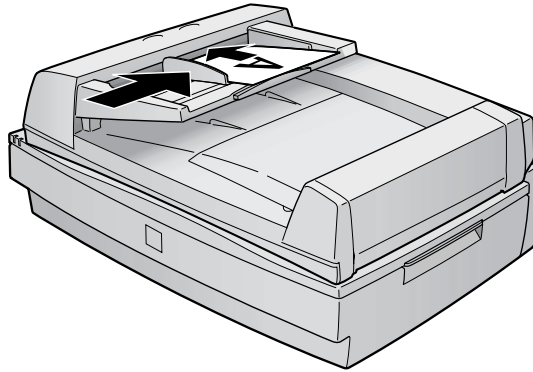


When scanning high-quality color or halftone documents, it's best to open the ADF and scan documents manually.

Don't open the ADF while scanning. You'll get an option error and possibly a paper feeding error. Always close the ADF before scanning or using the feeder.

To load documents into the ADF, follow these steps:

1. Slide the edge guide all the way out.
2. Insert the document stack face up into the ADF until it meets resistance. Then move the right edge guide so it is flush with the right edge of your document.

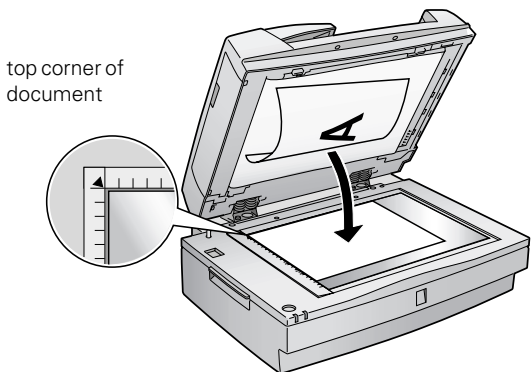


3. Continue with the scanning procedure on page 58.

## ***Placing a Single Original Document***

Follow these steps to position a single page:

1. Raise the ADF and place your document face down on the document table.
2. Position the document so the horizontal and vertical edges are carefully aligned with the scales on the top and left side of the document table.
3. Close the ADF slowly. Be careful not to move the document.



# Scanning with EPSON TWAIN HS

Follow the steps below to scan a document using EPSON TWAIN HS or EPSON TWAIN HS Network:

1. Start your host application (for example, Presto! PageManager or any other application that supports EPSON TWAIN HS).
2. Select your scanner source. (Unless you change your source, you need to do this step only once.)

For example, if you're using Presto! PageManager as your host application, click **File**, then **Select Source**. In the Select Source dialog box, select **EPSON TWAIN HS**. Then click **Select**.

If you're accessing a network scanner connected to another computer, select **EPSON TWAIN HS Network** as your input source and click **OK**.



You can't select EPSON TWAIN HS as your scanner source if you're using a network scanner and EPSON Scan Server is running. EPSON Scan Server disables EPSON TWAIN HS.

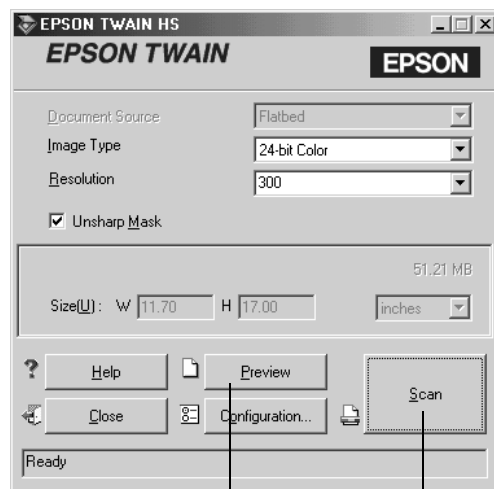
For example, choose **Acquire** from Presto! PageManager's **File** menu.

The EPSON TWAIN HS main window appears.

3. Choose the **Document Source** and **Image Type**.

For example, if you're scanning a photograph, select **Flatbed** as your **Document Source** and **24-bit Color (Std)** as your **Image Type**.

When using the ADF, choose **ADF-Single-sided** or **ADF-Double-sided** as your **Document Source**.



click to display a preview of the image


click to start scanning




4. Click the **Preview** button. You see a preview of your scan in the window that opens.

If you are scanning multiple pages using the ADF, you do not need to Preview the document unless you want to scan only a portion of a document.

5. Choose your scan settings.

Click the  **Auto Locate** button to

automatically define the scan area around the edges of your image. You can also adjust the scan area by positioning the mouse pointer over the dotted line around the marquee's edge and dragging the box to resize the marquee.

Click the  **Auto Exposure** button to automatically set the highlight and shadow exposure.



Generally it's a good idea to use the Auto Exposure button to obtain the best settings for your scan. See your electronic *EPSON GT-30000 Reference Guide* for more information about choosing settings.

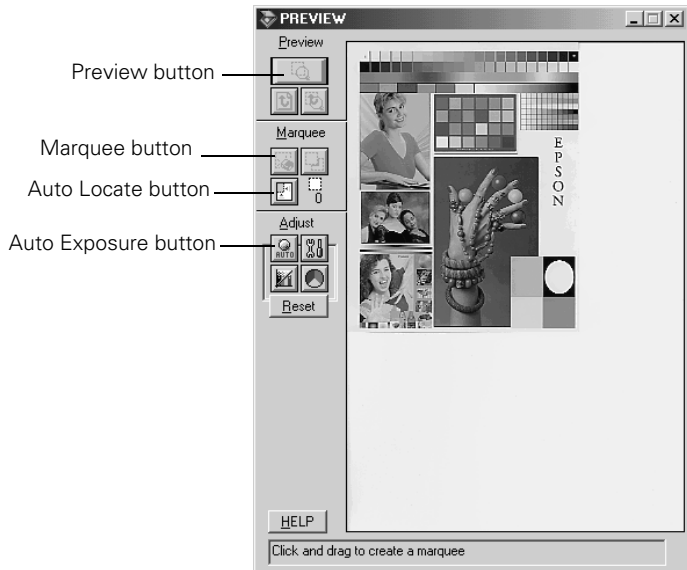
If you need to remove color cast from your image, use the Gray Balance Intensity feature.

6. When you've finished making adjustments, click the **Scan** button.

The **READY** light on the front of the scanner flickers while it's scanning. In a few moments, a scanned image is imported into your host application's window.

(If the **READY** light continues to blink, it may indicate an error condition. See Chapter 6, "Solving Problems," for more information.)

7. Click **Close** to close the EPSON TWAIN HS or EPSON TWAIN HS Network window and return to your application.



Preview button

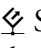
Marquee button


Auto Locate button

Auto Exposure button



---

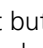

## Using the Start Button

You can load a document in the scanner, press the  Start button, and watch while the assigned application starts and then scans your document.



This section shows you how to set up the  Start button to launch an application which supports this feature.

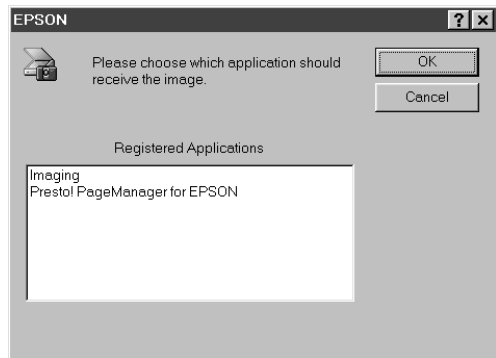


The  Start button features described in this chapter are only available when you use EPSON TWAIN HS to access a scanner connected to your computer and you are running Windows Me, Windows 2000, or Windows 98. If you are running Windows 95 or Windows NT, the  Start button is disabled.

To use the  Start button with a network scanner, the client computer must start both the host application and EPSON TWAIN HS Network. Pressing the  Start button sends the scanned image to the client computer currently connected to the scanner server, but does not automatically launch any applications.

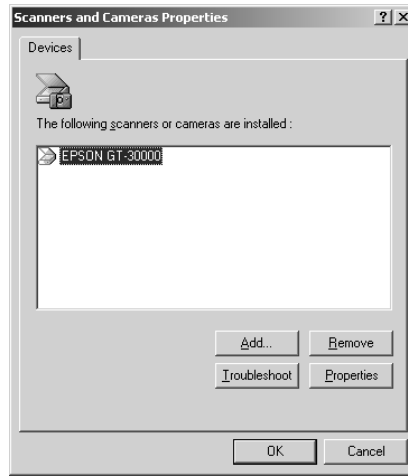
## Setting Up the Start Button


If you're running Windows Me, Windows 2000, or Windows 98, whenever you press the  Start button you'll see a window asking you to choose which application to launch. To avoid this window, make sure that only one application is assigned to the  Start button.

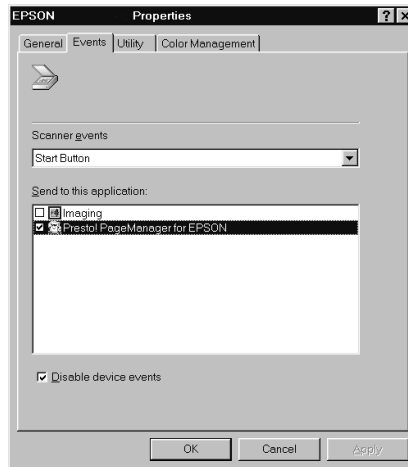


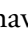
Follow these steps to assign an application to the  Start button:

1. Open the Windows Control Panel and double-click the **Scanners and Cameras** icon.
2. Select **EPSON GT-30000**, if necessary, and click **Properties**. If you are running Windows Me, double-click the **EPSON GT-30000** icon.

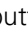


3. Click the **Events** tab.
4. Make sure **Start Button** appears in the Scanner events box, then deselect any applications you don't want to use in the Send to this application list. When you finish, a check mark should appear only beside the application that you want to assign to the  Start button.
5. Click **OK** to close the EPSON GT-30000 Properties window, then click **OK** again to close the Scanners and Cameras Properties window.



Press the scanner's  Start button to have EPSON TWAIN HS started and the document scanned into the assigned application.



You can disable the  Start button by clicking the **Disable device events** checkbox on the **Events** tab.



## Chapter 4

# Network Scanning


You can use EPSON Scan Server and EPSON TWAIN HS Network, two applications on your EPSON GT-30000 Scanner Software CD-ROM, to share your scanner with other users in a small workgroup.

Your network must have a scanner server (the Windows computer connected to the scanner) and one or more client computers. Only one client computer at a time can connect to the scanner server and access the scanner. However, you can have more than one scanner and scanner server on a network, so clients can choose which scanner to use.

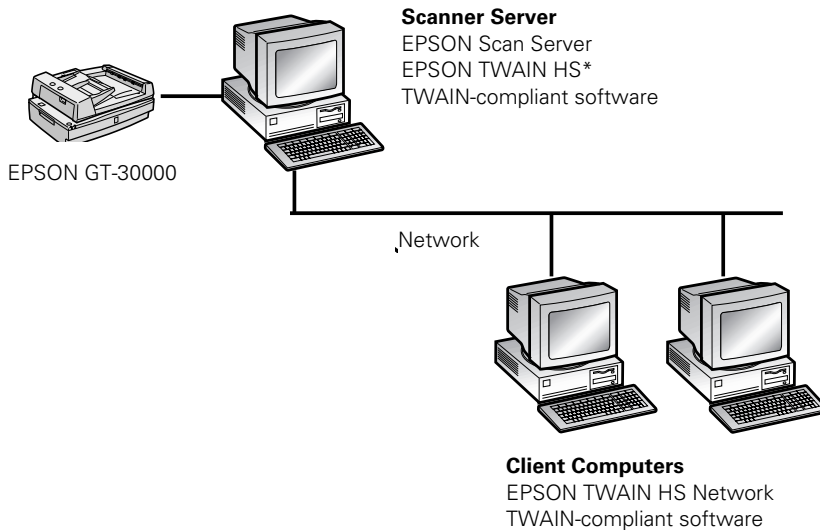
Here are some other requirements for sharing a scanner:

- The scanner server must be an IBM® Pentium® compatible PC running Windows Me, Windows 2000, Windows 98, Windows 95, or Windows NT 4.0 with Service Pack 3 or higher.
- Client computers can be running Windows Me, Windows 2000, Windows 98, Windows 95, or Windows NT 4.0.
- Both the client computers and the scanner server must have a network interface card installed, and must be running the TCP/IP protocol (see Appendix A for instructions on installing the TCP/IP protocol).
- EPSON Scan Server must be installed on the scanner server, and EPSON TWAIN HS Network must be installed on client computers.
- It is recommended the scan server have a static IP address.

This chapter includes the following:

- How to install, set up, and start EPSON Scan Server on the scanner server
- How to install and start EPSON TWAIN HS Network on client computers
- How to begin a scan from the client computer, the scanner server, or the scanner's  Start button
- How to stop a scan in progress.

The illustration below shows a sample network configuration in which network scanning is available. The software you install depends on which computer you're setting up—a scanner server or client computer.



\* If you installed EPSON TWAIN HS on the scanner server so that you could make a direct connection to the scanner, remember that you must exit EPSON Scan Server to use EPSON TWAIN HS.

---

## Setting Up the Scanner Server

You can set up any Windows Me, Windows 2000, Windows 98, Windows 95, or Windows NT 4.0 computer as a scanner server, as long as it has a network interface card installed and is running the TCP/IP protocol.

Before you begin, make sure the scanner is unlocked and connected to the scanner server (see Chapter 1, “Setting Up Your Scanner” for details). If you don’t have the TCP/IP protocol installed on the scanner server, see Appendix A, “Installing the TCP/IP Protocol.”

Follow the instructions for your operating system:

- If you’re running Windows Me, continue with the next section.
- If you’re running Windows 2000, go to page 71.
- If you’re running Windows 98, go to page 76.
- If you’re running Windows 95, go to page 83.
- If you’re running Windows NT, go to page 88.

# Installing the Scanner Server Software for Windows Me

Before you begin, make sure the GT-30000 is connected to your computer. Also, make sure you've recalibrated your monitor to factory specifications. (See your monitor documentation for instructions.)

Depending on how your computer system was originally set up, you may be asked to insert your Windows Me CD-ROM during driver installation. Make sure you have it available, or know where to find the Windows source files on your hard disk (for example, in the Windows folder). If you need help, contact your computer manufacturer.



If you've just installed a SCSI interface card, you may be asked to install a SCSI driver at the beginning of installation. Follow the instructions on the screen to install the best driver, then continue with the scanner server installation.

1. Turn on your scanner first, then turn on your computer.
2. When you see the window on the right, select **Specify the location of the driver**, and then click **Next**.
3. Insert the EPSON GT-30000 Scanning Tools CD-ROM in your drive and click **Next**.





4. Make sure the **Search for the best driver for your device and Specify a location options** are selected.



Uncheck the **Removable Media (Floppy, CD-ROM...)** option, as necessary, before clicking the **Specify a location** option. If not unchecked, the wrong driver may be installed.

5. Browse to **EPSON\ English\WINME** on your CD-ROM drive. (The example to the right uses “E” as the CD-ROM drive letter. Your CD-ROM drive letter may be different.) Click **OK** to close the Browse window, and then click **Next**.
6. Follow the instructions on the screen.  
  
If you see a message asking for your Windows Me CD-ROM, insert it and click **OK** (or click **Browse** and locate the Windows Me source files on your hard drive; then click **OK**).
7. Click **Finish** when you see a message that installation is complete.
8. Continue with the instructions in the next section.

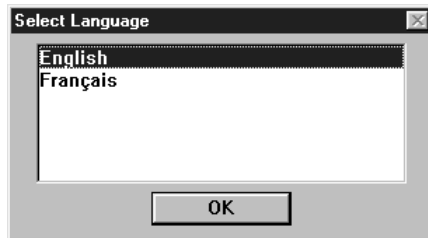
## Finishing the Scanner Server Installation on Windows Me

Before your computer can share its scanner, you must install EPSON Scan Server. At the same time, you can install other software that came with your scanner. Your scanner comes with a multi-user license (6) for Presto! PageManager, an unlimited license for EPSON TWAIN HS Network and TWAIN HS, and a single-user license for PixTools QuickScan and the ISIS driver. If you want to install them on additional computers, please contact the software manufacturer to purchase additional licenses.

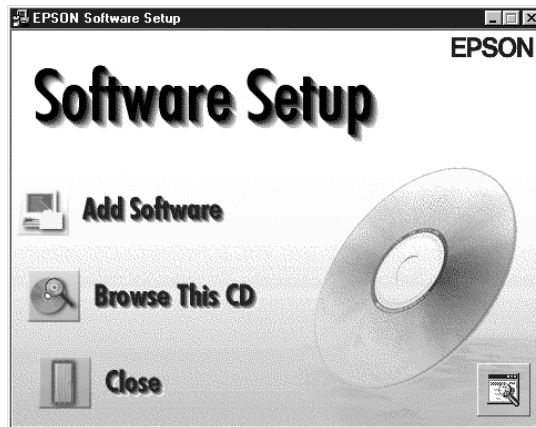


The ISIS driver and PixTools QuickScan cannot be run over a network.

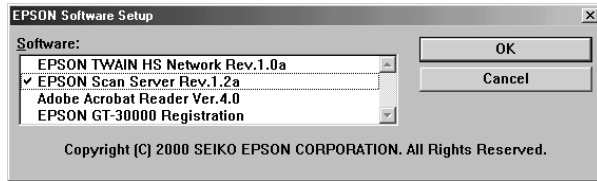
1. If the Select Language window doesn't appear, double-click the **My Computer** icon on your Windows desktop, then double-click the **Epson CD-ROM** icon.
2. When the Select Language window displays, make sure **English** is selected and click **OK**.



3. Click the **Add Software** button to display the Software Selection window.



4. A check mark appears beside applications selected for installation. If you want to deselect Acrobat Reader or the GT-30000 Registration (as shown), click the application to clear the check mark. Then click OK.



Do not install EPSON TWAIN HS Network to use the scanner connected to your computer—use EPSON TWAIN HS instead. EPSON TWAIN HS is automatically installed when you install the scanner server software. Only install EPSON TWAIN HS Network if you want to use a GT-30000 connected to another computer.

5. Follow the instructions on the screen to install EPSON Scan Server and any other software you selected in the software selection window.
6. Follow the instructions in “Installing Additional Software” on page 49 if you want to install the ISIS driver, PixTools QuickScan, or Presto! PageManager.
7. When you’re done installing software, restart your computer.

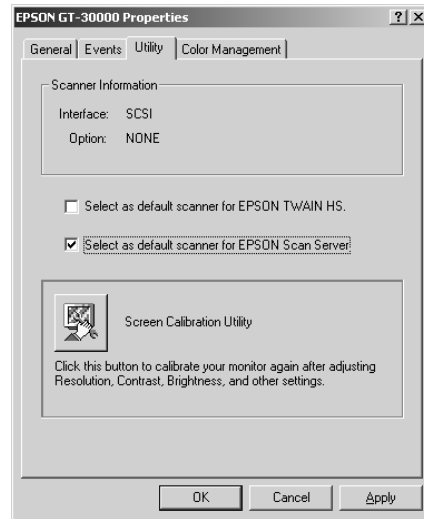
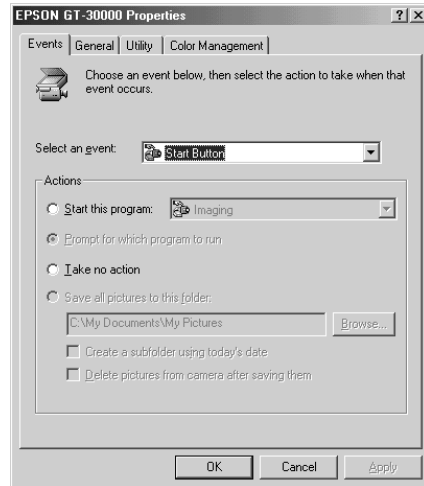


If you don’t want to close Scan Server each time you need to scan locally, you can install TWAIN HS Network and type LOCALHOST in the Network Scanner Address field. Choose TWAIN HS Network as the scanner source in your application.

## Setting Up the Default Scanner on Windows Me

If you have more than one scanner connected to your computer, you can set up the GT-30000 as the default scanner.

1. Open the Windows Control Panel and double-click the **Scanners and Cameras** icon.
2. Double-click the **EPSON GT-30000** icon. You see the EPSON GT-30000 Properties window.
3. Click the **Utility** tab. Make sure **Select as default scanner for EPSON Scan Server** is checked, and then click **OK**.



# Installing the Scanner Server Software for Windows 2000

Before you begin, make sure the GT-30000 is connected to your computer. Also, make sure you've recalibrated your monitor to factory specifications. (See your monitor documentation for instructions.)

Depending on how your computer system was originally set up, you may be asked to insert your Windows 2000 CD-ROM during driver installation. Make sure you have it available, or know where to find the Windows source files on your hard disk (for example, in the Windows folder). If you need help, contact your computer manufacturer.

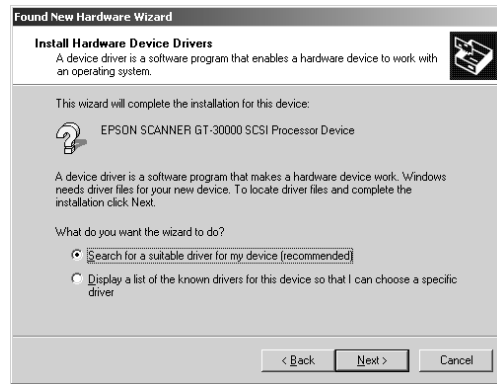


If you've just installed a SCSI interface card, you may be asked to install a SCSI driver at the beginning of installation. Follow the instructions on the screen to install the best driver, then continue with the scanner server installation.

1. Turn on your scanner first, then turn on your computer.
2. When you see the window on the right, insert the EPSON GT-30000 Scanning Tools CD-ROM in your drive and click Next.



3. Select **Search for a suitable driver for my device**, and then click **Next**.



4. Select **CD-ROM drives** and **Specify a location**, if necessary, and click **Next**.



5. Browse to **EPSON\English\WIN2000** on your CD-ROM drive. (The example to the right uses "F" as the CD-ROM drive letter. Your CD-ROM drive letter may be different.) Click **OK** to close the Browse window, and then click **Next**.



6. Follow the instructions on the screen to complete the driver installation.

If you see a message asking for your Windows 2000 CD-ROM, insert it and click **OK** (or click **Browse** and locate the Windows 2000 source files on your hard drive; then click **OK**).

7. When you see the window to the right, click **Yes**.

If prompted for the EPSON Scanners Driver Disk 1, reinsert your EPSON GT-30000 Scanning Tools CD-ROM.

8. Click **Finish** when you see a message that installation is complete.

Continue with the instructions in the next section.



## ***Finishing the Scanner Server Installation on Windows 2000***

Before your computer can share its scanner, you must install EPSON Scan Server. At the same time, you can install other software that came with your scanner. Your scanner comes with a multi-user license (6) for Presto! PageManager, an unlimited license for EPSON TWAIN HS Network and TWAIN HS, and a single-user license for PixTools QuickScan and the ISIS driver. If you want to install them on additional computers, please contact the software manufacturer to purchase additional licenses.

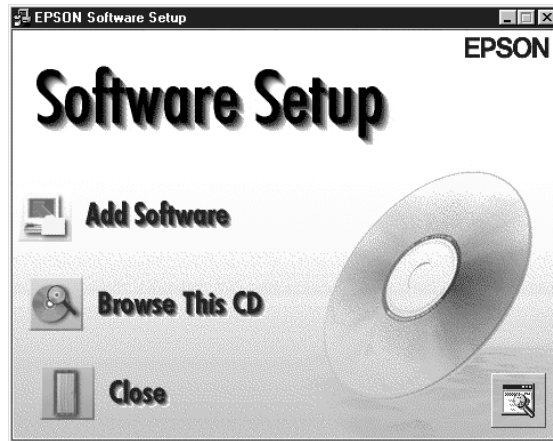


The ISIS driver and PixTools QuickScan cannot be run over a network.

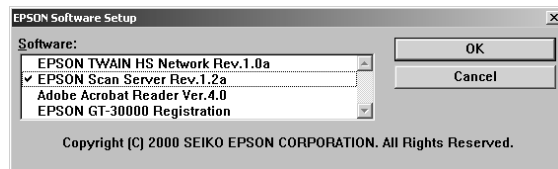
1. If the Select Language window doesn't appear, double-click the **My Computer** icon on your Windows desktop, then double-click the **Epson CD-ROM** icon.
2. Make sure **English** is selected and click **OK**. The Software Setup window appears.



3. Click the **Add Software** button to display the software selection window.



4. Select **EPSON Scan Server**. A check mark appears beside applications selected for installation. If you want to deselect Acrobat Reader or the GT-30000 Registration (as shown), click the application to clear the check mark. Then click **OK**.



You don't need to install EPSON TWAIN HS Network to use the scanner connected to your computer. EPSON TWAIN HS is automatically installed when you install the scanner server software. Only install EPSON TWAIN HS Network if you want to use a GT-30000 attached to another computer.

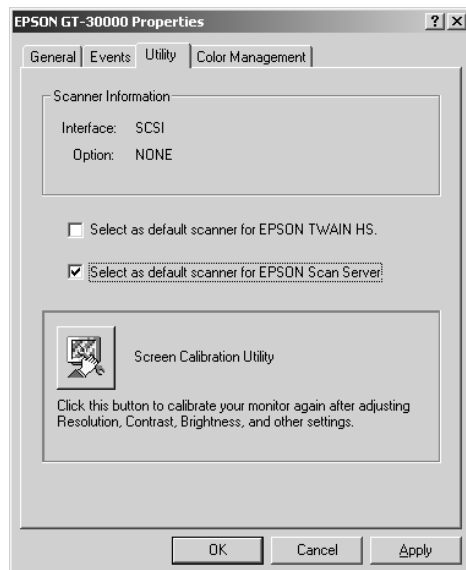
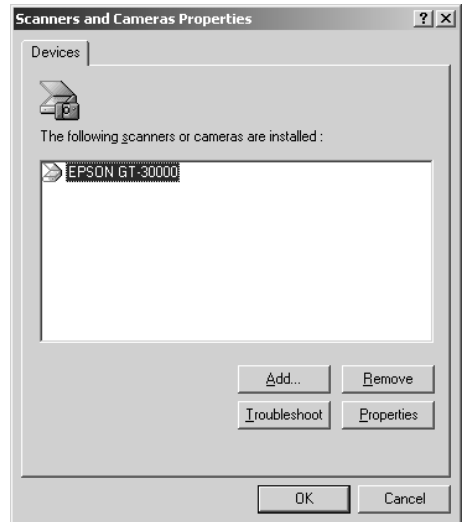
5. Follow the instructions on the screen to install EPSON Scan Server and any other software you selected in the software selection window.
6. Follow the instructions in “Installing Additional Software” on page 49 if you want to install the ISIS driver, PixTools QuickScan, or Presto! PageManager.
7. When you're done installing software, restart your computer.



## Setting Up the Default Scanner on Windows 2000

If you have more than one scanner connected to your computer, you can set up the GT-30000 as the default scanner.

1. Open the Windows Control Panel and double-click the **Scanners and Cameras** icon to open the **Scanners and Cameras Properties** window.
2. Make sure **EPSON GT-30000** is selected, and click the **Properties** button. You see the **EPSON GT-30000 Properties** window.
3. Click the **Utility** tab. Make sure **Select as default scanner for EPSON Scan Server** is checked, and then click **OK**.



# Installing the Scanner Server Software for Windows 98

Follow the instructions in this section to install your EPSON GT-30000 scanner driver and other software on your scanner software CD-ROM. Before you begin, make sure you recalibrate your monitor to factory specifications. (See your monitor documentation for instructions.)

You may be asked to insert your Windows CD-ROM during this procedure. Make sure you have it available, or know where to find the Windows source files on your hard drive. If you need help locating your source files, contact your computer manufacturer.

1. Turn on the scanner first, then turn on your computer. When you see the window on the right, click **Next**. (The Wizard may also say it has found an unknown device.)
2. Select **Search for the best driver for your device**, and click **Next**.
3. Insert the EPSON GT-30000 Scanner Software CD-ROM in your drive.



4. Select **Specify a location**, if necessary. Then browse to **EPSON\English\WIN98** on your CD-ROM drive. Then click **Next**.

(The example on the right shows “E” as the CD-ROM drive. Your CD-ROM drive letter may be different.)

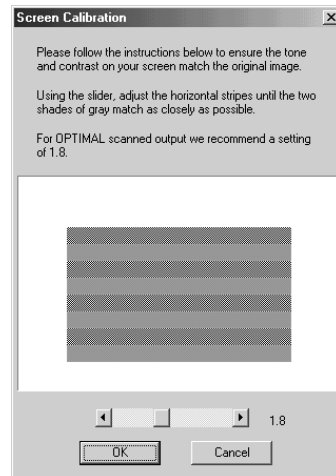


5. Follow the instructions on the screen.

If you see a message asking for your Windows 98 CD-ROM, insert it and click **OK**. (Or, select **Specify a location**, click **Browse**, and locate the Windows 98 source files on your hard drive. Then click **OK**.) When prompted, reinsert your scanner software CD-ROM.

6. When you see the Screen Calibration window, move the slider right or left until the stripes match as closely as possible. (The stripes will not match perfectly. The recommended setting is 1.8.) Then click **OK**.

The EPSON Screen Calibration Utility calibrates the preview image you see in your EPSON TWAIN HS driver to match your monitor settings.



You won't need to change the screen calibration as long as you continue to use the same display. If you need to recalibrate your screen at a later time, double-click the Scanners and Cameras icon in your Windows Control Panel to open the Scanners and Cameras Properties window. In the Devices tab, make sure EPSON GT-30000 is selected, and then click the Properties button to display the EPSON GT-30000 Properties window. Click the Utility tab, and then click the Screen Calibration Utility button.

7. When installation is complete, click **Finish** to return to the Windows desktop.

Continue with the instructions in the next section to install EPSON Scan Server and Acrobat Reader (if necessary).

## Finishing the Scanner Server Installation on Windows 98

Before your computer can share its scanner, you must install EPSON Scan Server. At the same time, you can install other software that came with your scanner. Your scanner comes with a multi-user license (6) for Presto! PageManager, an unlimited license for EPSON TWAIN HS Network and TWAIN HS, and a single-user license for PixTools QuickScan and the ISIS driver. If you want to install them on additional computers, please contact the software manufacturer to purchase additional licenses.

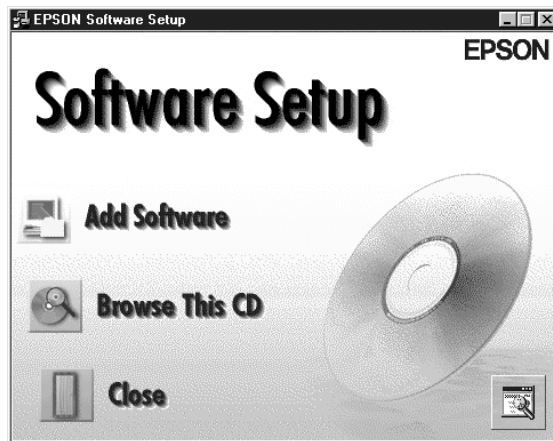


The ISIS driver and PixTools QuickScan cannot be run over a network.

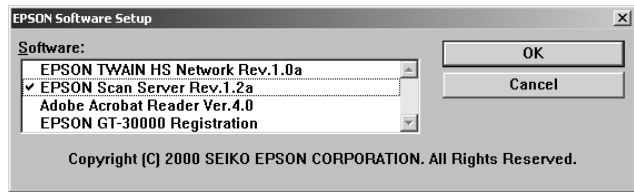
1. Double-click the **My Computer** icon on your Windows desktop, then double-click the **Epson CD-ROM** icon.
2. Make sure **English** is selected and click **OK**. The **Software Setup** window appears.



3. Click the **Add Software** button to display the software selection window.



4. Select **EPSON Scan Server**. A check mark appears beside applications selected for installation.



If you want to deselect Acrobat Reader or the GT-30000 Registration (as shown), click the application to clear the check mark. Then click **OK**.



Do not install EPSON TWAIN HS Network to use the scanner connected to your computer—use EPSON TWAIN HS instead. EPSON TWAIN HS is automatically installed when you install the scanner server software. Only install EPSON TWAIN HS Network if you want to use a GT-30000 connected to another computer.

5. Follow the instructions on the screen.



If you're installing EPSON TWAIN HS Network in order to use a GT-30000 scanner attached to another computer, you'll see a window that asks for the Network Scanner Address (the scanner server's IP address). Enter the IP address for the computer you want to connect to. (See page 94 for instructions.)

6. If you want to install the ISIS driver, PixTools QuickScan, or Presto! PageManager, see page 49 for instructions.
7. When you're done installing software, restart your computer. Then follow the instructions in "Testing Your Scanner Connection (Windows 98)" on page 39 to make sure the scanner is operating properly.

## Setting Up the Default Scanner on Windows 98

If you have more than one scanner connected to your computer and you're running Windows 98, you can set up the EPSON GT-30000 as your default scanner.

1. Open the Windows Control Panel and double-click the **Scanners and Cameras** icon. You see the **Scanners and Cameras Properties** window.

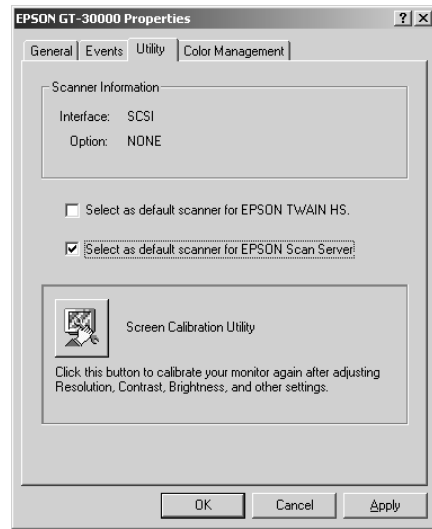


2. Select **EPSON GT-30000**, if necessary, and click the **Properties** button. You see the **EPSON GT-30000 Properties** window.



3. Click the **Utility** tab. Make sure **Select as default scanner for EPSON Scan Server** is checked, and then click **OK**.
4. Click **OK** to close the EPSON GT-30000 Properties window.

The EPSON GT-30000 remains the default scanner until a different default scanner is selected.





# Installing the Scanner Server Software for Windows 95

Follow the instructions in this section to install your EPSON GT-30000 scanner driver and other software on your scanner software CD-ROM. Before you begin, make sure you recalibrate your monitor to factory specifications. (See your monitor documentation for instructions.)

To install your software on the client computers, see “Setting Up Client Computers” on page 92 instead.

You may be asked to insert your Windows CD-ROM during this procedure. Make sure you have it available, or know where to find the Windows source files on your hard drive. If you need help locating your source files, contact your computer manufacturer.

1. Turn on your scanner first, then turn on your computer. When you see the window on the right, click Next.



2. Click Other Locations.

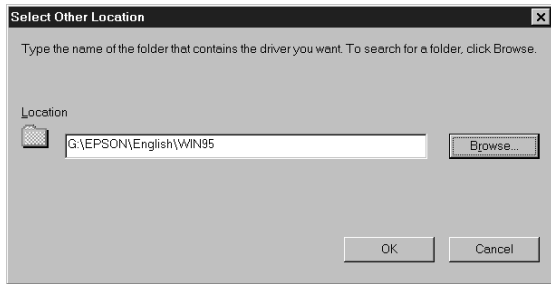


3. Make sure your scanner software CD-ROM is in the drive. Browse to the following location on your CD-ROM drive: **EPSON\English\WIN95**. Then click **OK**.

(The example on the right shows “G” as the CD-ROM drive. Your CD-ROM drive letter may be different.)

4. When you see the window on the right, click **Finish**. Then restart your computer.

Continue with the instructions in the next section to install EPSON Scan Server and Acrobat Reader (if necessary).



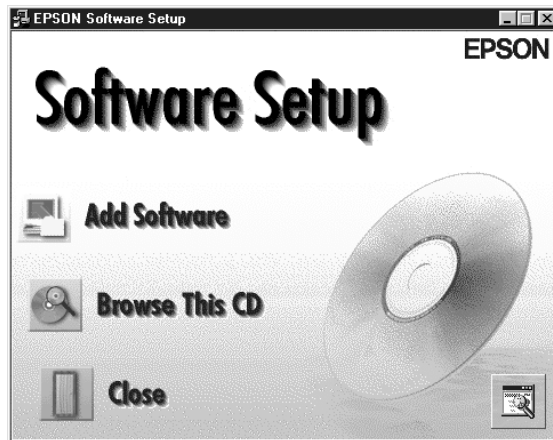
## Finishing the Scanner Server Installation on Windows 95

Before your computer can share its scanner, you must install EPSON Scan Server. At the same time, you can install other software that came with your scanner. Your scanner comes with a multi-user license (6) for Presto! PageManager, an unlimited license for EPSON TWAIN HS Network and TWAIN HS, and a single-user license for PixTools QuickScan and the ISIS driver. If you want to install them on additional computers, please contact the software manufacturer to purchase additional licenses.

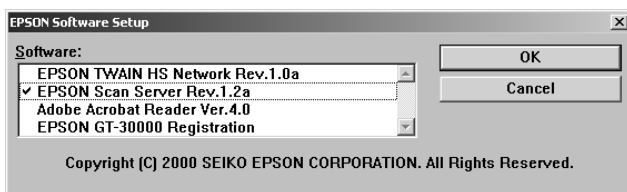


The ISIS driver and PixTools QuickScan cannot be run over a network.

1. Insert your scanner software CD-ROM if it's not already in your CD-ROM drive.
2. Double-click the **My Computer** icon on your Windows desktop, then double-click the **Epson CD-ROM** icon.
3. Make sure **English** is selected and click **OK**. The **Software Setup** window appears.
4. Click the **Add Software** button to display the software selection window.



5. Select **EPSON Scan Server**. A check mark appears beside applications selected for installation.



If you want to deselect Acrobat Reader or the GT-30000 Registration (as shown), click the application to clear the check mark. Then click **OK**.



Use EPSON TWAIN HS to scan from the EPSON GT-30000 connected to your computer. Only install EPSON TWAIN HS Network if you want to access a GT-30000 scanner connected to another computer.

6. If you're installing EPSON TWAIN HS, follow the instructions on the screen. When you see the window on the right, make sure **SCSI** and **GT-30000** are selected under Scanner Selection.

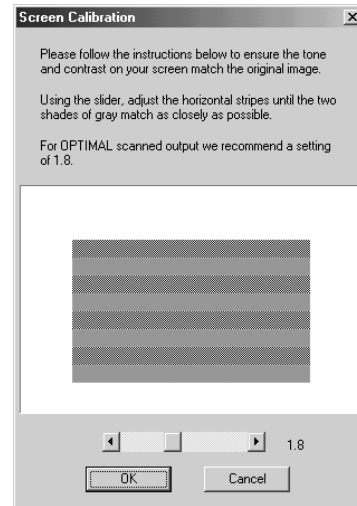


If you're installing EPSON TWAIN HS Network in order to use a GT-30000 scanner attached to another computer, you'll see a window that asks for the Network Scanner Address (the scanner server's IP address). Enter the IP address for the scanner server you want to connect to. See page 94 for instructions.

7. Click **Test** to check scanner operation. If the scanner is communicating with your computer, you see **Status: Device Reader** under Scanner Information. Click **OK** to close the window.

- When you see the Screen Calibration window, move the slider right or left until the stripes match as closely as possible. (The stripes will not match perfectly and the recommended setting is 1.8.) Then click **OK**.

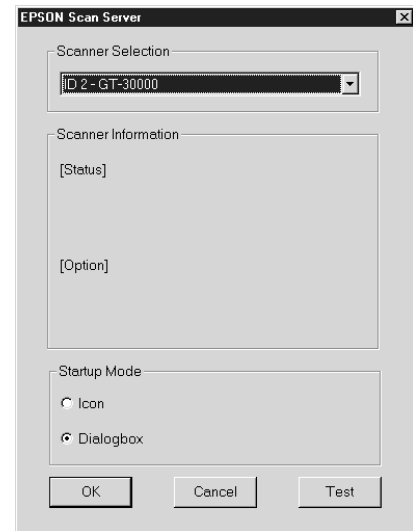
The EPSON Screen Calibration Utility calibrates the preview image you see in your EPSON TWAIN HS driver to match your monitor settings.



- Follow the instructions on the screen to install EPSON Scan Server. When you see the window on the right, make sure **GT-30000** is selected under Scanner Selection.

Select either **Icon** or **Dialogbox** as the scanner server start up mode. (See “Changing the Scanner Server Start Up Mode” on page 91 for details about the start up mode.)

- Click **Test** to test scanner operation. **OK. Scanner available** appears under Status if the scanner is communicating with the scanner server. Then click **OK**.



If you want to share a different network scanner with the client computers, you can access the EPSON Scan Server window at any time by double-clicking the EPSON Scan Server icon in the Windows Control Panel. Then select the scanner you want in the Scanner Selection list.

- Follow the instructions on the screen to complete installation of additional software you selected in the software selection window.
- If you want to install the ISIS driver, PixTools QuickScan, or Presto! PageManager, see page 49 for instructions. When you’re done installing software, restart your computer.

## Installing the Scanner Server Software for Windows NT 4.0

Before your computer can share its scanner, you must install EPSON Scan Server. At the same time, you can install other software that came with your scanner. Your scanner comes with a multi-user license (6) for Presto! PageManager, an unlimited license for EPSON TWAIN HS Network and TWAIN HS, and a single-user license for PixTools QuickScan and the ISIS driver. If you want to install them on additional computers, please contact the software manufacturer to purchase additional licenses.

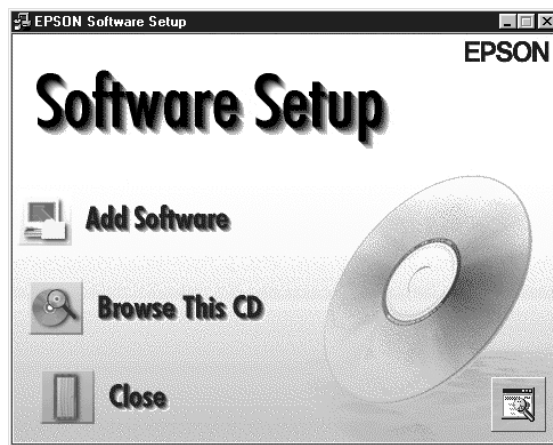


The ISIS driver and PixTools QuickScan cannot be run over a network.

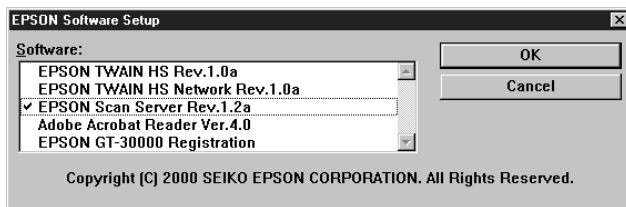
1. Insert your scanner software CD-ROM if it's not already in your CD-ROM drive.
2. Double-click the My Computer icon on your Windows desktop, then double-click the Epson CD-ROM icon.
3. Make sure English is selected and click OK. The Software Setup window appears.



4. Click the Add Software button to display the software selection window.



5. Select **EPSON Scan Server**. A check mark appears beside applications selected for installation.

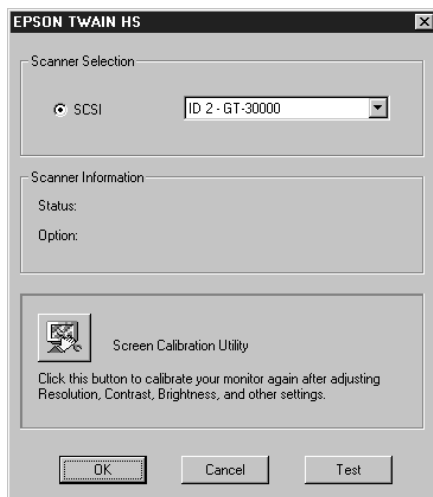


If you want to deselect Acrobat Reader or the GT-30000 Registration (as shown), click the application to clear the check mark. Then click **OK**.



Select EPSON TWAIN HS if you want to scan from the EPSON GT-30000 connected to your computer. Only install EPSON TWAIN HS Network if you want to access a network scanner connected to another computer.

6. If you're installing EPSON TWAIN HS, follow the instructions on the screen. When you see the window on the right, make sure **SCSI** and **GT-30000** are selected under Scanner Selection.

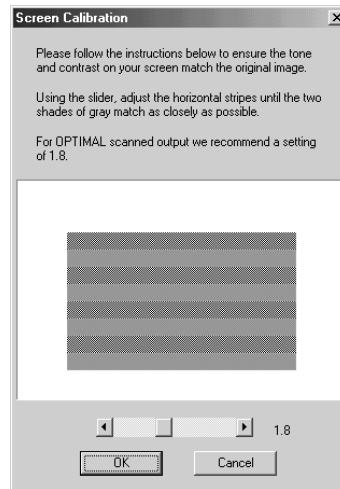


If you're installing EPSON TWAIN HS Network in order to use a GT-30000 scanner attached to another computer, you'll see a window that asks for the Network Scanner Address (the scanner server's IP address). Enter the IP address for the scanner server you want to connect to. See page 94 for instructions.

7. Click **Test** to check scanner operation. If the scanner is communicating with your computer, you see **Status: Device Reader** under Scanner Information. Click **OK** to close the window.

- When you see the Screen Calibration window, move the slider right or left until the stripes match as closely as possible. (The stripes will not match perfectly and the recommended setting is 1.8.) Then click OK.

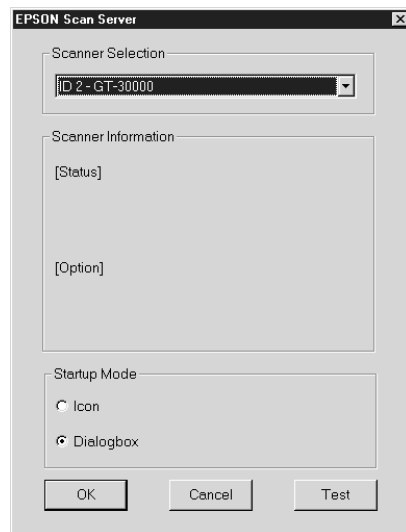
The EPSON Screen Calibration Utility calibrates the preview image you see in your EPSON TWAIN HS driver to match your monitor settings.



- Follow the instructions on the screen to install EPSON Scan Server. When you see the window on the right, make sure GT-30000 is selected under Scanner Selection.

Select either Icon or Dialogbox as the scanner server start up mode. (See “Changing the Scanner Server Start Up Mode” on page 91 for details about the start up mode.)

- Click Test to test scanner operation. OK. Scanner available appears under Status if the scanner is communicating with the scanner server. Click OK to close the window.



If you want to share a different network scanner with the client computers, you can access the EPSON Scan Server window at any time by double-clicking the EPSON Scan Server icon in the Windows Control Panel. Then select the scanner you want in the Scanner Selection list.

- Follow the instructions on the screen to complete installation of any other software you've selected in the EPSON Software Setup window. If you're done installing software, restart your computer. Refer to “Installing Additional Software” on page 49 if you want to install the ISIS driver, PixTools QuickScan, or Presto! PageManager.

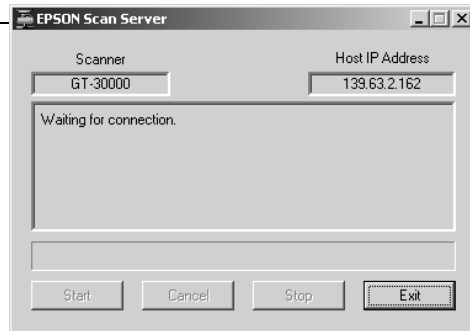



## Changing the Scanner Server Start Up Mode


When you installed the software, you set up the Scan Server to start in either Dialog Box or Icon mode.

In Dialog Box mode, the following dialog box appears whenever you start EPSON Scan Server. (The message **Waiting for connection** in the status area indicates that the scanner is waiting for a connection to a client computer.)

Click here and select Taskbar Icon to switch to Icon mode.



In Icon mode, the  EPSON Scan Server icon appears on the Windows taskbar when you start EPSON Scan Server.

- To change from Dialog Box mode to Icon mode, click the scanner icon in the upper left corner of the dialog box and select **Taskbar Icon** from the list.
- To change from Icon mode to Dialog Box mode, right-click the  EPSON Scan Server icon on the taskbar and click **Taskbar Icon** to deselect it.

Your setting takes effect when you exit and restart EPSON Scan Server. See page 97 for instructions on starting EPSON Scan Server.



Make sure no client computer is accessing the scanner server when you exit EPSON Scan Server.

---

# Setting Up Client Computers

To set up a client computer, you'll need to know the IP address or host name of the scanner server. Also, make sure the TCP/IP protocol is installed. (See Appendix A, "Installing the TCP/IP Protocol," for instructions.)

## ***Installing EPSON TWAIN HS Network***

You must install EPSON TWAIN HS Network on the client computer before the client can use the network scanner. At the same time, you can install other software that came with your scanner. Your scanner comes with a multi-user license (6) for Presto! PageManager, an unlimited license for EPSON TWAIN HS Network and TWAIN HS, and a single-user license for PixTools QuickScan and the ISIS driver. If you want to install them on additional computers, please contact the software manufacturer to purchase additional licenses.

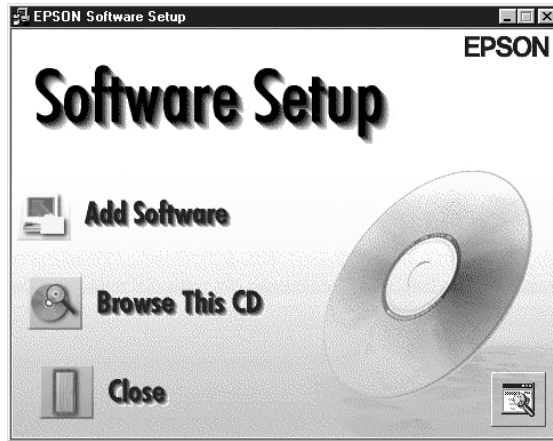


The ISIS driver and PixTools QuickScan cannot be run over a network.

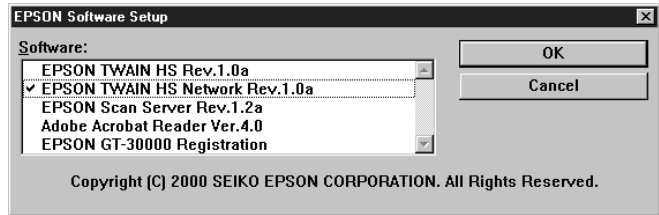
1. Insert the EPSON GT-30000 Scanner Software CD-ROM in the CD-ROM drive. If the Select Language window doesn't appear, double-click the **My Computer** icon on your desktop, and then double-click the **Epson CD-ROM** icon.
2. Make sure **English** is selected and click **OK**. The Software Setup window appears.



3. Click the Add Software button to display the software selection window.



4. Select EPSON TWAIN HS Network. A check mark appears beside applications selected for installation.



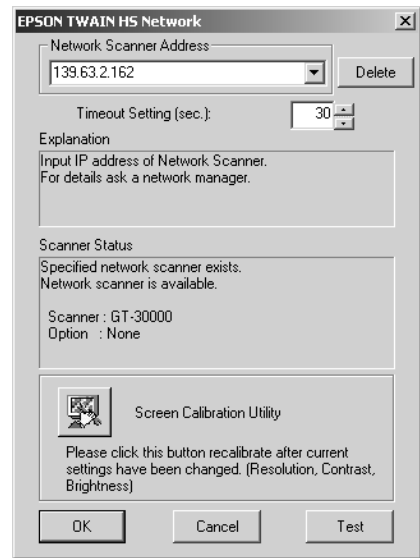
If you want to deselect

Acrobat Reader or the GT-30000 Registration (as shown), click the application to clear the check mark. Then click OK.



If you're installing the scanner software on Windows 95 or Windows NT, click EPSON TWAIN HS to deselect it. EPSON TWAIN HS only works if the scanner is connected to your computer.

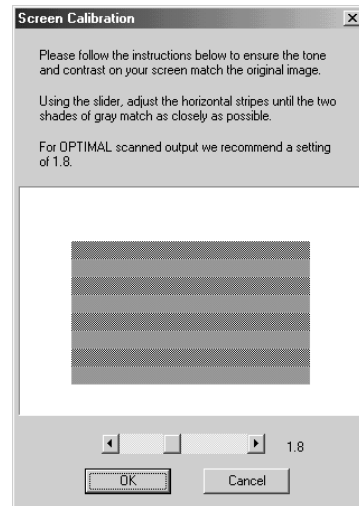
- Follow the instructions on the screen to continue the installation. When you see the window to the right, enter the IP address of the scanner server in the Network Scanner Address box.
- Click **Test** to test the connection. If your computer is communicating with the scanner server and the scanner is on, you see a message that the scanner is available. Then click **OK** to save your settings.



If you need to connect to a different GT-30000 scanner or change the timeout setting, you can open the EPSON TWAIN HS Network window any time by double-clicking the EPSON TWAIN HS Network icon in the Control Panel. You can enter up to five IP addresses or host names in the Network Scanner Address box. You can remove a network scanner address by selecting it in the list and clicking the Delete button.

- Follow the instructions on the screen. When you see the Screen Calibration window, move the slider right or left until the stripes match as closely as possible. (The stripes will not match perfectly. The recommended setting is 1.8.) Then click **OK**.

The EPSON Screen Calibration Utility calibrates the preview image you see in your EPSON TWAIN HS driver to match your monitor settings.





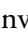
You won't need to change the screen calibration as long as you continue to use the same display. If you need to recalibrate your screen at a later time, double-click the EPSON TWAIN HS Network icon in the Control Panel to open the EPSON HS Network window. Then click the Screen Calibration Utility button at the bottom of the window.


8. Follow the instructions on the screen to complete installation of any other software you've selected in the EPSON Software Setup window.
9. If you want to install the ISIS driver, PixTools QuickScan, or Presto! PageManager, see page 49 for instructions. When you're done installing software, restart your computer.

---



# Using a Network Scanner

Here are a few guidelines for network scanning:

- Turn on the scanner first. The scanner server must be turned on and running EPSON Scan Server.
- From a host application (such as Presto! PageManager or Adobe Photoshop) on the client computer, start EPSON TWAIN HS Network to establish a connection to the scanner server. Only one client computer can access the scanner server at a time. (See “Starting EPSON TWAIN HS Network” on page 98 for instructions.)
- Choose your settings, then place your document on the scanner or in the automatic document feeder. (See Chapter 3, “How to Scan,” for more information.)
- Start the scan. Although this can be done from EPSON TWAIN HS Network on the client computer, it may be more convenient to press the scanner’s  Start button or to start the scan from the scanner server. A progress meter appears on both the scanner server and client computer as the image is pre-scanned, then scanned.

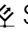

If you want to scan more than one image, place your second image on the document table and press the scanner’s  Start button again. Repeat this step for every image you want to scan. (The settings you chose for the first image apply to these images too.)




The  Start button is only available when you use EPSON TWAIN HS to access a scanner connected to your computer and you are running Windows Me, Windows 2000, or Windows 98. If you are running Windows 95 or Windows NT, the  Start button is disabled.

- When you return to the client computer, your scanned images appear in the host application’s window. Close EPSON TWAIN HS Network to end your connection to the scanner server and allow other client computers to use the scanner.



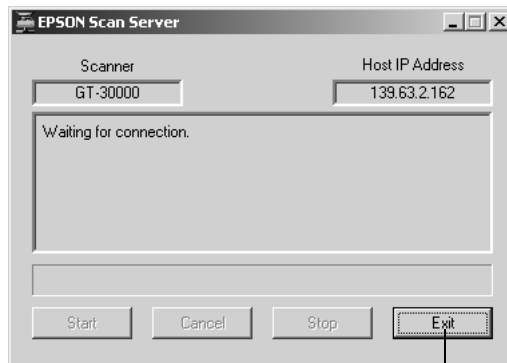
When you press the  Start button, some applications automatically close the client computer’s connection to the scanner server when the scan is finished. You can’t use the  Start button to scan multiple images if you’re using these applications.

## Starting EPSON Scan Server

EPSON Scan Server starts automatically whenever the scanner server is turned on. When EPSON Scan Server is running, you'll see either the EPSON Scan Server dialog box, or the  EPSON Scan Server icon on the Windows taskbar. If you need to start EPSON Scan Server manually, click **Start, Programs, EPSON Scan Server**, and then select **EPSON Scan Server**.

You can quit EPSON Scan Server at any time. Just click the **Exit** button on the EPSON Scan Server dialog box.

Before you exit, make sure no client computers are trying to use the scanner. Don't exit if the status area of the EPSON Scan Server dialog box indicates that you are connecting to a client. Wait until you see the message **Waiting for connection**.



Click to exit



If you installed EPSON TWAIN HS on the scanner server so that you could make a direct connection to the scanner, remember that you must exit EPSON Scan Server to use EPSON TWAIN HS. EPSON Scan Server disables EPSON TWAIN HS.

## Starting EPSON TWAIN HS Network

When you start EPSON TWAIN HS Network on your client computer, you connect to the scanner server. Only one client computer can access the scanner server at a time. Follow these steps:

1. Start your host application.
2. Select EPSON TWAIN HS Network as your source, or scanner driver. (You need to do this step only once.)

For example, if you're using Presto! PageManager for EPSON as your host application, choose **Select Source** from the File menu. In the Select Source window, choose **EPSON TWAIN HS Network** and click **Select**.



The command you choose from the File menu depends on the host application. With some applications, for example, you might choose Import or Select TWAIN\_32 Source.

3. Start EPSON TWAIN HS Network.


If your host application is Presto! PageManager for EPSON, choose **Acquire** from the File menu. When EPSON TWAIN HS Network starts, the EPSON TWAIN HS Network main menu appears and you connect to the scanner server.

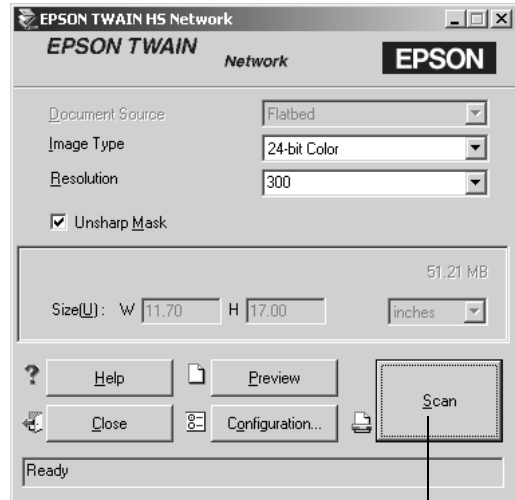
Since the settings and controls for EPSON TWAIN HS Network are the same as those for EPSON TWAIN HS, see “Step-by-Step Scanning Instructions” on page 56 for scanning instructions. For more detailed information about the settings, see the *EPSON GT-30000 Reference Guide* on your scanner software CD-ROM.



## Starting a Scan

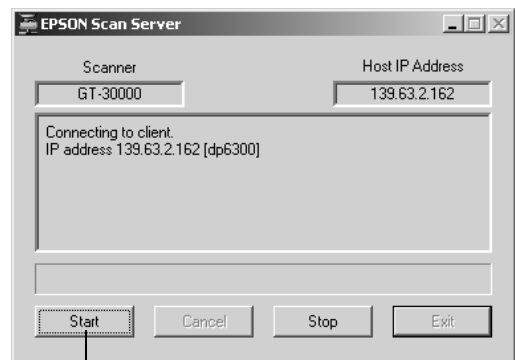
You can start a scan on your network scanner in several ways. However, the client computer must be running EPSON TWAIN HS Network to connect to the scanner server.

- You can start EPSON TWAIN HS Network on the client computer from a host application, make your scan settings, and click the **Scan** button on the EPSON TWAIN HS Network main window. The scanned image is imported into your host application's window.
- You can press the  **Start** button on the scanner to send the scanned image to the client computer that is currently connected to the scanner server.



Click to start a scan from the client computer

- You can click the **Start** button on the EPSON Scan Server dialog box to send the scanned image to the client computer currently connected to the scanner server.



Click to start a scan from the scanner server

## ***Stopping a Scan in Progress***

You can stop a scan in progress from either the client computer or the scanner server:

- To cancel a scan from the client computer, click the **Cancel** button on the Progress bar.
- To cancel from the scanner server, click the **Cancel** button at the bottom of the EPSON Scan Server dialog box.
- To break the connection between the client computer and the scanner server, click the **Stop** button on the EPSON Scan Server dialog box. This closes EPSON TWAIN HS Network on the client computer and allows other client computers to connect to the scanner server.

## Chapter 5

# Maintaining and Transporting Your Scanner

This chapter describes basic maintenance instructions and tells you how to transport your scanner safely.

---

## Cleaning the Scanner

To keep your scanner operating at its best, you should clean it periodically. Before cleaning, unplug the power cord. Then clean the outer case using a soft cloth with mild detergent dissolved in water.

If the document table glass gets dirty, clean it with a soft, dry, lint-free cloth. If the glass is stained with grease or other hard-to-remove material, use a small amount of glass cleaner on a soft cloth to remove it. Wipe off any remaining liquid with a dry, lint-free cloth.

Be sure there's no dust on your document table. Dust can cause white spots to appear in your scanned image.



Always unplug the scanner before cleaning.

Never use an abrasive brush or cleaning product to clean the document table. A damaged glass surface can decrease the scanning quality.

Never use alcohol, thinner, or corrosive solvent to clean the scanner. These chemicals can damage the scanner components and case.

Don't spray lubricants or spill liquid into the scanner mechanism or electronic components. This could permanently damage them.

Never open the scanner case.

Unplug the scanner and consult your dealer or contact EPSON if the power cord or plug is damaged, if liquid has entered the scanner, if the scanner has been dropped or the case damaged, or if the scanner does not operate normally or exhibits a distinct change in performance.

---

## Replacing the Fluorescent Lamp

The luminosity of the fluorescent lamp declines over time. If the lamp breaks or becomes too dim to operate normally, the scanner stops working and both the **READY** and **ERROR** lights flash. If this happens, the lamp assembly may need to be replaced. Contact EPSON. (See “Where To Get Help” on page 118.)



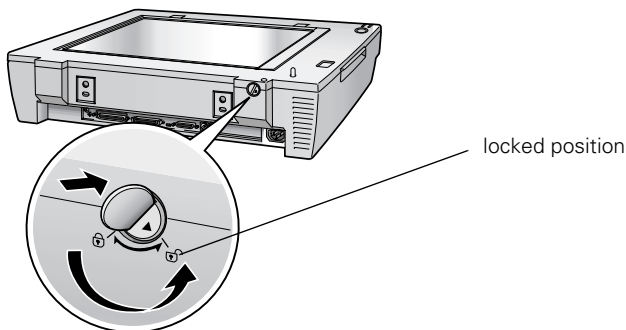
Never open the case of the scanner. If you think repairs or adjustments are necessary, consult EPSON.

---

## Transporting the Scanner

If you need to transport the scanner or store it for an extended period, you must secure the carriage beforehand. Turn on the scanner and wait until the carriage moves to the home position (the left side). Then turn off the scanner.

Turn the transportation lock to the locked position to secure the carriage.



If the scanner is inoperable, the carriage may not automatically return to the home position. If it doesn't, raise the right side of the scanner and hold it up until the carriage comes to rest at the left side. Then turn the transportation lock to the locked position.

# Chapter 6

## Solving Problems

This chapter explains how to interpret the signals from your scanner indicator lights, and helps you diagnose and solve scanner problems. It also describes how to uninstall your software (if necessary), fix problems with the automatic document feeder, and get help from EPSON and other software manufacturers.

For additional troubleshooting tips, see your electronic *EPSON GT-30000 Reference Guide*.

---

### Scanner Lights

The tables below explain the lights on the scanner.

#### *Scanner indicator lights*

Light	Light status	Scanner status
READY	○	Ready to scan images
	◐ (flashing)	Scanning is in progress or the scanner is being initialized
ERROR	○	An error occurred; see the following table for more information
	◐ (rapidly flashing)	

○ = on, ● = off, ◐ = flashing

*Error conditions*

<b>ERROR light</b>	<b>READY light</b>	<b>Status</b>
○	○	Command error: The scanner has received incorrect commands from your scanning software. Try rescanning the document.
◐	●	Interface error: Check that your scanner is securely connected to your computer, and then turn the scanner off and back on again.
◑	◑	Fatal error: Check that the transportation lock is released, and then turn the scanner off and on again. If this doesn't solve the problem, call your EPSON dealer.
●	○	Option error: There's a problem with an installed option. Check to make sure the automatic document feeder is flat against the document table. Check that your option is securely connected to the Option connector at the back of the scanner. Finally, check that the automatic document feeder isn't out of paper and doesn't have a paper jam. If these suggestions don't solve the problem, call your EPSON dealer.

○ = on, ● = off, ◐ = flashing

---

# Problems and Solutions

If you're having problems, this section answers some of the most common questions. For additional software troubleshooting tips, see your electronic *EPSON GT-30000 Reference Guide*.

## **Setup Problems**

**Your system doesn't recognize the scanner**

**or**

**EPSON TWAIN HS (or EPSON TWAIN HS Network) doesn't appear in the list where you select your scanner.**

- Check your cable connections. If your cable is securely connected to both the scanner and computer, try using a high quality, shielded SCSI cable, and be sure to restart your computer after you change the cable.
- Make sure your scanner is on. If you opened your host application before you turned on the scanner, close your application and reopen it. If that doesn't work, restart your system.
- Check the Plug and Play option for your computer; it should be active (Windows 95, 98, 2000 and Me only).

- Turn off both your scanner and computer. Then turn on your scanner before you turn on the computer.
- Make sure your SCSI board is installed correctly.
- If the SCSI board is found, but not the scanner, check the SCSI terminator and ID. Make sure the SCSI ID doesn't conflict with another SCSI device.
- If you've replaced your SCSI board or changed the SCSI ID, you may need to uninstall and reinstall your scanner software.
- Check for IRQ conflicts with built-in options.
- Check the System Device Manager in the Windows Control Panel. If there is an **Unknown Device** icon, select it and click **Remove**.
- If all else fails, uninstall and reinstall your software. See the instructions for uninstalling software beginning on page 114.

**You are unable to connect to the scanner when you click the Test button.**

- Check to make sure your cable is securely connected to both the scanner and computer.
- Try a different cable. Try using a high quality, shielded SCSI cable, and be sure to restart your computer after you change the cable.
- Turn off both the scanner and your computer. Then turn on your scanner before you turn on the computer.
- Make sure your system is correctly terminated and there are no conflicting SCSI IDs.
- If you're using a network scanner, check with your network administrator to see whether your computer is on a different router than the scanner server. If it is, make sure the router for the scanner server is configured to allow traffic from your network.
- Uninstall and reinstall your software. See the instructions for uninstalling software beginning on page 114.

## ***Scanner Problems***

**The READY light doesn't come on or flashes.**

- Check the scanner power cord. Make sure the power cord is securely plugged into the scanner and the power outlet, and that the scanner is turned on.
- Check that the power outlet is working and provides sufficient power for the scanner.
- If you're using the automatic document feeder and both the READY and ERROR lights are off, make sure the automatic document feeder is closed (lying flat against the document table). Also, make sure that the automatic document feeder doesn't have a paper jam and isn't out of paper.

**You installed a ZIP drive.**

Your ZIP drive may be interfering with your scanner. Disconnect your ZIP drive, then try using the scanner.



### **The scanner doesn't scan your image.**

- Make sure the scanner is ready to scan. Wait until the **READY** light stops flashing and remains on.
- Check your image source setting. Make sure you selected **EPSON TWAIN HS** (or **EPSON TWAIN HS Network**).
- Run the scanner test to make sure the scanner is communicating with your computer. For Windows Me, Windows 2000, or Windows 98, see “Testing Your Scanner’s Operation” on page 16. For Windows 95 or NT, open the **EPSON TWAIN HS** window (or **EPSON TWAIN HS Network** window) and click the **Test** button.
- Make sure you have enough memory to scan your image. If you’re scanning a large image or scanning at a high resolution, try closing other programs before you scan. If your computer still doesn’t have enough memory to process the image, try scanning at a lower resolution, or select part of the

image to scan. If you still cannot scan, you may need to upgrade your RAM.

- If you’re using a network scanner, the scanner may have timed out. Check the time out setting on the **EPSON TWAIN HS Network** window and increase the value, if necessary.

### **You’re using the automatic document feeder.**

- Make sure the unit is correctly installed and connected to the scanner’s **OPTION** interface.
- Make sure you selected the correct **Document Source** setting for your image.
- Make sure your automatic document feeder is closed (lying flat against the document table).
- If paper is jammed in your automatic document feeder, see “Fixing Paper Jams” on page 116.

## ***Software Problems***

### **You can't start EPSON TWAIN HS.**

- Make sure the scanner's **READY** light is on.
- Check to make sure your cable is securely connected to both the scanner and computer.
- Try a different cable. Try using a high quality, shielded SCSI cable, and be sure to restart your computer after you change the cable.
- Turn both the scanner and computer off, then turn on the scanner before you turn on the computer.
- Make sure the SCSI interface board is installed correctly in your computer.
- Check that your system recognizes your scanner and SCSI board. Check the System Device Manager in the Windows Control Panel. For Windows NT, check the SCSI Adapters dialog in the Windows Control Panel.
- Check for conflicts in your SCSI ID setting, I/O address, the interrupt setting for your SCSI board, and other settings. For information about the SCSI

ID setting, see "Connecting the Scanner to Your Computer" on page 17. For information about choosing other settings, see your computer manual.

- If you have more than one scanner connected to your computer, make sure the GT-30000 is selected as your default scanner. For Windows Me, Windows 2000, or Windows 98, check the Utility tab on the GT-30000 Properties window. For Windows 95 or NT, check the EPSON TWAIN HS window.
- Make sure you selected EPSON TWAIN HS as your TWAIN source.
- If you have an older EPSON scanner and have a previous version of EPSON TWAIN installed, uninstall the older version.
- If none of these solutions help, uninstall your software, then reinstall it. See the instructions for uninstalling software beginning on page 114.

**You can't start EPSON TWAIN HS Network from a client computer.**

- Make sure the scanner and the scanner server are both powered on, and that the Scan Server is running on the server.
- Make sure the cables connecting the scanner, the scanner server, and the client computer meet system requirements and are properly connected.
- Make sure the correct IP address for the scanner server is entered in the EPSON TWAIN HS Network setup window for the client computer.
- Make sure the network interface card is installed correctly in both the scanner server and the client computer.
- Make sure both the scanner server and client computer are running the TCP/IP protocol.
- If more than one scanner is connected to the scanner server, make sure the GT-30000 is selected as the default scanner.

**The scanner software doesn't work properly.**

- Make sure the system requirements (for example, the operating system version) are correct for your software. See page 133.
- Check your computer's memory. If you're running other software at the same time, using RAM resident programs, or have many device drivers, the computer may not have enough memory. (See your software and computer manuals.) If you're scanning a large image or scanning at a high resolution, your computer may not have enough memory to process the image.
- Make sure that your software is correctly installed and set up. If all else fails, uninstall your software, then reinstall it.

**You can't select ADF Single-Sided or ADF Double-Sided as your Document Source.**

Make sure the ADF is installed correctly, and that it's securely connected to the **OPTION** connector. If you need to reinstall the ADF or connect it to the **OPTION** connector, restart your computer afterward.

## Scanning Problems



### **The file size is too big.**

Adjust your scan settings. Try setting at a lower resolution (dpi), or scan only part of the image.



### **Your scanned image is faint or has gaps.**

- Check the brightness. Decrease the software or driver's brightness setting.
- Try adjusting the **Gamma** and **Exposure** settings in the Image Controls window.
- Check the condition of your original. If the document is damaged, dirty, or wrinkled, these imperfections will show up in your scan.
- Make sure the document is placed flat against the document table.



**Your scanned image is blurred or distorted.**

- Check the position and condition of your document. Make sure the document is placed flat against the scanner's document table glass. If only part of the image is blurred, part of your document may be wrinkled or warped.
- Make sure the document table glass is clean.
- Make sure the scanner is on a flat, stable surface.



**The edges of the document aren't scanned.**

- Check the position of your document. Adjust it so that the image is within the glass area of the document table.
- If colors are patchy or distorted at the edges of the image, the document may be too thick, or there may be outside light interfering with the scan.



### **Your image scans at an angle.**

Check the position of your document. It may be placed at an angle on the document table. Align it so the horizontal and vertical edges are carefully aligned with the scales on the top and side of the document table.

### **Straight lines in the image come out jagged.**

Make sure the document is aligned with the scales on the top and side of the document table.

### **A line of dots is missing from the image.**

- When a line of dots is missing from the scanned image on your screen, the scanner sensor has malfunctioned. Contact your EPSON dealer.
- When a line of dots is missing from your printouts, your printer has malfunctioned. See your printer manual.

### **The colors in your scanned image look different than the colors in the original document.**

- Experiment with the Unsharp Mask setting. Check or uncheck the Unsharp Mask box in the EPSON TWAIN HS main window.
- Try different combinations of gamma and color settings in your scanner software.
- If you're using the automatic document feeder, make sure it's closed when scanning.

### **The printed image is larger or smaller than the original.**

You can't judge the size of the printed image by what you see on your screen. The image size settings in your scanner software determine the size of the printed image.

**Moiré (cross-hatch) patterns appear in the image when you perform halftone scanning.**

- Make the image size slightly smaller.
- Use a transparent sheet between the document and the document table to defocus the image.
- Reposition the document on the document table. Try positioning the document at a slight angle.
- Make sure **Unsharp Mask** is deselected in the **Destination** window.
- Select **24-bit Color De-screening** as your **Image Type**, or select **On** for **De-screening** in the **Image Type** window.

**You can't print scanned images, or the printed image looks garbled.**

- Make sure your printer is securely connected to your computer and that you're using the correct cable.
- Make sure the correct printer is selected in your printer software.

**OCR scanning produces poor character recognition.**

- Make sure your document is properly aligned on the flatbed.
- Adjust the **Threshold** setting in the **Image Controls** window.
- Increase the resolution to 720 dpi.

**The image doesn't scan, or you can only scan a few dots.**

- Make sure the document is face down on the document table.
- If you're using an automatic document feeder, make sure the original document is inserted face up.

**A line of dots is always missing from the image.**

- When a line of dots is missing from the scanned image on your screen, the scanner sensor has malfunctioned. Contact your dealer.
- When a line of dots is missing from your printouts, your print head has malfunctioned. See your printer manual.

---

# Uninstalling the Scanner Software

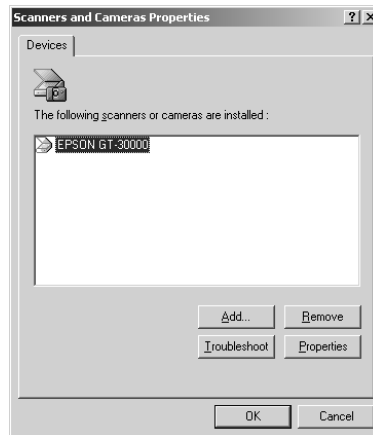
If you've tried every other solution and your system still doesn't recognize your scanner, try uninstalling the scanner driver software, as described in this section, then reinstalling it.

## *Uninstalling EPSON TWAIN HS*

Follow the procedure for uninstalling EPSON TWAIN HS on your system.

### *Windows Me, Windows 2000, and Windows 98*

1. Open the Windows Control Panel and double-click the **Scanners and Cameras** icon.
2. On the **Devices** tab, select **EPSON GT-30000**.
3. Click the **Remove** button. Then click **OK** to close the window.
4. Restart your computer.



### *Windows 95 and Windows NT*

1. Click **Start**, then click **Programs**, **EPSON Scanner**, **EPSON TWAIN HS Uninstall**.
2. When you're finished, restart your computer.



## ***Uninstalling EPSON TWAIN HS Network***

1. On the Start menu, click Programs, EPSON Network Scanner, EPSON TWAIN HS Network Uninstall.
2. When you're finished, restart your computer.

## ***Uninstalling EPSON Scan Server***

1. Click Start, Programs, EPSON Scan Server, and select EPSON Scan Server Uninstall.
2. When you're finished, restart your computer.

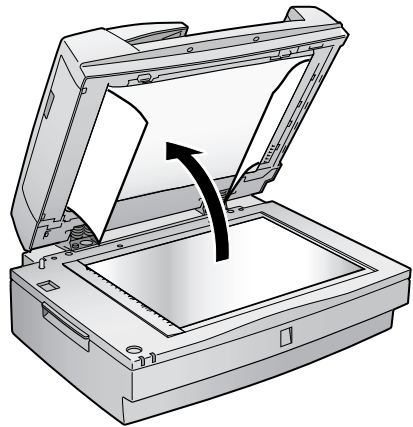
---

# Solving Problems with the Automatic Document Feeder

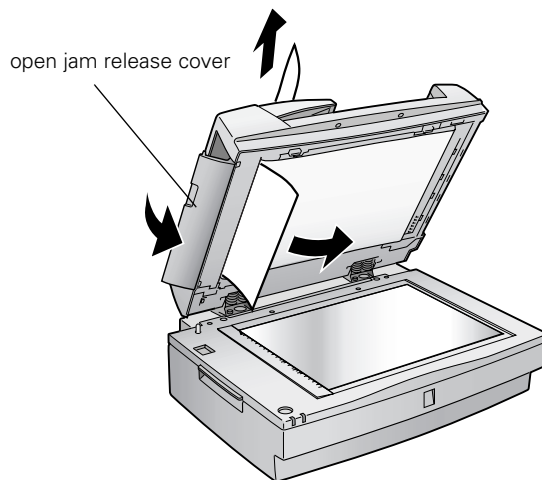
This section gives you instructions for fixing paper jams and adjusting the scanning position for the automatic document feeder (ADF).

## *Fixing Paper Jams*

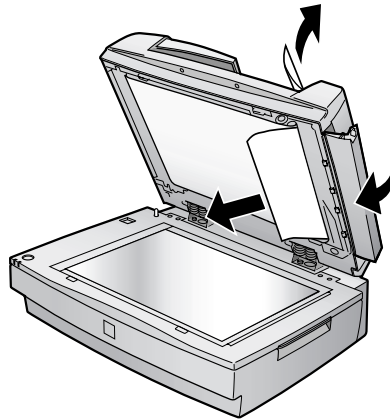
1. First open the ADF cover to determine where the paper jam occurred.



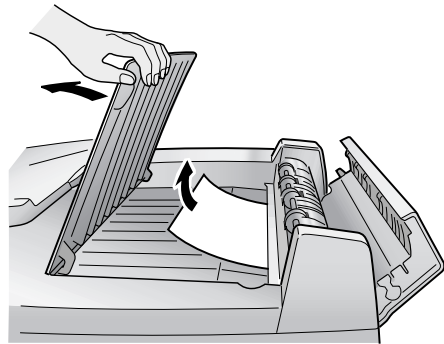
2. If paper is jammed in the feeder, open the cover on the left and slowly pull out the jammed paper as shown. (Be careful not to pull too hard or the paper may tear, making it more difficult to remove.)



3. If paper jams in the paper eject position, open the cover on the right and slowly pull out the jammed paper as shown. (Be careful not to pull too hard or the paper may tear, making it more difficult to remove.)



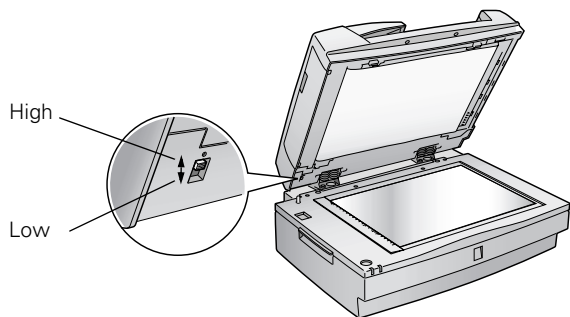
4. If the paper tears, open the middle cover and remove the paper.



## ***Changing the Document Feed Speed***

When you scan using the automatic document feeder, you can select a document feed speed of **Low** and **High**. Under normal conditions, use the high speed mode. If you want to scan thick documents or reduce noise of an image, use the low speed mode.

To change the document feed speed, lift the ADF and locate the switch as shown. Slide the switch up for high speed, or down for low speed.



---

# Where To Get Help

## *EPSON Technical Support*

EPSON provides technical assistance 24 hours a day through the electronic support services and automated telephone services listed in the following table:

Service	Access
World Wide Web	From the Internet, you can reach EPSON Support at <b><a href="http://support.epson.com">http://support.epson.com</a></b> . At this site, you can download drivers and other files, look at product documentation, access troubleshooting information, and receive technical advice through e-mail.
Automated Telephone Services	A variety of automated help services are available 24 hours a day, seven days a week. To use these services, you must have a touch tone telephone and call <b>(800) 922-8911</b> .

To speak to a technical support representative, dial (562) 276-4382 (U.S.) or (905) 709-3839 (Canada), 6 AM to 6 PM, Pacific Time, Monday through Friday. Toll or long distance charges may apply.

Before you call, please have the following information ready:

- Product name (EPSON GT-30000)
- Product serial number (located on the back of scanner)
- Proof of purchase (such as a store receipt) and date of purchase
- Computer configuration
- Description of the problem

You can purchase supplies and accessories from the EPSON Store at (800) 873-7766, or visit [www.epsonstore.com](http://www.epsonstore.com) (U.S. sales only). In Canada, please call (800) 873-7766 for dealer referral.



If you need help using another manufacturer's software with an EPSON product, see the documentation for that software for technical support information.

## ***Software Technical Support***

<b>Software</b>	<b>Telephone</b>	<b>Fax</b>	<b>Online and E-mail</b>
EPSON TWAIN HS	(562) 276-4382 (800) 922-8911	(800) 922-8911 fax-on-demand system	<a href="http://support.epson.com">http://support.epson.com</a>
PixTools QuickScan ISIS Driver	(408) 325-3800	(408) 232-9292	<a href="http://www.pixtran.com">www.pixtran.com</a> <a href="mailto:support@pixtran.com">support@pixtran.com</a>
NewSoft Presto! PageManager	(510) 445-8616	(510) 445-8601	<a href="http://www.newsoftinc.com">www.newsoftinc.com</a>



## Appendix A

# Installing the TCP/IP Protocol

To use your EPSON GT-30000 as a network scanner, your client computers and scanner server must have a network interface card, a network interface card driver, and the TCP/IP protocol installed. In addition, both the client computers and the scanner server must have an IP address assigned.

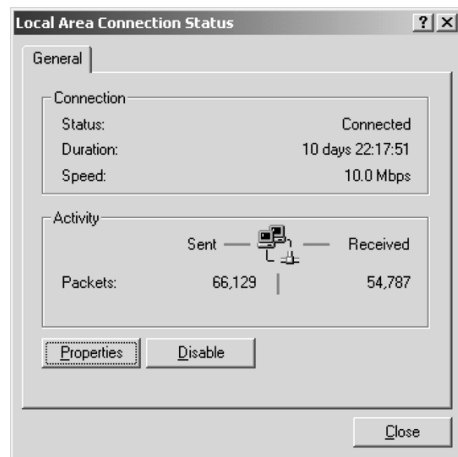


If you're running DHCP and WINS, or if you have a DNS server, you may find it easier to use a host name rather than an IP address to identify the scanner server. To specify a host name, you must enable DNS. See your Windows documentation for instructions.

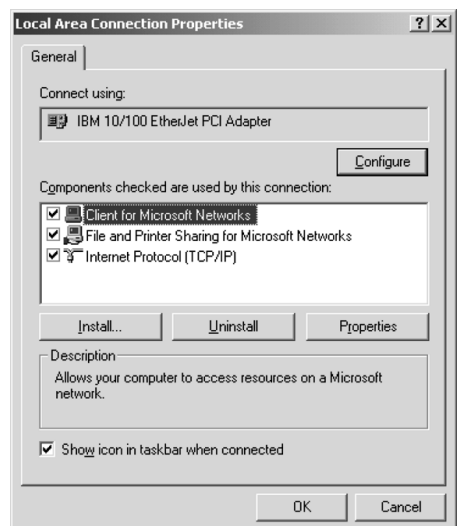
# Installing the TCP/IP Protocol on Windows Me and Windows 2000

When running Windows Me or Windows 2000, your TCP/IP protocol should automatically be set correctly for the station it is installed on if you are not running a DHCP server. To check the protocol, follow these steps.

1. Open the Control Panel and double-click the **Network & Dial Up Connections** icon. Then, double-click the **Local Area Connection** icon to display the screen to the right.
2. Click the **Properties** button to display the Local Area Properties screen.



3. Double-click **Internet Protocol (TCP/IP)** to display the Internet Protocol Properties screen.

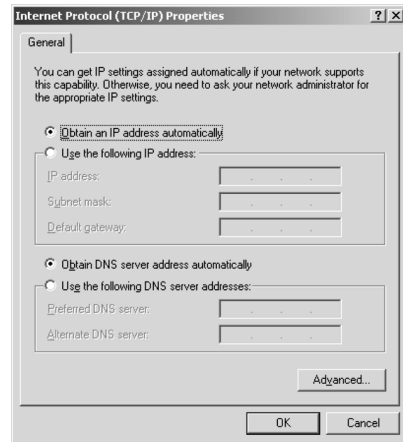




4. Make sure that Obtain an IP address automatically is selected and click OK.

(If you need to manually assign an IP address, contact your Network Administrator.)

5. Click OK to close the Local Area Connection Properties screen.
6. Click Close to close the Local Area Connection screen.



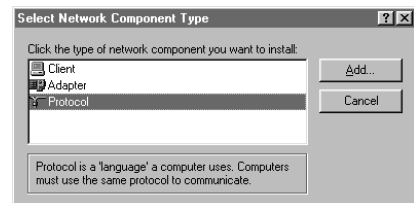
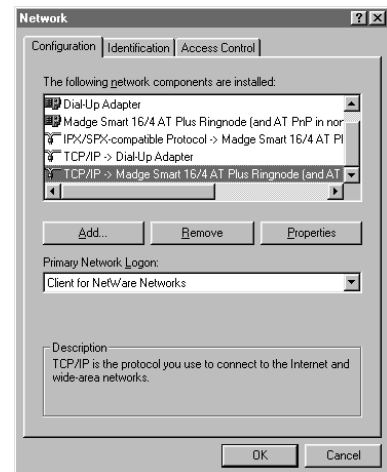
## Installing the TCP/IP Protocol on Windows 98 and Windows 95

1. Open the Control Panel and double-click the Network icon. If necessary, click the Configuration tab to display the window on the right.
2. Check that TCP/IP appears in the list of installed network components.

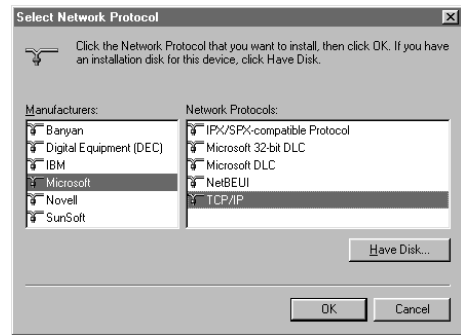
If it appears in the list, go to “Assigning an IP Address for Windows 95 and Windows 98 (First Release)” on page 124.

If you don’t see TCP/IP in the list, continue with the next step.

3. Click the Add button.
4. When you see the screen on the right, select Protocol from the list and click the Add button. The Select Network Protocol window appears.



5. Select **Microsoft** from the Manufacturers list, and **TCP/IP** from the Network Protocols list. Then click **OK**.
6. Continue with the instructions in the next section to assign an IP address.



## ***Assigning an IP Address for Windows 95 and Windows 98 (First Release)***

If your network is connected to the Internet, ask your Internet provider or system administrator for a formal IP address.

If your network is not connected to the Internet, you can use an IP address in the following ranges: 10.0.0.0 to 10.255.255.255, 172.16.0.0 to 172.31.255.255, or 192.168.0.0 to 192.168.255.255. Make sure you use a different IP address for every computer on your network.



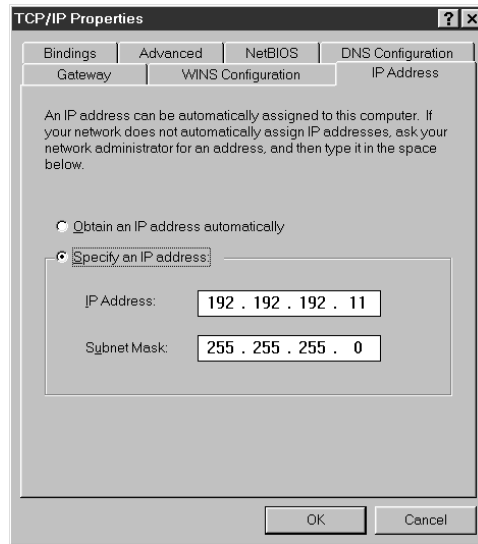
If you use IP addresses in the ranges listed above, you may need to change them before you connect the network to the Internet. Check with your network administrator.

Windows 98 (Second Edition) automatically assigns an IP address to itself (for the station it is installed on) if you are not connected to a DHCP server.

If your network uses a DHCP server, you don't need to obtain an IP address before beginning this procedure—the server finds one for you.

When you have your IP address, follow the steps below to assign it to your computer.

1. Select **TCP/IP** on the list of installed network components, and then click the **Properties** button. If necessary, click the **IP Address** tab.
2. Click **Specify an IP address**, and then enter the IP address and subnet mask.



If you're using a DHCP server on your network, you can assign an IP address automatically by selecting **Obtain an IP address automatically** and clicking **OK**.

3. Click **OK** to close the **TCP/IP Properties** window, then click **OK** again to close the **Network** window and have your IP address assignment take effect.

Make sure you share the IP address for the scanner server with all client computers on the network.

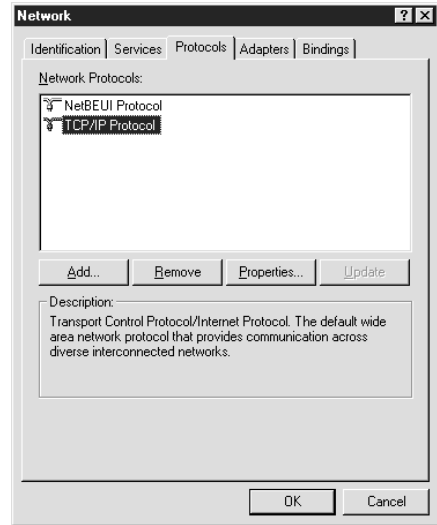
# Installing the TCP/IP Protocol on Windows NT 4.0

1. Open the Control Panel and double-click the **Network** icon. If necessary, click the **Protocols** tab.

2. Check that **TCP/IP Protocol** appears in the list of network protocols.

If it appears in the list, go to “Assigning an IP Address on Windows NT 4.0” on page 127.

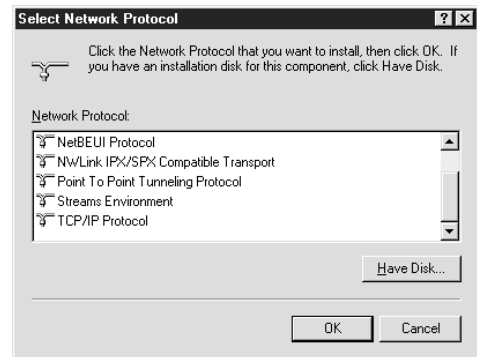
If you don’t see **TCP/IP Protocol** in the list, continue with the next step.



3. Click the **Add** button. You see the screen on the right.

4. Select **TCP/IP Protocol** and click **OK**.

5. Continue with the instructions in the next section to assign an IP address.



## Assigning an IP Address on Windows NT 4.0

If your network is connected to the Internet, ask your Internet provider or system administrator for a formal IP address.

If your network is not connected to the Internet, you can use an IP address in the following ranges: 10.0.0.0 to 10.255.255.255, 172.16.0.0 to 172.31.255.255, or 192.168.0.0 to 192.168.255.255. Make sure you use a different IP address for every computer on your network. If you are running a mixed Windows 95, Windows 98, Windows Me, Windows 2000 and Windows NT environment, you can use an IP address in the range of 169.254.XXX.XXX.

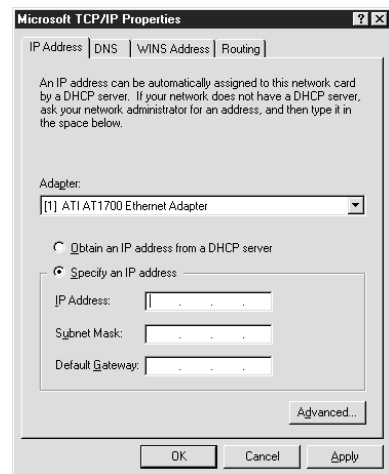


If you use IP addresses in the ranges listed above, you need to change them before you connect the network to the Internet. Otherwise you'll experience IP address conflicts.

If your network uses a DHCP server, you don't need to obtain an IP address before beginning this procedure; the server finds one for you.

Follow the steps below to assign the IP address to your computer:

1. Select **TCP/IP Protocol** in the Network Protocols list on the Protocols tab, and then click the **Properties** button.
2. Click the **IP Address** tab to display the screen on the right.
3. Click **Specify an IP address**, and then enter your IP address and subnet mask. Click **OK**. (If you're using a DHCP server on your network, you can assign an IP address automatically by selecting **Obtain an IP address from a DHCP server** and clicking **OK**.)
4. Click **OK** again to close the Network window and have your IP address assignment take effect.



Make sure you share the IP address for the scanner server with all client computers on the network.



# Appendix B

## Specifications

### General

#### Scanner type

Flatbed, color

#### Photoelectric device

Color CCD line sensor

#### Effective pixels

7020 × 10200 pixels at 600 dpi,  
100% scaling

#### Color depth

36-bit internal/24-bit external

#### Grayscale depth

12-bit internal/8-bit external

#### Maximum document size

11.7 × 17.0 inches (297 × 432 mm)  
A3, Ledger, B4, Legal, A4, Letter, B5 or  
Executive, A5, or A6 (the reading area can  
be specified from your software)

#### Output resolution

50 to 4800 in 1 dpi increments

#### Maximum hardware resolution\*

600 dpi (main scan)  
1200 dpi with Micro Step Drive™  
(sub scan)

\* The maximum hardware resolution of  
600 × 1200 dpi is achieved using EPSON's  
Micro Step Drive technology

#### Speed (600 dpi, draft mode)

Color: 0.79 msec/line (approx.)

Grayscale: 0.39 msec/line (approx.)

Line Art: 0.39 msec/line (approx.)

#### Color separation

RGB color filters on CCD

#### Reading sequence

Monochrome: One-pass scanning

Color byte sequence: One-pass scanning  
(R, G, B)

Color line sequence: One-pass scanning  
(R, G, B)

#### Zoom

50 to 200% in 1% increments

#### Command level

ESC/I-B7, FS

#### Pixel depth

12 bits per pixel (12 bits per pixel  
input, 1 to 8 bits per pixel output)

#### Brightness

7 levels

#### Line art settings

Fixed threshold

**Digital halftoning**

4 dither patterns (A, B, C, and D) for bi-level and quad-level data  
(2 downloadable dither patterns)

**Gamma correction**

2 types for CRT display  
3 types for printer  
1 type user-defined

**Color correction**

1 type for CRT display  
3 types for printer (available in color byte sequence mode and color line sequence mode)  
1 type user-defined

**Interfaces**

SCSI (micro DB 50-pin and 68-pin connectors)  
Optional IEEE 1394 I/F slot

**Light source**

Xenon gas cold cathode fluorescent lamp

**Reliability**

600,000 cycles of carriage movement (main unit MCBF)

**Dimensions**

Width: 25.9 inches (658 mm)  
Depth: 19.2 inches (488 mm)  
Height: 10 inches (254 mm)

**Weight**

Approximately 66 lb (37.5 kg)

**Electrical****Input voltage range**

100 to 120 VAC: 90 to 132 VAC  
220 to 240 VAC: 198 to 264 VAC

**Rated frequency**

50 to 60 Hz

**Rated current**

100 to 120 VAC: 0.8 A  
220 to 240 VAC: 0.4 A

**Power consumption**

Operating: Approximately 60 W  
Approximately 65 W with ADF unit  
Standby: Approximately 12 W

**Environmental****Temperature**

Operating: 41 to 95 °F (5 to 35 °C)  
50 to 89 °F (10 to 32 °C) when using ADF  
Storage: -13 to 140 °F  
(-25 to 60 °C)

**Humidity (without condensation)**

Operating: 10 to 80%  
Standby: 10 to 85%

**Operating conditions**

Ordinary office or home conditions.  
Avoid dust, direct sunlight, and proximity to strong light sources.

**Safety Approvals****120 V model**

Safety: UL 1950  
CSA C22.2 No. 950  
EMC FCC part 15 subpart B class B  
CSA C108.8 class B

**230 V model**

Safety: EN 60950  
EMC: EN 550022  
(CISPR Pub 22) class B  
AS/NZS 3548 class B



## SCSI Interface

### Interface type

SCSI 2 and SCSI 3

### Logic level

TTL-compatible

### ID setting

Selectable from 0 to 7

### Terminator

Internal terminator (enable/disable selectable)

### Connector select switch

W: 68-pin connector

N: 50-pin connector

### Connector type

Micro DB 50-pin connector

Micro DB 68-wide pin connector

### Initialization methods

Hardware: Initialized when the scanner is turned on or the scanner receives a SCSI Reset signal from the SCSI interface

Software: Initialized when the software sends the Esc @ (initialize the scanner command), or the scanner receives a SCSI Bus Device message

## IEEE 1394 Scanner Interface

### Interface type

IEEE 1394 compatible

### Data transfer method

Half-duplex Data/Strobe differential serial

### Synchronization method

Clock synchronization with DS-Link

### Encoding/decoding

DS-Link

### Logic level

3.3 V

### Compatible connectors

IEEE 1394-1995 compatible

### Power class

Power class code 100

No power supply from external sources

Fitted with a repeat function with bus power

## Environmental

### Temperature

Operating: 41 to 95 °F  
(5 to 35 °C)

Standby: -13 to 140 °F  
(-25 to 60 °C)

### Humidity (without condensation)

Operating: 10 to 80%

Standby: 10 to 85%

## Option Interface Connector

### Interface type

For use with the automatic document feeder (B813212)

### Output voltage

21.6 to 26.4 VDC

4.75 to 5.25 VDC

### Output current

0.6 A (24 V)

0.3 A (5 V)

# Automatic Document Feeder (B813212)

## General

### Paper input/output

Load face up; eject face down

### Paper quantity

100 pages (80 g/m<sup>2</sup> paper, maximum total thickness under 0.48 inches [12 mm])

### Reliability

600,000 sheets (load/eject MCBF)

### Dimensions

Width: 23.8 inches (606 mm)

Depth: 19.2 inches (488 mm)

Height: 5.3 inches (134 mm)

### Weight

Approximately 28.6 lb (13 kg)

## Electrical

### Input voltage

22.8 to 25.2 VDC

4.75 to 5.25 VDC

### Input current

24 V: 1.3 A

5 V: 0.3 A

## Environmental

### Temperature

Operating: 50 to 89 °F (10 to 32 °C)

Standby: -4 to 140 °F (-20 to 60 °C)

### Humidity (without condensation)

Operating: 20 to 80%

Standby: 95% or less

# Appendix C

## Notices

---

### System Requirements

The minimum system requirements are listed below. For optimum performance, a faster processor and more memory are recommended. If you're scanning high resolution images, you need more than the minimum available hard disk space.



Color and tone reproduction are subject to the display capability of your computer system, including the video card, monitor, and software. See the documentation for these products for details.

- An IBM-compatible PC with a Pentium processor
- Microsoft Windows 95, Windows 98, Windows Me, Windows 2000, or Windows NT 4.0 (Service Pack 3 or higher)
- SCSI port
- IEEE 1394: preinstalled Windows 2000 or Windows Me and an OHCI compatible port or card
- 32MB RAM (64MB RAM recommended for all systems)
- 50MB available hard disk space
- CD-ROM drive
- VGA color monitor with 640 × 480 resolution (a color monitor with a resolution of 800 × 600 or higher recommended)
- 8-bit, 256-color display adapter card (24-bit display adapter card with millions of colors recommended)
- Existing network with TCP/IP support for GT-30000 network scanning

---

# Important Safety Instructions

Read all of these instructions and save them for later reference. Follow all warnings and instructions marked on the scanner.

- Unplug the scanner before cleaning. Clean with a damp cloth only. Do not spill liquid on the scanner.
- Do not place the scanner on an unstable surface or near a radiator or heat source.
- Do not block or cover the openings in the scanner's cabinet. Do not insert objects through the slots.
- Use only the type of power source indicated on the scanner's label.
- Connect all equipment to properly grounded power outlets. Avoid using outlets on the same circuit as photocopiers or air control systems that regularly switch on and off.
- Do not let the power cord become damaged or frayed.
- If you use an extension cord with the scanner, make sure the total ampere rating of the devices plugged into the extension cord does not exceed the cord's ampere rating. Also, make sure the total ampere rating of all devices plugged into the wall outlet does not exceed the wall outlet's ampere rating.
- Do not attempt to service the scanner yourself.
- Unplug the scanner and refer servicing to qualified service personnel under the following conditions: if the power cord or plug is damaged; if liquid has entered the scanner; if the scanner has been dropped or the cabinet damaged; if the scanner does not operate normally or exhibits a distinct change in performance. Do not adjust controls that are not covered by the operating instructions.

---

# Declaration of Conformity

According to 47CFR, Part 2 and 15 for Class B Personal Computers and Peripherals; and/or CPU Boards and Power Supplies used with Class B Personal Computers:

We: EPSON AMERICA, INC.  
Located at: MS 3-13  
3840 Kilroy Airport Way  
Long Beach, CA 90806-2469  
Telephone: (562) 290-5254

Declare under sole responsibility that the product identified herein, complies with 47CFR Part 2 and 15 of the FCC rules as a Class B digital device. Each product marketed, is identical to the representative unit tested and found to be compliant with the standards. Records maintained continue to reflect the equipment being produced can be expected to be within the variation accepted, due to quantity production and testing on a statistical basis as required by 47CFR §2.909. Operation is subject to the following two conditions: (1) this device may not cause harmful interference, and (2) this device must accept any interference received, including interference that may cause undesired operation.

Trade Name: EPSON  
Type of Product: Image Scanner  
Model: G830A  
Product: EPSON GT-30000

---

# FCC Compliance Statement

## ***For United States Users***

This equipment has been tested and found to comply with the limits for a Class B digital device, pursuant to Part 15 of the FCC Rules. These limits are designed to provide reasonable protection against harmful interference in a residential installation. This equipment generates, uses, and can radiate radio frequency energy and, if not installed and used in accordance with the instructions, may cause harmful interference to radio or television reception. However, there is no guarantee that interference will not occur in a particular installation. If this equipment does cause interference to radio and television reception, which can be determined by turning the equipment off and on, the user is encouraged to try to correct the interference by one or more of the following measures.

- Reorient or relocate the receiving antenna.
- Increase the separation between the equipment and receiver.
- Connect the equipment into an outlet on a circuit different from that to which the receiver is connected.
- Consult the dealer or an experienced radio/TV technician for help.

## ***Warning***

The connection of a non-shielded equipment interface cable to this equipment will invalidate the FCC Certification of this device and may cause interference levels which exceed the limits established by the FCC for this equipment. It is the responsibility of the user to obtain and use a shielded equipment interface cable with this device. If this equipment has more than one interface connector, do not leave cables connected to unused interfaces. Changes or modifications not expressly approved by the manufacturer could void the user's authority to operate the equipment.

## ***For Canadian Users***

This Class B digital apparatus meets all requirements of the Canadian Interference-Causing Equipment Regulations.

*Cet appareil numérique de la classe B respecte toutes les exigences du Règlement sur le matériel brouilleur du Canada.*

---

# ENERGY STAR Compliance

As an ENERGY STAR Partner, EPSON has determined that this product meets the ENERGY STAR guidelines for energy efficiency.



The EPA ENERGY STAR Office Equipment Program is a voluntary partnership with the computer and office equipment industry to promote the introduction of energy-efficient personal computers, monitors, printers, fax machines, copiers, and scanners, in an effort to reduce air pollution caused by power generation.

---

## Warranty

### ***Epson America, Inc. Limited Warranty***

*What Is Covered:* Epson America, Inc. (“EPSON”) warrants to the first end user customer of the EPSON product enclosed with this limited warranty statement, that the product if purchased and used in the United States or Canada, conforms to the manufacturer’s specifications and will be free from defects in workmanship and materials for a period of one year from the date of original purchase. EPSON warrants that the EPSON product is manufactured from new components and parts, or if you have purchased a refurbished product, like-new components and parts which perform like new and meet the EPSON standard of quality. For warranty service, you must provide proof of the date of original purchase.

*What EPSON Will Do To Correct Problems:* Should your EPSON product prove defective during the warranty period, please bring the product securely packaged in its original container or an equivalent to your EPSON Dealer or EPSON Customer Care Center. You are responsible for all costs (shipping, insurance, travel time) in getting the product to the service location. EPSON will, at its option, repair or replace on an exchange basis the defective unit, without charge for parts or labor. When warranty service involves the exchange of the product or of a part, the item replaced becomes EPSON property. The replacement unit may be new or refurbished to the Epson standard of quality, and at Epson’s option, the replacement may be another model of like kind and quality. Epson’s liability for replacement of the covered product will not exceed the original retail selling price of the covered product. Exchange or replacement products or parts assume the remaining warranty period of the product covered by this limited warranty.

*What This Warranty Does Not Cover:* This warranty covers only normal use in the United States and Canada. This warranty does not cover damage to the EPSON product caused by parts or supplies not manufactured, distributed or certified by EPSON. This warranty does not cover third party parts, components or peripheral devices added to the EPSON product after its shipment from EPSON, e.g., dealer-added boards, chips or drives. This warranty is not transferable and will not apply to products

purchased from an end user. EPSON is not responsible for warranty service should the EPSON label or logo or the rating label or serial number be removed or should the product fail to be properly maintained or fail to function properly as a result of misuse, abuse, improper installation, neglect, improper shipping, damage caused by disasters such as fire, flood, and lightning, improper electrical current, software problems, interaction with non-EPSON products, or service other than by an EPSON Authorized Servicer. If a claimed defect cannot be identified or reproduced in service, you will be held responsible for costs incurred.

THE WARRANTY AND REMEDY PROVIDED ABOVE ARE EXCLUSIVE AND IN LIEU OF ALL OTHER EXPRESS OR IMPLIED WARRANTIES INCLUDING, BUT NOT LIMITED TO, THE IMPLIED WARRANTIES OF MERCHANTABILITY OR FITNESS FOR A PARTICULAR PURPOSE. SOME LAWS DO NOT ALLOW THE EXCLUSION OF IMPLIED WARRANTIES. IF THESE LAWS APPLY, THEN ALL EXPRESS AND IMPLIED WARRANTIES ARE LIMITED TO THE WARRANTY PERIOD IDENTIFIED ABOVE. UNLESS STATED HEREIN, ANY STATEMENTS OR REPRESENTATIONS MADE BY ANY OTHER PERSON OR FIRM ARE VOID. IN THE EVENT THE REMEDIES ABOVE FAIL, EPSON'S ENTIRE LIABILITY SHALL BE LIMITED TO A REFUND OF THE PRICE PAID FOR THE EPSON PRODUCT COVERED BY THIS LIMITED WARRANTY. EXCEPT AS PROVIDED IN THIS WRITTEN WARRANTY, NEITHER EPSON AMERICA, INC. NOR ITS AFFILIATES SHALL BE LIABLE FOR ANY LOSS, INCONVENIENCE, OR DAMAGE, INCLUDING DIRECT, SPECIAL, INCIDENTAL, OR CONSEQUENTIAL DAMAGES, RESULTING FROM THE USE OR INABILITY TO USE THE EPSON PRODUCT, WHETHER RESULTING FROM BREACH OF WARRANTY OR ANY OTHER LEGAL THEORY.

In Canada, warranties include both warranties and conditions.

Some jurisdictions do not allow limitations on how long an implied warranty lasts and some jurisdictions do not allow certain exclusions or limitations on damages, so the above limitations and exclusions may not apply to you. This warranty gives you specific legal rights, and you may also have other rights which vary from jurisdiction to jurisdiction.

To locate the EPSON Authorized Reseller or EPSON Customer Care Center nearest you call: (800) 922-8911 or write to: Epson America, Inc., P.O. Box 93008, Long Beach, CA 90809-9985.



# Index

## A

- Accessories, 118
- Adobe Acrobat Reader
  - using, 6 to 7
- Adobe Acrobat Reader, using
  - locating the PDF manuals, 7
- Auto Exposure button, 59
- Auto Locate button, 59
- Automatic document feeder
  - document feed speed, 117
  - installing, 14 to 15
  - paper jams, fixing, 116 to 117
  - problems, 109
  - specifications, 132
  - using, 56 to 57

## B

- Batch scanning, 55
- Blurred image, 111

## C

- Cable length, 17
- Cleaning the scanner, 101
- Client computers
  - requirements, 64
  - setting up, 91 to 94
- Colors, problems, 112
- Connecting the scanner
  - IEEE 1394, 21 to 22
  - SCSI, 17 to 20

## D

- Dial, SCSI ID, 17
- Document feed speed, 117
- Document position, 57, 111
- Documentation
  - PDF manuals, 6 to 7
  - Reference Guide, 4 to 6

## E

- Electrical requirements, 130
- Electronic Reference Guide, 4 to 6
- EPSON
  - help, 118 to 119
  - Store, 118
- EPSON Scan Server
  - changing start up mode, 90
  - installing, 66 to 69, 71 to 74, 76 to 79, 82 to 86, 87 to 89
  - requirements, 64
  - scanning with, 98
  - setting up, 65
  - start up mode, 90
  - starting, 96
  - uninstalling, 115
- EPSON TWAIN HS
  - installing, 24 to 29, 30 to 35, 36 to 40, 41 to 45, 46 to 48
  - problems, 105, 108
  - scanning with, 58
  - starting, 61
  - uninstalling, 114

EPSON TWAIN HS Network  
installing, 91 to 94  
problems, 105, 109  
scanning with, 98  
starting, 97  
uninstalling, 115  
ERROR light, 102, 103 to 104  
Exposure setting, 59

## F

File size, 110  
Fluorescent lamp, replacing, 102

## H

Help  
EPSON, 118 to 119  
software, 119  
Highlight setting, 59  
Home position, 102

## I

IEEE 1394  
connecting the scanner, 21 to 22  
specifications, 131  
Image quality problems, 110 to 113  
Installing  
automatic document feeder, 14 to 15  
TCP/IP on a network, 121 to 127  
Windows 2000 software, 30 to 35, 71 to 74  
Windows 95 software, 41 to 45, 82 to 86  
Windows 98 software, 36 to 40, 76 to 79  
Windows Me software, 24 to 29  
Windows NT 4.0 software, 46 to 48, 90  
IP address, assigning, 124 to 125, 127  
ISIS driver  
accessing, 51  
documentation, 7  
installing, 49

## L

Lamp, replacing, 102  
Lights, scanner, 103 to 104  
Loading paper, 56 to 57

## M

Maintenance, 101, 102  
Manuals  
PDF manuals, 6 to 7  
Reference Guide, 4 to 6  
Marquee, setting scan area, 59

## N

Network  
assigning IP address, 124 to 125, 127  
changing scanner server start up mode, 90  
installing scanner server software, 90  
installing TCP/IP, 121 to 127  
requirements, 64  
scanner address, 93  
starting a scan, 98  
starting EPSON Scan Server, 96  
stopping a scan, 99  
using the Start button, 98

## P

Paper jams, fixing, 116 to 117  
Photographs  
resolution, 54  
scaling, 55  
PixTools QuickScan, 50  
Power-on sequence, 16  
Presto! PageManager  
documentation, 7  
installing, 52  
Problems, solving, 103 to 113

## R

- READY light, 59, 102, 103
- Registering your software, 8
- Requirements
  - electrical, 130
  - environmental, 130
  - system, 133
- Resizing images, 55
- Resolution
  - choosing, 54
  - maximum, 129

## S

- Safety instructions, 134
- Scaling images, 55
- Scanner
  - address, 93
  - connecting, 17 to 22
  - parts, 12
  - selecting source, 53 to 54
  - setting up, 9
  - software, uninstalling, 114 to 115
  - transporting, 102
  - unlocking, 13
  - unpacking, 10 to 11
- Scanner parts, 12
- Scanning
  - batch, 55
  - defining scan area, 59
  - network, 95 to 99
  - placing document, 57
  - resolution, 54
  - scaling, 55
- Scanning tips, 55
- Screen calibration, 25, 32, 37, 45, 48, 77, 86, 89, 93

## SCSI

- connecting to the scanner, 17 to 20
- ID number, 17
- interface specifications, 131
- select switch, 19
- terminator switch, SCSI, 18
- Service, 118 to 119
- Setup problems, 105 to 106
- Shadow setting, 59
- Software
  - problems, 108 to 109
  - settings, 59
  - uninstalling, 114 to 115
- Specifications
  - automatic document feeder, 132
  - IEEE 1394, 131
  - scanner, 129 to 131
  - SCSI, 131
- Start button
  - assigning applications to, 60 to 61
  - using on a network scanner, 98
- Start up mode, changing scanner server, 90
- Stopping a scan, 99
- Support, 118 to 119
- System requirements, 133

## T

- TCP/IP protocol
  - assigning IP address, 124 to 125, 127
  - installing on Windows 98 and Windows 95, 123 to 124
  - installing on Windows Me and Windows 2000, 122 to 123
  - installing on Windows NT 4.0, 126
- Technical support, 118 to 119
- Terminator switch, SCSI, 19
- Transportation lock, 13, 102
- Transporting scanner, 102

## Troubleshooting

- automatic document feeder, 109, 116
- image quality, 110 to 113
- scanner, 106 to 107
- setup, 105 to 106
- software, 108 to 109
- testing the scanner, 16, 28, 34, 39

## Windows NT 4.0

- assigning IP address, 127
- scanner software, installing, 46 to 48, 87 to 89
- TCP/IP protocol, installing, 126 to 127
- World Wide Web, 119

## U

- Uninstalling software, 114 to 115
- Unlocking scanner, 13
- Unpacking scanner, 10 to 11

## W

### Warranty, 137

### Windows 2000

- scanner software, installing, 30 to 35, 71 to 74
- selecting default scanner, 35
- TCP/IP protocol, installing, 122 to 123
- testing the scanner, 34

### Windows 95

- assigning IP address, 124 to 125
- scanner software, installing, 41 to 45, 82 to 86
- TCP/IP protocol, installing, 123 to 125

### Windows 98

- assigning IP address, 124 to 125
- scanner software, installing, 36 to 40, 76 to 79
- selecting default scanner, 40
- TCP/IP protocol, installing, 123 to 125
- testing the scanner, 39

### Windows Me

- scanner software, installing, 24 to 29, 66 to 69
- selecting default scanner, 29
- TCP/IP protocol, installing, 122 to 123
- testing the scanner, 28